



Chipsmall Limited consists of a professional team with an average of over 10 year of expertise in the distribution of electronic components. Based in Hongkong, we have already established firm and mutual-benefit business relationships with customers from,Europe,America and south Asia,supplying obsolete and hard-to-find components to meet their specific needs.

With the principle of “Quality Parts,Customers Priority,Honest Operation,and Considerate Service”,our business mainly focus on the distribution of electronic components. Line cards we deal with include Microchip,ALPS,ROHM,Xilinx,Pulse,ON,Everlight and Freescale. Main products comprise IC,Modules,Potentiometer,IC Socket,Relay,Connector.Our parts cover such applications as commercial,industrial, and automotives areas.

We are looking forward to setting up business relationship with you and hope to provide you with the best service and solution. Let us make a better world for our industry!



## Contact us

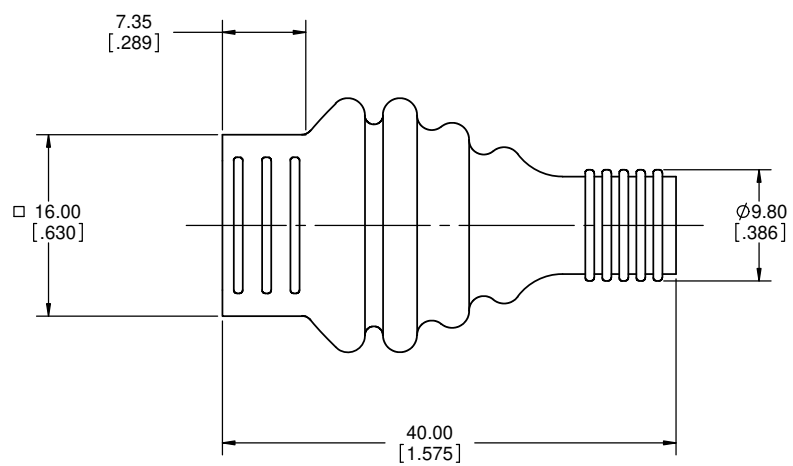
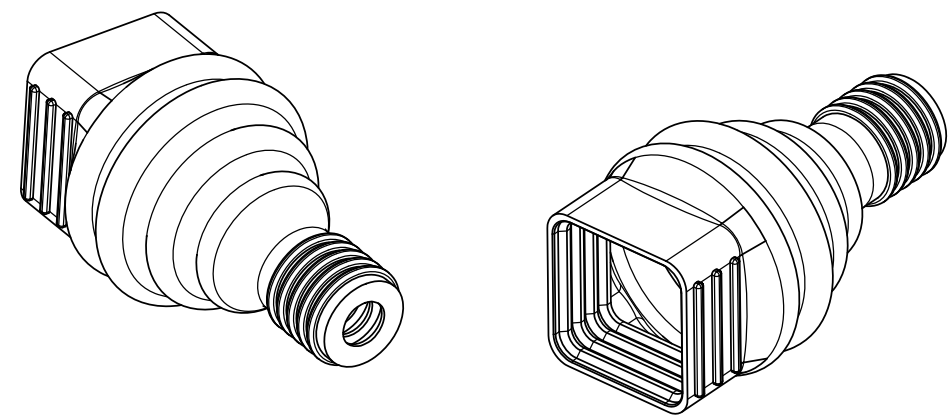
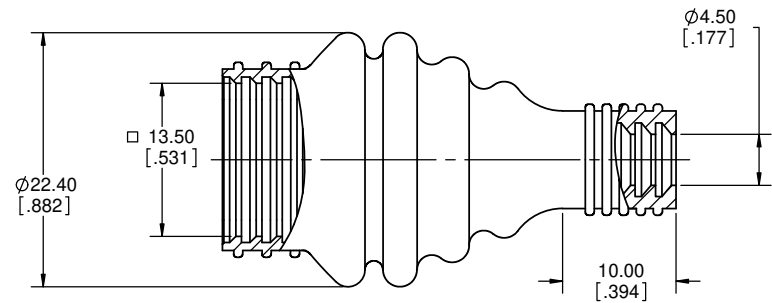
Tel: +86-755-8981 8866 Fax: +86-755-8427 6832

Email & Skype: [info@chipsmall.com](mailto:info@chipsmall.com) Web: [www.chipsmall.com](http://www.chipsmall.com)

Address: A1208, Overseas Decoration Building, #122 Zhenhua RD., Futian, Shenzhen, China




REVISIONS			
REV	DESCRIPTION, ECN, EAR NO.	DATE	APP'D
B	ECN E08315	NOV20/07	K.L.
C	PRODUCT DWG (EAR 14373)	JUNE02/15	K.L.



AMPHENOL PART NO.	COLOUR
MRJ-258E-11BP	TRANSPARENT
MRJ-258E-12BP	BLACK

- NOTES:**
1. MATERIAL: SILICONE RUBBER.
  2. OPERATING TEMPERATURE: -20°C TO +200°C.
  3. PART IS RoHS COMPLIANT PER EU DIRECTIVE 2011/65/EU AND AMENDMENTS.
  4. PART SUPPLIED BULK PACKED.
  5. BOOT TO BE ASSEMBLED OVER RJ CABLE PRIOR TO TERMINATION OF RJ PLUG. SLIDE BOOT TOWARDS CABLE END TO COVER PLUG AND MATING INTERFACE.
  6. SQUARE END OF BOOT FITS OVER MATING END OF AMPHENOL MRJ OR MRJR SERIES MODULAR JACKS.



UNLESS SPECIFIED OTHERWISE		DRAWN		A. DODDS		JUN28/07		<b>Amphenol Canada Corp.</b> www.amphenolcanada.com									
PRIMARY UNITS MILLIMETERS		CHECKED		K. LAMBIE		NOV18/07											
SECONDARY		INCHES		M.E. APP'D				MRJ SERIES BOOT, FOR RJ PLUG & CABLE, RoHS COMPLIANT									
REFERENCE IN PARENTHESES				Q.A. APP'D													
GENERAL TOLERANCES		DWG APPR.															
1 DECIMAL PLACE		ENG. REL. NO.		EAR E13132				DWG. NO.  P-MRJ-258E-1XBP									
2 DECIMAL PLACES		REF.															
3 DECIMAL PLACES		THIRD ANGLE PROJECTION				DO NOT SCALE DRAWING											
ANGULAR DEGREES								CODE ID NO. 03554		DWG SIZE: X		SCALE: 3:1		SHEET 1 OF 1		REV C	

THIS DOCUMENT CONTAINS PROPRIETARY INFORMATION AND SUCH INFORMATION MAY NOT BE DISCLOSED TO OTHERS FOR ANY PURPOSE OR USED FOR MANUFACTURING PURPOSES WITHOUT WRITTEN PERMISSION FROM AMPHENOL CANADA CORP.