



Chipsmall Limited consists of a professional team with an average of over 10 year of expertise in the distribution of electronic components. Based in Hongkong, we have already established firm and mutual-benefit business relationships with customers from,Europe,America and south Asia,supplying obsolete and hard-to-find components to meet their specific needs.

With the principle of "Quality Parts,Customers Priority,Honest Operation,and Considerate Service",our business mainly focus on the distribution of electronic components. Line cards we deal with include Microchip,ALPS,ROHM,Xilinx,Pulse,ON,Everlight and Freescale. Main products comprise IC,Modules,Potentiometer,IC Socket,Relay,Connector.Our parts cover such applications as commercial,industrial, and automotives areas.

We are looking forward to setting up business relationship with you and hope to provide you with the best service and solution. Let us make a better world for our industry!



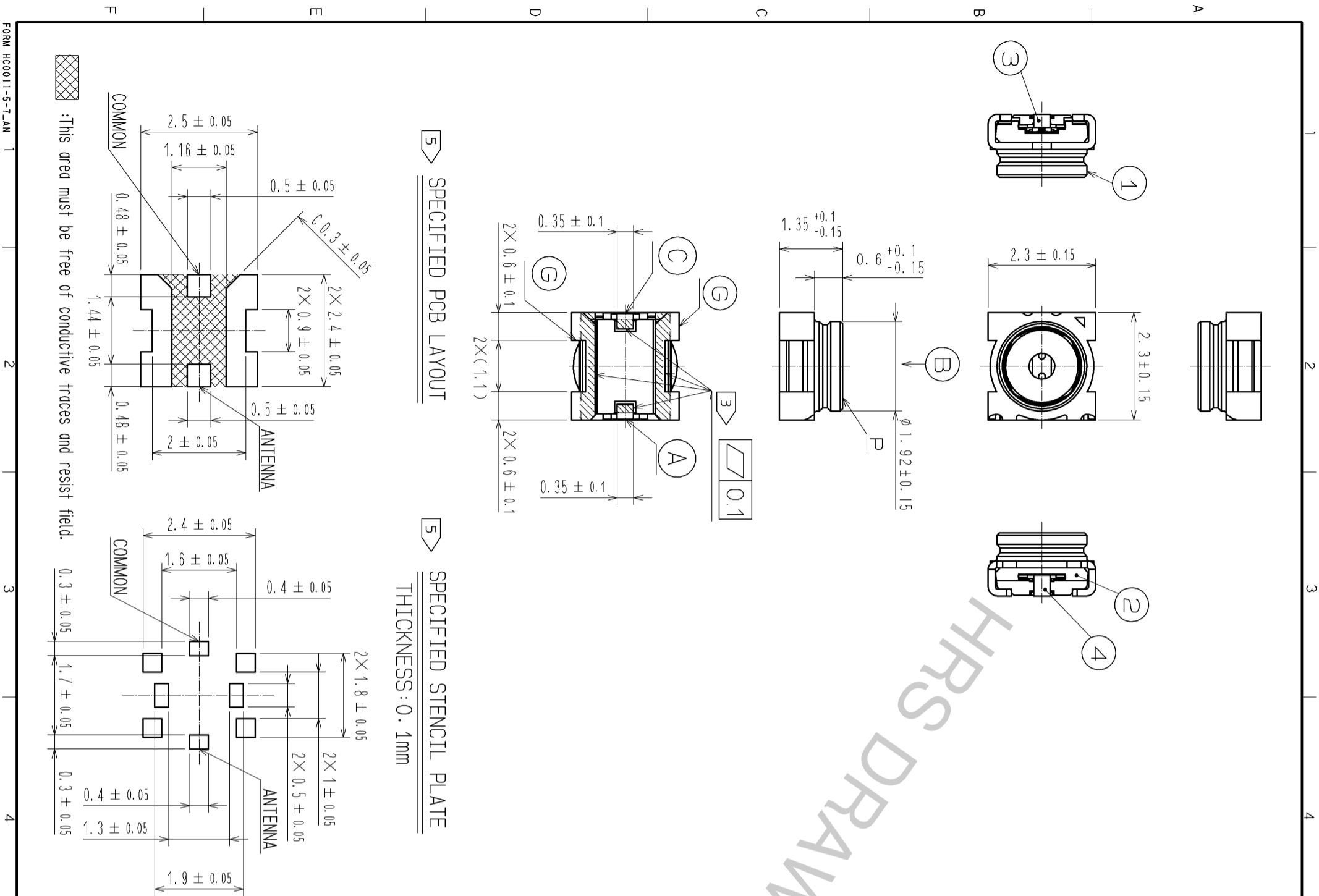
## Contact us

Tel: +86-755-8981 8866 Fax: +86-755-8427 6832

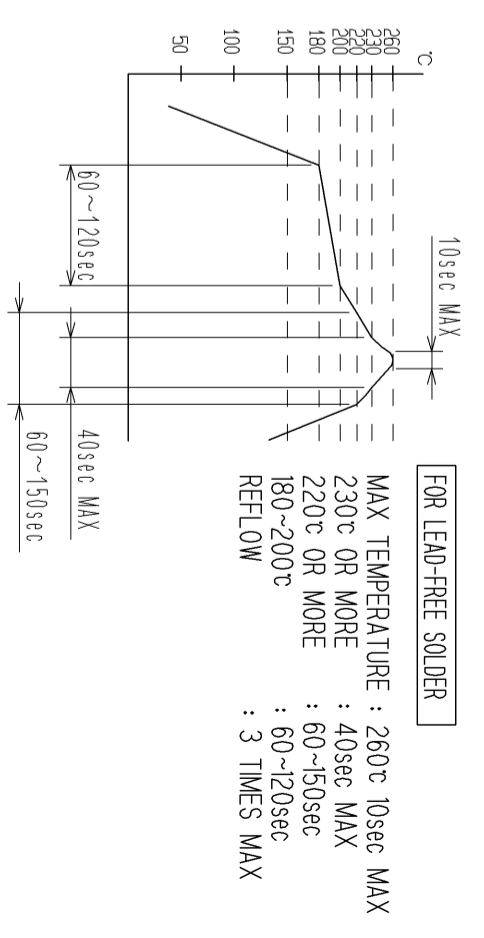
Email & Skype: info@chipsmall.com Web: www.chipsmall.com

Address: A1208, Overseas Decoration Building, #122 Zhenhua RD., Futian, Shenzhen, China

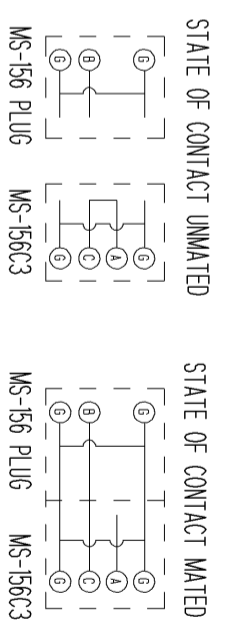




RECOMMENDED REFLOW TEMPERATURE PROFILE



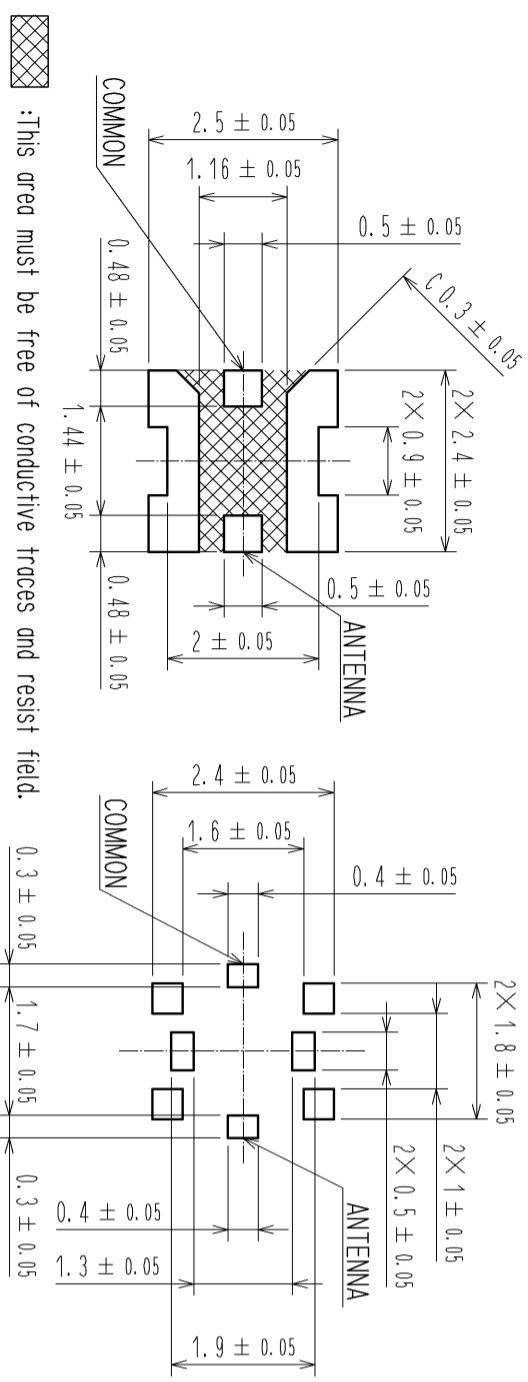
NOTE 1. Circuit shall be as follows.



2. For use of this product, be sure to put contact area of plug on position P perpendicularly.
3. Lead co-planarity is to be 0.1mm MAX.
4. Do not use the washing process.
5. Please do not change the specified layout of the PCB dimension and the layout of the stencil plate dimension and thickness otherwise could not be responsible for the solderability of the product.
6. This product is intended to be used for circuit inspection only. Consult us if any other application is considered.
7. Do not use hand soldering for mounting of MS-156C3.

ROHS COMPLIANT HALOGEN FREE COMPLIANT

5 SPECIFIED PCB LAYOUT  
5 SPECIFIED STENCIL PLATE THICKNESS: 0.1mm

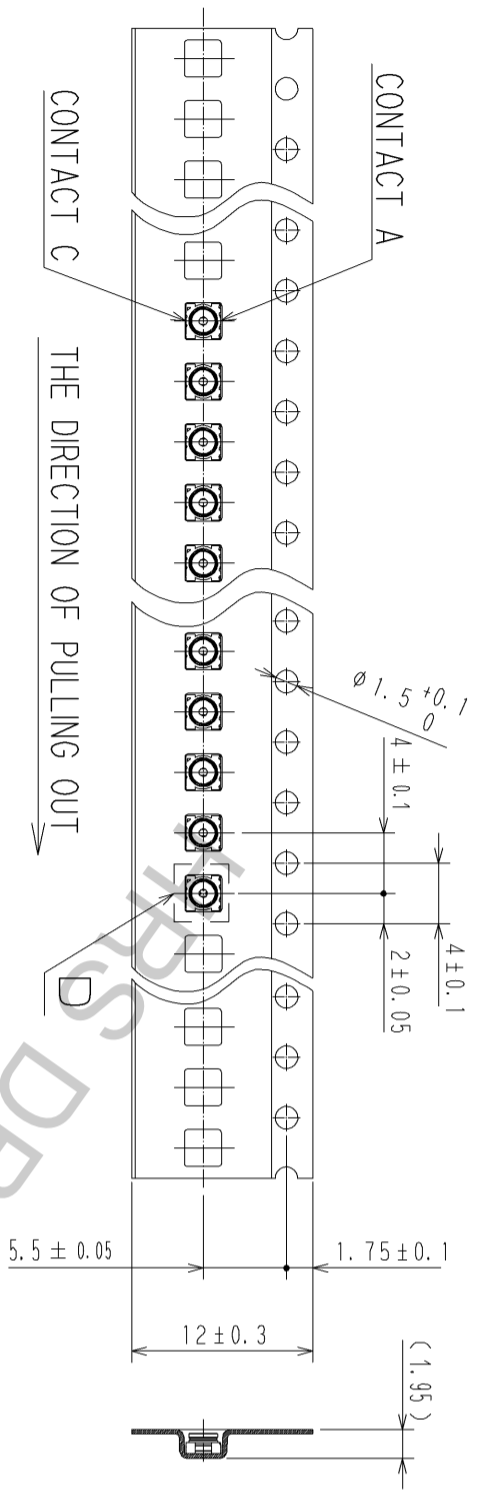


FORM HC0011-5-7-AN  
: This area must be free of conductive traces and resist field.

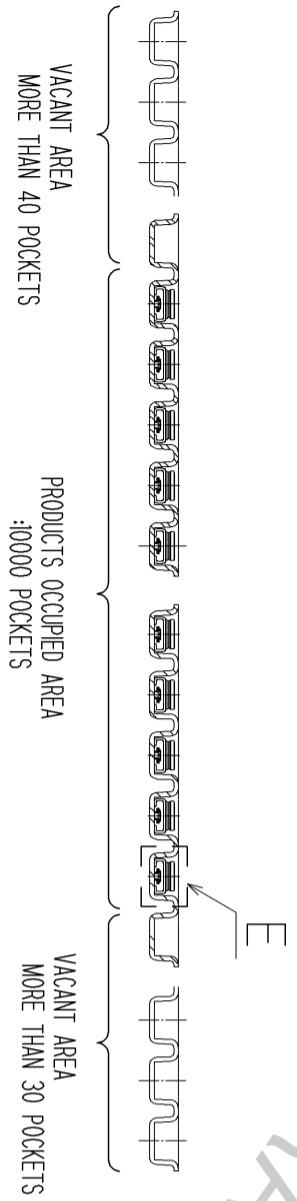
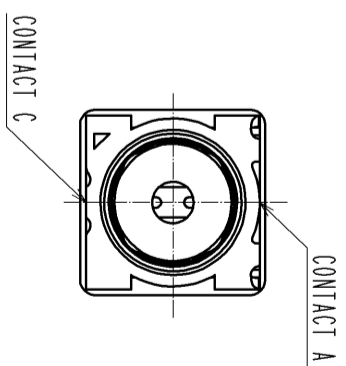
3	CU-NI-SI-ALLOY	SELECTIVE GOLD PLATING	6	PET
2	PA-M		5	PS
1	PHOSPHOR BRONZE	GOLD PLATING	4	PHOSPHOR BRONZE
MATERIAL		FINISH . REMARKS	MATERIAL	
UNITS		SCALE	COUNT	DESCRIPTION OF REVISIONS
mm		10: 1	1	DS. YAMAKOSHI
APPROVED . MH. YAMANE		DESIGNED		CHECKED
13.11.29		NK. NINOMIYA		14.09.02
CHECKED . NK. NINOMIYA		PART		EDC3-350543-00
13.11.28		NO.		MS-156C3
DESIGNED . TS. NAKAGAWA		CODE		CL358-0340-0-00
13.11.27		NO.		
DRAWN . TS. NAKAGAWA		NO.		
13.11.27		NO.		



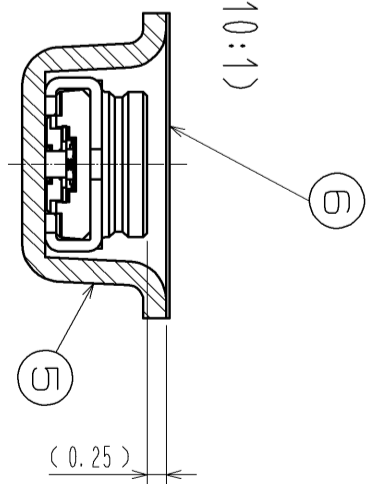
PACKAGING SPECIFICATION



D (10:1)

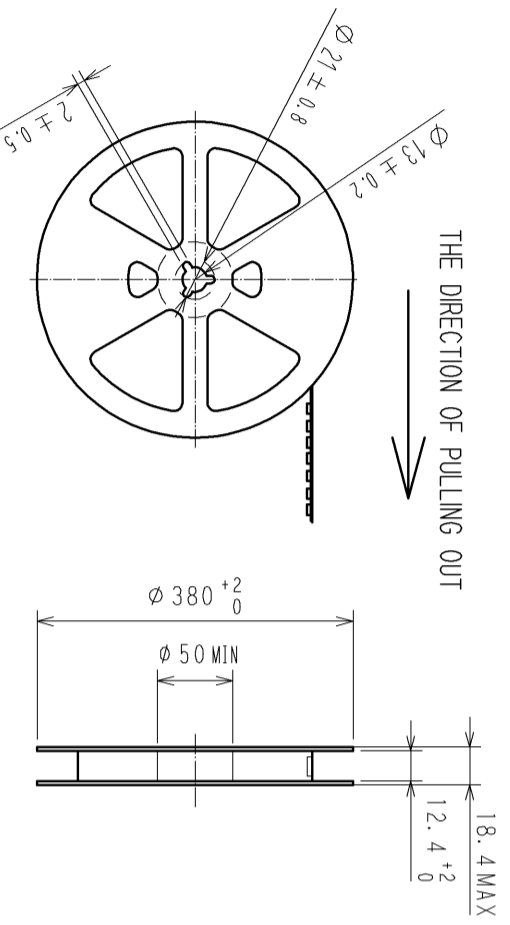


THE DIRECTION OF PULLING OUT

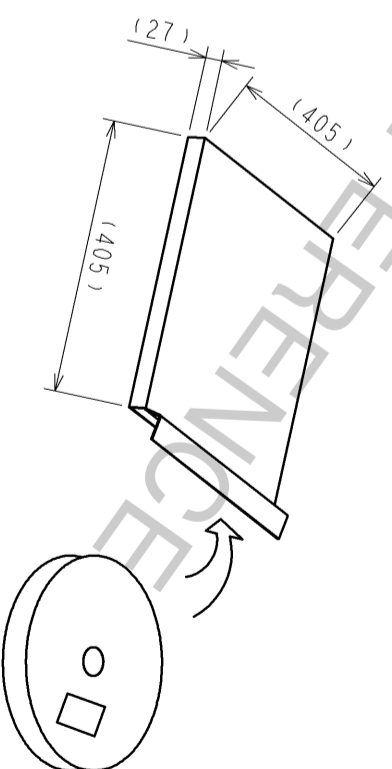


REEL DIMENSIONS(FREE)

10000 PIECES PER REEL



OUTER PACKAGING CASE(FREE)



<b>HRS</b>	DRAWING NO.	EDC3-350543-00
	PART NO.	MS-156C3
	CODE	CL358-0340-0-00
	NO.	2/2