



Chipsmall Limited consists of a professional team with an average of over 10 year of expertise in the distribution of electronic components. Based in Hongkong, we have already established firm and mutual-benefit business relationships with customers from,Europe,America and south Asia,supplying obsolete and hard-to-find components to meet their specific needs.

With the principle of “Quality Parts,Customers Priority,Honest Operation,and Considerate Service”,our business mainly focus on the distribution of electronic components. Line cards we deal with include Microchip,ALPS,ROHM,Xilinx,Pulse,ON,Everlight and Freescale. Main products comprise IC,Modules,Potentiometer,IC Socket,Relay,Connector.Our parts cover such applications as commercial,industrial, and automotives areas.

We are looking forward to setting up business relationship with you and hope to provide you with the best service and solution. Let us make a better world for our industry!



Contact us

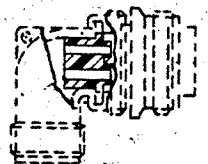
Tel: +86-755-8981 8866 Fax: +86-755-8427 6832

Email & Skype: info@chipsmall.com Web: www.chipsmall.com

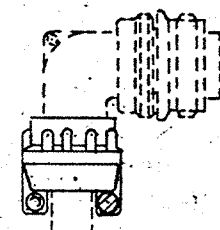
Address: A1208, Overseas Decoration Building, #122 Zhenhua RD., Futian, Shenzhen, China



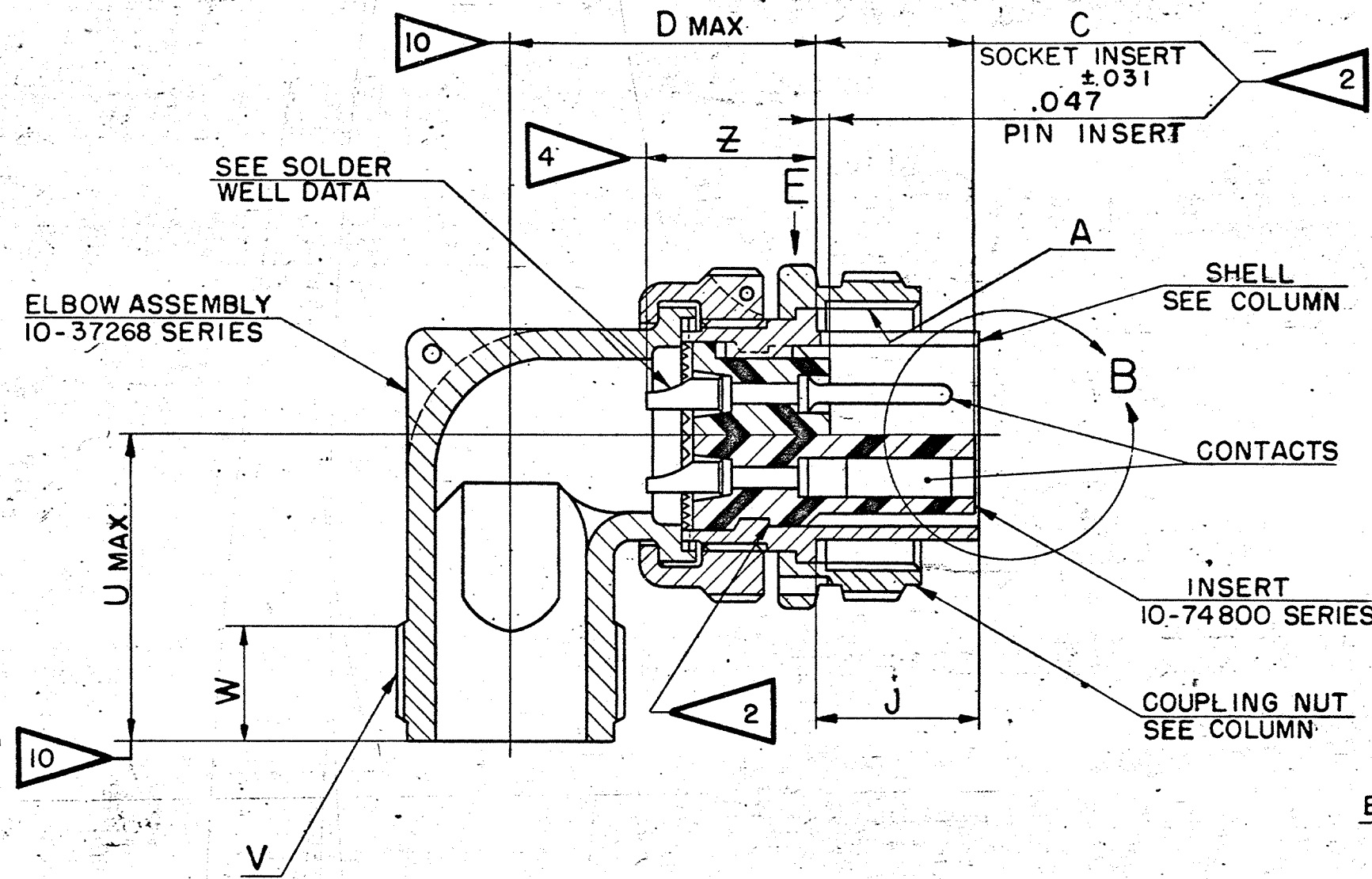
ACCESSORIES
(NOT PART OF STANDARD ASSEMBLY)



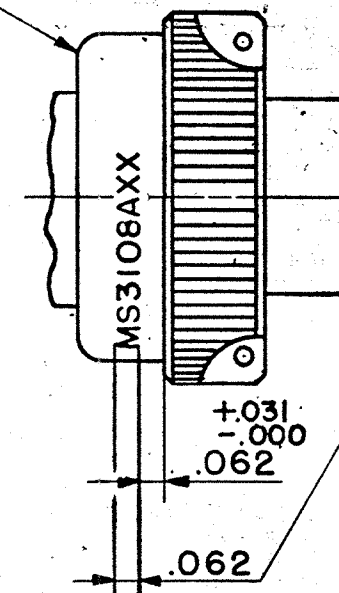
GROMMET
10-40800 SERIES



CABLE CLAMP
10-35900-X3 SERIES

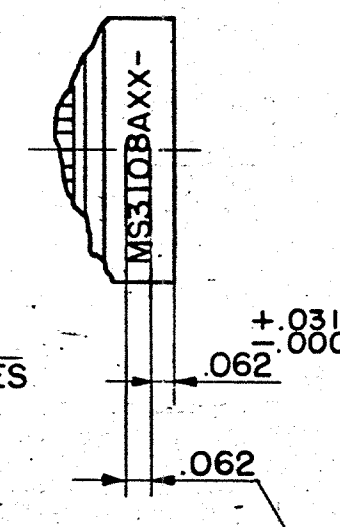


SHELL ASSY
SEE COLUMN

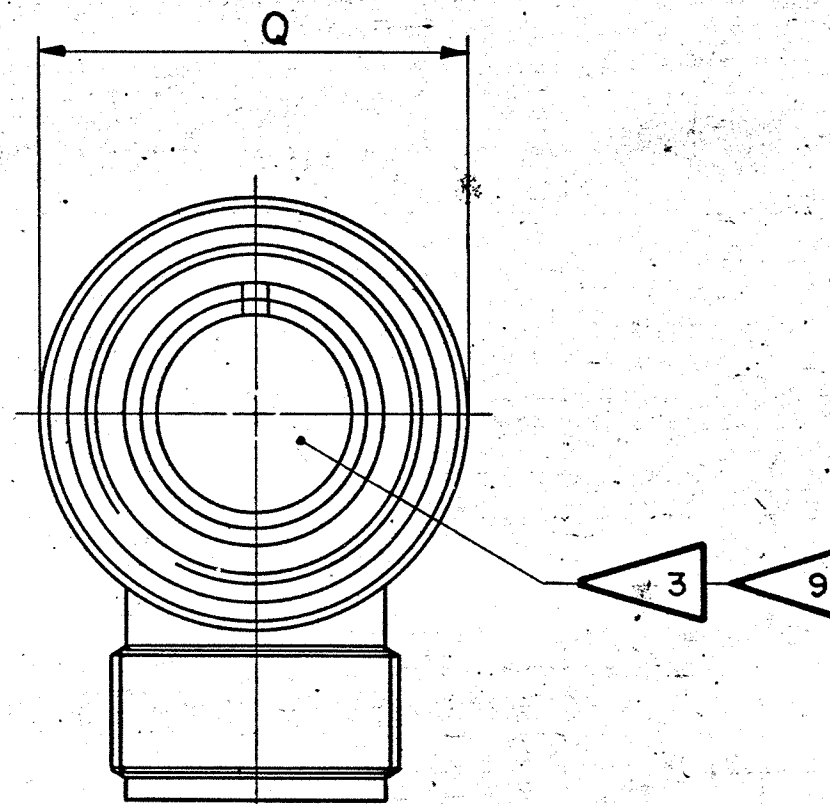


VIEW AT E
IOSL ONLY

STAMP PER 9-2811
EXAMPLE:
MS3108A1OSL-3S BENDIX-7139
NUT MUST TURN FREELY
AFTER STAMPING



VIEW B
EXCEPT IOSL



10-168808 THRU
10-168840

REL.	32508-157	WAS	DATE	D'MAN	APPD.
1	33760-58	ADD. NOTE II & DATA	1-22-58	HUDOCK	
2	35826-5	RELOC & REV C DIM & .000 + .016 - .047	8-30-59	BARTKOW	
A1	36200-27	.188(16M), .250(12) & .500(4) (SOLDER WELL DEPTH); REM SOLDER WELL DATA FOR 16	2-11-60	MAKUSKI	
A2	36525-326	REM PD COL (A & V THDS); REV: NOTE 3, Q DIA COL; ADD NOTE 12.	3-17-60	gachner	
A3	36525-429	ADDED: NOTE 13; REV NOTE 12	7-7-60	PAW'LOK	
A4	42525-45	MIL-C-5015C(NOTE 1)	10-26-63	MILLAR	
A5	51175-1	REM NOTE II, REVISION LETTER (C)(3 PLCS)	11-17-69	Grandall	
A6	53249-14	ADD. 9-3895 (PRO SPEC); REV STAMP NOTE	1-6-72	Grandall	

STAMP PER 9-2811 MS NUMBER, "BENDIX" & DATE CODE (9-3895)
OPPOSITE KEYWAY
EXAMPLE:
MS3108A2Q-12S BENDIX-7139
FOR SUFFIX OTHER THAN "P" OR "S",
STAMP PER 9-2437
(SUFFIX OF MS NUMBER ONLY)
EXAMPLE:
MS3108A20-12SX BENDIX-7139

USE OF THIS DOCUMENT IS UNLIMITED. DOCUMENTS REFERENCED HEREON CONTAIN LIMITED RIGHTS DATA.

SOLDER WELL DATA					
CONTACT SIZE	0	4	8	12	16 M
WELL DIA	469 ⁺⁰⁰⁵ / ₋₀₀₃	332 ⁺⁰⁰⁵ / ₋₀₀₃	209 ⁺⁰⁰⁴ / ₋₀₀₂	116 ⁺⁰⁰⁴ / ₋₀₀₂	.078 ⁺⁰⁰⁴ / ₋₀₀₂
WELL DEPTH ⁺⁰³¹ / ₋₀₀₀	.625	.625	.500	.375	.250

MATERIAL SPEC.	PROCESS SPEC. SEE SHEET 2	SCINTILLA MAGNETO DIVISION BENDIX AVIATION CORPORATION SIDNEY, N. Y., U. S. A.				TOLERANCES UNLESS OTHERWISE SPECIFIED	
HEAT TREAT SPEC.	FINISH SPEC.	NAME: CONNECTOR, ELECTRICAL PLUG, TYPE C-1 JMC 90°				FRACTIONS ±	ANGLES ±
		D'MAN CHECKER MAT. STDS. CH. D'MAN APPROVED SCALE				DECIMALS ± .010	CONCENTRICITY, FIR
		TOOL ACC. COM. REC. 22569-5 4-24-57 5-9-57 5-10-57				SURFACE ROUGHNESS MICRO-INCHES RMS VALUE MAX	
		S.GREER BALANTIN 10/20/57 5-10-57				WEIGHT-LBS. SEE PARTS LIST	
		NONE				SUPERSEDES AND IS NOT INTERCHANGEABLE	
		REF. 10-68808/40				SUPERSEDED BY 10-168808 THRU 10-168840	

SEE SHEET 2.
NOTES: REF SYMBOL

REL	32508-157	WAS	DATE	D'MAN	APPD.
1	33750-58	SEE SHEET I.	1-22-58	HUDOCK	
2	35826-5	SEE SHEET I	8-30-59	BARTKOW	
A1	36200-27	SEE SHEET I	2-11-60	MAKOWSKI	
A2	36325-326	SEE SHEET I.	3-17-60	gachan	
A3	36525-449	SEE SHEET I	7-7-60	PAWLICK	
A4	42525-45	SEE SHEET I	10-2-63	MILAR	
A5		SEE SHEET I FOR ALL CHANGES			
A6					

ASSEMBLY NO.	MS NO.	DIMENSIONS										DETAILS	
		A THREAD CLASS 2B	C +.047 -.000	D MAX	J ±.005	Q DIA MAX	U MAX	V THREAD (PLATED) CLASS 2A	W	Z ±.045	SHELL	COUPLING NUT	
10-168808-	3108 8S-	.5000-28 UNEF	.531	.896	.531	.741	.750	.5000-28 UNEF		.375	.562	10-37266-8	10-37265-8
10-168810-	10S-	.6250-24 NEF	.531	.927	.531	.869	.750	.5000-28 UNEF				-10	-10
10-168811-	10SL-	.6250-24 NEF	.531	.951	.531	.946	.875	.6250-24 NEF				10-113488-II (SHELL ASSY)	
10-168812-	12S-	.7500-20 UNEF	.531	.956	.531	.995						10-37266-12	10-37265-12
10-168813-	12-	.7500-20 UNEF	.719	1.143	.719	.995					.812	-13	-13
10-168814-	14S-	.8750-20 UNEF	.531	1.120	.531	1.123	1.000	.7500-20 UNEF			.562	-14	-14
10-168815-	14-	.8750-20 UNEF	.719	1.207	.719	1.123	1.000	.7500-20 UNEF			.812	-15	-15
10-168816-	16S-	1.0000-20 UNEF	.531	1.146	.531	1.250	1.062	.8750-20 UNEF			.562	-16	-16
10-168817-	16-	1.0000-20 UNEF	.719	1.332	.719	1.250	1.062	.8750-20 UNEF			.812	-17	-17
10-168818-	18-	1.1250-18 NEF		1.395		1.333	1.188	1.0000-20 UNEF				-18	-18
10-168820-	20-	1.2500-18 NEF		1.645		1.461	1.250	1.1875-18 NEF				-20	-20
10-168822-	22-	1.3750-18 NEF		1.645		1.588	1.312	1.1875-18 NEF				-22	-22
10-168824-	24-	1.5000-18 NEF		1.896		1.715	1.438	1.4375-18 NEF				-24	-24
10-168828-	28-	1.7500-18 NS		1.896		1.968	1.500	1.4375-18 NEF				-28	-28
10-168832-	32-	2.0000-18 NS		2.118		2.209	1.750	1.7500-18 NS		.438		-32	-32
10-168836-	36-	2.2500-16 UN		2.176		2.463	1.875	2.0000-18 NS		.500		36	36
10-168840-	40-	2.5000-16 UN		2.301		2.718	2.031	2.2500-16 UN		.500		-40	-40

10-168808 THRU
10-168840

- 5
1. THE UNITS ILLUSTRATED MEET THE REQUIREMENTS OF MS310.8A PER SPEC MIL-C-5015D.
 2. DIMENSIONS MUST BE MAINTAINED WHEN INSERTS ARE PRESSED FIRMLY AGAINST INDICATED SHOULDER.
 3. FOR CONTACT SIZE, SPACING, & SERVICE RATING, SEE DRAWINGS MS33680 THRU MS33690.
 4. INCREASE Z DIMENSION BY .312 FOR SIZE "O" CONTACT ONLY.
 5. TO COMPLETE ASSEMBLY NUMBER & MS NUMBER, ADD APPLICABLE INSERT ARRANGEMENT SUFFIX TO BASE NUMBERS LISTED ABOVE (FOR ALTERNATE ARRANGEMENTS, REFER TO 9-2437.) TO DETERMINE DESIRED INSERT ARRANGEMENT, SEE PARTS LISTS 10-168808 THRU 10-168840.
 6. SEE WORK ORDER FOR PERMISSIBLE ADDITIONAL OR ALTERNATE STAMPING.
 7. SEE DRAWINGS 10-168008 THRU 10-168040 & 10-168208 THRU 10-168240 FOR REQUIRED MATING RECEPTACLE ASSEMBLIES.
 8. ALL LOCKWIRE HOLES ARE .045 DIA MIN.
 9. INSERTS AND CONTACTS ARE REMOVABLE.
 10. DIMENSIONS INDICATE FINAL INSTALLATION. FOR STORAGE & SHIPPING, ELBOW ASSEMBLY MUST BE LOOSELY COUPLED.
 - 11.
 12. FOR PART NUMBERS 10-168817-13, 10-168818-15, & 61, SEE INDIVIDUAL DRAWINGS 10-168817-13, 10-168818-15, & 61-00000.
 13. FOR DIMENSIONS AND STAMPING ON ALL ARRANGEMENTS WITH SUFFIX -50 OR ABOVE, SEE INDIVIDUAL DRAWING OF SAME SHELL SIZE & SUFFIX IN 10-41800 SERIES.

MATERIAL SPEC.	PROCESS SPEC. 1-51 9-3106-5 ASSY 9-3103-1	SCINTILLA MAGNETO DIVISION BENDIX AVIATION CORPORATION SIDNEY, N. Y., U.S.A.				TOLERANCES UNLESS OTHERWISE SPECIFIED			
HEAT TREAT SPEC.	9-2811, 9-2437 9-3895	NAME CONNECTOR, ELECTRICAL PLUG, TYPE C () MC 90°				FRACTIONS ± .010		ANGLES ± .5	
TOOL ACC.	COM. REC. 22569-5	D'MAN: S.GREER CHECKER: Blantia MAT.: STDS: W. J. B. / B. G. / H. M. CH. D'MAN: 5-10-57 APPROVED: 5-9-57 SCALE: NONE				DECIMALS ± .010		CONCENTRICITY ± .010	
		SURFACE ROUGHNESS MICRO-INCHES RMS VALUE MAX				NEXT ASSEMBLY		WEIGHT-LBS. SEE PARTS LIST	
		SUPERSEDES AND IS NOT INTERCHANGEABLE				SUPERSEDED BY		10-168808 THRU 10-168840	
		REF. 10-68808/40				REF. 10-68808/40		REF. 10-68808/40	

NOTES: REF SYMBOL