



Chipsmall Limited consists of a professional team with an average of over 10 year of expertise in the distribution of electronic components. Based in Hongkong, we have already established firm and mutual-benefit business relationships with customers from,Europe,America and south Asia,supplying obsolete and hard-to-find components to meet their specific needs.

With the principle of “Quality Parts,Customers Priority,Honest Operation,and Considerate Service”,our business mainly focus on the distribution of electronic components. Line cards we deal with include Microchip,ALPS,ROHM,Xilinx,Pulse,ON,Everlight and Freescale. Main products comprise IC,Modules,Potentiometer,IC Socket,Relay,Connector.Our parts cover such applications as commercial,industrial, and automotives areas.

We are looking forward to setting up business relationship with you and hope to provide you with the best service and solution. Let us make a better world for our industry!



## Contact us

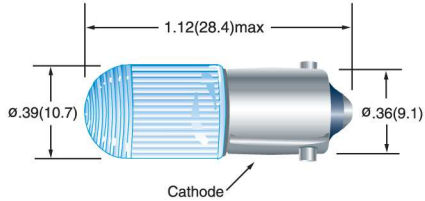
Tel: +86-755-8981 8866 Fax: +86-755-8427 6832

Email & Skype: info@chipsmall.com Web: www.chipsmall.com






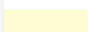
Address: A1208, Overseas Decoration Building, #122 Zhenhua RD., Futian, Shenzhen, China



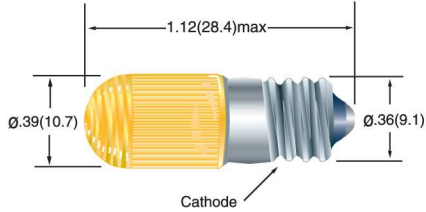
## MB403 MINIATURE LAMP WITH FRESNEL LENS



Available with Center Cathode or Bi-Polar

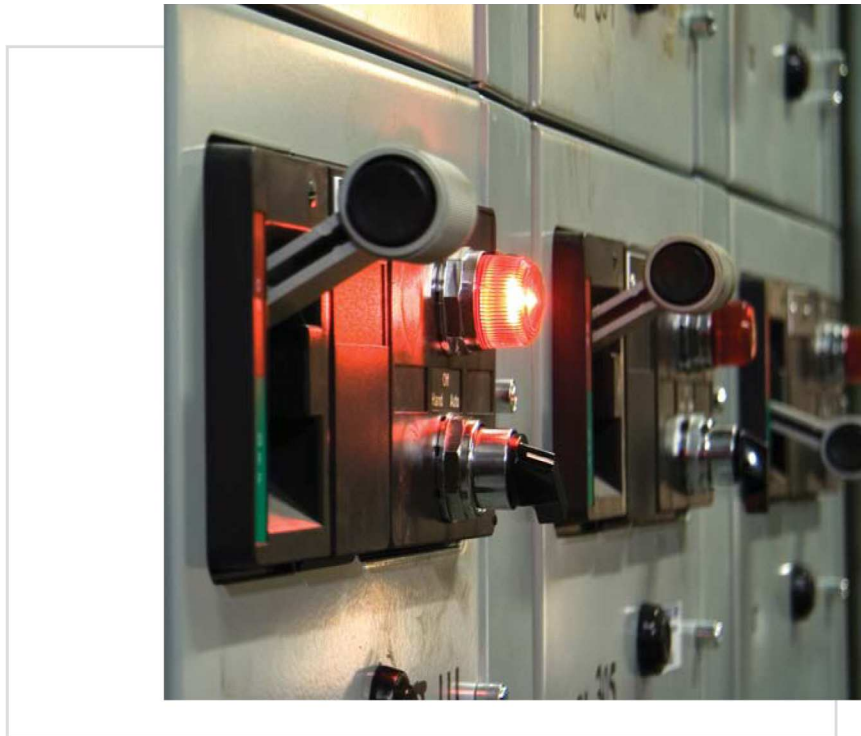
	LED Color	Voltage	Design Current
	Red	5VDC	15-22mA
	Amber	6VDC	15-20mA
	Green	12VDC	15-20mA
	Blue	15VDC	15-20mA
	Cool White	24VDC	15-20mA
	Warm White	28VDC	15-17mA
		48VDC	9-15mA
		60VDC	6-9mA
		120VAC	3.5mA

## MS403 MINIATURE LAMP WITH FRESNEL LENS



Available with Center Cathode or Bi-Polar

	Lens Color
	Red
	Amber
	Green
	Blue
	Clear



All dimensions are in inches (mm)

Tolerances: .xx"(.x) ±.025"(.63)/ .xxx"(.xx)±.010"(.25)  
Specifications are subject to change without notice.