



Chipsmall Limited consists of a professional team with an average of over 10 year of expertise in the distribution of electronic components. Based in Hongkong, we have already established firm and mutual-benefit business relationships with customers from,Europe,America and south Asia,supplying obsolete and hard-to-find components to meet their specific needs.

With the principle of “Quality Parts,Customers Priority,Honest Operation,and Considerate Service”,our business mainly focus on the distribution of electronic components. Line cards we deal with include Microchip,ALPS,ROHM,Xilinx,Pulse,ON,Everlight and Freescale. Main products comprise IC,Modules,Potentiometer,IC Socket,Relay,Connector.Our parts cover such applications as commercial,industrial, and automotives areas.

We are looking forward to setting up business relationship with you and hope to provide you with the best service and solution. Let us make a better world for our industry!



## Contact us

Tel: +86-755-8981 8866 Fax: +86-755-8427 6832

Email & Skype: info@chipsmall.com Web: www.chipsmall.com

Address: A1208, Overseas Decoration Building, #122 Zhenhua RD., Futian, Shenzhen, China



## MS-26 Large Mid Span Slitter - Data Sheet

The Jonard Tools patent pending MS-26 Mid Span Slitter is designed to open fiber jackets and loose buffer tubes to provide easy fiber access. The MS-26 is designed to work on cables or buffer tubes ranging in size from 2.9mm to 6.8mm in diameter. It's sleek ergonomic design allows you to open a jacket or buffer tube without damaging the fiber and features a replaceable cartridge blade set - part number MSB-2968.

The MS-26 was designed with 5 precision grooves which are conveniently identified on the top of the tool. The grooves will handle an assortment of cable sizes

Slitting blades are replaceable (**Part No. MSB-2968**)

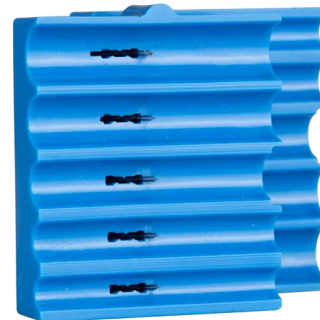
Slots 2.9-3.6, 3.6-4.4, 5.2-6.0 & 6.0-6.8 will slit buffer tubes & jackets to 1.3mm thick.  
Slot 4.4-5.2 will slit buffer tubes & jackets to 1.75mm thick.

### Easy to use:

1. Select the correct groove. Each groove is marked with the recommended fiber size.
2. Place the fiber in the groove to be used. The arrow on the top of the MS-26 indicates blade location and pulling direction.
3. Close the tool making sure the lock is engaged and pull.



MS-26



MSB-2968

SPECIFICATIONS	MS-26	MSB-2968
<b>Cut Type</b>	Slit	Slit
<b>Cable Type</b>	Loose Tube, Jacket	Loose Tube, Jacket
<b>Cable Diameter</b>	2.9-6.8mm	2.9-6.8mm
<b>Features</b>	5 Precision grooves	5 Precision grooves
<b>Weight</b>	0.14lbs (63.5 grams)	0.07lbs (31.75 grams)
<b>UPC No</b>	811490017399	8114900147405