



Chipsmall Limited consists of a professional team with an average of over 10 year of expertise in the distribution of electronic components. Based in Hongkong, we have already established firm and mutual-benefit business relationships with customers from,Europe,America and south Asia,supplying obsolete and hard-to-find components to meet their specific needs.

With the principle of "Quality Parts,Customers Priority,Honest Operation,and Considerate Service",our business mainly focus on the distribution of electronic components. Line cards we deal with include Microchip,ALPS,ROHM,Xilinx,Pulse,ON,Everlight and Freescale. Main products comprise IC,Modules,Potentiometer,IC Socket,Relay,Connector.Our parts cover such applications as commercial,industrial, and automotives areas.

We are looking forward to setting up business relationship with you and hope to provide you with the best service and solution. Let us make a better world for our industry!



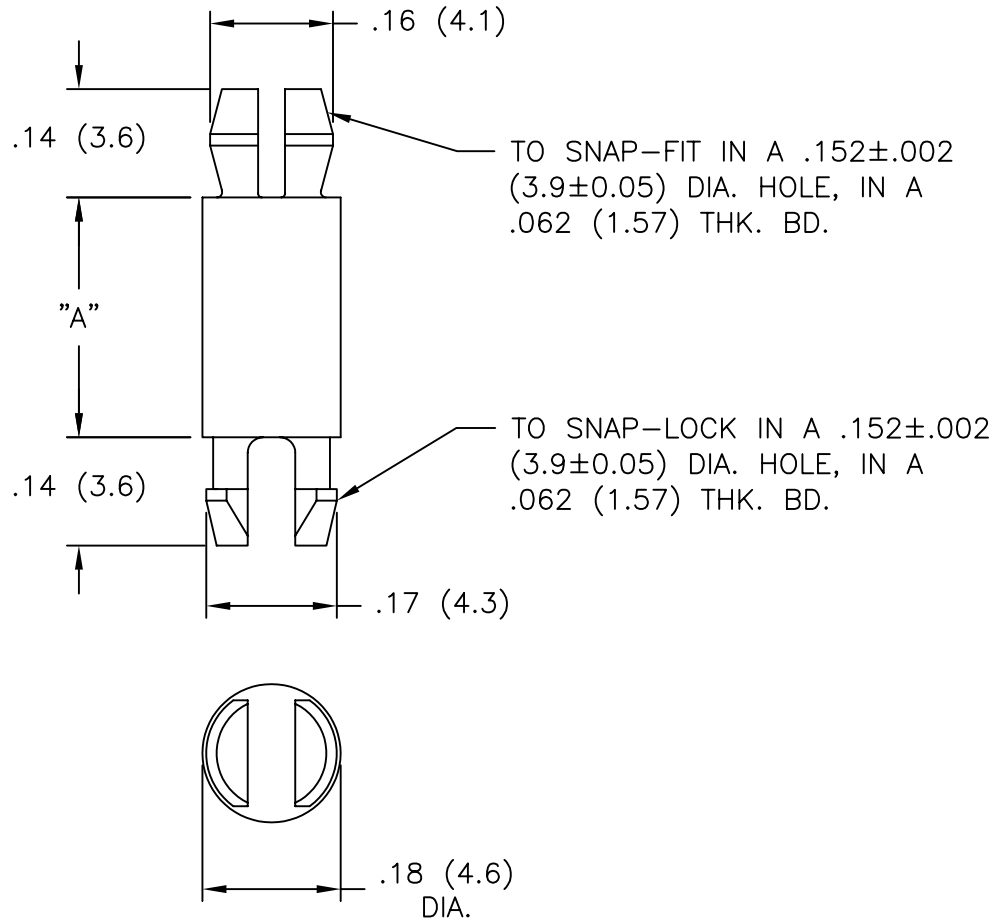
## Contact us

Tel: +86-755-8981 8866 Fax: +86-755-8427 6832

Email & Skype: info@chipsmall.com Web: www.chipsmall.com

Address: A1208, Overseas Decoration Building, #122 Zhenhua RD., Futian, Shenzhen, China





NYLON 6/6 (RMS-01) COLOR: NATURAL PART NO.	FLAME RET. (RMS-19) COLOR: NATURAL PART NO.	DIM. "A"
MSP-2-01	MSP-2-19	1/8 (3.2)
MSP-3-01	MSP-3-19	3/16 (4.8)
MSP-4-01	MSP-4-19	1/4 (6.4)
MSP-5-01	MSP-5-19	5/16 (7.9)
MSP-6-01	MSP-6-19	3/8 (9.5)
MSP-7-01	MSP-7-19	7/16 (11.1)
MSP-8-01	MSP-8-19	1/2 (12.7)
MSP-9-01	MSP-9-19	9/16 (14.3)
MSP-10-01	MSP-10-19	5/8 (15.9)
MSP-11-01	MSP-11-19	11/16 (17.5)
MSP-12-01	MSP-12-19	3/4 (19.1)
MSP-13-01	MSP-13-19	13/16 (20.6)
MSP-14-01	MSP-14-19	7/8 (22.2)
MSP-16-01	MSP-16-19	1 (25.4)
MSP-18-01	MSP-18-19	1-1/8 (28.6)
MSP-20-01	MSP-20-19	1-1/4 (31.8)
MSP-22-01	MSP-22-19	1-3/8 (34.9)
MSP-24-01	MSP-24-19	1-1/2 (38.1)

<table border="1"> <tr> <td>C</td> <td>REMOVED NOTES &amp; CHANGED FILE NO.</td> <td>SM 08.14.02</td> </tr> <tr> <td>B</td> <td>ADDED ...-01 &amp; COLUMN ...-19</td> <td>S.M.02.09.01</td> </tr> <tr> <td>A</td> <td>ADDED -11 AND -13</td> <td>JB 01.06.96</td> </tr> <tr> <td>REV</td> <td>DESCRIPTION</td> <td>ENGR DATE</td> </tr> </table>			C	REMOVED NOTES & CHANGED FILE NO.	SM 08.14.02	B	ADDED ...-01 & COLUMN ...-19	S.M.02.09.01	A	ADDED -11 AND -13	JB 01.06.96	REV	DESCRIPTION	ENGR DATE	<table border="1"> <tr> <td colspan="4">TOLERANCES UNLESS NOTED .XX=±.010 .XXX=±.005 FRAC=1/64 ANG=1°</td> </tr> <tr> <td>FILE #</td> <td>MSP</td> <td>DWN:</td> <td>P.B.</td> </tr> <tr> <td>MAT'L:</td> <td>SEE TABLE</td> <td>DT:</td> <td>03-11-94 DT:</td> </tr> <tr> <td>RE:</td> <td>RICHCO, INC.</td> <td colspan="2">RICHCO INC. PO BOX 804238, CHICAGO, 60680 (773) 539-4060</td> </tr> </table>				TOLERANCES UNLESS NOTED .XX=±.010 .XXX=±.005 FRAC=1/64 ANG=1°				FILE #	MSP	DWN:	P.B.	MAT'L:	SEE TABLE	DT:	03-11-94 DT:	RE:	RICHCO, INC.	RICHCO INC. PO BOX 804238, CHICAGO, 60680 (773) 539-4060		<table border="1"> <tr> <td>TITLE:</td> <td>MINIATURE SUPPORT POST</td> </tr> <tr> <td>DWG IN</td> <td>IN (MM)</td> </tr> <tr> <td>FINAL</td> <td></td> </tr> </table>		TITLE:	MINIATURE SUPPORT POST	DWG IN	IN (MM)	FINAL		<table border="1"> <tr> <td>PART #</td> <td>SEE TABLE</td> </tr> <tr> <td>PRINT TYPE</td> <td>CA</td> </tr> </table>		PART #	SEE TABLE	PRINT TYPE	CA
C	REMOVED NOTES & CHANGED FILE NO.	SM 08.14.02																																														
B	ADDED ...-01 & COLUMN ...-19	S.M.02.09.01																																														
A	ADDED -11 AND -13	JB 01.06.96																																														
REV	DESCRIPTION	ENGR DATE																																														
TOLERANCES UNLESS NOTED .XX=±.010 .XXX=±.005 FRAC=1/64 ANG=1°																																																
FILE #	MSP	DWN:	P.B.																																													
MAT'L:	SEE TABLE	DT:	03-11-94 DT:																																													
RE:	RICHCO, INC.	RICHCO INC. PO BOX 804238, CHICAGO, 60680 (773) 539-4060																																														
TITLE:	MINIATURE SUPPORT POST																																															
DWG IN	IN (MM)																																															
FINAL																																																
PART #	SEE TABLE																																															
PRINT TYPE	CA																																															