



Chipsmall Limited consists of a professional team with an average of over 10 year of expertise in the distribution of electronic components. Based in Hongkong, we have already established firm and mutual-benefit business relationships with customers from,Europe,America and south Asia,supplying obsolete and hard-to-find components to meet their specific needs.

With the principle of “Quality Parts,Customers Priority,Honest Operation,and Considerate Service”,our business mainly focus on the distribution of electronic components. Line cards we deal with include Microchip,ALPS,ROHM,Xilinx,Pulse,ON,Everlight and Freescale. Main products comprise IC,Modules,Potentiometer,IC Socket,Relay,Connector.Our parts cover such applications as commercial,industrial, and automotives areas.

We are looking forward to setting up business relationship with you and hope to provide you with the best service and solution. Let us make a better world for our industry!



Contact us

Tel: +86-755-8981 8866 Fax: +86-755-8427 6832

Email & Skype: info@chipsmall.com Web: www.chipsmall.com

Address: A1208, Overseas Decoration Building, #122 Zhenhua RD., Futian, Shenzhen, China



MSP



RoHS Compliant



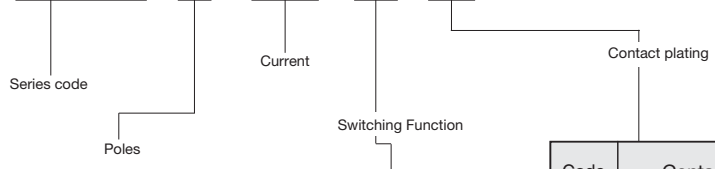
Pushbutton Switches

Specifications

Contact specs.		Silver plated contacts	Gold plated contacts
Rating	Max.	3A 125VAC	25mA 20VDC
Initial contact resistance		20mΩ max. (1A 2~4VDC)	20mΩ max. (5mA 200μVAC)
Dielectric strength		1,000VAC 1 minute	
Insulation resistance		100MΩ min.	(500VDC)
Electrical life		5,000 operations	

Part Numbering

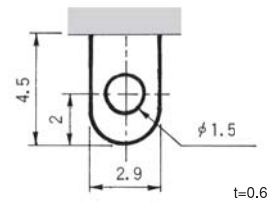
MSP 1 03 B G - Z



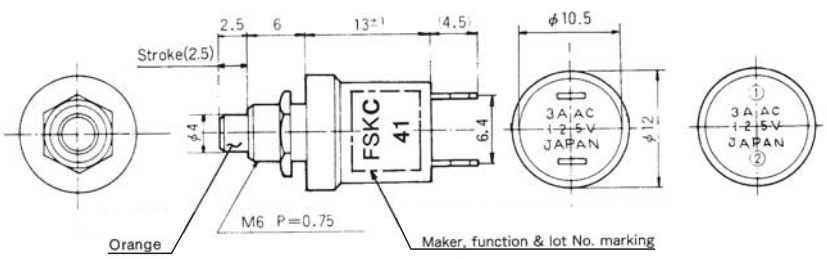
Code	Switching Function
B	ON - (OFF)
C	OFF - (ON)

Code	Contact plating
None	Silver plated
G	Gold plated

Terminal Style



SPST



Terminal numbers are not shown on the switch.

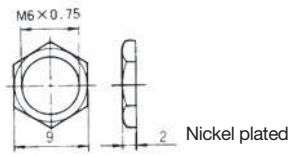
Switching function	Push	
	ON	(OFF)
Part No.		
MSP103B-Z	ON	(OFF)
▲ MSP103BG-Z	ON	(OFF)
Connecting terminals	1-2	—
MSP103C-Z	OFF	(ON)
★ MSP103CG-Z	OFF	(ON)
Connecting terminals	—	1-2

Standard Accessories

(Supplied with switch)

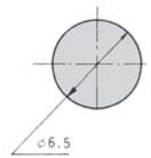
Hex Nut

140008010237



Panel Cut-Out Dimensions

Panel thickness : 3.5 mm max.



Soldering Specifications

- (1) Manual Soldering
Device : Soldering iron
- (2) 380°C, 3 seconds, Max.

(ON)&(OFF) : Momentary.

▲ : Inquiry products.

★ : Made to order products.