



Chipsmall Limited consists of a professional team with an average of over 10 year of expertise in the distribution of electronic components. Based in Hongkong, we have already established firm and mutual-benefit business relationships with customers from,Europe,America and south Asia,supplying obsolete and hard-to-find components to meet their specific needs.

With the principle of “Quality Parts,Customers Priority,Honest Operation,and Considerate Service”,our business mainly focus on the distribution of electronic components. Line cards we deal with include Microchip,ALPS,ROHM,Xilinx,Pulse,ON,Everlight and Freescale. Main products comprise IC,Modules,Potentiometer,IC Socket,Relay,Connector.Our parts cover such applications as commercial,industrial, and automotives areas.

We are looking forward to setting up business relationship with you and hope to provide you with the best service and solution. Let us make a better world for our industry!



## Contact us

Tel: +86-755-8981 8866 Fax: +86-755-8427 6832

Email & Skype: [info@chipsmall.com](mailto:info@chipsmall.com) Web: [www.chipsmall.com](http://www.chipsmall.com)

Address: A1208, Overseas Decoration Building, #122 Zhenhua RD., Futian, Shenzhen, China



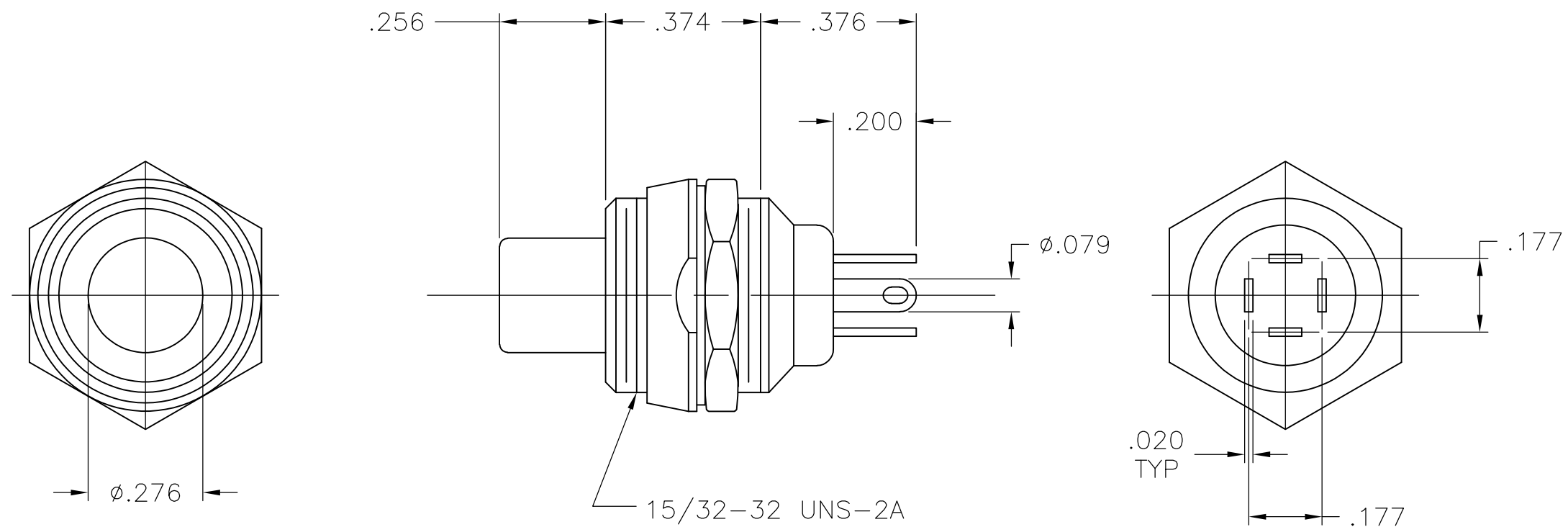
	A	REVISED PER ECO-07-029644	1/11/08	SS	MW
--	---	---------------------------	---------	----	----

D

C

B

A



RECOMMENDED PANEL CUTOUT

TERMINAL DETAIL

SPECIFICATIONS:

MATERIALS:  
CASE: THERMOSET.  
ACTUATOR BUTTON: THERMOPLASTIC. COLOR: SEE CHART.  
MOVING CONTACT: COPPER ALLOY, SILVER PLATE.  
FIXED CONTACT: COPPER ALLOY, SILVER PLATE.  
TERMINALS: COPPER ALLOY, SILVER PLATE.  
TERMINAL SEAL: EPOXY.

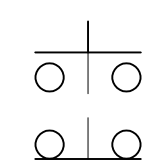
ELECTRICAL:  
CONTACT RATING: 0.5 AMPS AT 125 VAC.  
INITIAL CONTACT RESISTANCE: 100 MILLIOHMS.  
INSULATION RESISTANCE: 1,000 MEGOHMS MIN.  
DIELECTRIC STRENGTH: 1000V RMS AT SEA LEVEL.  
LIFE EXPECTANCY: 10,000 CYCLES.

MECHANICAL:  
ACTUATION TRAVEL: .098.

ENVIRONMENTAL:  
OPERATING TEMPERATURE: -4°F TO +176°F(-20°C TO +80°C).  
STORAGE TEMPERATURE: -4°F TO +176°F(-20°C TO +80°C).

NOTES:


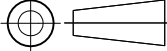
- INTERPRET DRAWING PER ASME Y14.5M-1994.
- SUPPLIED WITH MOUNTING HARDWARE:
  - (1) WASHER
  - (1) N-35 DECORATIVE NUT
  - (1) HEX NUT.
- RECOMMENDED HAND SOLDER TEMP. OF 420C FOR 5 SECONDS.



NORMALLY OPEN / NORMALLY CLOSED

CIRCUIT DIAGRAM

NORMALLY OPEN / NORMALLY CLOSED		2 CKT	WHITE	MSPF-101BC-9	9-1437567-2
NORMALLY OPEN / NORMALLY CLOSED		2 CKT	BLUE	MSPF-101BC-6	9-1437567-1
NORMALLY OPEN / NORMALLY CLOSED		2 CKT	RED	MSPF-101BC-2	9-1437567-0
NORMALLY OPEN / NORMALLY CLOSED		2 CKT	BLACK	MSPF-101BC-0	8-1437567-9
ACTION		TYPE	ACTUATOR COLOR	MODEL NO.	PART NUMBER

THIS DRAWING IS A CONTROLLED DOCUMENT.		DWN S SCHLEGEL	11JAN2008	 Tyco Electronics Corporation Harrisburg, PA 17105-3608			
		CHK M WILBOURN	1/16/08				
DIMENSIONS: INCHES	TOLERANCES UNLESS OTHERWISE SPECIFIED:	APVD M WILBOURN	1/16/08	NAME  PUSH BUTTON MOMENTARY (MSPF-101BC SERIES)  —			
	0 PLC ± — 1 PLC ± — 2 PLC ± — 3 PLC ± .010 4 PLC ± —	PRODUCT SPEC —	—				
	ANGLES ± 1°	APPLICATION SPEC —	—				
MATERIAL —	FINISH —	WEIGHT —	A2	SIZE 00779	CAGE CODE C=9-1437567-1	DRAWING NO	RESTRICTED TO —
CUSTOMER DRAWING				SCALE NTS	SHEET 1 of 1	REV A	