



Chipsmall Limited consists of a professional team with an average of over 10 year of expertise in the distribution of electronic components. Based in Hongkong, we have already established firm and mutual-benefit business relationships with customers from,Europe,America and south Asia,supplying obsolete and hard-to-find components to meet their specific needs.

With the principle of “Quality Parts,Customers Priority,Honest Operation,and Considerate Service”,our business mainly focus on the distribution of electronic components. Line cards we deal with include Microchip,ALPS,ROHM,Xilinx,Pulse,ON,Everlight and Freescale. Main products comprise IC,Modules,Potentiometer,IC Socket,Relay,Connector.Our parts cover such applications as commercial,industrial, and automotives areas.

We are looking forward to setting up business relationship with you and hope to provide you with the best service and solution. Let us make a better world for our industry!



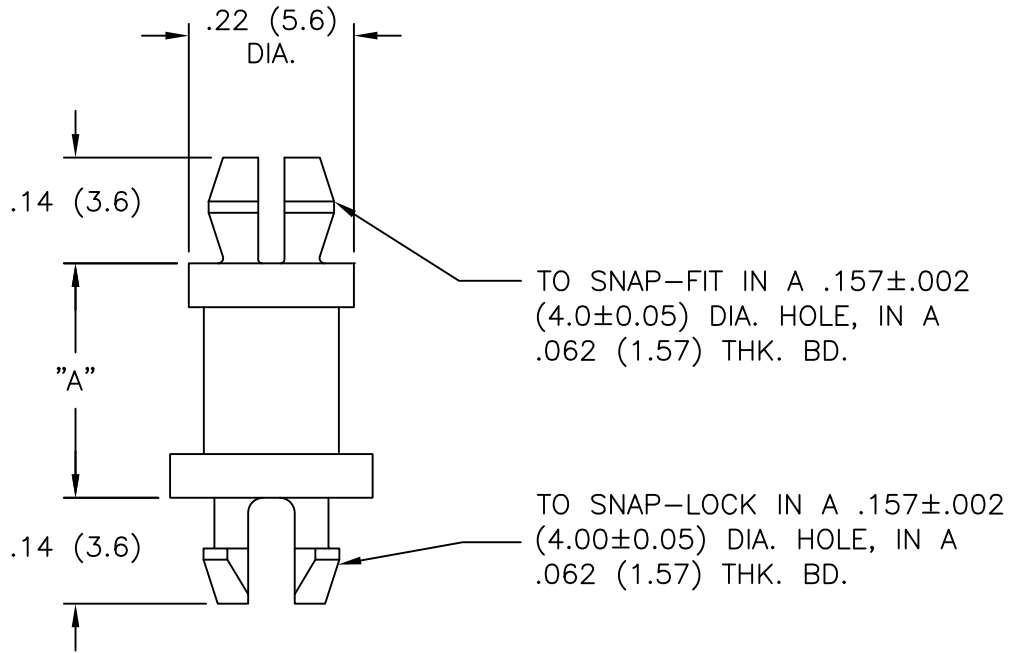
Contact us

Tel: +86-755-8981 8866 Fax: +86-755-8427 6832

Email & Skype: info@chipsmall.com Web: www.chipsmall.com

Address: A1208, Overseas Decoration Building, #122 Zhenhua RD., Futian, Shenzhen, China





NYLON 6/6 (RMS-01) COLOR: NATURAL PART NO.	FLAME RET. (RMS-19) COLOR: NATURAL PART NO.	DIM. "A"
MSPS-3-01	MSPS-3-19	3/16 (4.8)
MSPS-4-01	MSPS-4-19	1/4 (6.4)
MSPS-5-01	MSPS-5-19	5/16 (7.9)
MSPS-6-01	MSPS-6-19	3/8 (9.5)
MSPS-7-01	MSPS-7-19	7/16 (11.1)
MSPS-8-01	MSPS-8-19	1/2 (12.7)
MSPS-10-01	MSPS-10-19	5/8 (15.9)
MSPS-11-01	MSPS-11-19	11/16 (17.5)
MSPS-12-01	MSPS-12-19	3/4 (19.1)
MSPS-14-01	MSPS-14-19	7/8 (22.2)

REV	DESCRIPTION	ENGR	DATE
E	SEE CO 200628 FOR CHANGES	SK	02.17.11
D	SEE CO 200053 FOR CHANGES	RG	10.24.07
C	SEE ECN #862 FOR CHANGES	SM	10.04.04
B	SEE ENC #496 FOR CHANGES	SM	10.23.02
A	REMOVED NOTES; ADDED COLUMN "-19" AND "-01 TO P/N; CHANGED FILE NO.	SM	08.15.02

TITLE: MINIATURE SUPPORT POST		⊕	▭	DWG IN IN (MM)	Ⓜ
TOLERANCES UNLESS NOTED .XX=±.010 .XXX=±.005 FRAC=±1/64 ANG=±1°	FILE # MSPS MAT'L: SEE TABLE RE: RICHCO, INC.	DWN: P.B. DT: 04-18-94	APP: DT:	FINAL	PART # SEE TABLE
RICHCO INC. PO BOX 804238, CHICAGO, 60680 (773) 539-4060		PRINT TYPE CA			