



Chipsmall Limited consists of a professional team with an average of over 10 year of expertise in the distribution of electronic components. Based in Hongkong, we have already established firm and mutual-benefit business relationships with customers from,Europe,America and south Asia,supplying obsolete and hard-to-find components to meet their specific needs.

With the principle of “Quality Parts,Customers Priority,Honest Operation,and Considerate Service”,our business mainly focus on the distribution of electronic components. Line cards we deal with include Microchip,ALPS,ROHM,Xilinx,Pulse,ON,Everlight and Freescale. Main products comprise IC,Modules,Potentiometer,IC Socket,Relay,Connector.Our parts cover such applications as commercial,industrial, and automotives areas.

We are looking forward to setting up business relationship with you and hope to provide you with the best service and solution. Let us make a better world for our industry!



Contact us

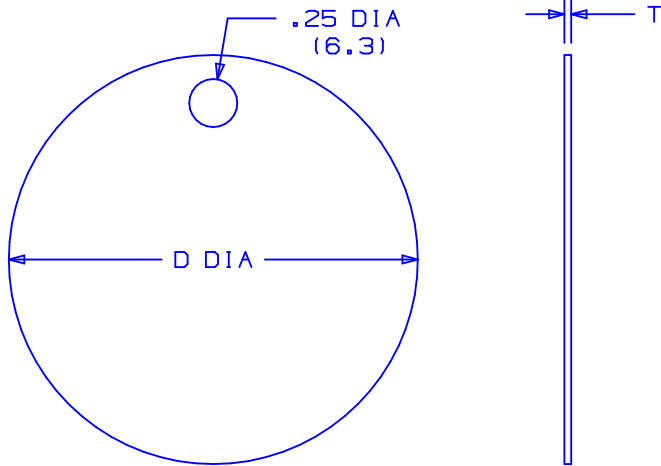
Tel: +86-755-8981 8866 Fax: +86-755-8427 6832

Email & Skype: info@chipsmall.com Web: www.chipsmall.com

Address: A1208, Overseas Decoration Building, #122 Zhenhua RD., Futian, Shenzhen, China




PANDUIT PART NO.	MATERIAL	PACKAGE QTY.	DIAMETER "D" ±.02 (.5)	THICKNESS "T" ±.002 (.05)
MT1D-Q	304 SS.	25	1.00 (25.4)	.035 (.89)
MT1D-Q316	316 SS.	25	1.00 (25.4)	.035 (.89)
MTB1D-Q	BRASS	25	1.00 (25.4)	.040 (1.02)
MT150D-Q	304 SS.	25	1.50 (38.1)	.035 (.89)
MT150D-Q316	316 SS.	25	1.50 (38.1)	.035 (.89)
MTB150D-Q	BRASS	25	1.50 (38.1)	.040 (1.02)
MT213D-Q	304 SS.	25	2.13 (54.1)	.015 (.38)
MT213D-Q316	316 SS.	25	2.13 (54.1)	.015 (.38)
MTB213D-Q	BRASS	25	2.13 (54.1)	.015 (.38)



NOTES:

1. DIMENSIONS IN () ARE IN mm.
2. CUSTOM PERMANENT MARKING AVAILABLE. CONSULT FACTORY.

S41100_02

02	8/05	JAMBEJD	ADDED PART NO'S.MT1D-Q316, MT150D-Q316,& MT213D-Q316 TO TABLE	SS00018	---	---	 PANDUIT CORP. TINLEY PARK, ILLINOIS CIRCULAR 1-HOLE STAINLESS AND BRASS METAL TAGS				
01	10/03	BRHDPN	UPDATED METRIC VALUES IN TABLE.	11170	CCH	JJB					
00	3/98	TMNJS	DWG. RELEASED	00681	DRH	LCA					
REV	DATE	BY	CHK	DESCRIPTION	ECN #	PM	CUST	DRAWN BY TSM	CHK'D NJS	SCALE N/A	DRAWING NO. S41100