



Chipsmall Limited consists of a professional team with an average of over 10 year of expertise in the distribution of electronic components. Based in Hongkong, we have already established firm and mutual-benefit business relationships with customers from,Europe,America and south Asia,supplying obsolete and hard-to-find components to meet their specific needs.

With the principle of “Quality Parts,Customers Priority,Honest Operation,and Considerate Service”,our business mainly focus on the distribution of electronic components. Line cards we deal with include Microchip,ALPS,ROHM,Xilinx,Pulse,ON,Everlight and Freescale. Main products comprise IC,Modules,Potentiometer,IC Socket,Relay,Connector.Our parts cover such applications as commercial,industrial, and automotives areas.

We are looking forward to setting up business relationship with you and hope to provide you with the best service and solution. Let us make a better world for our industry!



## Contact us

Tel: +86-755-8981 8866 Fax: +86-755-8427 6832

Email & Skype: info@chipsmall.com Web: www.chipsmall.com

Address: A1208, Overseas Decoration Building, #122 Zhenhua RD., Futian, Shenzhen, China



**Products**

- Products Overview
- Product Search**
- Evaluate
  - FAQ's
- How to Buy
  - Bill of Material
  - Favorite Products List
  - Locate Distributor

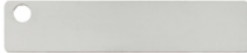
Home > Products Overview > Product Search >

Current refinements (click  to remove) [Search Tips](#)

Part Number > MT206W119A-Q

Your search criteria matched only one product, shown below

### MT206W119A-Q



- Provides permanent identification of pipes, conduit, valves, cables and equipment in harsh environments
- Designed for use with Panduit® Pan-Steel® Stainless Steel Cable Ties for fast installation at lowest installed cost
- All marker plates/tags can be embossed or laser etched with Panduit Factory Custom Marking Service
- For on-site custom marking use the metal indenting machine
- Designated plates feature easy feed design with a raised slot to simplify cable tie installation and improve productivity

Panduit stainless steel cable ties, strapping, stainless steel, brass and aluminum marker plates/tags and anodized aluminum locks can be custom marked for identification of equipment, cables, hoses, pipes, conduit, etc. in petrochemical plants, power plants, pulp and paper mills, breweries, and many other applications. The Panduit in-house computer controlled custom marking systems provide sharp, crisp, high quality legends. Sequential numbering for serialization

is available.

Part Number	MT206W119A-Q
RoHS Compliancy Status	Compliant
Part Description	Marker tag (dog tag type), 304 Stainless Steel, 2.1" x 1.2".
Product Type	Marker Tag
Material	304 Stainless Steel
Color	Natural
Length (In.)	2.06
Length (mm)	52.0
Width (In.)	1.19 Dog Tag
Width (mm)	30.0
Pricing Description	Marker Tag, 304 SS, Dog Tag, 2.1" (53mm) x 1.2" (30mm)
Used with Pan-Steel Ties	MLT-S
Min. Order UOM	PC
Min. Order Qty.	25
BOM Qty. (# of Pkgs.)	<input type="text" value="0"/>
Add to Favorite Product List	<input type="button" value=""/>

Please [register](#) to utilize the 'Bill of Materials', 'Submit Quotes' and 'Favorite Product List' features.