



Chipsmall Limited consists of a professional team with an average of over 10 year of expertise in the distribution of electronic components. Based in Hongkong, we have already established firm and mutual-benefit business relationships with customers from,Europe,America and south Asia,supplying obsolete and hard-to-find components to meet their specific needs.

With the principle of “Quality Parts,Customers Priority,Honest Operation,and Considerate Service”,our business mainly focus on the distribution of electronic components. Line cards we deal with include Microchip,ALPS,ROHM,Xilinx,Pulse,ON,Everlight and Freescale. Main products comprise IC,Modules,Potentiometer,IC Socket,Relay,Connector.Our parts cover such applications as commercial,industrial, and automotives areas.

We are looking forward to setting up business relationship with you and hope to provide you with the best service and solution. Let us make a better world for our industry!



## Contact us

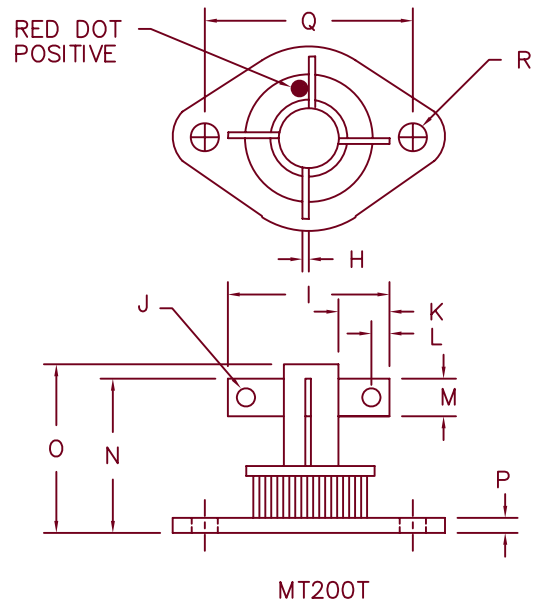
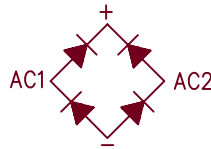
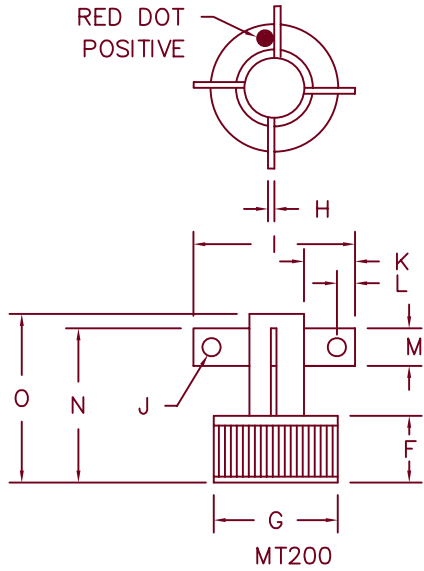
Tel: +86-755-8981 8866 Fax: +86-755-8427 6832

Email & Skype: info@chipsmall.com Web: www.chipsmall.com

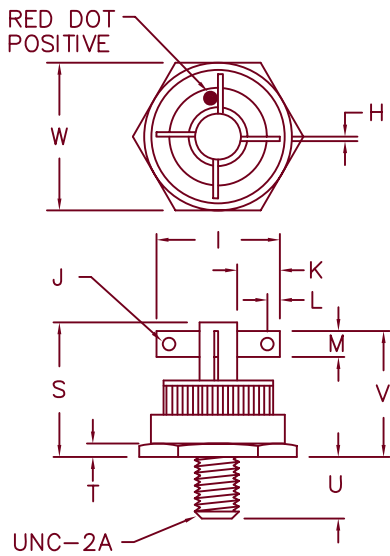
Address: A1208, Overseas Decoration Building, #122 Zhenhua RD., Futian, Shenzhen, China



# Single 25A Full Wave Rectifier MT200 — MT800



Note: Electrically Isolated



Dim.	Inches		Millimeter		Notes
	Minimum	Maximum	Minimum	Maximum	
F	.390	.420	9.90	10.67	
G	.751	.755	19.07	19.18	
H	---	.032 typ.	---	---	
I	---	1.0	---	25.4	
J	---	.11 typ.	---	---	Dia.
K	.250	---	6.35	---	
L	---	.125 Typ.	---	---	
M	---	.187 Typ.	---	---	
N	---	.830	---	21.08	

Dim.	Inches		Millimeter		Notes
	Minimum	Maximum	Minimum	Maximum	
O	---	.930	---	23.62	
P	---	.135	---	3.43	
Q	1.177	1.197	29.90	30.40	
R	.151	.161	3.84	4.10	Dia.
S	---	1.20	---	30.48	
T	---	.125 typ.	---	---	
U	.340	.400	8.64	10.16	
V	---	1.10	---	27.94	
W	---	.875	---	22.83	

# MT200 — MT800

Microsemi  
Catalog Number

MT200  
MT400  
MT600  
MT800

Repetitive Peak  
Reverse Voltage

200V  
400V  
600V  
800V

- Glass Passivated Die
- Hermetically sealed
- Soft Recovery
- 200°C Junction temperature
- 2000VDC Isolation voltage

## Electrical Characteristics

DC forward current output  
Maximum Surge Current  
Maximum  $I^2t$  For Fusing  
Max. Peak Forward Voltage per leg  
Max. Peak Reverse Current  
Max. Peak Reverse Current

$I_o$  25A  
 $I_{FSM}$  200 Amps  
 $I^2t$  165A<sup>2</sup>s  
 $V_{FM}$  1.3 Volts  
 $I_{RM}$  10  $\mu$ A  
 $I_{RM}$  1.0 mA

$T_C = 130^\circ\text{C}$   
8.3mS, half sine,  $T_C = 130^\circ\text{C}$   
 $I_{FM} = 25\text{A}; T_J = 25^\circ\text{C}$   
 $V_{RM}$  rated,  $T_J = 25^\circ\text{C}$   
 $V_{RM}$  rated,  $T_J = 150^\circ\text{C}$

## Thermal and Mechanical Characteristics

Storage temperature range  
Operating junction temperature range  
Max thermal resistance per package

$T_{STG}$   
 $T_{OP}$   
 $R_{\theta JC}$

-65°C to +200°C  
-65°C to +200°C  
1.0°C/W

# MT200 – MT800

Figure 1  
Maximum Forward Characteristics

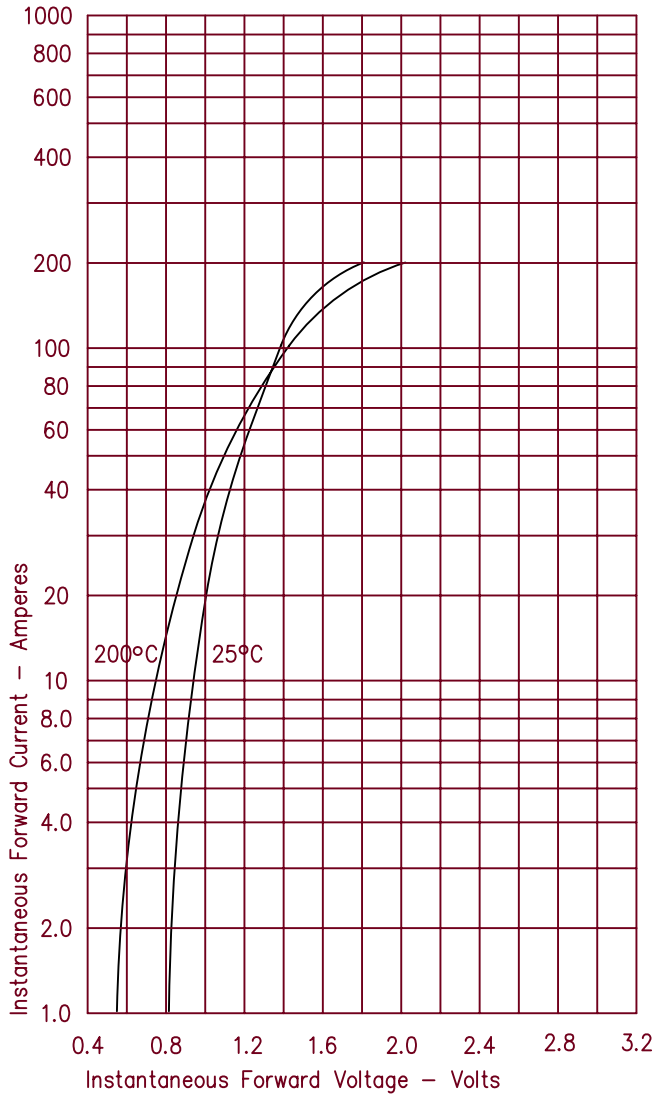


Figure 3  
Forward Current Derating

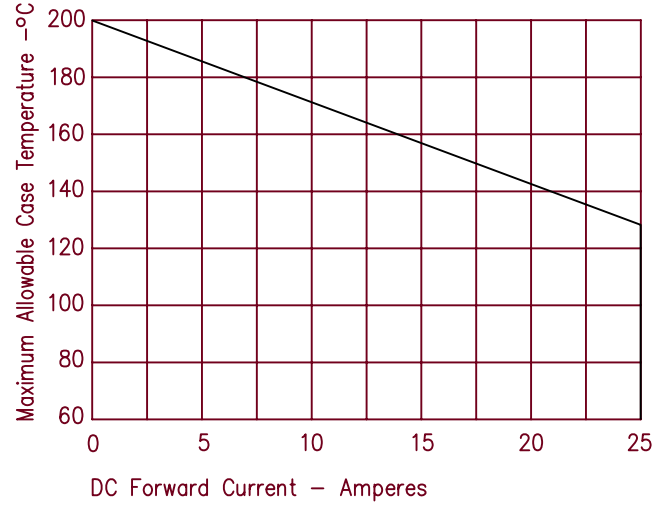


Figure 2  
Typical Reverse Characteristics

