



Chipsmall Limited consists of a professional team with an average of over 10 year of expertise in the distribution of electronic components. Based in Hongkong, we have already established firm and mutual-benefit business relationships with customers from,Europe,America and south Asia,supplying obsolete and hard-to-find components to meet their specific needs.

With the principle of "Quality Parts,Customers Priority,Honest Operation,and Considerate Service",our business mainly focus on the distribution of electronic components. Line cards we deal with include Microchip,ALPS,ROHM,Xilinx,Pulse,ON,Everlight and Freescale. Main products comprise IC,Modules,Potentiometer,IC Socket,Relay,Connector.Our parts cover such applications as commercial,industrial, and automotives areas.

We are looking forward to setting up business relationship with you and hope to provide you with the best service and solution. Let us make a better world for our industry!



Contact us

Tel: +86-755-8981 8866 Fax: +86-755-8427 6832

Email & Skype: info@chipsmall.com Web: www.chipsmall.com

Address: A1208, Overseas Decoration Building, #122 Zhenhua RD., Futian, Shenzhen, China



MultiModem® ZBA



V.92 Desktop Business Modems

The MultiModem® ZBA V.92 business modem supports remote configuration, callback security, out of band management, as well as dial-up and 2-wire leased line connections making it the modem of choice for business applications. With V.92, this modem provides an increase in upload speeds and quicker connect times than traditional V.90 modems. It offers V.34/33.6K fax and Error Correction Mode, that reduces fax transmission time by more than half when compared to traditional fax modems. In addition, all models are globally approved for use in many countries around the world. This means one model can ship virtually anywhere.



Features

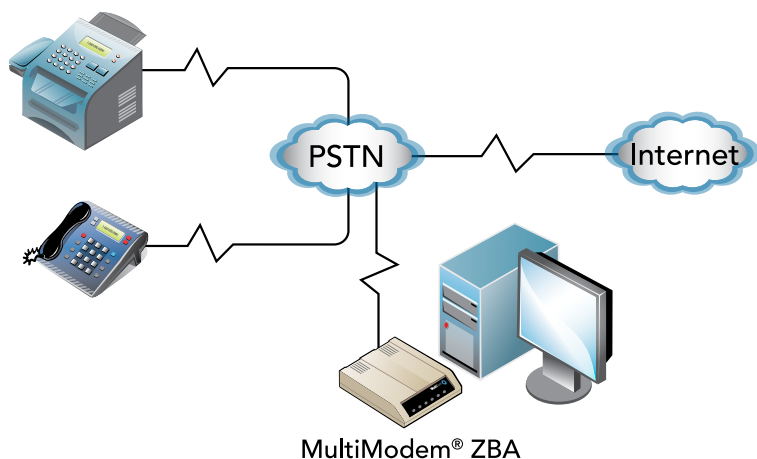
- V.92/56K download speeds and 48K upload speeds when connecting with V.92 servers
- Dial-up and 2-wire leased line support*
- V.44 compression improves data throughput rates
- Class 1.0 and Class 2.1 faxing at speeds to V.34/33.6K bps (Super G3)
- Error Correction Mode (ECM) provides fast and reliable fax transmissions
- CDC-ACM compliant for simple one-step installation
- Out of band management available through factory settings or field configuration
- Linux compatible
- U.S. Caller ID reporting
- Remote configuration for centralized setup and control
- Callback Security for network security and reduced telephone toll charges**
- Voice mail support and full-duplex speaker phone operation on voice models
- Globally approved models for use in many countries worldwide
- Small footprint and stackable design
- Self-resetting lightning protection
- Flash memory for easy updates
- RS-232 or USB cable included
- Two-year warranty

* USB model dial-up only.

** RS-232 model only.

Benefits

- Increased upload speeds
- V.34/33.6K Super G3 Fax
- Globally approved



Specifications

Rates

Server-to-client Data: USB Model: V.90 speeds when accessing a V.90 or V.92
Serial Model: Up to 48Kbps when accessing a V.92 server

Client-to-server Data: USB Model: Up to 50Kbps when accessing a V.92 server
Serial Model: Up to 48Kbps when accessing a V.92 server

Client-to-client Data: up to 33,6K bps

Fax Data: up to 33,6K bps

Standards

Modem Compatibility: USB Model: ITU-T V.92, V.90, V.34 enhanced, V.34, V.34bis, V.32, V.32bis, V.22; Bell 212A & 103; ITU-T V.21, V.42, V.42bis, V.44
Serial Model: ITU-T V.92, V.90, V.34 enhanced, V.34, V.32bis, V.32, V.22bis, V.22; Bell 212A & 103/113; ITU-T V.21 & V.23; V.42, V.42bis, V.44
Fax Compatibility: ITU-T "Super" Group 3, Class 1.0, 2.0, 2.1, T.4, T.30, V.21, V.27ter, V.29, V.34, V.17; TIA/EIA 578 Class 1, 2, TR29.2

Error Correction: ITU-T V.42

Data Compression: USB Model: ITU-T V.44, V.42bis, MNP 5
Serial Model: ITU-T V.44

Flow Control: XON/XOFF (software), RTS/CTS (hardware)

Voice Compatibility (-V models only): TIA/EIA IS-101

Video: ITU-T V.80 for H.324 video conferencing (serial model only)

Connectors

RS-232 Model: 2 RJ-11s & DB25

USB Model: 2 RJ-11s & 1 USB type B

Cables

RS-232 Model: 1 RS-232 cable & 1 RJ-11 cable

USB Model: 1 USB cable & 1 RJ-11 cable

Operation

RS-232 Model: Async/230.4K bps

Dial-up or 2-wire leased line

USB Model: USB 1.1/12M bps Dial-up

Operating System Support

Windows 2000/XP/2003/Vista/2008/7

(32-bit/64-bit), Linux, & Mac OS 10.4 or greater

USB Model: CDC-ACM compliant

Physical Description & Operating Environment

4.3" w × 1.2" h × 5.8" d; 8 oz (10.8 cm × 2.9 cm × 14.8 cm; 227g)

+32° to +120° F (0° to +50° C); 20-90% noncondensing

Approvals

CE Mark

EMC: EN 55022/FCC Class B, EN 55024

Safety: c/UL 60950-1 2nd Ed, IEC 60950-1 2nd Ed, CCC & NALTE, AS/NZS 60950:2000

Telecom: 47CFR Part 68, CS-03, R&TTE, NALTE, A-Tick

Other countries also included

Ordering Information

Product	Description	Region
MT9234ZBA-IEC*	V.92 Data/Fax World Modem	Global
MT9234ZBA-IEC-OBM**	V.92 Data/Fax World Modem	Global
MT9234ZBA-NAM	V.92 Data/Fax World Modem	Global
MT9234ZBA-EU	V.92 Data/Fax World Modem	Global
MT9234ZBA-GB/IE	V.92 Data/Fax World Modem	Global
MT9234ZBA-NPS†	V.92 Data/Fax World Modem	Global
MT9234ZBA-V-NAM	V.92 Voice/Data/Fax World Modem	Global
MT9234ZBA-V-EU	V.92 Voice/Data/Fax World Modem	Global
MT9234ZBA-V-GB/IE	V.92 Voice/Data/Fax World Modem	Global
MT9234ZBA-V-IEC*	V.92 Voice/Data/Fax World Modem	Global
MT9234ZBA-V-NPS†	V.92 Voice/Data/Fax World Modem	Global
MT9234ZBA-USB-CDC-XR	V.92 Data/Fax World Modem	Global

* Ships without power cord and telco adapter. Localization kit sold separately.

** -OBM -out of band management.

† Ships without power supply.

Services & Warranty

Multi-Tech's comprehensive Support Services programs offer a full array of options to suit your specific needs. These services are aimed at protecting your investment, extending the life of your solution or product, and reducing total cost of ownership. Our seasoned technical experts, with an average tenure of more than 10 years, can walk you through smooth installations, troubleshoot issues and help you with configurations. Products include a 2-year warranty that can be extended up to 5 years via Multi-Tech's Extended Warranty program, which offers the convenience of Overnight Service* for optimal uptime.

Extended Warranty & Overnight Services

To give you peace-of-mind and protect your investment, our Extended Warranty Service Plans ensure your Multi-Tech products are covered for 1, 2, or 3 years beyond the manufacturer's warranty with an optional Overnight Service plan*.

Installation Support

Multi-Tech's Installation Support Service delivers priority service with the ability to work one-on-one with an experienced Multi-Tech technical support engineer, to guide you through the installation process for our products.

Technical Support Services

At Multi-Tech, we're committed to providing you personalized attention and quality service while providing you a quick response to your product support needs. We have several options of support for you to choose from.

For additional information on Support Services as well as other service offerings, please contact your Multi-Tech representative or visit www.multitech.com/support.go.

* Overnight replacement service is currently available for U.S. customers.

World Headquarters

Multi-Tech Systems, Inc.
2205 Woodale Drive
Mounds View, MN 55112 U.S.A.
Tel: 763-785-3500
Toll-Free: 800-328-9717
Email: sales@multitech.com
www.multitech.com

EMEA Headquarters

Multi-Tech Systems (EMEA)
Unit 1, Thames Court
2 Richfield Avenue
Reading, Berkshire RG1 8EQ
United Kingdom
Tel: +(44) 118 959 7774
Email: sales@multitech.co.uk

Produced in the U.S. of U.S. and non-U.S. components. Features and specifications are subject to change without notice.

Trademarks and Registered Trademarks: Multi-Tech and the Multi-Tech logo, MultiModem: Multi-Tech Systems, Inc. All other products and technologies are the trademarks or registered trademarks of their respective holders.

12/13 • 86002093 • © 2013 by Multi-Tech Systems, Inc. All rights reserved.

