



Chipsmall Limited consists of a professional team with an average of over 10 year of expertise in the distribution of electronic components. Based in Hongkong, we have already established firm and mutual-benefit business relationships with customers from,Europe,America and south Asia,supplying obsolete and hard-to-find components to meet their specific needs.

With the principle of "Quality Parts,Customers Priority,Honest Operation,and Considerate Service",our business mainly focus on the distribution of electronic components. Line cards we deal with include Microchip,ALPS,ROHM,Xilinx,Pulse,ON,Everlight and Freescale. Main products comprise IC,Modules,Potentiometer,IC Socket,Relay,Connector.Our parts cover such applications as commercial,industrial, and automotives areas.

We are looking forward to setting up business relationship with you and hope to provide you with the best service and solution. Let us make a better world for our industry!



## Contact us

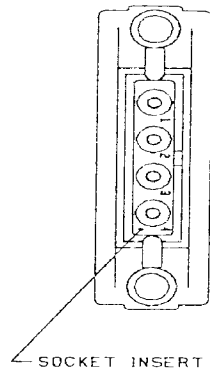
Tel: +86-755-8981 8866 Fax: +86-755-8427 6832

Email & Skype: info@chipsmall.com Web: www.chipsmall.com

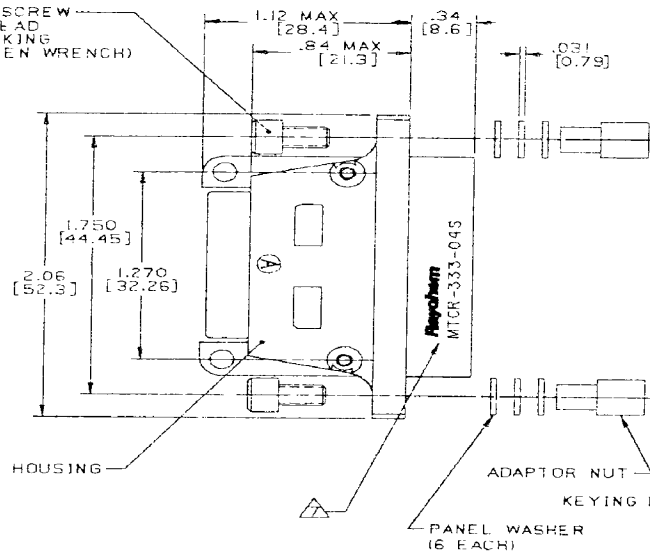
Address: A1208, Overseas Decoration Building, #122 Zhenhua RD., Futian, Shenzhen, China



ADAPTOR SCREW  
SOCKET HEAD  
SELF LOCKING  
17/64 ALLEN WRENCH)



SOCKET INSERT



HOUSING

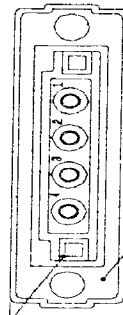
ADAPTOR NUT

KEYING PIN

PANEL WASHER  
(6 EACH)

DUST CAP

KEY PIN INSERT



CASKET  
(CONDUCTIVE)

REVISIONS			
LTR	DESCRIPTION	DATE	APPROVED
A	Revised Per ECNT-18229	6-1-93	[Signature]
B	REVISED PER DCR# T-22913	6/8/99	M.Higgy

NOTES:

- THIS PART IS DESIGNED TO MEET THE REQUIREMENTS OF RAYCHEM SPECIFICATION C-6115. QUALIFICATION IS PENDING.
- MATERIAL: MATERIALS ARE IN ACCORDANCE WITH RAYCHEM SPECIFICATION C-6115.
- FINISH: FINISHES ARE IN ACCORDANCE WITH RAYCHEM SPECIFICATION C-6115.
- FOR MOUNTING / MATING AND KEYING INFORMATION, SEE RAYCHEM DRAWING D652-0012
- THE FOLLOWING MOUNTING AND MATING HARDWARE IS SUPPLIED NOT INSTALLED WITH EACH RECEPTACLE:  
A) (2) KEYING PINS  
B) (2) ADAPTOR SCREWS  
C) (2) ADAPTOR NUTS  
D) (6) PANEL WASHERS
- DUST CAP SUPPLIED INSTALLED WITH EACH RECEPTACLE
- RAYCHEM, PART NO. MTCR-333-045, AND DATE CODE ARE STAMPED APPROXIMATELY AS SHOWN.
- CONNECTOR ACCOMODATES CONTACTS PER TABLE 1.
- INSERT IS PERMANENTLY INSTALLED.
- CONTACTS ARE INSERTED AND REMOVED USING TOOL NUMBER M81969/14-04.
- UNUSED CAVITIES ARE TO BE SEALED USING SEALING PLUG NUMBER MS27488-12.
- TOLERANCES: UNLESS OTHERWISE SPECIFIED  
.XXX ± .005 [±.13]  
.XX ± .02 [±.5]
- WEIGHT: .066 Lbs [ 29.96 Grams ] MAXIMUM.
- REPLACEMENT MOUNTING HARDWARE IS SHOWN ON CHA-0051-003.

SOCKET CONTACT AND TOOLING INFORMATION

CONTACT TYPE	MILITARY PART NO.	WIRE STRIP LENGTH	TERMINATION TOOL
SHIELDED CONTACT FOR COAX CABLE D-602-0107 OR D-602-0095		SEE DRAWING D-602-0107 OR D-602-0095	SEE DRAWING D-602-0107 OR D-602-0095
CONTACT FOR TWISTED PAIR D-602-0105		SEE DRAWING D-602-0105	SEE DRAWING D-602-0105
POWER CONTACT SIZE 12	M39029/5-12-12	1/4" TO 5/16"	M22520/1-01 POSITIONER M22520/1-02

- UNLESS OTHERWISE SPECIFIED

WEIGHT: .066 Lbs [ 29.96 Grams ] MAXIMUM.

If this document is printed it becomes uncontrolled.  
Check with the web for latest revision.

CAD: T22913.TIF  
CONTRACT NO  
F32657-81-C-0067

DRAWN	D.J.K	11-24-86
CHECKED	[Signature]	
APPROVED	[Signature]	11-25-86
APPROVED	[Signature]	12-4-86

UNLESS OTHERWISE SPECIFIED  
DIMENSIONS ARE IN INCHES.  
METRIC DIMENSIONS ARE  
IN PARENTHESES

DO NOT SCALE THIS DRAWING

**Raychem**

RAYCHEM CORPORATION  
300 CONSTITUTION DRIVE  
MENLO PARK, CALIFORNIA 94025

CONNECTOR, RECEPTACLE, FLANGED, 1"  
CADMIUM PLATED, FIXED SOCKET INSERT  
EME CLASS, MTC SERIES

SIZE	CODE IDENT. NO.	DWG. NO.	
A	06090	MTCR-333-045	B
WEIGHT	SHEET 1 OF 1		