



Chipsmall Limited consists of a professional team with an average of over 10 year of expertise in the distribution of electronic components. Based in Hongkong, we have already established firm and mutual-benefit business relationships with customers from,Europe,America and south Asia,supplying obsolete and hard-to-find components to meet their specific needs.

With the principle of “Quality Parts,Customers Priority,Honest Operation,and Considerate Service”,our business mainly focus on the distribution of electronic components. Line cards we deal with include Microchip,ALPS,ROHM,Xilinx,Pulse,ON,Everlight and Freescale. Main products comprise IC,Modules,Potentiometer,IC Socket,Relay,Connector.Our parts cover such applications as commercial,industrial, and automotives areas.

We are looking forward to setting up business relationship with you and hope to provide you with the best service and solution. Let us make a better world for our industry!



## Contact us

Tel: +86-755-8981 8866 Fax: +86-755-8427 6832

Email & Skype: info@chipsmall.com Web: www.chipsmall.com

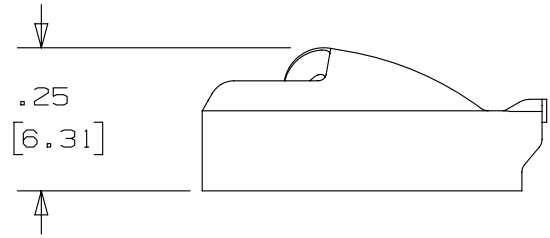
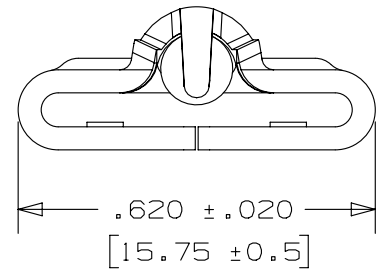
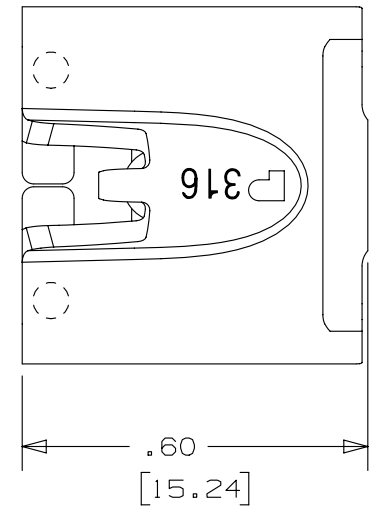
Address: A1208, Overseas Decoration Building, #122 Zhenhua RD., Futian, Shenzhen, China



THIS COPY IS PROVIDED ON A RESTRICTED BASIS AND IS NOT TO BE USED IN ANY WAY DETRIMENTAL TO THE INTERESTS OF PANDUIT CORP.

NOTES:

1. TO BE USED WITH PANDUIT METAL BANDING MBCEH-QR316
2. INSTALLATION TOOLS: RT2HT, ST2MT, PBTMT, RT2HTN
3. BRACKETS [ ] DENOTES DIMENSIONS IN MILLIMETERS
4. MINIMUM LOOP TENSILE STRENGTH: 300 LBS (1335 newtons)
5. TOLERANCES: .X = ±.030 [ .762 ]  
 .XX = ±.020 [ .508 ]  
 .XXX = ±.010 [ .254 ]  
 ANGLES = ±2°
6. MATERIAL: 316 STAINLESS STEEL



REV	DATE	BY	CHK	APR	DESCRIPTION	ECN
02A	4/13	JAMB	MIM	RGRO	UPDATE DRAWING TO NEW GLOBAL PANDUIT TITLE BLOCK WITH PANDUIT LOGO	SSECN01047
01A	7/11	JAMB	MIM	---	REMOVED INSTALLATION TOOL ST3MT. ADDED INSTALLATION TOOL ST2MT, PBTMT, RT2HTN	----
00A	10/08	JAMB	SKB	---	ORIG CAD FILE SPEC WAS S41197_00. NOTE 2: APPLICATION TOOL RT1HT REPLACED BY RT2HT	----
00	9/05	JAMB	EJD	---	DRAWING RELEASED	SS00053

TITLE		METAL LOCKING TIE HEAD - EXTRA HEAVY DUTY - FOR FULLY COATED BANDING PART NUMBER MTHCEH-C316		
		CUSTOMER DRAWING		
ITEM REVISION NAME		N41197BS/02		
DATASET FILE NAME		N41197BS_DC/02A		
UNLESS OTHERWISE SPECIFIED, DIMENSIONAL TOLERANCES ARE: IN [ mm ]		 MATERIAL: SEE NOTES		
.x ± .1 [ 2.54 ]      .xxx ± .005 [ .127 ] .xx ± .01 [ .25 ]      ANGLES ± 5 °				
 THIRD ANGLE PROJECTION		DRAWING NUMBER: N41197BS_DC		
DRAWN BY	DATE	CHK	SCALE	SIZE
JAMB	9/16/05	EJD	3:1	A
SHT 1 OF 1				