



Chipsmall Limited consists of a professional team with an average of over 10 year of expertise in the distribution of electronic components. Based in Hongkong, we have already established firm and mutual-benefit business relationships with customers from,Europe,America and south Asia,supplying obsolete and hard-to-find components to meet their specific needs.

With the principle of "Quality Parts,Customers Priority,Honest Operation,and Considerate Service",our business mainly focus on the distribution of electronic components. Line cards we deal with include Microchip,ALPS,ROHM,Xilinx,Pulse,ON,Everlight and Freescale. Main products comprise IC,Modules,Potentiometer,IC Socket,Relay,Connector.Our parts cover such applications as commercial,industrial, and automotives areas.

We are looking forward to setting up business relationship with you and hope to provide you with the best service and solution. Let us make a better world for our industry!



Contact us

Tel: +86-755-8981 8866 Fax: +86-755-8427 6832

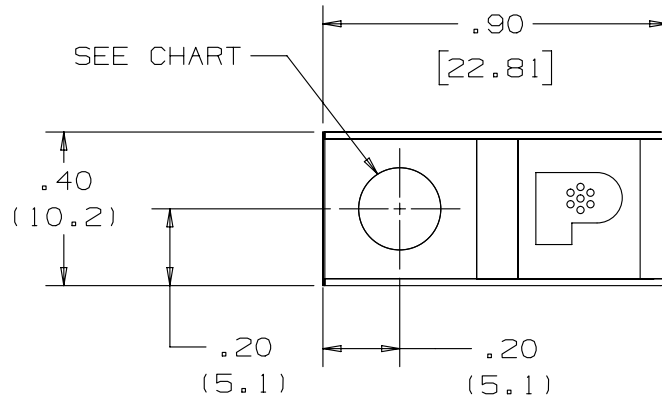
Email & Skype: info@chipsmall.com Web: www.chipsmall.com

Address: A1208, Overseas Decoration Building, #122 Zhenhua RD., Futian, Shenzhen, China



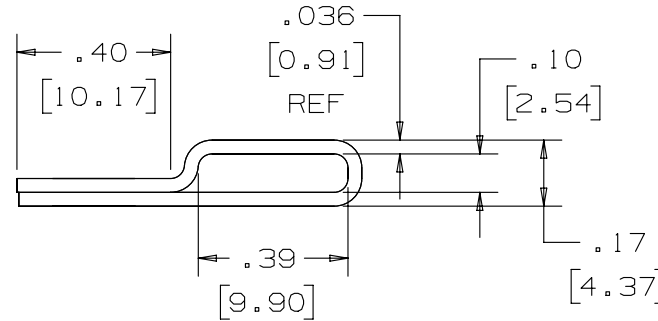
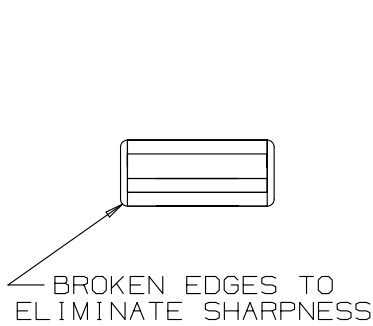
THIS COPY IS PROVIDED ON A RESTRICTED BASIS AND IS NOT TO BE USED IN ANY WAY DETRIMENTAL TO THE INTERESTS OF PANDUIT CORP.

PART NO	CLEARANCE HOLE FOR SCREW	HOLE DIA
MTM1H-C	#8 (4mm)	.176 (4.47mm)
MTM1H10-C	#10 (5mm)	.214 (5.43mm)
MTM1H25-C	#14 (6mm)	.281 (7.14mm)



NOTES:

- DIMENSIONAL TOLERANCES:
 .XX ± .02 (.50)
 .XXX ± .010 (.254)
- USE WITH STD, LIGHT HEAVY, HEAVY MLT'S & 3/8" STRAPPING.
- DIM'S IN () ARE mm.
- PACKAGE C = 100



REV	DATE	BY	CHK	APR	DESCRIPTION	ECN
07A	02/13	JAMB	MIM	RGRO	UPDATE DRAWING TO NEW PANDUIT GLOBAL TITLE BLOCK WITH PANDUIT LOGO	SSECN01031
06A	09/04	JAMB	EJD	----	Ⓒ ADDED "LIGHT-HEAVY" MLT'S TO NOTE 2. Ⓓ CHANGED "AISI NO. 5 EDGE" TO "BROCKEN EDGES"	12052
05	06/04	JAMB	DPN	----	Ⓑ CHANGED PART NO. MTM1H8-C TO MTM1H-C	11723
04	05/04	JAMB	DPN	----	Ⓐ PART NO. CHANGED FROM MTM1H14C TO MTM1H25C	11714
03	05/02	JAMB	DPN	----	MATERIAL WAS 302 S.S.	10042
02	01/01	KMD	JAC	----	ADDED NOTE 4. CAD FILE SPEC WAS NPC-S41042_01	09010
01	5/92	DL	LM	----	ADDED MTM1H10 & MTM1H14	01012

TITLE		METAL TIE MOUNT (1) HOLE		
		CUSTOMER DRAWING		
ITEM REVISION NAME		N41042BS/07		
DATASET FILE NAME		N41042BS_DC/07A		
UNLESS OTHERWISE SPECIFIED, DIMENSIONAL TOLERANCES ARE: IN (mm)		PANDUIT MATERIAL: 304 STAINLESS STEEL		
.x ± .1 [2.54] .xxx ± .005 [.127] .xx ± .01 [.25] ANGLES ± 5°				
		THIRD ANGLE PROJECTION		
DRAWN BY	DATE	CHK	SCALE	DRAWING NUMBER:
SAM	3/25/91	JAC	2:1	N41042BS_DC
				SHT 1 OF 1
				SIZE
				A