



Chipsmall Limited consists of a professional team with an average of over 10 year of expertise in the distribution of electronic components. Based in Hongkong, we have already established firm and mutual-benefit business relationships with customers from,Europe,America and south Asia,supplying obsolete and hard-to-find components to meet their specific needs.

With the principle of “Quality Parts,Customers Priority,Honest Operation,and Considerate Service”,our business mainly focus on the distribution of electronic components. Line cards we deal with include Microchip,ALPS,ROHM,Xilinx,Pulse,ON,Everlight and Freescale. Main products comprise IC,Modules,Potentiometer,IC Socket,Relay,Connector.Our parts cover such applications as commercial,industrial, and automotives areas.

We are looking forward to setting up business relationship with you and hope to provide you with the best service and solution. Let us make a better world for our industry!



Contact us

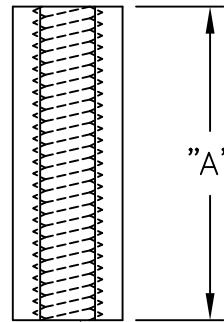
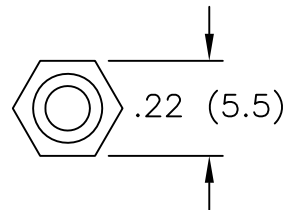
Tel: +86-755-8981 8866 Fax: +86-755-8427 6832

Email & Skype: info@chipsmall.com Web: www.chipsmall.com

Address: A1208, Overseas Decoration Building, #122 Zhenhua RD., Futian, Shenzhen, China



PART NO.	"A"	
MTS-6	.25	(6.35)
MTS-8	.31	(8.0)
MTS-10S	.39	(10.0)
MTS-10	.41	(10.5)
MTS-11	.43	(11.0)
MTS-12	.47	(12.0)
MTS-13	.50	(12.8)
MTS-14	.55	(14.0)
MTS-16	.63	(16.0)
MTS-18	.72	(18.2)
MTS-20	.79	(20.1)
MTS-30	1.18	(30.0)



M3 THREAD

NOTES:

1. MATERIAL: NYLON 6/6 UL94 V-2 (RMS-74).
FLAME RETARDANT NYLON (RMS-146),
AVAILABLE BY SPECIAL ORDER.
TO ORDER ADD "-146" AS SUFFIX.
2. COLOR: NATURAL.

TITLE: METRIC THREADED SPACER				DWG IN IN (MM)			
E	SEE CO 200392 FOR CHANGES	SK 07.22.09	TOLERANCES UNLESS NOTED	FILE # MTS	DWN: P.B.	APP:	FINAL
D	SEE CO 200041 FOR CHANGES	SK 09.28.07	.XX=±.010	MAT'L: SEE NOTES	DT: 07-24-95	DT:	PART #
C	SEE ECN #522 FOR CHANGES	SM 11.14.02	.XXX=±.005	RE: RICHCO, INC.	RICHCO INC.		SEE TABLE
B	CHANGED FILE NUMBER	SM 05.11.01	FRAC=±1/64		PO BOX 804238, CHICAGO, 60680		PRINT TYPE
A	REMOVED RMS-01	SM 02.09.01	ANG=±1'		(773) 539-4060		CA
REV	DESCRIPTION	ENGR DATE					