



Chipsmall Limited consists of a professional team with an average of over 10 year of expertise in the distribution of electronic components. Based in Hongkong, we have already established firm and mutual-benefit business relationships with customers from,Europe,America and south Asia,supplying obsolete and hard-to-find components to meet their specific needs.

With the principle of “Quality Parts,Customers Priority,Honest Operation,and Considerate Service”,our business mainly focus on the distribution of electronic components. Line cards we deal with include Microchip,ALPS,ROHM,Xilinx,Pulse,ON,Everlight and Freescale. Main products comprise IC,Modules,Potentiometer,IC Socket,Relay,Connector.Our parts cover such applications as commercial,industrial, and automotives areas.

We are looking forward to setting up business relationship with you and hope to provide you with the best service and solution. Let us make a better world for our industry!



Contact us

Tel: +86-755-8981 8866 Fax: +86-755-8427 6832

Email & Skype: info@chipsmall.com Web: www.chipsmall.com

Address: A1208, Overseas Decoration Building, #122 Zhenhua RD., Futian, Shenzhen, China



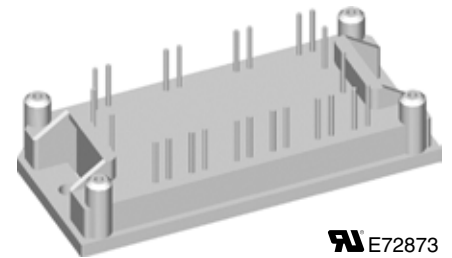
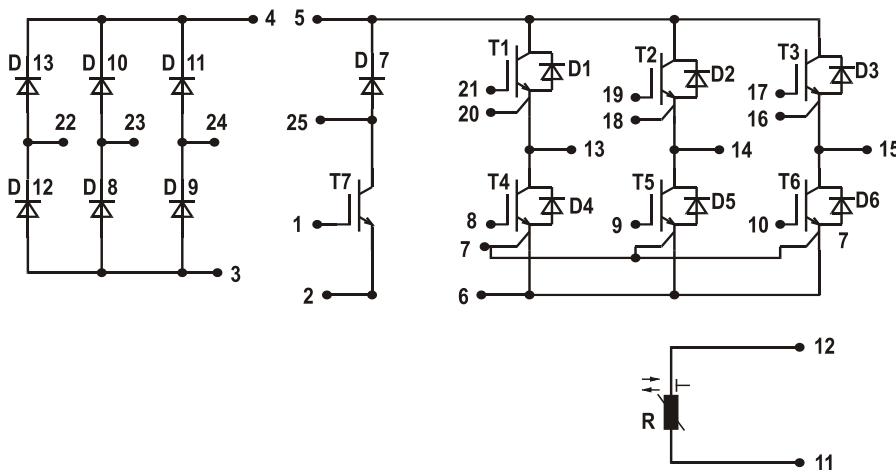
Converter - Brake - Inverter Module (CBI 1) NPT IGBT

| Three Phase Rectifier | Brake Chopper | Three Phase Inverter |
|-----------------------------|-------------------------------|-------------------------------|
| $V_{RRM} = 1600 \text{ V}$ | $V_{CES} = 600 \text{ V}$ | $V_{CES} = 600 \text{ V}$ |
| $I_{DAVM25} = 90 \text{ A}$ | $I_{C25} = 12 \text{ A}$ | $I_{C25} = 52 \text{ A}$ |
| $I_{FSM} = 300 \text{ A}$ | $V_{CE(sat)} = 2.5 \text{ V}$ | $V_{CE(sat)} = 2.5 \text{ V}$ |

Preliminary data

Part name (Marking on product)

MUBW10-06A6K



E72873

Pin configuration see outlines.

Features:

- High level of integration - only one power semiconductor module required for the whole drive
- Inverter with NPT IGBTs
- low saturation voltage
- positive temperature coefficient
- fast switching
- short tail current
- Epitaxial free wheeling diodes with hiperfast and soft reverse recovery
- Industry standard package with insulated copper base plate and soldering pins for PCB mounting
- Temperature sense included

Application:

- AC motor drives with
- Input from single or three phase grid
- Three phase synchronous or asynchronous motor
- Electric braking operation

Package:

- UL registered
- Industry standard E1-pack

Output Inverter T1 - T6

| Symbol | Definitions | Conditions | Ratings | | | Unit |
|---------------------|---------------------------------------|--|--------------------------------|------|------------|---------------------|
| | | | min. | typ. | max. | |
| V_{CES} | collector emitter voltage | $T_{VJ} = 25^{\circ}\text{C to } 150^{\circ}\text{C}$ | | | 600 | V |
| V_{GES} | max. DC gate voltage | continuous | | | ± 20 | V |
| V_{GEM} | max. transient collector gate voltage | transient | | | ± 30 | V |
| I_{C25} | collector current | $T_C = 25^{\circ}\text{C}$ | | | 11 | A |
| I_{C80} | | $T_C = 80^{\circ}\text{C}$ | | | 8 | A |
| P_{tot} | total power dissipation | $T_C = 25^{\circ}\text{C}$ | | | 50 | W |
| $V_{CE(sat)}$ | collector emitter saturation voltage | $I_C = 10\text{ A}; V_{GE} = 15\text{ V}$ | | | 2.7 3.1 | V V |
| $V_{GE(th)}$ | gate emitter threshold voltage | $I_C = 0.2\text{ mA}; V_{GE} = V_{CE}$ | 4.5 | | 6.5 | V |
| I_{CES} | collector emitter leakage current | $V_{CE} = V_{CES}; V_{GE} = 0\text{ V}$ | | | 1.0 | μA mA |
| I_{GES} | gate emitter leakage current | $V_{CE} = 0\text{ V}; V_{GE} = \pm 20\text{ V}$ | | | 120 | nA |
| C_{ies} | input capacitance | $V_{CE} = 25\text{ V}; V_{GE} = 0\text{ V}; f = 1\text{ MHz}$ | | | 220 | pF |
| $Q_{G(on)}$ | total gate charge | $V_{CE} = 300\text{ V}; V_{GE} = 15\text{ V}; I_C = 6\text{ A}$ | | | 32 | nC |
| $t_{d(on)}$ | turn-on delay time | inductive load $V_{CE} = 300\text{ V}; I_C = 6\text{ A}$ $V_{GE} = \pm 15\text{ V}; R_G = 54\ \Omega$ | $T_{VJ} = 125^{\circ}\text{C}$ | | 20 | ns |
| t_r | current rise time | | | | 10 | ns |
| $t_{d(off)}$ | turn-off delay time | | | | 110 | ns |
| t_f | current fall time | | | | 30 | ns |
| E_{on} | turn-on energy per pulse | | | | 0.22 | mJ |
| E_{off} | turn-off energy per pulse | | | | 0.26 | mJ |
| I_{CM} | reverse bias safe operating area | RBSOA; $V_{GE} = \pm 15\text{ V}; R_G = 54\ \Omega$ $L = 100\ \mu\text{H};$ clamped induct. load $V_{CEmax} = V_{CES} - L_S \cdot di/dt$ | $T_{VJ} = 125^{\circ}\text{C}$ | | 18 | A |
| t_{SC} (SCSOA) | short circuit safe operating area | $V_{CE} = 600\text{ V}; V_{GE} = \pm 15\text{ V};$ $R_G = 54\ \Omega;$ non-repetitive | $T_{VJ} = 125^{\circ}\text{C}$ | | 10 | μs |
| R_{thJC} | thermal resistance junction to case | (per IGBT) | | | 2.75 | K/W |
| R_{thCH} | thermal resistance case to heatsink | (per IGBT) | | | 0.95 | K/W |

Output Inverter D1 - D6

| Symbol | Definitions | Conditions | Ratings | | | Unit |
|----------------|-------------------------------------|---|--------------------------------|------|------------|---------------|
| | | | min. | typ. | max. | |
| V_{RRM} | max. repetitive reverse voltage | $T_{VJ} = 150^{\circ}\text{C}$ | | | 600 | V |
| I_{F25} | forward current | $T_C = 25^{\circ}\text{C}$ | | | 21 | A |
| I_{F80} | | $T_C = 80^{\circ}\text{C}$ | | | 14 | A |
| V_F | forward voltage | $I_F = 10\text{ A}; V_{GE} = 0\text{ V}$ | | | 2.2 1.6 | V V |
| I_{RM} | max. reverse recovery current | $V_R = 100\text{ V}$ $di_f/dt = -100\text{ A}/\mu\text{s}$ $I_F = 12\text{ A}; V_{GE} = 0\text{ V}$ | $T_{VJ} = 100^{\circ}\text{C}$ | | 4.4 | A |
| t_{rr} | reverse recovery time | | | | 80 | ns |
| $E_{rec(off)}$ | reverse recovery energy | | | | tdb | μJ |
| R_{thJC} | thermal resistance junction to case | (per diode) | | | 2.5 | K/W |
| R_{thCH} | thermal resistance case to heatsink | (per diode) | | | 0.85 | K/W |

 $T_C = 25^{\circ}\text{C}$ unless otherwise stated

Brake Chopper T7

| Symbol | Definitions | Conditions | Ratings | | | Unit | |
|---------------------|---------------------------------------|--|---|------|----------|-----------------|---------------|
| | | | min. | typ. | max. | | |
| V_{CES} | collector emitter voltage | | $T_{VJ} = 25^{\circ}\text{C to } 150^{\circ}\text{C}$ | | | V | |
| V_{GES} | max. DC gate voltage | continuous | | | ± 20 | V | |
| V_{GEM} | max. transient collector gate voltage | transient | | | ± 30 | V | |
| I_{C25} | collector current | | $T_C = 25^{\circ}\text{C}$ | | | A | |
| I_{C80} | | | $T_C = 80^{\circ}\text{C}$ | | | A | |
| P_{tot} | total power dissipation | | $T_C = 25^{\circ}\text{C}$ | | | W | |
| $V_{CE(sat)}$ | collector emitter saturation voltage | $I_C = 10\text{ A}; V_{GE} = 15\text{ V}$ | $T_{VJ} = 25^{\circ}\text{C}$ $T_{VJ} = 125^{\circ}\text{C}$ | | | V V | |
| $V_{GE(th)}$ | gate emitter threshold voltage | $I_C = 0.2\text{ mA}; V_{GE} = V_{CE}$ | 4.5 | | 6.5 | V | |
| I_{CES} | collector emitter leakage current | $V_{CE} = V_{CES}; V_{GE} = 0\text{ V}$ | $T_{VJ} = 25^{\circ}\text{C}$ $T_{VJ} = 125^{\circ}\text{C}$ | | | 0.7 mA mA | |
| I_{GES} | gate emitter leakage current | $V_{CE} = 0\text{ V}; V_{GE} = \pm 20\text{ V}$ | | | 120 | nA | |
| C_{ies} | input capacitance | $V_{CE} = 25\text{ V}; V_{GE} = 0\text{ V}; f = 1\text{ MHz}$ | | 220 | | pF | |
| $Q_{G(on)}$ | total gate charge | $V_{CE} = 300\text{ V}; V_{GE} = 15\text{ V}; I_C = 6\text{ A}$ | | 32 | | nC | |
| $t_{d(on)}$ | turn-on delay time | inductive load $V_{CE} = 300\text{ V}; I_C = 6\text{ A}$ $V_{GE} = \pm 15\text{ V}; R_G = 54\ \Omega$ | $T_{VJ} = 125^{\circ}\text{C}$ | | | 20 | ns |
| t_r | current rise time | | 10 | ns | | | |
| $t_{d(off)}$ | turn-off delay time | | 110 | ns | | | |
| t_f | current fall time | | 30 | ns | | | |
| E_{on} | turn-on energy per pulse | | 0.21 | mJ | | | |
| E_{off} | turn-off energy per pulse | | 0.26 | mJ | | | |
| I_{CM} | reverse bias safe operating area | RBSOA; $V_{GE} = \pm 15\text{ V}; R_G = 54\ \Omega$ $L = 100\ \mu\text{H};$ clamped induct. load $V_{CEmax} = V_{CES} - L_S \cdot di/dt$ | $T_{VJ} = 125^{\circ}\text{C}$ | | | 18 | A |
| t_{SC} (SCSOA) | short circuit safe operating area | $V_{CE} = 600\text{ V}; V_{GE} = \pm 15\text{ V};$ $R_G = 54\ \Omega;$ non-repetitive | $T_{VJ} = 125^{\circ}\text{C}$ | | | 10 | μs |
| R_{thJC} | thermal resistance junction to case | (per IGBT) | | | 2.75 | K/W | |
| R_{thCH} | thermal resistance case to heatsink | (per IGBT) | | 0.9 | | K/W | |

Brake Chopper D7

| Symbol | Definitions | Conditions | Ratings | | | Unit | |
|------------|-------------------------------------|--|---|------|------|------|------------------|
| | | | min. | typ. | max. | | |
| V_{RRM} | max. repetitive reverse voltage | | $T_{VJ} = 150^{\circ}\text{C}$ | | | 600 | V |
| I_{F25} | forward current | | $T_C = 25^{\circ}\text{C}$ | | | 21 | A |
| I_{F80} | | | $T_C = 80^{\circ}\text{C}$ | | | 14 | A |
| V_F | forward voltage | $I_F = 10\text{ A}; V_{GE} = 0\text{ V}$ | $T_{VJ} = 25^{\circ}\text{C}$ $T_{VJ} = 125^{\circ}\text{C}$ | | | 1.25 | 2.1 V V |
| I_R | reverse current | $V_R = V_{RRM}$ | $T_{VJ} = 25^{\circ}\text{C}$ $T_{VJ} = 125^{\circ}\text{C}$ | | | 0.2 | 0.06 mA mA |
| I_{RM} | max. reverse recovery current | $V_R = 100\text{ V}; I_F = 12\text{ A}$ $di_F/dt = -100\text{ A}/\mu\text{s}$ | $T_{VJ} = 100^{\circ}\text{C}$ | | | 3.5 | A |
| t_{rr} | reverse recovery time | | 80 | ns | | | |
| R_{thJC} | thermal resistance junction to case | (per diode) | | | 2.5 | K/W | |
| R_{thCH} | thermal resistance case to heatsink | (per diode) | | 0.85 | | K/W | |

 $T_C = 25^{\circ}\text{C}$ unless otherwise stated

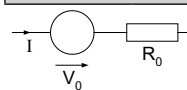
| Input Rectifier Bridge D8 - D13 | | | | | |
|---------------------------------|--|---------------------------------|--------------------------|------|---|
| Symbol | Definitions | Conditions | Maximum Ratings | | |
| V_{RRM} | <i>max. repetitive reverse voltage</i> | | | 1600 | V |
| I_{FAV} | <i>average forward current</i> | sine 180° | $T_C = 80^\circ\text{C}$ | 22 | A |
| I_{DAVM} | <i>max. average DC output current</i> | rectangular; $d = 1/3$; bridge | $T_C = 80^\circ\text{C}$ | 61 | A |
| I_{FSM} | <i>max. surge forward current</i> | $t = 10\text{ ms}$; sine 50 Hz | $T_C = 25^\circ\text{C}$ | 300 | A |
| P_{tot} | <i>total power dissipation</i> | | $T_C = 25^\circ\text{C}$ | 50 | W |

| Symbol | Conditions | Characteristic Values | | | | |
|------------|--|-----------------------|------------------------------|------|------|-----|
| | | min. | typ. | max. | | |
| V_F | <i>forward voltage</i> | $I_F = 30\text{ A}$ | $T_{VJ} = 25^\circ\text{C}$ | 1.1 | 1.45 | V |
| | | | $T_{VJ} = 125^\circ\text{C}$ | 1.2 | | V |
| I_R | <i>reverse current</i> | $V_R = V_{RRM}$ | $T_{VJ} = 25^\circ\text{C}$ | 0.3 | 0.01 | mA |
| | | | $T_{VJ} = 125^\circ\text{C}$ | | | mA |
| R_{thJC} | <i>thermal resistance junction to case</i> | (per diode) | $T_{VJ} = 25^\circ\text{C}$ | | 2.1 | K/W |
| R_{thCH} | <i>thermal resistance case to heatsink</i> | (per diode) | | 0.7 | | K/W |

| Temperature Sensor NTC | | | | | | | |
|------------------------|-------------------|------------|--------------------------|------|------|------|------------|
| Symbol | Definitions | Conditions | Ratings | | | Unit | |
| | | | min. | typ. | max. | | |
| R_{25} | <i>resistance</i> | | $T_C = 25^\circ\text{C}$ | 4.45 | 4.7 | 5.0 | k Ω |
| $B_{25/85}$ | | | | | 3510 | | K |

| Module | | | | | | |
|---------------|--|--|---------|------|------|------------------|
| Symbol | Definitions | Conditions | Ratings | | | Unit |
| | | | min. | typ. | max. | |
| T_{VJ} | <i>operating temperature</i> | | -40 | | 150 | $^\circ\text{C}$ |
| T_{VJM} | <i>max. virtual junction temperature</i> | | | | 150 | $^\circ\text{C}$ |
| T_{stg} | <i>storage temperature</i> | | -40 | | 125 | $^\circ\text{C}$ |
| V_{ISOL} | <i>isolation voltage</i> | $I_{ISOL} \leq 1\text{ mA}$; 50/60 Hz | | | 2500 | V~ |
| M_d | <i>mounting torque</i> | (M4) | 2.0 | | 2.2 | Nm |
| d_S | <i>creep distance on surface</i> | | 12.7 | | | mm |
| d_A | <i>strike distance through air</i> | | 9.6 | | | mm |
| Weight | | | | 40 | | g |

Equivalent Circuits for Simulation

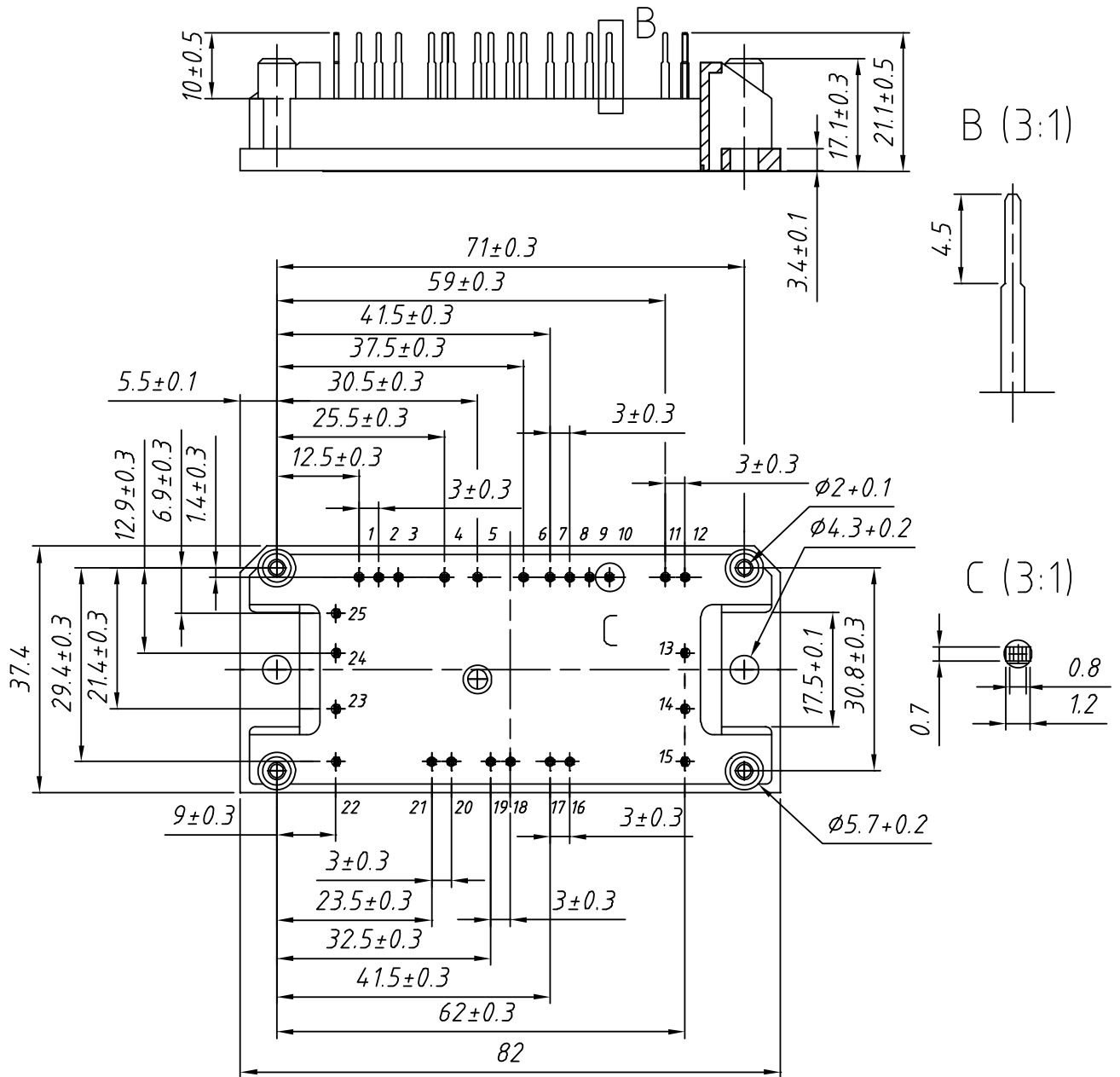


| Symbol | Definitions | Conditions | Ratings | | | Unit |
|--------|----------------------------|------------|------------------------------|------|------|------------|
| | | | min. | typ. | max. | |
| V_0 | <i>rectifier diode</i> | D8 - D13 | $T_{VJ} = 125^\circ\text{C}$ | 0.90 | | V |
| R_0 | | | | 12 | | m Ω |
| V_0 | <i>IGBT</i> | T1 - T6 | $T_{VJ} = 125^\circ\text{C}$ | 1.4 | | V |
| R_0 | | | | 150 | | m Ω |
| V_0 | <i>free wheeling diode</i> | D1 - D6 | $T_{VJ} = 125^\circ\text{C}$ | 1.25 | | V |
| R_0 | | | | 26 | | m Ω |
| V_0 | <i>IGBT</i> | T7 | $T_{VJ} = 125^\circ\text{C}$ | 1.4 | | V |
| R_0 | | | | 150 | | m Ω |
| V_0 | <i>free wheeling diode</i> | D7 | $T_{VJ} = 125^\circ\text{C}$ | 1.25 | | V |
| R_0 | | | | 26 | | m Ω |

$T_C = 25^\circ\text{C}$ unless otherwise stated

Outline Drawing

Dimensions in mm (1 mm = 0.0394")



Product Marking

| Ordering | Part Name | Marking on Product | Delivering Mode | Base Qty | Ordering Code |
|----------|---------------|--------------------|-----------------|----------|---------------|
| Standard | MUBW 10-06A6K | MUBW10-06A6K | Box | 10 | 500 087 |