



Chipsmall Limited consists of a professional team with an average of over 10 year of expertise in the distribution of electronic components. Based in Hongkong, we have already established firm and mutual-benefit business relationships with customers from,Europe,America and south Asia,supplying obsolete and hard-to-find components to meet their specific needs.

With the principle of “Quality Parts,Customers Priority,Honest Operation,and Considerate Service”,our business mainly focus on the distribution of electronic components. Line cards we deal with include Microchip,ALPS,ROHM,Xilinx,Pulse,ON,Everlight and Freescale. Main products comprise IC,Modules,Potentiometer,IC Socket,Relay,Connector.Our parts cover such applications as commercial,industrial, and automotives areas.

We are looking forward to setting up business relationship with you and hope to provide you with the best service and solution. Let us make a better world for our industry!



Contact us

Tel: +86-755-8981 8866 Fax: +86-755-8427 6832

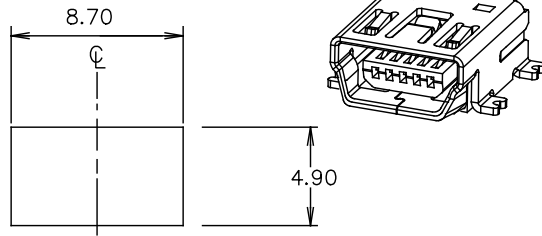
Email & Skype: info@chipsmall.com Web: www.chipsmall.com

Address: A1208, Overseas Decoration Building, #122 Zhenhua RD., Futian, Shenzhen, China



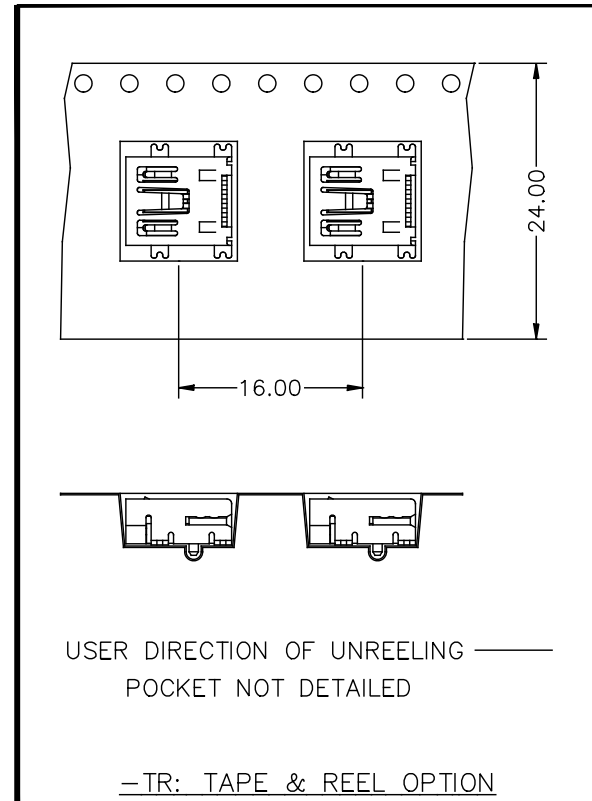
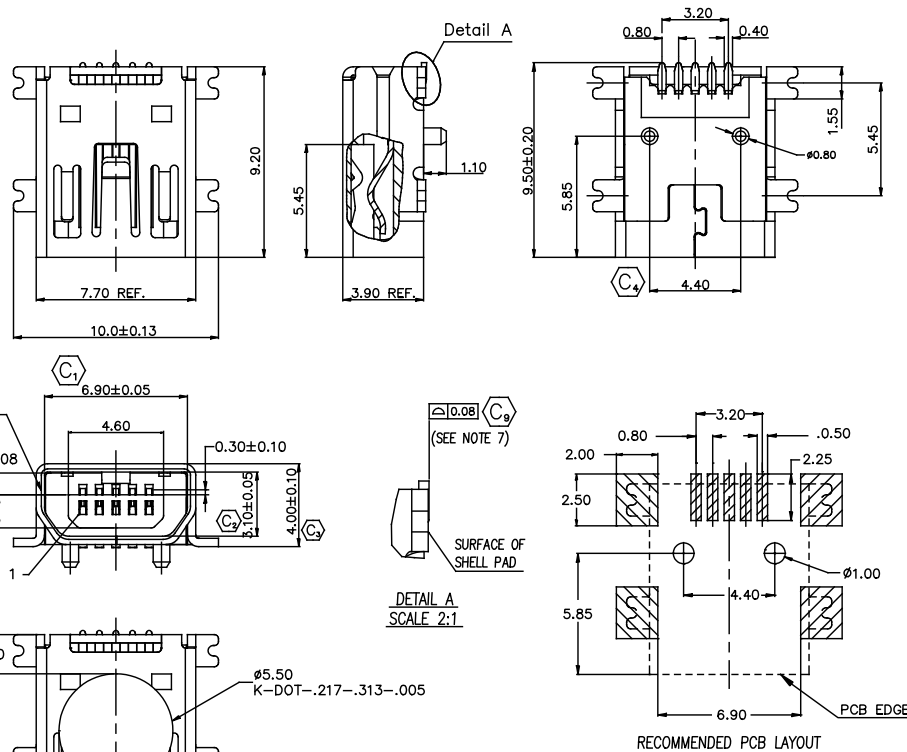
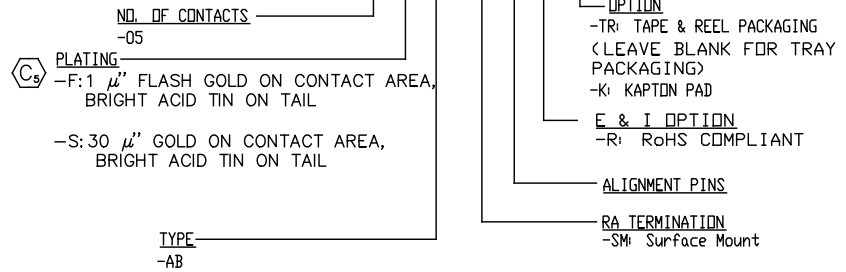
REVISION V

DO NOT SCALE
FORM THIS PRINT



SUGGESTED PANEL CUTOUT DIMENSIONS

MUSB-05-X-AB-SM-A-X-XX



- NOTES:
1. C REPRESENTS CRITICAL DIMENSION.
 2. NOTE DELETED.
 3. NOTE DELETED.
 4. CONFIRM THAT PARTS FACE MATCH THIS PRINT.
 5. ALL PARTS RoHS COMPLIANT AS OF REVISION K.
 6. PARTS TO BE PACKAGED LEADS DOWN IN TRAYS.
 7. COPLANARITY MEASUREMENT SHOULD INCLUDE ALL USB TAILS AND SHELL TABS.

KAPTON PAD PLACEMENT

<p>UNLESS OTHERWISE SPECIFIED, DIMENSIONS ARE IN MM. TOLERANCES ARE:</p> <p>DECIMALS ANGLES</p> <p>.X: ±.25 2°</p> <p>.XX: ±.13</p> <p>.XXX: ±.05</p>	<p>PROPRIETARY NOTE</p> <p>THIS DOCUMENT CONTAINS INFORMATION CONFIDENTIAL AND PROPRIETARY TO SAMTEC INC. AND SHALL NOT BE REPRODUCED OR TRANSFERRED TO OTHER DOCUMENTS OR DISCLOSED TO OTHERS OR USED FOR ANY PURPOSE OTHER THAN THAT FOR WHICH IT WAS OBTAINED WITHOUT THE EXPRESSED WRITTEN CONSENT OF SAMTEC INC.</p>	<p>samtec</p> <p>520 PARK EAST BLVD. NEW ALBANY, IN 47150 (812) 944-6733 P.O. BOX 1147 TWX: 810-540-4085</p>
<p>DO NOT SCALE DRAWING</p> <p>INSULATOR: PA6T, RATED UL 94V-0, BLACK</p> <p>CONTACT: PHOS BRONZE</p> <p>SHELL: CU/NI PLATED BRASS</p> <p>MAX FLASH ALLOWED: .051</p> <p>MAX GATE VESTIGE: .051</p> <p>F:\DWG\EXISP\ASSEMBLY\0\USB</p>	<p>SHEET SCALE: 1:2</p>	<p>DESCRIPTION: Mini USB, RA, 5 Pin, Type AB, Single, SMT</p> <p>DWG. NO. MUSB-05-X-AB-SM-A-X-XX</p> <p>BY: J.RILEY 03/23/04 SHEET 1 OF 1</p>

CODE: 55322