



Chipsmall Limited consists of a professional team with an average of over 10 year of expertise in the distribution of electronic components. Based in Hongkong, we have already established firm and mutual-benefit business relationships with customers from,Europe,America and south Asia,supplying obsolete and hard-to-find components to meet their specific needs.

With the principle of “Quality Parts,Customers Priority,Honest Operation,and Considerate Service”,our business mainly focus on the distribution of electronic components. Line cards we deal with include Microchip,ALPS,ROHM,Xilinx,Pulse,ON,Everlight and Freescale. Main products comprise IC,Modules,Potentiometer,IC Socket,Relay,Connector.Our parts cover such applications as commercial,industrial, and automotives areas.

We are looking forward to setting up business relationship with you and hope to provide you with the best service and solution. Let us make a better world for our industry!



Contact us

Tel: +86-755-8981 8866 Fax: +86-755-8427 6832

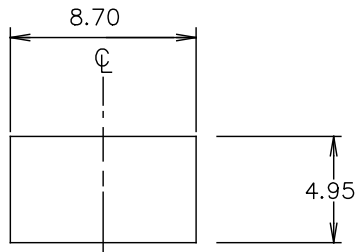
Email & Skype: info@chipsmall.com Web: www.chipsmall.com

Address: A1208, Overseas Decoration Building, #122 Zhenhua RD., Futian, Shenzhen, China

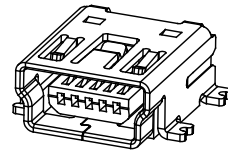


REVISION Z

DO NOT SCALE FROM THIS PRINT

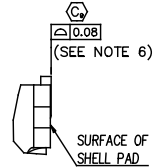
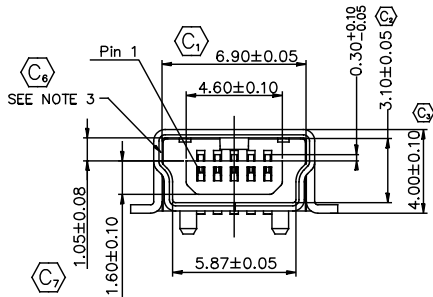
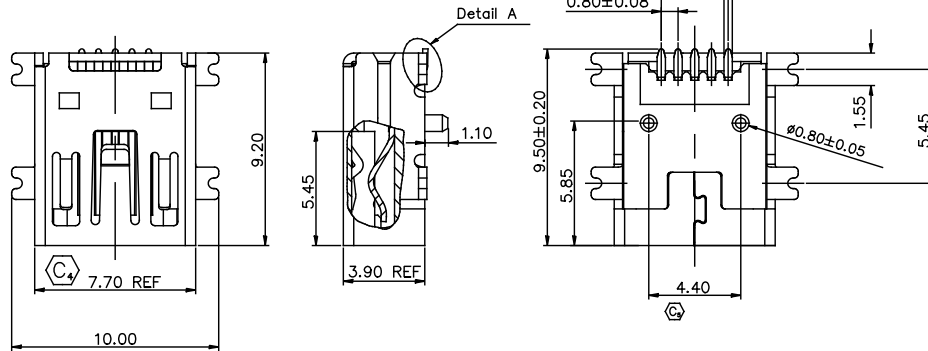


SUGGESTED PANEL CUTOUT DIMENSIONS

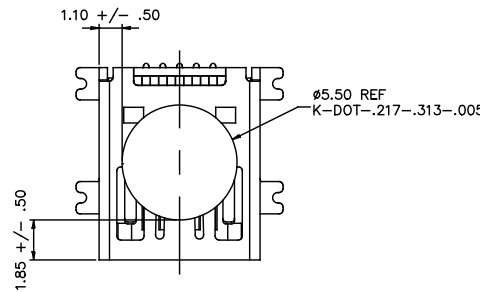


MUSB-05-X-B-SM-A-X-XX

- NO. OF CONTACTS _____
- 05 _____
- PLATING _____
 - F: 1 μ" FLASH GOLD ON CONTACT AREA, BRIGHT ACID TIN ON TAIL
 - S: 30 μ" SELECTIVE GOLD ON CONTACT AREA, BRIGHT ACID TIN ON TAIL
- OPTION _____
 - TR: TAPE & REEL PACKAGING (LEAVE BLANK FOR TRAY PACKAGING)
 - K: KAPTON PAD
- E & I OPTION _____
 - R: RoHS COMPLIANT
- ALIGNMENT PINS _____
- RA TERMINATION _____
 - SM: SURFACE MOUNT
- TYPE _____
 - B



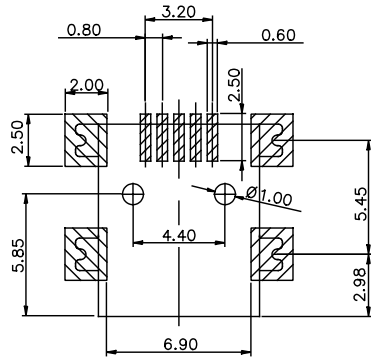
DETAIL A
SCALE 2:1



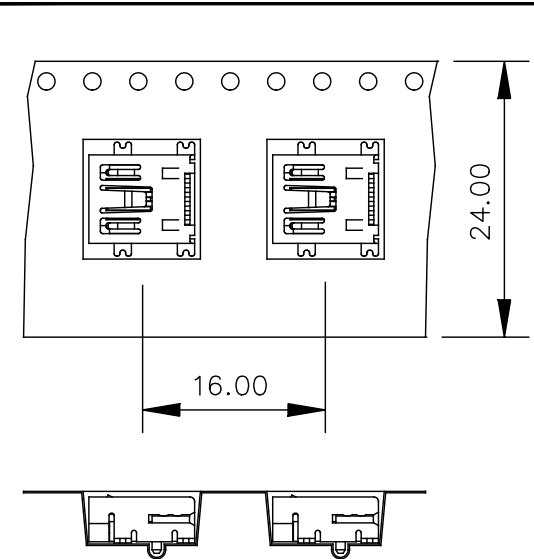
PAD PLACEMENT

NOTES:

1. C REPRESENTS CRITICAL DIMENSION.
2. NOTE DELETED.
3. CONFIRM THAT PARTS FACE MATCH THIS PRINT.
4. ALL PARTS RoHS COMPLIANT AS OF REVISION M.
5. PARTS TO BE PACKAGED LEADS DOWN IN TRAYS.
6. COPLANARITY MEASUREMENT SHOULD INCLUDED ALL USB TAILS AND SHELL TABS.



RECOMMENDED PCB LAYOUT



USER DIRECTION OF UNREELING →
POCKET NOT DETAILED

-TR: TAPE & REEL OPTION

UNLESS OTHERWISE SPECIFIED, DIMENSIONS ARE IN MILLIMETERS TOLERANCES ARE:
DECIMALS .X: ±.25 .XX: ±.13 .XXX: ±.05
ANGLES 3°

PROPRIETARY NOTE
THIS DOCUMENT CONTAINS CONFIDENTIAL AND PROPRIETARY INFORMATION AND ALL DESIGN, MANUFACTURING, REPRODUCTION, USE, PATENT RIGHTS AND SALES RIGHTS ARE EXPRESSLY RESERVED BY SAMTEC, INC. THIS DOCUMENT SHALL NOT BE DISCLOSED, IN WHOLE OR PART, TO ANY UNAUTHORIZED PERSON OR ENTITY NOR REPRODUCED, TRANSFERRED OR INCORPORATED IN ANY OTHER PROJECT IN ANY MANNER WITHOUT THE EXPRESS WRITTEN CONSENT OF SAMTEC, INC.

DO NOT SCALE DRAWING
INSULATOR: LCP, RATED UL 94V-0, BLACK
CONTACT: COPPER ALLOY
SHELL: COPPER ALLOY

SHEET SCALE: 1:2

MAX FLASH ALLOWED: .051
MAX GATE VESTIGE: .051
F:\DWG\EXISPROD\ASSEMBLY\N\USB

DESCRIPTION:
Mini USB, RA, 5 Pin, Type B, Single, SMT

DWG. NO.
MUSB-05-X-B-SM-A-X-XX

BY: J. WOOL 12/26/03 SHEET 1 OF 1

samtec

520 PARK EAST BLVD. NEW ALBANY, IN 47150
(812) 944-6733 P.O. BOX 1147 TWX: 810-540-4085

CODE: 55322