



Chipsmall Limited consists of a professional team with an average of over 10 year of expertise in the distribution of electronic components. Based in Hongkong, we have already established firm and mutual-benefit business relationships with customers from,Europe,America and south Asia,supplying obsolete and hard-to-find components to meet their specific needs.

With the principle of "Quality Parts,Customers Priority,Honest Operation,and Considerate Service",our business mainly focus on the distribution of electronic components. Line cards we deal with include Microchip,ALPS,ROHM,Xilinx,Pulse,ON,Everlight and Freescale. Main products comprise IC,Modules,Potentiometer,IC Socket,Relay,Connector.Our parts cover such applications as commercial,industrial, and automotives areas.

We are looking forward to setting up business relationship with you and hope to provide you with the best service and solution. Let us make a better world for our industry!



Contact us

Tel: +86-755-8981 8866 Fax: +86-755-8427 6832

Email & Skype: info@chipsmall.com Web: www.chipsmall.com

Address: A1208, Overseas Decoration Building, #122 Zhenhua RD., Futian, Shenzhen, China



N-2X

Electrical Specifications (@25°C)

1. Maximum Power: 100 VA
2. Input Voltage: 230 V, 50 / 60 Hz
3. Output Voltage 115V, $\pm 5\%$
4. Full Secondary Load 0.87 Amps RMS
5. Temperature Rise: 60C TYP (85C MAX allowed)
from 25° C, Ambient

Construction:

Single winding on a double wall, nylon bobbin. This chassis mount design comes in a channel frame with .187" diameter holes in the mounting ears. Three leads exit the transformer, the black lead is the tap.

Description:

Secondary coil is a fraction of the entire winding for voltage step-down. This causes part of the power to be transferred conductively through the windings, rather than all of the power being transferred by induction.

Safety:

These units are designed with 1500V isolation between the winding and the core. Materials and construction are rated for Class B insulation system.
UL: File E50476, UL 1446, Electrical Insulation System



E50476

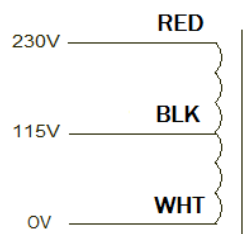
A. Dimensions: Unit: In inches

H	W	D	MW
2.70 Max	4.0 Max	2.05 Max	3.562 \pm 0.030

Weight : 2.1 lbs

Connections: 7 \pm 1" leads, 0.250 \pm 0.062" Stripped & Tin

Schematic:



For 230V input: Wht to Red

For 115 output: Wht to BLK

RoHS Compliance: As of manufacturing date February 2005, all standard products meet the requirements of 2011/65/EU, known as the RoHS initiative.

* Upon printing, this document is considered "uncontrolled". Please contact Triad Magnetics' website for the most current version.

