



Chipsmall Limited consists of a professional team with an average of over 10 year of expertise in the distribution of electronic components. Based in Hongkong, we have already established firm and mutual-benefit business relationships with customers from,Europe,America and south Asia,supplying obsolete and hard-to-find components to meet their specific needs.

With the principle of “Quality Parts,Customers Priority,Honest Operation,and Considerate Service”,our business mainly focus on the distribution of electronic components. Line cards we deal with include Microchip,ALPS,ROHM,Xilinx,Pulse,ON,Everlight and Freescale. Main products comprise IC,Modules,Potentiometer,IC Socket,Relay,Connector.Our parts cover such applications as commercial,industrial, and automotives areas.

We are looking forward to setting up business relationship with you and hope to provide you with the best service and solution. Let us make a better world for our industry!



Contact us

Tel: +86-755-8981 8866 Fax: +86-755-8427 6832

Email & Skype: info@chipsmall.com Web: www.chipsmall.com

Address: A1208, Overseas Decoration Building, #122 Zhenhua RD., Futian, Shenzhen, China



Type 1 Mild Steel 3 Piece Flushmount Enclosure *N1WF*

Series

Hinge Door with Quarter Turn



Application

- Designed for indoor use to enclose controls, instruments, and components which do not require oil-tight or dust-tight protection.
- Ideal for applications where components may be easily mounted and wired prior to installation of wrapper and door.

Standards

- UL 50 Type 1
- CSA Type 1
- Complies with
 - NEMA Type 1
 - IEC 60529, IP20

Construction

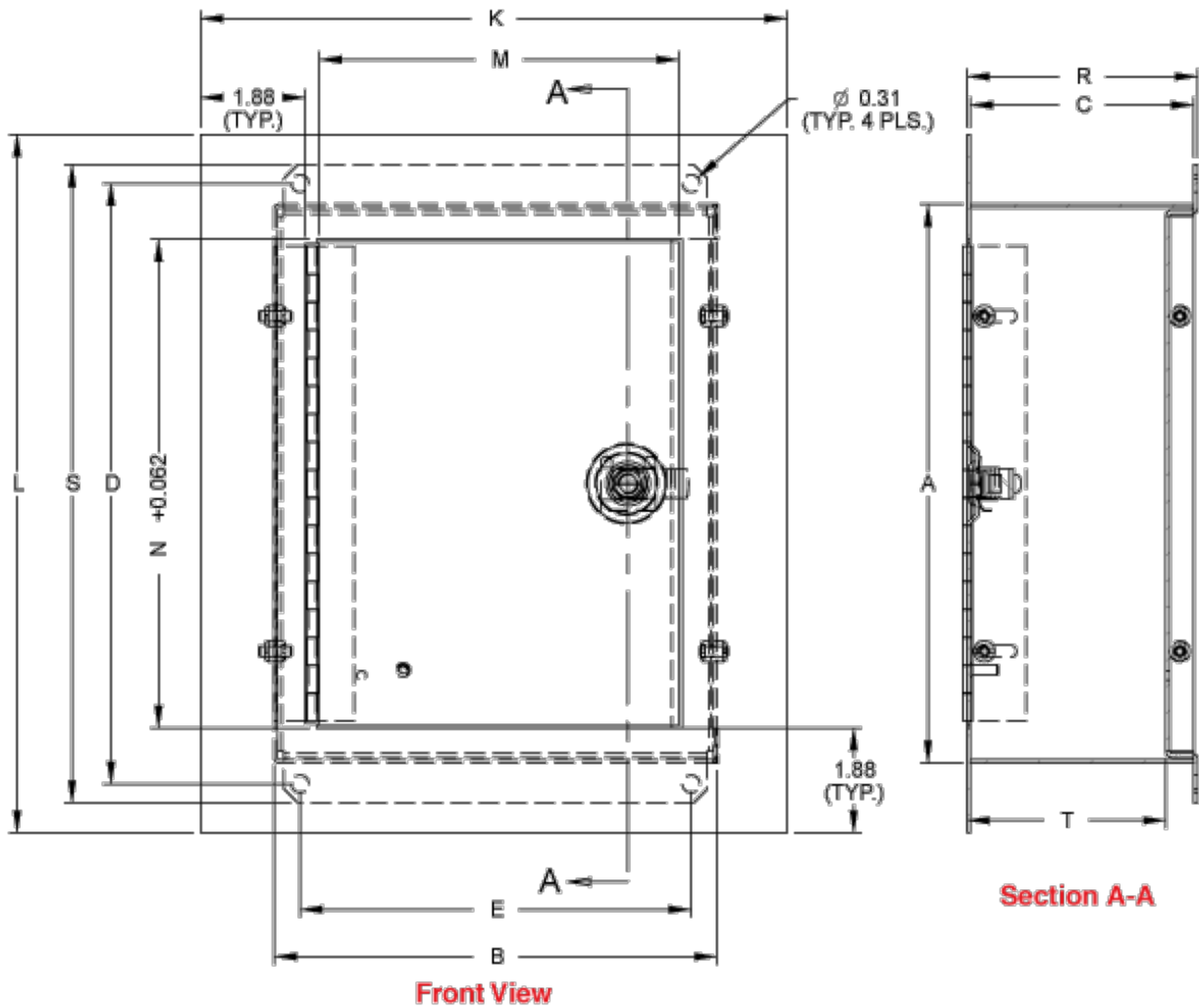
- Three piece assembly consisting of a base, wrapper, and door.
- Components are attached and secured with metal screws.
- 14 gauge reverse formed base provides clearance for mounting hardware.
- Punched for left or right hinging of the door and ease of assembly.
- Wrapper is formed from 16 gauge steel, with no knock-outs in the sides.
- Flush mounting door assembly formed from 16 gauge steel.
- Door is fastened with a slotted quarter turn latch.
- A bonding stud is provided on the door and a grounding screw is provided for the enclosure.

Finish

- Base, wrapper and door are finished in ANSI 61 gray powder coating.

Accessories

- Type 1 Lock Kit
- Padlock Adaptor



Part No.	Wrapper Size		Mounting Centers			Door		Overall Dimensions			Base		Ship Wt. Lbs
	A	B	C	D	E	M	N	K	R1	L	S	T1	
N1WF864	8.00	6.00	4.00	8.75	5.00	4.46	6.68	8.50	4.13 - 4.6	10.50	9.50	3.5 - 3.9	6
N1WF1084	10.00	8.00	4.00	10.75	7.00	6.46	8.68	10.50	4.13 - 4.6	12.50	11.50	3.5 - 3.9	8
N1WF12104	12.00	10.00	4.00	12.75	9.00	8.46	10.68	12.50	4.13 - 4.6	14.50	13.50	3.5 - 3.9	11
N1WF16124	16.00	12.00	4.00	16.75	11.00	10.46	14.68	14.50	4.13 - 4.6	18.50	17.50	3.5 - 3.9	15
N1WF20164	20.00	16.00	4.00	20.75	15.00	14.46	18.68	18.50	4.13 - 4.6	22.50	21.50	3.5 - 3.9	22
N1WF24204	24.00	20.00	4.00	24.75	19.00	18.46	22.68	22.50	4.13 - 4.6	26.50	25.50	3.5 - 3.9	30

Data subject to change without notice