



Chipsmall Limited consists of a professional team with an average of over 10 year of expertise in the distribution of electronic components. Based in Hongkong, we have already established firm and mutual-benefit business relationships with customers from,Europe,America and south Asia,supplying obsolete and hard-to-find components to meet their specific needs.

With the principle of “Quality Parts,Customers Priority,Honest Operation,and Considerate Service”,our business mainly focus on the distribution of electronic components. Line cards we deal with include Microchip,ALPS,ROHM,Xilinx,Pulse,ON,Everlight and Freescale. Main products comprise IC,Modules,Potentiometer,IC Socket,Relay,Connector.Our parts cover such applications as commercial,industrial, and automotives areas.

We are looking forward to setting up business relationship with you and hope to provide you with the best service and solution. Let us make a better world for our industry!



Contact us

Tel: +86-755-8981 8866 Fax: +86-755-8427 6832

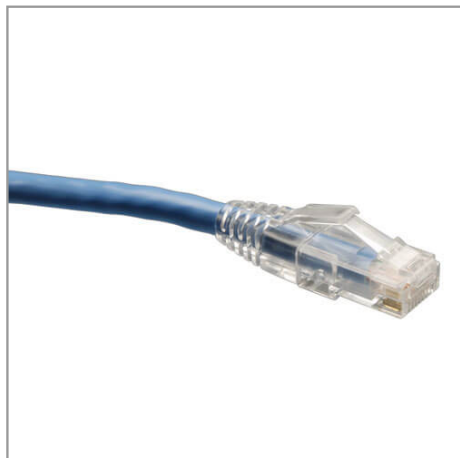
Email & Skype: info@chipsmall.com Web: www.chipsmall.com

Address: A1208, Overseas Decoration Building, #122 Zhenhua RD., Futian, Shenzhen, China



Cat6 Gigabit Solid Conductor Snagless Patch Cable (RJ45 M/M) - Blue, 150-ft.

MODEL NUMBER: **N202-150-BL**



Description

Tripp Lite Solid Conductor 4-pair Cat6 patch cables are ideal for long Ethernet patch cable runs, as well as for use with Tripp Lite's HDMI over Cat6 Audio/Video products. Solid conductor wire has a lower DC resistance, allowing signals to run farther and stronger than stranded conductor patch cables. Unique, snagless boot protects the RJ45 locking tab during cable pulls, yet easily disconnects from attached equipment.

Features

- 150ft Blue Cat6 Solid Conductor patch cable
- Meets Category 6 cabling standards
- Solid Conductor 4 Pair Cable for long distance patch runs
- Drastically reduce impedance and structural return loss compared to Stranded Conductor patch cables
- High-quality copper wire and a shortened body plug design
- Snagless boots protect the locking tabs on the RJ45 connectors from being damaged during installation

Specifications

OVERVIEW	
UPC Code	037332157362
Technology	Cat6
INPUT	
Cable Length (ft.)	150

Highlights

- Meets Category 6 cabling standards
- Solid Conductor 4 Pair Cable for long distance patch runs
- Drastically reduce impedance and structural return loss compared to Stranded Conductor patch cables
- High-quality copper wire and a shortened body plug design
- Snagless boots protect the locking tabs on the RJ45 connectors from being damaged during installation

Package Includes

N202-150-BL



Tripp Lite
1111 W. 35th Street
Chicago, IL 60609 USA
Telephone: 773.869.1234
www.tripplite.com

Cable Length (m)	45.7
PHYSICAL	
Wire Gauge (AWG)	24
Shipping Dimensions (hwd / in.)	18.000 x 16.000 x 0.500
Shipping Dimensions (hwd / cm)	45.72 x 40.64 x 1.27
Shipping Weight (lbs.)	3.6000
Shipping Weight (kg)	1.63
Color	Blue
CONNECTIONS	
Side A - Connector 1	RJ45 (MALE)
Side B - Connector 1	RJ45 (MALE)
CERTIFICATIONS	
Certifications	RoHS Compliant
WARRANTY	
Product Warranty Period (Worldwide)	Lifetime limited warranty

© 2018 Tripp Lite. All rights reserved. All product and company names are trademarks or registered trademarks of their respective holders. Use of them does not imply any affiliation with or endorsement by them. Tripp Lite has a policy of continuous improvement. Specifications are subject to change without notice. Tripp Lite uses primary and third-party agencies to test its products for compliance with standards. See a list of Tripp Lite's testing agencies: <https://www.tripplite.com/products/product-certification-agencies>