



Chipsmall Limited consists of a professional team with an average of over 10 year of expertise in the distribution of electronic components. Based in Hongkong, we have already established firm and mutual-benefit business relationships with customers from,Europe,America and south Asia,supplying obsolete and hard-to-find components to meet their specific needs.

With the principle of “Quality Parts,Customers Priority,Honest Operation,and Considerate Service”,our business mainly focus on the distribution of electronic components. Line cards we deal with include Microchip,ALPS,ROHM,Xilinx,Pulse,ON,Everlight and Freescale. Main products comprise IC,Modules,Potentiometer,IC Socket,Relay,Connector.Our parts cover such applications as commercial,industrial, and automotives areas.

We are looking forward to setting up business relationship with you and hope to provide you with the best service and solution. Let us make a better world for our industry!



Contact us

Tel: +86-755-8981 8866 Fax: +86-755-8427 6832

Email & Skype: info@chipsmall.com Web: www.chipsmall.com

Address: A1208, Overseas Decoration Building, #122 Zhenhua RD., Futian, Shenzhen, China

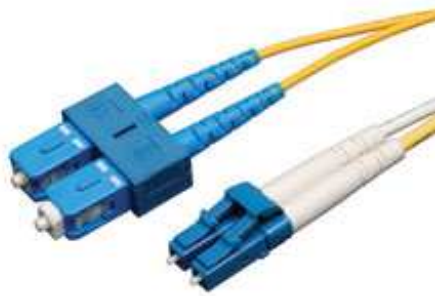




Tripp Lite
 1111 West 35th Street
 Chicago, IL 60609 USA
 Telephone: +(773) 869 1234
 E-mail: saleshelp@tripplite.com

Model #: N366-05M

5M (16-ft.) Duplex SMF 8.3/125 Patch Cable (LC/SC)



Highlights

- Premium PVC 8.3/125 micron singlemode patch cables
- Attenuation loss meets or exceeds the latest industry standards
- Twice the bandwidth throughput of multimode cable

Description

Tripp Lite's 5-meter, single mode duplex fiber optic LC/SC patch cable is manufactured from 8.3/125 zipcord fiber. The cable has SC connectors on one end, LC connectors on the other, a PVC jacket, and is FDDI and OFNR rated. Duplex single mode fiber is most commonly used in LAN applications.

Applications

- Networking equipment that requires single mode fiber optic patch cables

System Requirements

- Any fiber optic hardware or NIC card requiring singlemode duplex cable with LC/SC connectors

Package Includes



- 5-meter Duplex Single mode Fiber Patch Cable, LC/SC

Features

- Manufactured from 8.3/125 duplex (zipcord) fiber
- PVC jacket
- Length: 5-meter. Connectors: 2 SC and 2 LC connectors on each end
- Insertion loss testing performed on every connector (0.2db typical) and provided with cable
- Beveled edge on ends of glass makes insertion of plug a breeze
- Fiber made from glass (not a polymer)
- Color coded shrouds identify transmit and receive
- Fiber optic distributed data interface (FDDI) rated
- OFNR (riser rated)

Specifications

OVERVIEW	
Clad Diameter	125 micron

Core Diameter	8.3 micron
Number of Fibers	2
Intended Application	Computer Networking (Fiber)
Cable Type	SINGLEMODE 8.3/125 FIBER OPTIC
INPUT	
Cable Length (m)	5
UPC Codes	
Unit Carton UPC#	037332099570
PHYSICAL	
Color	Yellow
Style	Fiber Optic
CONNECTIONS	
Connector A	 LC
Connector B	 SC
Number of Connectors	4
WARRANTY	
Product Warranty Period (Worldwide)	Lifetime limited warranty

Related Items

Optional Products

Related Model	Description	Qty.
N352-02M	2M (6-ft.) Duplex SMF 8.3/125 Patch Cable (ST/ST)	1
N354-05M	5M (16-ft.) Duplex SMF 8.3/125 Patch Cable (SC/ST)	1
N356-02M	2M (6-ft.) Duplex SMF 8.3/125 Patch Cable (SC/SC)	1
N356-03M	3M (10-ft.) Duplex SMF 8.3/125 Patch Cable (SC/SC)	1
N366-01M	1M (3-ft.) Duplex SMF 8.3/125 Patch Cable (LC/SC)	1
N366-02M	2M (6-ft.) Duplex SMF 8.3/125 Patch Cable (LC/SC)	1
N370-02M	2M (6-ft.) Duplex SMF 8.3/125 Patch Cable (LC/LC)	1
N370-05M	5M (16-ft.) Duplex SMF 8.3/125 Patch Cable (LC/LC)	1

More information, including related products, owner's manuals, and additional technical specifications, can be found online at www.tripplite.com/en/products/model.cfm?txtModelID=2867.

Copyright © 2013 Tripp Lite. All rights reserved. All trademarks are the sole property of their respective owners. Tripp Lite has a policy of continuous improvement. Specifications are subject to change without notice. Photos may differ slightly from final products.