



Chipsmall Limited consists of a professional team with an average of over 10 year of expertise in the distribution of electronic components. Based in Hongkong, we have already established firm and mutual-benefit business relationships with customers from,Europe,America and south Asia,supplying obsolete and hard-to-find components to meet their specific needs.

With the principle of "Quality Parts,Customers Priority,Honest Operation,and Considerate Service",our business mainly focus on the distribution of electronic components. Line cards we deal with include Microchip,ALPS,ROHM,Xilinx,Pulse,ON,Everlight and Freescale. Main products comprise IC,Modules,Potentiometer,IC Socket,Relay,Connector.Our parts cover such applications as commercial,industrial, and automotives areas.

We are looking forward to setting up business relationship with you and hope to provide you with the best service and solution. Let us make a better world for our industry!



## Contact us

Tel: +86-755-8981 8866 Fax: +86-755-8427 6832

Email & Skype: info@chipsmall.com Web: www.chipsmall.com

Address: A1208, Overseas Decoration Building, #122 Zhenhua RD., Futian, Shenzhen, China



PART NAME	NON-METALLIC ENCLOSURE (STYLE B)	PART No.	NBB-10241 & NBB-10261 & NBB-22241	REV. DATE	3-18-10
-----------	----------------------------------	----------	-----------------------------------	-----------	---------

ALL ENCLOSURES MEET NEMA TYPE 1, 2, 4, 4X, 12 & 13 AND IEC529-IP65

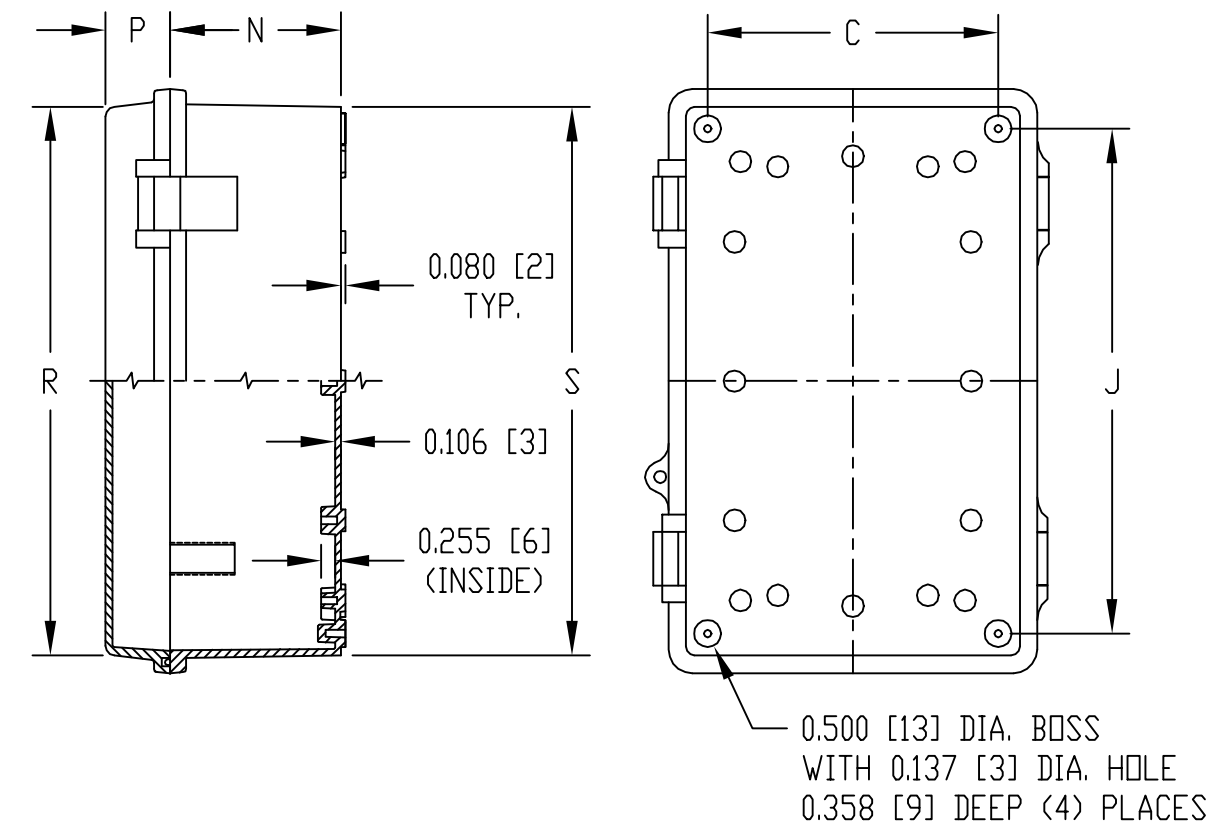
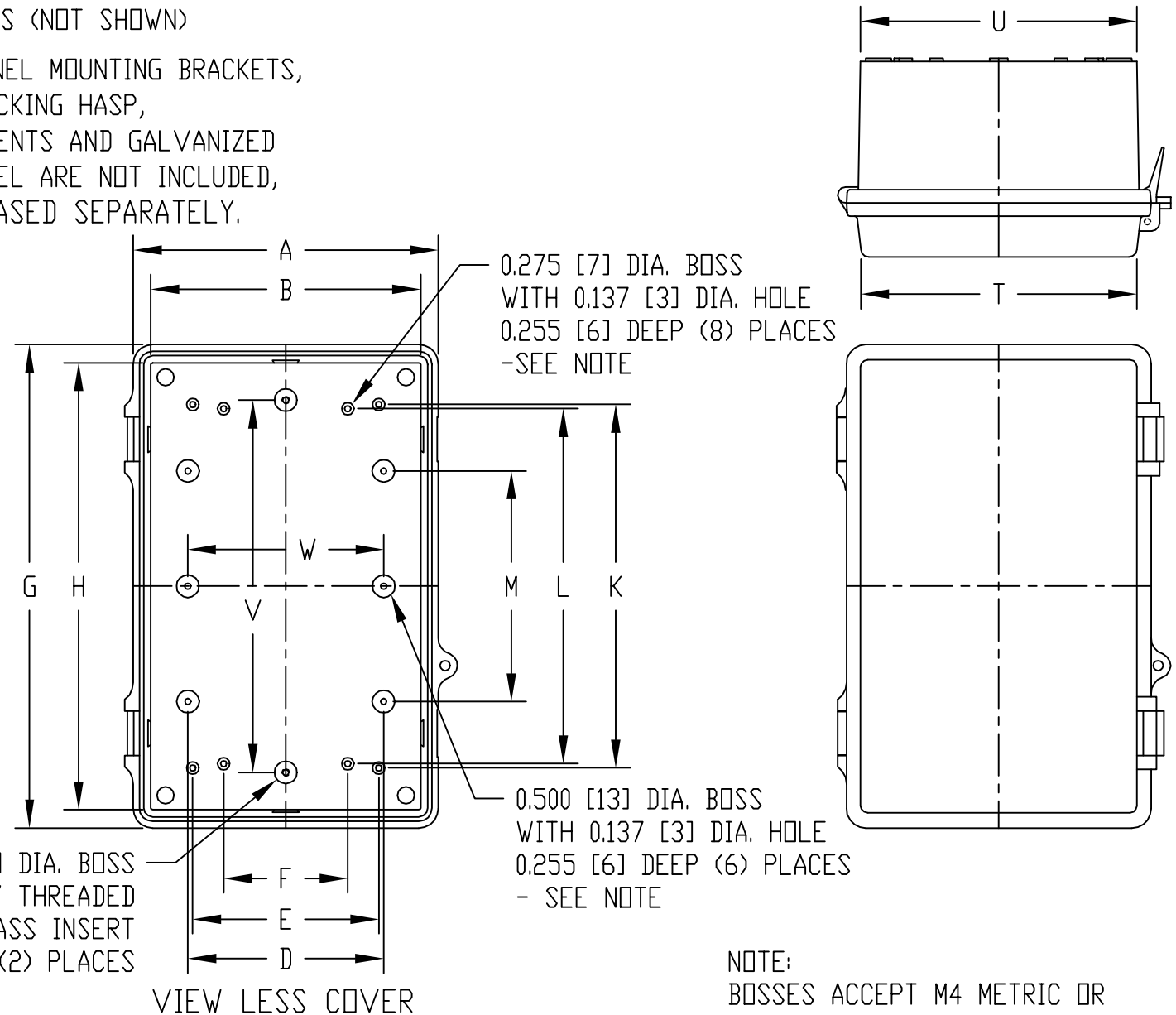
SUPPLIED WITH (4) SMALL WALL MOUNTING BRKTS. (REF. NBX-10920) & (4) M5x0.8 x 12mm LG. TRUSS HD. SELF-TAPPING SCREWS (NOT SHOWN)

INTERNAL HINGED PANEL MOUNTING BRACKETS, STAINLESS STEEL LOCKING HASP, AIR AND MOISTURE VENTS AND GALVANIZED STEEL INTERNAL PANEL ARE NOT INCLUDED, BUT CAN BE PURCHASED SEPARATELY.

**MATERIAL:**  
**UL508-4X INDOOR VERSION**  
 SOLID BODY & COVER \_\_\_\_\_ LIGHT GRAY ABS/PC BLENDED PLASTIC  
 UL94-5VB FLAMMABILITY RATING  
 CLEAR COVER \_\_\_\_\_ POLYCARBONATE PLASTIC  
 UL94V-0 FLAMMABILITY RATING  
 UV STABILIZED

**ABS VERSION**  
 SOLID BODY & COVER \_\_\_\_\_ LIGHT GRAY ABS  
 UL94-HB FLAMMABILITY RATING

LATCHES & HINGES \_\_\_\_\_ NON-METALLIC  
 WALL MOUNTING BRACKETS \_\_\_\_\_ STAINLESS STEEL  
 COVER INCLUDES GRAY POLYURETHANE GASKET.



NOTE: BOSSES ACCEPT M4 METRIC OR #8 STD. SHEET METAL SCREWS x 0.250 [6] LG. (NOT SUPPLIED)

DIMENSIONS = INCHES [MILLIMETERS]

NOTE: ALL DIMENSIONS HAVE ±0.039 [±1] TOLERANCE UNLESS OTHERWISE SPECIFIED

UL508-4X INDOOR VERSION PART NO.			ABS VERSION PART NO.			DIMENSIONS																
SOLID COVER	CLEAR COVER	SOLID COVER	A	B	C	D	E	F	G	H	J	K	L	M	N	P	R	S	T	U	V	W
NBB-10241	NBB-10261	NBB-22241	6.780 [172]	6.000 [152]	5.350 [136]	4.352 [111]	4.138 [105]	2.765 [70]	10.750 [273]	9.940 [252]	9.294 [236]	8.085 [205]	7.896 [201]	5.129 [130]	3.142 [80]	1.190 [30]	10.100 [257]	10.090 [256]	6.140 [156]	6.150 [156]	8.283 [210]	4.360 [111]