



Chipsmall Limited consists of a professional team with an average of over 10 year of expertise in the distribution of electronic components. Based in Hongkong, we have already established firm and mutual-benefit business relationships with customers from,Europe,America and south Asia,supplying obsolete and hard-to-find components to meet their specific needs.

With the principle of “Quality Parts,Customers Priority,Honest Operation,and Considerate Service”,our business mainly focus on the distribution of electronic components. Line cards we deal with include Microchip,ALPS,ROHM,Xilinx,Pulse,ON,Everlight and Freescale. Main products comprise IC,Modules,Potentiometer,IC Socket,Relay,Connector.Our parts cover such applications as commercial,industrial, and automotives areas.

We are looking forward to setting up business relationship with you and hope to provide you with the best service and solution. Let us make a better world for our industry!



Contact us

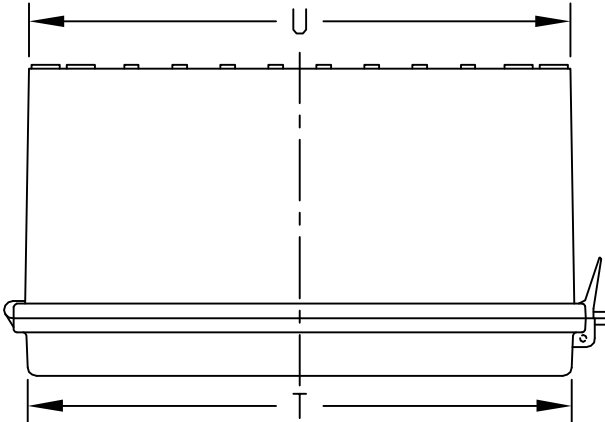
Tel: +86-755-8981 8866 Fax: +86-755-8427 6832

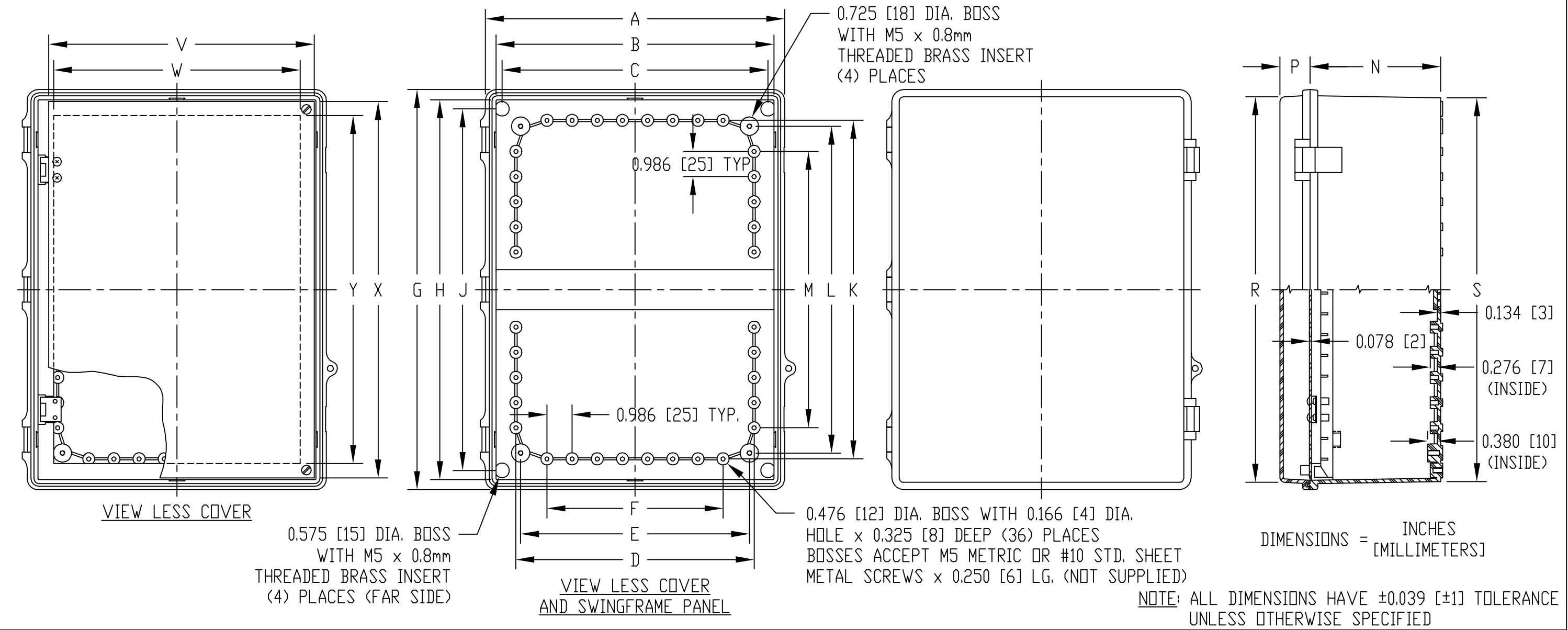
Email & Skype: info@chipsmall.com Web: www.chipsmall.com

Address: A1208, Overseas Decoration Building, #122 Zhenhua RD., Futian, Shenzhen, China



PART NAME	NON-METALLIC ENCLOSURE (STYLE E)	PART No.	NBE-10547 AND NBE-10567
------------------	---	-----------------	--------------------------------

<p>MATERIAL:</p> <p>SOLID BODY & COVER _____ ABS/PC BLENDED PLASTIC UL94-5VB FLAMMABILITY RATING</p> <p>CLEAR COVER _____ POLYCARBONATE PLASTIC UL94V-0 FLAMMABILITY RATING UV STABILIZED</p> <p>PANEL _____ 0.078 THICK ALUMINUM</p> <p>LATCHES & HINGES _____ NON-METALLIC</p> <p>WALL MOUNTING BRACKETS _____ STAINLESS STEEL</p>	<p>FINISH:</p> <p>BODY _____ LIGHT GRAY</p> <p>COVER _____ LIGHT GRAY OR CLEAR</p> <p>PANEL _____ ANODIZED</p> <p>COVER INCLUDES GRAY POLY-URETHANE GASKET.</p> <p>UNIT COMES COMPLETE WITH (4) WALL MOUNTING BRKTS. & (4) M5 x 10mm LG. TRUSS HD. MACHINE SCREWS (NOT SHOWN)</p>		<p>INDUSTRY STANDARDS:</p> <p>UL508 TYPE 1, 2, 4, 4X INDOOR, 12 & 13</p> <p>NEMA TYPE 1, 2, 4, 4X, 12 & 13</p> <p>IEC529-IP65</p> <p>AIR AND MOISTURE VENTS, GALVANIZED STEEL INTERNAL PANEL AND STAINLESS STEEL LOCKING HASP ARE NOT INCLUDED, BUT CAN BE PURCHASED SEPARATELY.</p>
---	--	---	---



PART NO.		DIMENSIONS																					
SOLID COVER	CLEAR COVER	A	B	C	D	E	F	G	H	J	K	L	M	N	P	R	S	T	U	V	W	X	Y
NBE-10547	NBE-10567	11.727 [298]	10.894 [277]	10.424 [265]	9.335 [237]	8.969 [228]	6.902 [175]	15.680 [398]	14.877 [378]	14.167 [360]	13.265 [337]	12.801 [325]	10.828 [275]	5.110 [130]	1.185 [30]	15.105 [384]	15.035 [382]	11.147 [283]	11.090 [282]	10.400 [264]	9.659 [245]	14.740 [374]	13.635 [346]