



Chipsmall Limited consists of a professional team with an average of over 10 year of expertise in the distribution of electronic components. Based in Hongkong, we have already established firm and mutual-benefit business relationships with customers from,Europe,America and south Asia,supplying obsolete and hard-to-find components to meet their specific needs.

With the principle of “Quality Parts,Customers Priority,Honest Operation,and Considerate Service”,our business mainly focus on the distribution of electronic components. Line cards we deal with include Microchip,ALPS,ROHM,Xilinx,Pulse,ON,Everlight and Freescale. Main products comprise IC,Modules,Potentiometer,IC Socket,Relay,Connector.Our parts cover such applications as commercial,industrial, and automotives areas.

We are looking forward to setting up business relationship with you and hope to provide you with the best service and solution. Let us make a better world for our industry!



Contact us

Tel: +86-755-8981 8866 Fax: +86-755-8427 6832

Email & Skype: info@chipsmall.com Web: www.chipsmall.com

Address: A1208, Overseas Decoration Building, #122 Zhenhua RD., Futian, Shenzhen, China

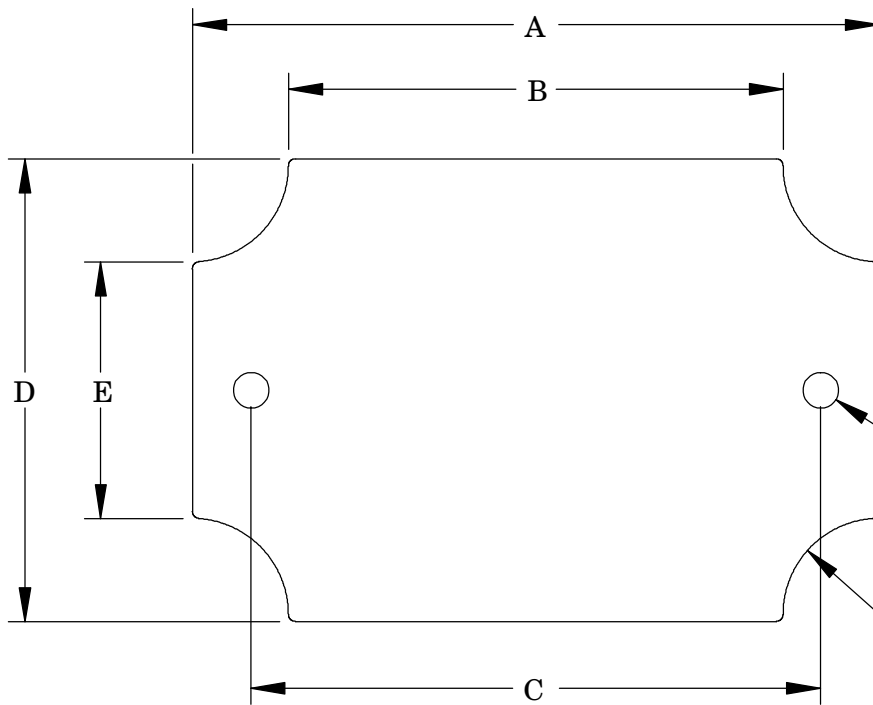


PART NAME

INTERNAL PANEL

PART No.

NBX-10975 THRU NBX-10979 AND NBX-10984



MATERIAL:

16 GAUGE GALVANIZED STEEL (.062 [1.5 mm] THK)

ALL DIMENSIONS HAVE A $\pm .015$ [.4 mm] TOLERANCE UNLESS OTHERWISE SPECIFIED

ALL PANELS ARE SUPPLIED WITH QTY. (2) M4 x 8mm LG. TRUSS HD. PHILLIPS DRIVE STAINLESS STEEL MACHINE SCREWS

$\phi .197$
[5 mm]
(2) PLCS.

F RADIUS (4) PLCS.

PART No.	A	B	C	D	E	F
NBX-10975	3.805 [96.5 mm]	2.739 [69.5 mm]	3.170 [80 mm]	2.560 [65 mm]	1.415 [36 mm]	.551 [14 mm]
NBX-10976	4.556 [115.5 mm]	3.492 [88.5 mm]	3.930 [99.5 mm]	2.560 [65 mm]	1.415 [36 mm]	.551 [14 mm]
NBX-10977	6.516 [165.5 mm]	5.450 [138 mm]	5.866 [149.5 mm]	2.560 [65 mm]	1.415 [36 mm]	.551 [14 mm]
NBX-10978	9.233 [234.5 mm]	8.167 [207 mm]	8.622 [219 mm]	2.560 [65 mm]	1.415 [36 mm]	.551 [14 mm]
NBX-10979	9.262 [235 mm]	8.283 [210 mm]	8.283 [210 mm]	5.384 [137 mm]	4.409 [112 mm]	.437 [11 mm]
NBX-10984	4.882 [124 mm]	4.194 [106.5 mm]	4.330 [110 mm]	4.882 [124 mm]	4.194 [106.5 mm]	.344 [8.7 mm]