



Chipsmall Limited consists of a professional team with an average of over 10 year of expertise in the distribution of electronic components. Based in Hongkong, we have already established firm and mutual-benefit business relationships with customers from,Europe,America and south Asia,supplying obsolete and hard-to-find components to meet their specific needs.

With the principle of “Quality Parts,Customers Priority,Honest Operation,and Considerate Service”,our business mainly focus on the distribution of electronic components. Line cards we deal with include Microchip,ALPS,ROHM,Xilinx,Pulse,ON,Everlight and Freescale. Main products comprise IC,Modules,Potentiometer,IC Socket,Relay,Connector.Our parts cover such applications as commercial,industrial, and automotives areas.

We are looking forward to setting up business relationship with you and hope to provide you with the best service and solution. Let us make a better world for our industry!



## Contact us

Tel: +86-755-8981 8866 Fax: +86-755-8427 6832

Email & Skype: info@chipsmall.com Web: www.chipsmall.com

Address: A1208, Overseas Decoration Building, #122 Zhenhua RD., Futian, Shenzhen, China

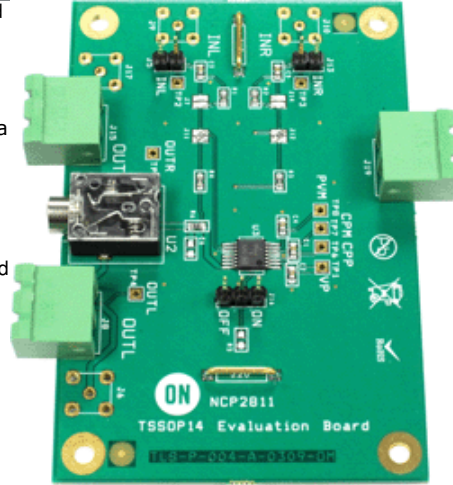




## NCP2811ADTBRGEVB: Dual Audio Power Evaluation Board

### Evaluation Board Description

NCP2811 is a dual audio power amplifier designed for portable communication device applications such as mobile phones. This board showcases the A version of this part in the TSSOP-14 package. This part is capable of delivering 27 mW of continuous average power into a 16 Ω load from a 2.7 V power supply with a THD+N of 1%. Based on the power supply delivered to the device, an internal power management block generates a symmetrical positive and negative voltage. Thus, the internal amplifiers provide outputs referenced to Ground. In this True Ground configuration, the two external heavy coupling capacitors can be removed. It offers significant space and cost savings compared to a typical stereo application.



### Features and Applications

#### Features

- Pop and Click Noise Protection Circuitry.
- Ultra Low Current Shutdown Mode
- 2.7 V-5.0 V Operation
- Thermal Overload Protection Circuitry

### Evaluation Board Information

Evaluation Board	Status	Compliance	Short Description	Parts Used	Action
<a href="#">NCP2811ADTBRGEVB</a>	Active		Dual Audio Power Evaluation Board	<a href="#">NCP2811ADTBR2G</a>	

### Technical Documents

Type	Document Title	Document ID/ Size	Rev
Eval Board: BOM	NCP2811ADTBRGEVB Bill of Materials ROHS Compliant	<a href="#">NCP2811ADTBRGEVB_BOM_ROHS.PDF</a> - 152.0 KB	0
Eval Board: Gerber	NCP2811ADTBRGEVB Gerber Layout Files (Zip Format)	<a href="#">NCP2811ADTBRGEVB_GERBER.ZIP</a> - 66.0 KB	0
Eval Board: Schematic	NCP2811ADTBRGEVB Schematic	<a href="#">NCP2811ADTBRGEVB_SCHEMATIC.PDF</a> - 233.0 KB	0
Eval Board: Test Procedure	NCP2811ADTBRGEVB Test Procedure	<a href="#">NCP2811ADTBRGEVB_TEST_PROCEDURE.PDF</a> - 146.0 KB	0

