



Chipsmall Limited consists of a professional team with an average of over 10 year of expertise in the distribution of electronic components. Based in Hongkong, we have already established firm and mutual-benefit business relationships with customers from,Europe,America and south Asia,supplying obsolete and hard-to-find components to meet their specific needs.

With the principle of “Quality Parts,Customers Priority,Honest Operation,and Considerate Service”,our business mainly focus on the distribution of electronic components. Line cards we deal with include Microchip,ALPS,ROHM,Xilinx,Pulse,ON,Everlight and Freescale. Main products comprise IC,Modules,Potentiometer,IC Socket,Relay,Connector.Our parts cover such applications as commercial,industrial, and automotives areas.

We are looking forward to setting up business relationship with you and hope to provide you with the best service and solution. Let us make a better world for our industry!



Contact us

Tel: +86-755-8981 8866 Fax: +86-755-8427 6832

Email & Skype: info@chipsmall.com Web: www.chipsmall.com

Address: A1208, Overseas Decoration Building, #122 Zhenhua RD., Futian, Shenzhen, China



NCP4305 Synchronous Rectification Evaluation Board User's Manual



www.onsemi.com

Table 1. GENERAL PARAMETERS

SMPS Type	Supply Voltage	Reverse Voltage	Effective Resistance
LLC	5–35 V	40 V	0.9 mΩ

The NCP4305 features a very precise 0 mV turn-off comparator that supports even very low current flowing through the MOSFET even when very low $R_{DS(on)}$ synchronous MOSFETs is used.

- Precise Turn-off Comparator
- Wide Input Voltage Range
- High Operation Frequency
- Strong MOSFET Driver
- High Efficiency
- Adjustable Minimum On and Off Times
- Light Load Detection Feature
- Capable to Operate in Positive and Negative Branch
- Small size

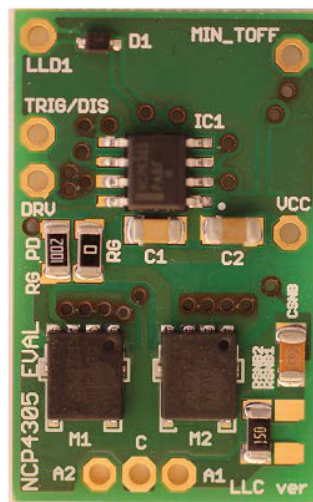


Figure 1. NCP4305 Evaluation Board

NCP4305DGEVB

Connection Diagram

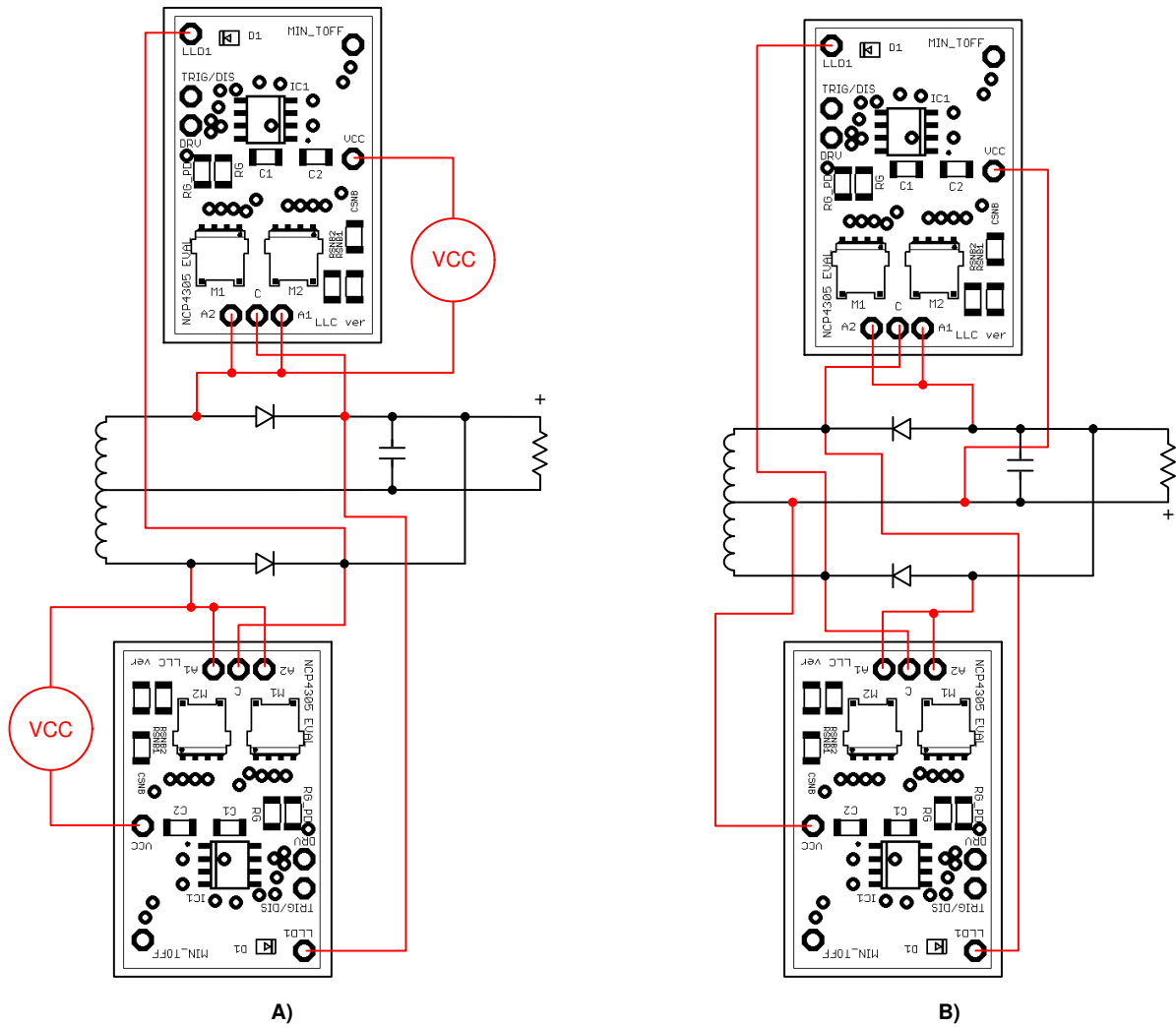


Figure 2. Possible Connections in to Circuit

The evaluation board can be connected in circuit where the rectification diode is in the positive or negative branch. When connection to a positive branch is used, it is necessary to use an external power supply (or auxiliary winding with

rectification) to provide power to the evaluation board. VCC should be referenced to A1 or A2 points. When LLD function is used it is needed to connect LLD1 pin with opposite side rectifier cathode.

Evaluation Board Schematic

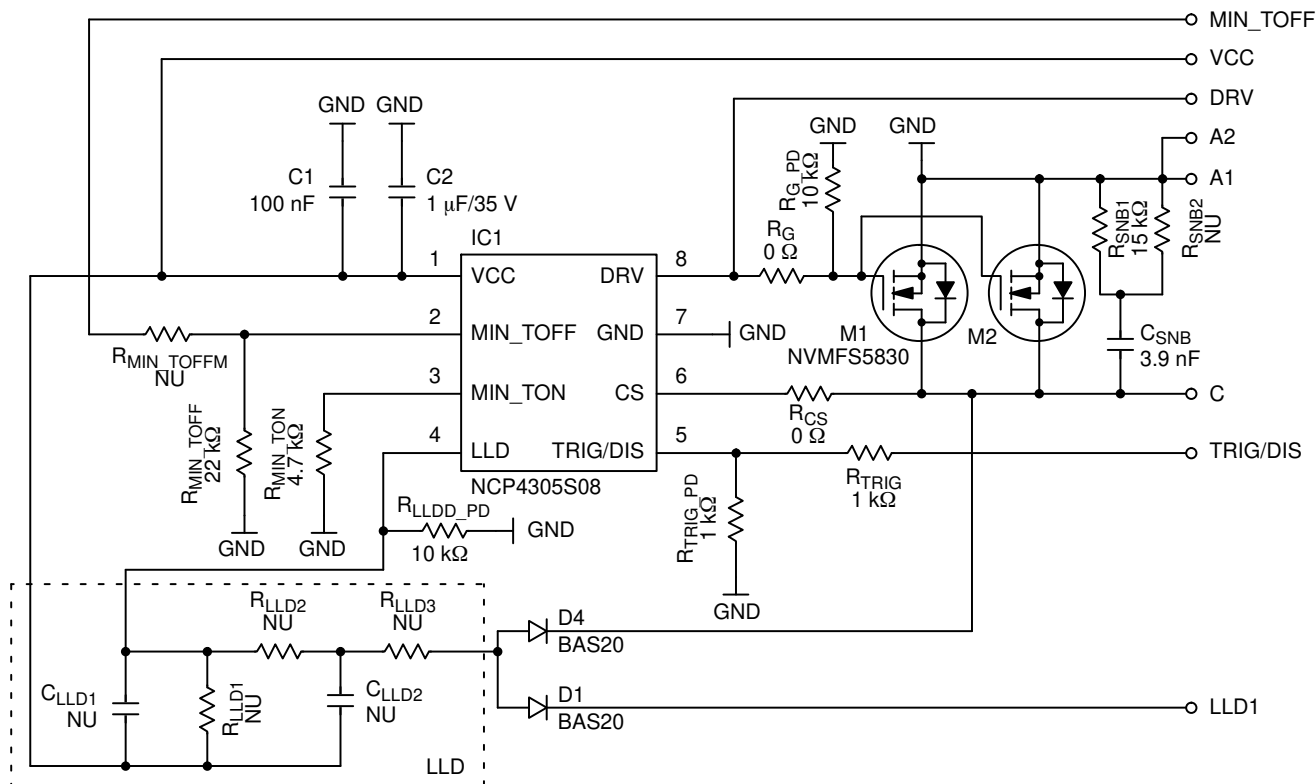


Figure 3. Schematic of the NCP4305

The evaluation board was designed to support a minimal external component count implementation. C1 and C2 are decoupling capacitors. They should be placed as close as possible to the VCC and GND pins. Resistors R_{MIN_TON} and R_{MIN_TOFF} are used to set the protection interval when the synchronous MOSFET is turned on and off. Resistor R_{MIN_TOFFM} is placed there to support a situation when an external circuit provides control for minimum off-time modulation. This is needed only in situations when the minimum off-time cannot be set across the whole range of power supply operation. Resistor R_{TRIG_PD} is only pull down for TRIG pin and R_{TRIG} is only protection resistor. A position for a gate resistor R_G is provided in case there is a need to slow down the MOSFET switching process. The turn-off (and also the turn-on) threshold can be lowered when resistor R_{CS} is used. Components C_{SNB} , R_{SNB1} and R_{SNB2} form a snubber circuit.

LLD circuit consists of C_{LLD1} , C_{LLD2} , R_{LLD1} , R_{LLD2} , R_{LLD3} and D4. Purpose of circuit is to estimate output power. This can be done in two ways. The first is to measure duty cycle of skip burst. LLD circuit time constant is high and it filters and averages duty cycle ratio. This is good for systems which transfer low energy during skip each switch cycle. When duty cycle of skip bursts is low NCP4305 enters disable mode to save energy, when it is higher SR controller

starts to operate and SR transistor gate voltage is modulated according to skip duty cycle. The second option is for system which transfers lot of energy in few first pulses in skip and then transferred energy is minimal. In this case LLD circuit time constant is low and R_{LLD3} resistance is close to 0. LLD pin voltage drops down in first switching pulse in skip mode and NCP4305 wakes up fast and allows using fully open SR transistor. When skip burst ends, LLD voltage goes high and if time between skip bursts is long enough NCP4305 enters disable mode to save energy.

Circuit Layout

The PCB consists of a 2 layer FR4 board with 35 μm copper cladding. All components are surface mount and most of the components that may require adjustment are on the same side and use 1206 values for easy rework. Critical component such as blocking capacitors C1 and C2 have to be placed carefully near the IC. The synchronous driver path to the MOSFETs was done with very low resistance and parasitic inductance to minimize emissions and minimize turn-on and turn-off times. The same is true for the CS pin. For the CS pin, a kelvin contact was done to be able to sense the voltage directly at the drain. Improper connection of the GND and CS connects can impact the turn-off process especially when a very low $R_{DS(on)}$ MOSFETs are used.

NCP4305DGEVB

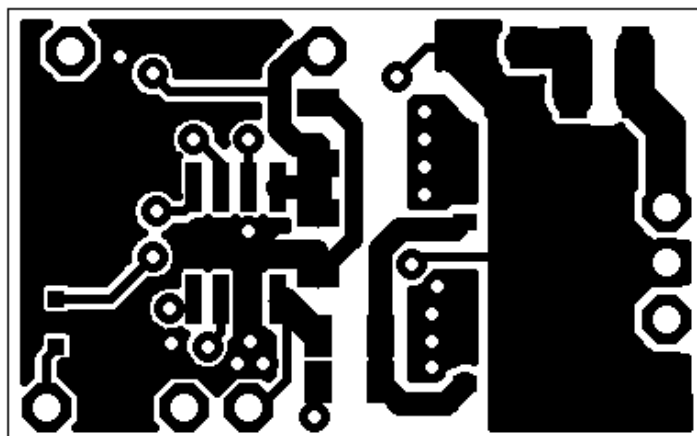


Figure 4. Top Layer

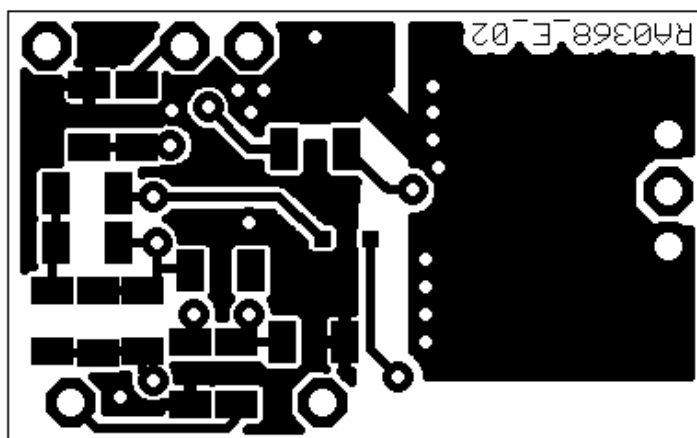


Figure 5. Bottom Layer

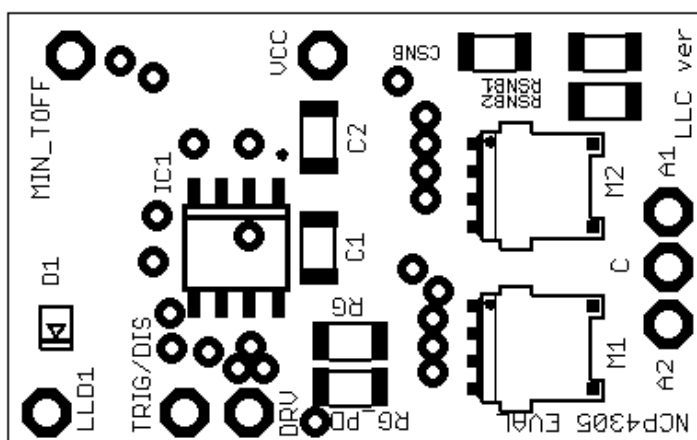


Figure 6. Top Side Components


5

NCP4305DGEVB

Table 2. BILL OF MATERIALS FOR NCP4305 PUT-IN BOARD SO-8FL (Note 1)

Parts	Qty	Description	Value	Tolerance	Footprint	Manufacturer	Manufacturer Part Number	Substitution Allowed
C1	1	Ceramic Capacitor	100 nF	10%	1206	Kemet	C1206X104K5RACTU	Yes
C2	1	Ceramic Capacitor	1 μ F/50 V	10%	1206	Kemet	C1206X105K5RACTU	Yes
C _{LLD1} , C _{LLD2}	2	–	NU	–	1206	–	–	Yes
C _{SNB}	1	Ceramic Capacitor	3.9 nF	–	1206	Kemet	C1206C392K5RACTU	Yes
D1, D4	2	Switching Diode	BAS20HT1G	–	SOD–323	ON Semiconductor	BAS20HT1G	Yes
IC1	1	Secondary Side Synchronous Rectification Controller	NCP4305D	–	SOIC–08	ON Semiconductor	NCP4305DDR2G	No
M1, M2	2	N-Channel Power MOSFET	NVMFS5830NL	–	SO–8FL	ON Semiconductor	NVMFS5830NLT1G	Yes
R _{CS} , R _G	2	Resistor SMD	0 Ω	5%	1206	Yageo	RC1206JR–070RL	Yes
R _{G_PD}	1	Resistor SMD	10 k Ω	1%	1206	Yageo	RC1206FR–0710KL	Yes
R _{LLD_PD} , R _{TRIG} , R _{TRIG_PD}	3	Resistor SMD	1 k Ω	1%	1206	Yageo	RC1206FR–071KL	Yes
R _{LLD1} , R _{LLD2} , R _{LLD3} , R _{SNB2} , R _{MIN_TOFFML}	5	Resistor SMD	NU	–	1206	–	–	Yes
R _{MIN_TOFF}	1	Resistor SMD	22 k Ω	1%	1206	Yageo	RC1206FR–0722KL	Yes
R _{MIN_TON}	1	Resistor SMD	4.7 k Ω	1%	1206	Yageo	RC1206FR–074K7L	Yes
R _{SNB1}	1	Resistor SMD	15 Ω	1%	1206	Yageo	RC1206FR–0715RL	Yes

1. All parts are Pb-Free

ON Semiconductor and the  are registered trademarks of Semiconductor Components Industries, LLC (SCILLC) or its subsidiaries in the United States and/or other countries. SCILLC owns the rights to a number of patents, trademarks, copyrights, trade secrets, and other intellectual property. A listing of SCILLC's product/patent coverage may be accessed at www.onsemi.com/site/pdf/Patent-Marking.pdf. SCILLC reserves the right to make changes without further notice to any products herein. SCILLC makes no warranty, representation or guarantee regarding the suitability of its products for any particular purpose, nor does SCILLC assume any liability arising out of the application or use of any product or circuit, and specifically disclaims any and all liability, including without limitation special, consequential or incidental damages. "Typical" parameters which may be provided in SCILLC data sheets and/or specifications can and do vary in different applications and actual performance may vary over time. All operating parameters, including "Typicals" must be validated for each customer application by customer's technical experts. SCILLC does not convey any license under its patent rights nor the rights of others. SCILLC products are not designed, intended, or authorized for use as components in systems intended for surgical implant into the body, or other applications intended to support or sustain life, or for any other application in which the failure of the SCILLC product could create a situation where personal injury or death may occur. Should Buyer purchase or use SCILLC products for any such unintended or unauthorized application, Buyer shall indemnify and hold SCILLC and its officers, employees, subsidiaries, affiliates, and distributors harmless against all claims, costs, damages, and expenses, and reasonable attorney fees arising out of, directly or indirectly, any claim of personal injury or death associated with such unintended or unauthorized use, even if such claim alleges that SCILLC was negligent regarding the design or manufacture of the part. SCILLC is an Equal Opportunity/Affirmative Action Employer. This literature is subject to all applicable copyright laws and is not for resale in any manner.

PUBLICATION ORDERING INFORMATION

LITERATURE FULFILLMENT:

Literature Distribution Center for ON Semiconductor
19521 E. 32nd Pkwy, Aurora, Colorado 80011 USA
Phone: 303-675-2175 or 800-344-3860 Toll Free USA/Canada
Fax: 303-675-2176 or 800-344-3867 Toll Free USA/Canada
Email: orderlit@onsemi.com

N. American Technical Support: 800-282-9855 Toll Free
USA/Canada
Europe, Middle East and Africa Technical Support:
Phone: 421 33 790 2910
Japan Customer Focus Center
Phone: 81-3-5817-1050

ON Semiconductor Website: www.onsemi.com

Order Literature: <http://www.onsemi.com/orderlit>

For additional information, please contact your local Sales Representative