



Chipsmall Limited consists of a professional team with an average of over 10 year of expertise in the distribution of electronic components. Based in Hongkong, we have already established firm and mutual-benefit business relationships with customers from,Europe,America and south Asia,supplying obsolete and hard-to-find components to meet their specific needs.

With the principle of “Quality Parts,Customers Priority,Honest Operation,and Considerate Service”,our business mainly focus on the distribution of electronic components. Line cards we deal with include Microchip,ALPS,ROHM,Xilinx,Pulse,ON,Everlight and Freescale. Main products comprise IC,Modules,Potentiometer,IC Socket,Relay,Connector.Our parts cover such applications as commercial,industrial, and automotives areas.

We are looking forward to setting up business relationship with you and hope to provide you with the best service and solution. Let us make a better world for our industry!



Contact us

Tel: +86-755-8981 8866 Fax: +86-755-8427 6832

Email & Skype: info@chipsmall.com Web: www.chipsmall.com

Address: A1208, Overseas Decoration Building, #122 Zhenhua RD., Futian, Shenzhen, China



Test Procedure for the NCP5106B Evaluation Board

ON Semiconductor



6/6/2007

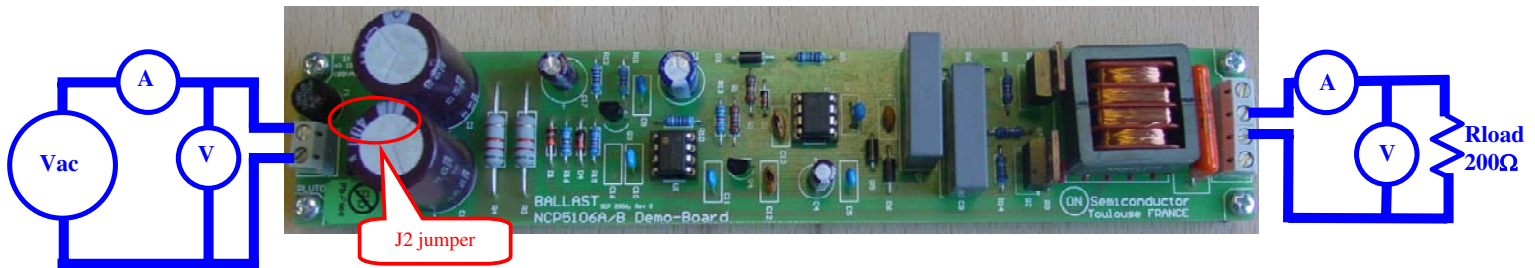


Table 1: Required Equipment

AC power source can be able to deliver 230Vrms or 110Vrms	two volt-meters	two ampere-meters
1 resistive load: 200 Ω / 50 W	One NCP5106B Evaluation Board	

Test Procedure:

1. First of all check if you need or not the jumper #2 (J2 on the board close the diode bridge). This jumper must be removed in case of European mains (230 Vac input voltage) and have to placed in case of US mains (110 Vac). This jumper is used to build a voltage doublers just after the bridge diode in case of US mains input voltage range.
2. Connect the test setup as shown above:
 - AC source
 - Voltmeter and Ampere meter on the load
 - Load on the output
3. Apply 230 Vac if European mains or 110 Vac for the US mains on the input connector.

4. Compare I_{load} and V_{load} with the following table according your input mains voltage.
5. If you get the correct output and input voltage, you can now connect a 36 W fluorescent tube on the output (see the ballast connection figure).

Test results:

Input mains	J2	V_{in} (Vrms)	I_{in} (Arms)	V_{load} (Vrms)	I_{load} (Arms)
European	Removed	230 V	278 mA	303 V	370 mA
US	Yes → max input voltage: 132 Vrms	110 V	514 mA	263 V	340 mA

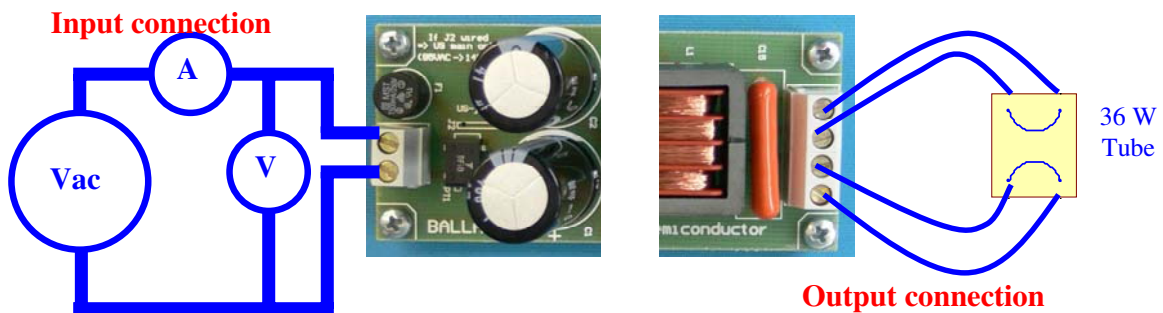


Figure 1: Ballast connection