



Chipsmall Limited consists of a professional team with an average of over 10 year of expertise in the distribution of electronic components. Based in Hongkong, we have already established firm and mutual-benefit business relationships with customers from,Europe,America and south Asia,supplying obsolete and hard-to-find components to meet their specific needs.

With the principle of “Quality Parts,Customers Priority,Honest Operation,and Considerate Service”,our business mainly focus on the distribution of electronic components. Line cards we deal with include Microchip,ALPS,ROHM,Xilinx,Pulse,ON,Everlight and Freescale. Main products comprise IC,Modules,Potentiometer,IC Socket,Relay,Connector.Our parts cover such applications as commercial,industrial, and automotives areas.

We are looking forward to setting up business relationship with you and hope to provide you with the best service and solution. Let us make a better world for our industry!



## Contact us

Tel: +86-755-8981 8866 Fax: +86-755-8427 6832

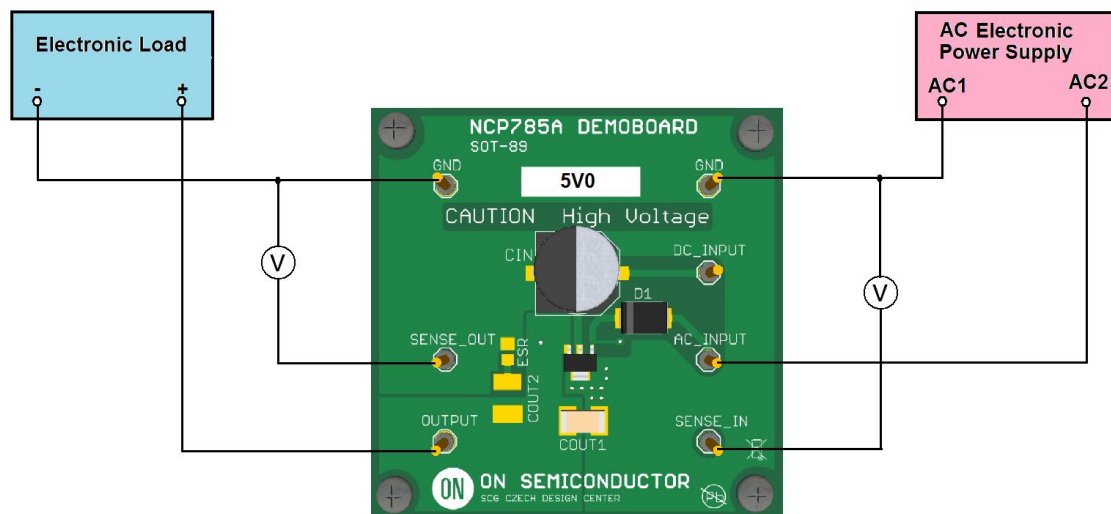
Email & Skype: [info@chipsmall.com](mailto:info@chipsmall.com) Web: [www.chipsmall.com](http://www.chipsmall.com)

Address: A1208, Overseas Decoration Building, #122 Zhenhua RD., Futian, Shenzhen, China





## Test Procedure for NCP785AH50GEVB



### Test procedure:

1. Connect the test setup as shown Figure above
2. Apply an input AC voltage  **$V_{in} = 85 \text{ Vac}$**
4. Apply  $I_{out} = 0 \text{ mA}$  load.
5. Check that  $V_{out}$  is  **$5.0 \text{ V} \pm 5\%$** .
6. Increase  $I_{out}$  up to  **$10 \text{ mA}$**
7. Check that  $V_{out}$  is  **$5.0 \text{ V} \pm 5\%$** .
7. Increase  $V_{in}$  up to  **$235 \text{ Vac}$**  and decrease the load in accordance with **SOA**
8. Power down the Load
9. Power down the Input Voltage
10. End of test