



Chipsmall Limited consists of a professional team with an average of over 10 year of expertise in the distribution of electronic components. Based in Hongkong, we have already established firm and mutual-benefit business relationships with customers from,Europe,America and south Asia,supplying obsolete and hard-to-find components to meet their specific needs.

With the principle of “Quality Parts,Customers Priority,Honest Operation,and Considerate Service”,our business mainly focus on the distribution of electronic components. Line cards we deal with include Microchip,ALPS,ROHM,Xilinx,Pulse,ON,Everlight and Freescale. Main products comprise IC,Modules,Potentiometer,IC Socket,Relay,Connector.Our parts cover such applications as commercial,industrial, and automotives areas.

We are looking forward to setting up business relationship with you and hope to provide you with the best service and solution. Let us make a better world for our industry!



Contact us

Tel: +86-755-8981 8866 Fax: +86-755-8427 6832

Email & Skype: info@chipsmall.com Web: www.chipsmall.com

Address: A1208, Overseas Decoration Building, #122 Zhenhua RD., Futian, Shenzhen, China



NCV887601BSTGEVB

NCV887601 Automotive Grade High-Frequency Start-Stop Boost Controller Evaluation Board User's Manual



ON Semiconductor®

<http://onsemi.com>

EVAL BOARD USER'S MANUAL

Description

This NCV887601 evaluation board provides a convenient way to evaluate a high frequency boost controller designed to supply a minimum output voltage during Start-Stop vehicle battery voltage sags. The unit is in low I_q sleep-mode under normal battery operating condition and will wake-up when the monitored voltage drops below 7.3 V and begin regulating once 6.8 V is reached. Switching frequency is set to 440 kHz with a user selectable ROSC resistor. The evaluation board is rated 6.8 V / 3.6 A at a 2.6 V input voltage. Operation below 2.6 V is possible if output current is reduced.

Key Features

- Automatic enable below 7.3 V
- Boost Operation at 6.8 V
- 440 kHz Switching Frequency
- Input Undervoltage Lockout
- Wide Input Voltage of 2.6 V to 45 V
- Low Quiescent Current in Sleep Mode ($<11 \mu\text{A}$ Typical)
- Cycle-by-Cycle Current Limit Protection
- Status Monitoring
- Automotive Grade

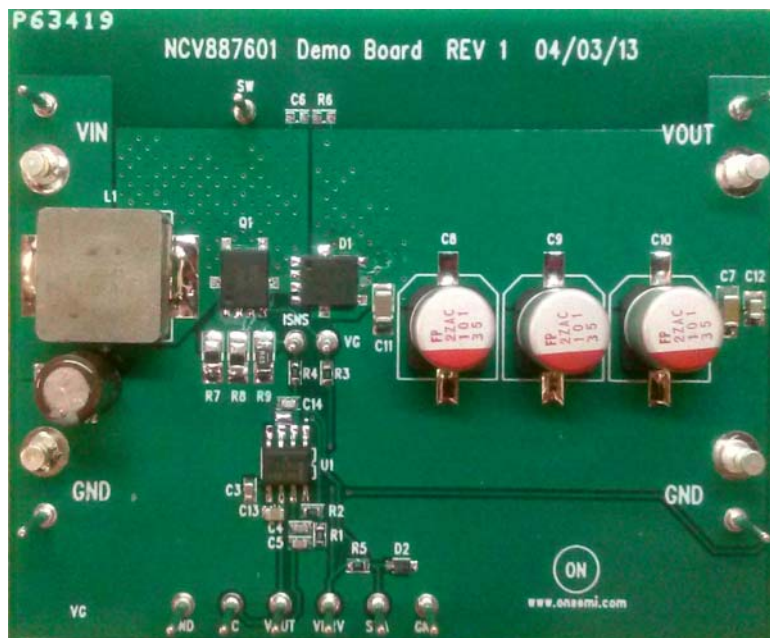


Figure 1. NCV887601 Start-Stop Evaluation Board

NCV887601BSTGEVB

Table 1. EVALUATION BOARD TERMINALS

| Terminal | Function |
|--------------------|--|
| VIN (large post) | Positive DC input voltage (power) |
| GND (large post) | Common DC return (power) |
| VOOUT (large post) | Regulated DC output voltage (power) |
| GND (small post) | Common DC return, monitoring point |
| VC (small post) | Voltage compensation, monitoring point |
| VOOUT (small post) | Regulated DC output voltage, monitoring point |
| VDRV (small post) | Driving voltage, monitoring point |
| STA (small post) | IC status, monitoring point |
| ISNS (small post) | Current sense resistor voltage, monitoring point |
| VG (small post) | MOSFET gate voltage, monitoring point |
| SW (small post) | MOSFET drain voltage, monitoring point |

Table 2. ABSOLUTE MAXIMUM RATINGS (Voltages are with respect to GND)

| Rating | Value | Unit |
|--|--------------|------|
| DC supply voltage (VIN) | -0.3 to 45 V | V |
| DC supply voltage (EN, SYNC) | -0.3 to 6 V | V |
| Junction Temperature | -40 to 150 | °C |
| Ambient temperature (Evaluation Board) | -40 to 105 | °C |

Stresses exceeding Maximum Ratings may damage the device. Maximum Ratings are stress ratings only. Functional operation above the Recommended Operating Conditions is not implied. Extended exposure to stresses above the Recommended Operating Conditions may affect device reliability.

Table 3. ELECTRICAL CHARACTERISTICS

($T_A = 25^\circ\text{C}$, $6\text{ V} \leq V_{IN} \leq V_{out_LED}$, $V_{EN} = 2\text{ V}$, unless otherwise specified)

| Characteristics | Conditions | Typical Value | Unit |
|------------------------------------|---------------------------|---------------|------|
| Switching | | | |
| Switching Frequency | ROSC = 10.7 kΩ | 440 | kHz |
| User Selectable Frequency Range | ROSC (refer to datasheet) | 170-500 | kHz |
| Current Limit | | | |
| Cycle-by-cycle Current Limit (FET) | - | 18 | A |
| Protections | | | |
| Maximum Duty Cycle | - | 0.83 | - |
| VOOUT Undervoltage Lockout (UVLO) | VOOUT falling | 3.6 | V |
| | VOOUT rising | 4.0 | |
| Thermal Shutdown | T_A increasing | 170 | °C |

NCV887601BSTGEVB

Operational Guidelines

The evaluation board is rated to operate at full load for input voltage as low as 2.6 V at the input terminal under full power (less if output current is reduced). Start-Stop applications use reverse battery protection diodes in front of the boost converter (Figure 2), so the input source can operate down to 2.6 V plus a diode drop (i.e. ~3 V). On the cathode side of the reverse battery protection diode, electrolytic capacitors are used (e.g. 2 x 330 μ F) that serve three functions.

1. EMI filtering of the power supply input current.
2. Holdup energy to limit the Start-Stop operation dV/dt voltage sag to the boost supply.
3. When using a bench supply power source, the electrolytic capacitors decouple the power source from the boost demo board to prevent negative impedance oscillation*.

* The use of external electrolytic capacitors at the input of the evaluation board (short leads) is strongly recommended for bench testing.

Notes:

1. The IC UVLO (undervoltage lockout) is 4.0 V for VOUT rising, 3.6 V for VOUT falling (0.4 V hysteresis). The STATUS pin is powered by the IC VDRV pin on the demo board (details available from the Figure 4 schematic) to eliminate leakage current during normal battery operation. The STATUS pin has a high impedance state when in sleep-mode. STATUS pin is in a low impedance state only when the IC is awake (VOUT decreasing is below 7.3 V) and not in UVLO.

2. Limit time spent with the power supply operating at minimum input voltage (equivalent to VIN = 2.6 V) to avoid overheating the power semiconductors.

First Time Power-Up:

1. Connect a DC2 input voltage (15 A capable) set to a voltage of 12.0 V as shown in Figure 2. DC1 is not used in this test.
2. Connect a 3.6 A load on the output. If a load resistor is used, it is recommended to start from a DC2 input voltage of 8.5-9.0 V to avoid overstressing the PCB boost diode (D1, rated 4 A).
3. Decrease the DC input voltage until the PCB VIN voltage is less than that of the output. Verify that the unit is regulating at VOUT = 6.8 V.
4. Reduce the power source voltage until the PCB VIN = 2.6 V. Verify that the unit is regulating at VOUT = 6.8 V.

Start-Stop Voltage Transient Test:

1. Connect both DC1 and DC2 input power supplies as illustrated in Figure 2. Adjust DC2 so that PCB VIN = 2.6 V for a 3.6 A load.
2. Connect a 3.6 A load on the output. If a load resistor is used, it is recommended to start from a DC1 input voltage of 8.5-9.0 V to avoid overstressing the PCB boost diode (D1, rated 4 A).
3. Monitor VOUT. Disconnect supply DC1. VOUT should have a response similar to that of Figure 3.

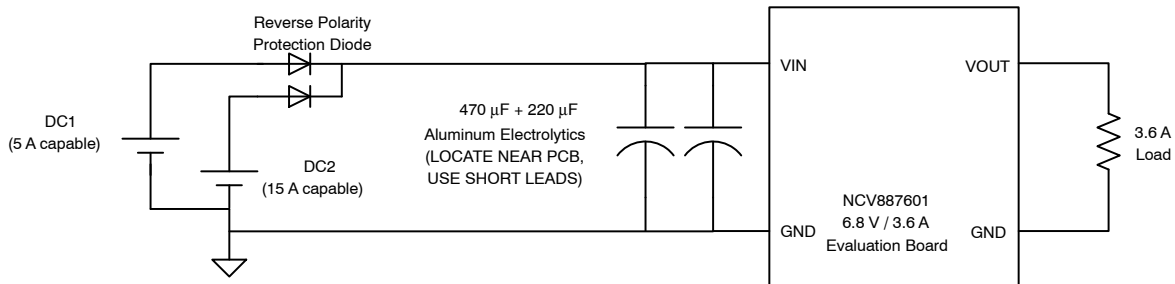


Figure 2. Evaluation Board Connections

NCV887601BSTGEVB

Typical Performance

DC1 is disabled, then re-enabled

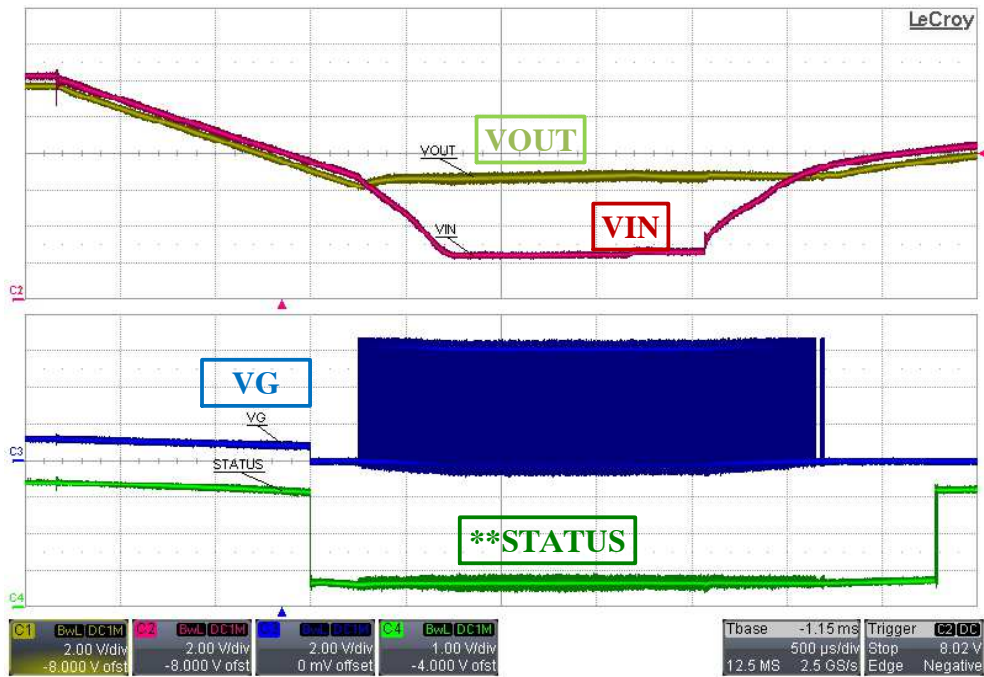


Figure 3. NCV887601 Evaluation Board Waveforms

- DC2 at VIN set to 2.6 V (after reverse polarity protection diode)
- VOUT = 6.8 V, I_{OUT} = 3.6 A
- **STATUS pin was powered using an external source

NCV887601BSTGEVB

BILL OF MATERIALS

Table 4. BILL OF MATERIALS

| Reference Designator(s) | QTY | Description | Value | Tolerance | Manufacturer | Manufacturer's Part Number |
|-------------------------|-----|---------------------------------------|-----------------|-----------|----------------------------------|----------------------------|
| C1, C12 | 2 | CAP CER 0.1UF 50V 10% X7R 0805 | 100 nF | 10% | Murata Electronics North America | GCM21BR71H104KA37L |
| C2 | 1 | CAP ALUM 56UF 50V 20% RADIAL | 56 μ F | 20% | Chemi-Con | EKZE500ELL560MF11D |
| C3 | 1 | CAP CER 1UF 16V 10% X7R 0603 | 1 μ F | 10% | Murata Electronics North America | GCM188R71C105KA64D |
| C4 | 1 | CAP CER 470PF 50V 5% NP0 0603 | 470 pF | 5% | Murata Electronics North America | GCM1885C1H471JA16D |
| C5 | 1 | CAP CER 0.033UF 50V 10% X7R 0603 | 0.033 μ F | 10% | TDK Corporation | CGA3E2X7R1H333K080AA |
| C6 | 1 | CAP CER 3300PF 50V 5% NP0 0603 | 3300 pF | 5% | TDK Corporation | CGA3E2C0G1H333J080AA |
| C7 | 1 | CAP CER 4.7UF 50V 10% X7R 1206 | 4.7 μ F | 10% | Taiyo Yuden | UMK316AB7475KL-T |
| C8, C9, C10 | 2 | CAP ALUM 100UF 35V 20% SMD | 100 μ F | 20% | Nichicon | RHS1V101MCN1GS |
| C11 | 1 | CAP CER 1UF 50V 10% X7R 1206 | 1.0 μ F | 10% | Murata Electronics North America | GCM31MR71H105KA55L |
| C13 | 1 | CAP CER 1UF 50V 10% X7R 0805 | 1.0 μ F | 10% | TDK Corporation | CGA4J3X7R1H105K125AB |
| C14 | 1 | CAP CER 100PF 50V 5% NP0 0603 | 100 pF | 5% | Murata Electronics North America | GCM1885C1H101JA16D |
| D1 | 1 | 40 V, 4.0 A Schottky Rectifier SO8-FL | 40 V / 4 A | N/A | ON Semiconductor | NRVB440MFST1G |
| D2 | 1 | DIODE ZENER 3.3V 200MW SOD323 | 3.3 V / 200 mW | N/A | ON Semiconductor | MM3Z3V3ST1G |
| L1 | 1 | INDUCTOR POWER 2.2UH 22A SMD | 2.2 μ H | 20% | Vishay Dale | IHLP5050FDER2R2M01 |
| Q1 | 1 | N-Channel Power MOSFET 60V 61A SO-8FL | 60 V / 61 A | N/A | ON Semiconductor | NVMFS5844NL |
| R1 | 1 | RES 3.01K OHM 1/10W 1% 0603 SMD | 3.01 K Ω | 1% | Vishay Dale | CRCW06033K01FKEA |
| R2 | 1 | RES 10.7K OHM 1/10W 1% 0603 SMD | 10.7 K Ω | 1% | Vishay Dale | CRCW060310K7FKEA |
| R3 | 1 | RES 0.0 OHM 1/10W JUMP 0603 SMD | 0 | Jumper | Vishay Dale | CRCW06030000Z0EA |
| R4 | 1 | RES 845 OHM 1/10W 1% 0603 SMD | 845 Ω | 1% | Vishay Dale | CRCW0603845RFKEA |
| R5 | 1 | RES 9.10K OHM 1/10W 1% 0603 SMD | 9.10 K Ω | 1% | Vishay Dale | CRCW06039K10FKEA |
| R6 | 1 | RES 8.20 OHM 1/10W 1% 0603 SMD | 8.2 Ω | 1% | Vishay Dale | CRCW06038R20FKEA |
| R8, R9 | 2 | RES 0.022 OHM 1W 5% 1206 SMD | 0.022 Ω | 5% | Panasonic Electronic Components | ERJ-8BWJR022V |
| R7 | DNP | | | | | |
| TP1, 2, 3, 4 | 4 | TERM SOLDER TURRET .219" .109"L | N/A | N/A | Mill-Max Manufacturing Corp. | 2501-2-00-44-00-00-07-0 |
| TP5 thru TP17 | 13 | PIN INBOARD .042" HOLE 1000/PKG | N/A | N/A | Vector Electronics | K24C/M |
| U1 | 1 | Automotive Non-Sync Boost Controller | N/A | N/A | ON Semiconductor | NCV887601 |

NCV887601BSTGEVB

PCB LAYOUT

NCV887601 Demo Board Rev 1
TOP Layer 07/01/2013

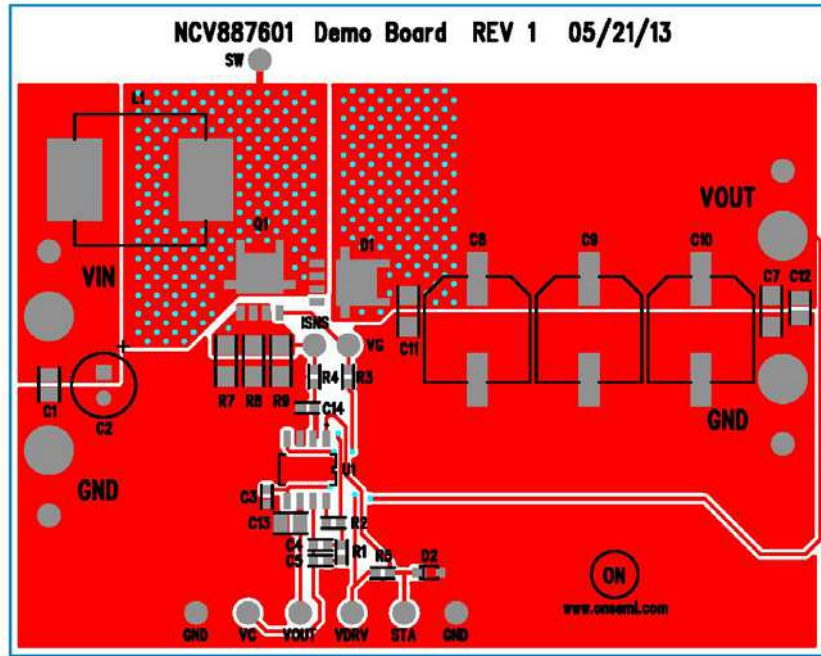


Figure 5. Top View (copper pour turned off)

NCV887601 Demo Board Rev 1
BOTTOM Layer 07/01/2013

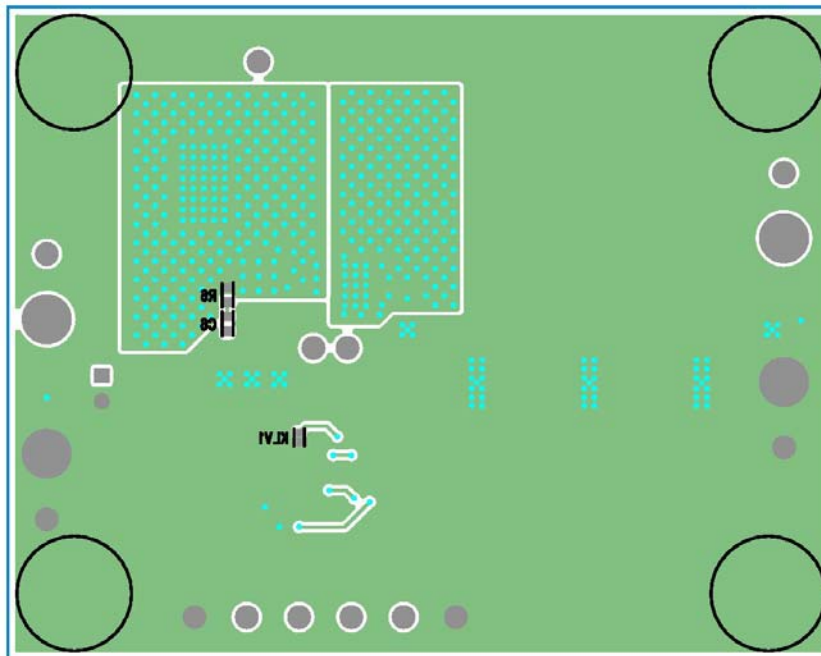



Figure 6. Bottom View (copper pour turned off)

ON Semiconductor and  are registered trademarks of Semiconductor Components Industries, LLC (SCILLC). SCILLC owns the rights to a number of patents, trademarks, copyrights, trade secrets, and other intellectual property. A listing of SCILLC's product/patent coverage may be accessed at www.onsemi.com/site/pdf/Patent-Marking.pdf. SCILLC reserves the right to make changes without further notice to any products herein. SCILLC makes no warranty, representation or guarantee regarding the suitability of its products for any particular purpose, nor does SCILLC assume any liability arising out of the application or use of any product or circuit, and specifically disclaims any and all liability, including without limitation special, consequential or incidental damages. "Typical" parameters which may be provided in SCILLC data sheets and/or specifications can and do vary in different applications and actual performance may vary over time. All operating parameters, including "Typicals" must be validated for each customer application by customer's technical experts. SCILLC does not convey any license under its patent rights nor the rights of others. SCILLC products are not designed, intended, or authorized for use as components in systems intended for surgical implant into the body, or other applications intended to support or sustain life, or for any other application in which the failure of the SCILLC product could create a situation where personal injury or death may occur. Should Buyer purchase or use SCILLC products for any such unintended or unauthorized application, Buyer shall indemnify and hold SCILLC and its officers, employees, subsidiaries, affiliates, and distributors harmless against all claims, costs, damages, and expenses, and reasonable attorney fees arising out of, directly or indirectly, any claim of personal injury or death associated with such unintended or unauthorized use, even if such claim alleges that SCILLC was negligent regarding the design or manufacture of the part. SCILLC is an Equal Opportunity/Affirmative Action Employer. This literature is subject to all applicable copyright laws and is not for resale in any manner.

PUBLICATION ORDERING INFORMATION

LITERATURE FULFILLMENT:

Literature Distribution Center for ON Semiconductor
P.O. Box 5163, Denver, Colorado 80217 USA
Phone: 303-675-2175 or 800-344-3860 Toll Free USA/Canada
Fax: 303-675-2176 or 800-344-3867 Toll Free USA/Canada
Email: orderlit@onsemi.com

N. American Technical Support: 800-282-9855 Toll Free
USA/Canada
Europe, Middle East and Africa Technical Support:
Phone: 421 33 790 2910
Japan Customer Focus Center
Phone: 81-3-5817-1050

ON Semiconductor Website: www.onsemi.com

Order Literature: <http://www.onsemi.com/orderlit>

For additional information, please contact your local
Sales Representative