



Chipsmall Limited consists of a professional team with an average of over 10 year of expertise in the distribution of electronic components. Based in Hongkong, we have already established firm and mutual-benefit business relationships with customers from,Europe,America and south Asia,supplying obsolete and hard-to-find components to meet their specific needs.

With the principle of “Quality Parts,Customers Priority,Honest Operation,and Considerate Service”,our business mainly focus on the distribution of electronic components. Line cards we deal with include Microchip,ALPS,ROHM,Xilinx,Pulse,ON,Everlight and Freescale. Main products comprise IC,Modules,Potentiometer,IC Socket,Relay,Connector.Our parts cover such applications as commercial,industrial, and automotives areas.

We are looking forward to setting up business relationship with you and hope to provide you with the best service and solution. Let us make a better world for our industry!



## Contact us

Tel: +86-755-8981 8866 Fax: +86-755-8427 6832

Email & Skype: info@chipsmall.com Web: www.chipsmall.com

Address: A1208, Overseas Decoration Building, #122 Zhenhua RD., Futian, Shenzhen, China





■ Features :

- Universal AC input/Full range
- Protections: Short circuit / Overload / Over voltage
- Cooling by free air convection
- 100% full load burn-in test
- 2 years warranty

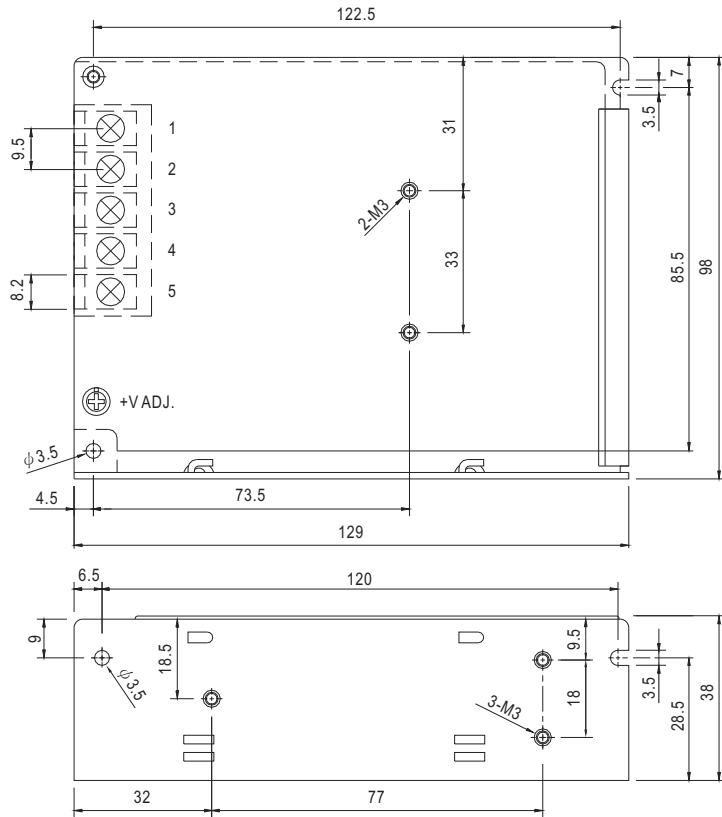


SPECIFICATION

| MODEL                 | NES-50-5  | NES-50-12   | NES-50-15    | NES-50-24     | NES-50-48    |              |
|-----------------------|---|---|--------------|---------------|--------------|--------------|
| OUTPUT                | DC VOLTAGE  | 5V  | 12V          | 15V           | 24V          | 48V          |
|                       | RATED CURRENT   | 10A   | 4.2A         | 3.4A          | 2.2A         | 1.1A         |
|                       | CURRENT RANGE   | 0 ~ 10A   | 0 ~ 4.2A     | 0 ~ 3.4A      | 0 ~ 2.2A     | 0 ~ 1.1A     |
|                       | RATED POWER   | 50W   | 50.4W        | 51W           | 52.8W        | 52.8W        |
|                       | RIPPLE & NOISE (max.) Note.2  | 80mVp-p   | 120mVp-p     | 150mVp-p      | 200mVp-p     | 240mVp-p     |
|                       | VOLTAGE ADJ. RANGE  | 4.75 ~ 5.5V   | 10.8 ~ 13.2V | 13.5 ~ 16.5V  | 21.6 ~ 26.4V | 43.2 ~ 52.8V |
|                       | VOLTAGE TOLERANCE Note.3  | ±2.0%   | ±1.0%        | ±1.0%         | ±1.0%        | ±1.0%        |
|                       | LINE REGULATION Note.4  | ±0.5%   | ±0.5%        | ±0.5%         | ±0.5%        | ±0.5%        |
|                       | LOAD REGULATION Note.5  | ±0.5%   | ±0.5%        | ±0.5%         | ±0.5%        | ±0.5%        |
|                       | SETUP, RISE TIME  | 500ms, 30ms/230VAC      1200ms, 30ms/115VAC at full load  |              |               |              |              |
| HOLD UP TIME (Typ.)   | 50ms/230VAC      10ms/115VAC at full load   |   |              |               |              |              |
| INPUT                 | VOLTAGE RANGE   | 85 ~ 264VAC      120 ~ 370VDC   |              |               |              |              |
|                       | FREQUENCY RANGE   | 47 ~ 63Hz   |              |               |              |              |
|                       | EFFICIENCY(Typ.)  | 79%   | 82%          | 83%           | 86%          | 87%          |
|                       | AC CURRENT (Typ.)   | 1.1A/115VAC      0.65A/230VAC   |              |               |              |              |
|                       | INRUSH CURRENT (Typ.)   | COLD START 45A  |              |               |              |              |
|                       | LEAKAGE CURRENT   | <2mA / 240VAC   |              |               |              |              |
| PROTECTION            | OVERLOAD  | 110 ~ 150% rated output power<br>Protection type : Hiccup mode, recovers automatically after fault condition is removed |              |               |              |              |
|                       | OVER VOLTAGE  | 5.75 ~ 6.75V  | 13.8 ~ 16.2V | 17.25 ~ 20.25 | 27.6 ~ 32.4V | 55.2 ~ 64.8V |
|                       |   | Protection type : Shut down o/p voltage, re-power on to recover   |              |               |              |              |
| ENVIRONMENT           | WORKING TEMP.   | -20 ~ +60°C (Refer to "Derating Curve")   |              |               |              |              |
|                       | WORKING HUMIDITY  | 20 ~ 90% RH non-condensing  |              |               |              |              |
|                       | STORAGE TEMP., HUMIDITY   | -40 ~ +85°C, 10 ~ 95% RH  |              |               |              |              |
|                       | TEMP. COEFFICIENT   | ±0.03%/°C (0 ~ 45°C)  |              |               |              |              |
|                       | VIBRATION   | 10 ~ 500Hz, 2G 10min./1cycle, period for 60min. each along X, Y, Z axes   |              |               |              |              |
| SAFETY & EMC (Note 7) | SAFETY STANDARDS Note.6   | UL60950-1, CB(IEC60950-1),CCC GB4943.1:2011 approved  |              |               |              |              |
|                       | WITHSTAND VOLTAGE   | I/P-O/P:3KVAC    I/P-FG:2KVAC    O/P-FG:0.5KVAC   |              |               |              |              |
|                       | ISOLATION RESISTANCE  | I/P-O/P, I/P-FG, O/P-FG:100M Ohms / 500VDC / 25°C/ 70% RH   |              |               |              |              |
|                       | EMC EMISSION  | Compliance to EN55022 (CISPR22) Class B, EN61000-3-2,-3   |              |               |              |              |
|                       | EMC IMMUNITY  | Compliance to EN61000-4-2,3,4,5,6,8,11, EN55024, EN61000-6-1, light industry level, criteria A                          |              |               |              |              |
| OTHERS                | MTBF  | 374.2K hrs min.    MIL-HDBK-217F (25°C)   |              |               |              |              |
|                       | DIMENSION   | 129*98*38mm (L*W*H)   |              |               |              |              |
|                       | PACKING   | 0.41Kg; 30pcs/13.3Kg/0.72CUFT   |              |               |              |              |
| NOTE                  | <p>1. All parameters NOT specially mentioned are measured at 230VAC input, rated load and 25°C of ambient temperature.</p> <p>2. Ripple &amp; noise are measured at 20MHz of bandwidth by using a 12" twisted pair-wire terminated with a 0.1uf &amp; 47uf parallel capacitor.</p> <p>3. Tolerance : includes set up tolerance, line regulation and load regulation.</p> <p>4. Line regulation is measured from low line to high line at rated load.</p> <p>5. Load regulation is measured from 0% to 100% rated load.</p> <p>6. For the request of GB4943.1,the power supply is only suitable for use in the altitude 2000m below and the non tropical climate condition.</p> <p>7. The power supply is considered a component which will be installed into a final equipment. The final equipment must be re-confirmed that it still meets EMC directives. For guidance on how to perform these EMC tests, please refer to "EMI testing of component power supplies." (as available on <a href="http://www.meanwell.com">http://www.meanwell.com</a>)</p> |   |              |               |              |              |

■ Mechanical Specification

Case No. 903 Unit:mm

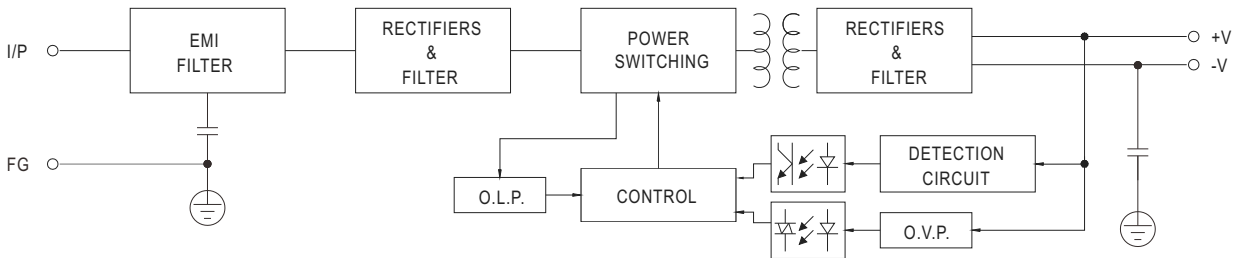


Terminal Pin No. Assignment

| Pin No. | Assignment | Pin No. | Assignment   |
|---------|------------|---------|--------------|
| 1       | AC/L       | 4       | DC OUTPUT -V |
| 2       | AC/N       | 5       | DC OUTPUT +V |
| 3       | FG         |         |              |

■ Block Diagram

fosc : 60KHz



■ Derating Curve

■ Output Derating VS Input Voltage

