



Chipsmall Limited consists of a professional team with an average of over 10 year of expertise in the distribution of electronic components. Based in Hongkong, we have already established firm and mutual-benefit business relationships with customers from,Europe,America and south Asia,supplying obsolete and hard-to-find components to meet their specific needs.

With the principle of “Quality Parts,Customers Priority,Honest Operation,and Considerate Service”,our business mainly focus on the distribution of electronic components. Line cards we deal with include Microchip,ALPS,ROHM,Xilinx,Pulse,ON,Everlight and Freescale. Main products comprise IC,Modules,Potentiometer,IC Socket,Relay,Connector.Our parts cover such applications as commercial,industrial, and automotives areas.

We are looking forward to setting up business relationship with you and hope to provide you with the best service and solution. Let us make a better world for our industry!



Contact us

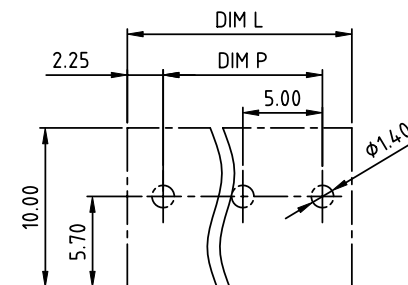
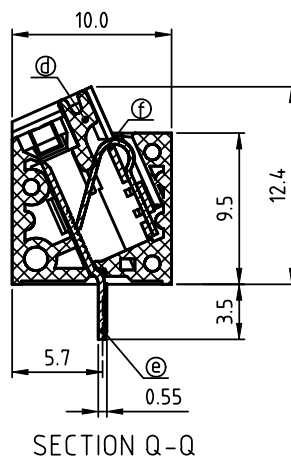
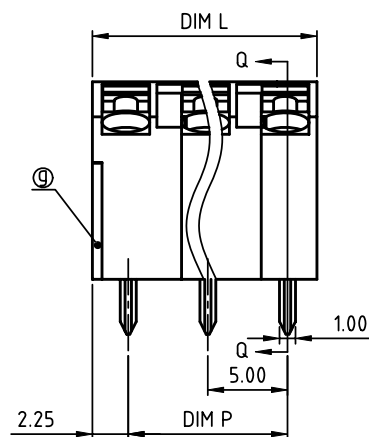
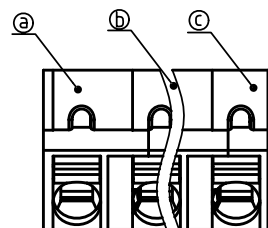
Tel: +86-755-8981 8866 Fax: +86-755-8427 6832

Email & Skype: info@chipsmall.com Web: www.chipsmall.com

Address: A1208, Overseas Decoration Building, #122 Zhenhua RD., Futian, Shenzhen, China



PRODUCT NUMBER	PITCH
NHxx70x000J0G	5.00mm


 RECOMMENDED P.C.B LAYOUT
 TOP VIEW

Material:

- Item a Terminal with cover of body: Thermoplastic (UL94V-0)
- Item b Terminal normal body: Thermoplastic (UL94V-0)
- Item c Terminal side body: Thermoplastic (UL94V-0)
- Item d Terminal lever: Thermoplastic (UL94V-0) Orange(RAL2011/P)
- Item e Female Contact: Brass. Tin Plated.
- Item f Spring clamp: Stainless steel
- Item g Terminal cover: Thermoplastic (UL94V-0)

Electrical:

- Voltage rating: 300 V
- Current rating: 10A
- Wire range:
- Solid wire(AWG): 16-26
- Stranded wire(AWG): 16-26
- Wire strip length: 8-9 mm
- Withstanding Voltage: 1.6 KV
- Operating temperature: -40°C to +115°C
- Soldering temperature: 260°C ±5°C/5 Sec
- Safety Approval: cULus

N=Number of poles

$$\text{Dim L} = (N-1) \times 5.0 + 4.1$$

$$\text{Dim P} = (N-1) \times 5.0$$

POLES	DIM L	DIM P
1p	±0.10	
2p-6p	±0.10	±0.10
7p-12p	±0.20	±0.20
13p-18p	±0.30	±0.30
19p-24p	±0.40	±0.40

PART NO.: NH xx 70 x 000J0 G

No. of poles	Color	RoHS compliant
0	Black (RAL9005)	(lead<4%)
End Stackable	2 Red (RAL3001/D)	In copper Alloy
01 1 poles	3 Orange(RAL2011/P)	
02 2 poles	4 Yellow(RAL1018/A)	
...	5 Green(RAL6018/T)	
24 24 poles	6 Blue (RAL5015/A)	
	8 Grey(RAL7004/P)	
	9 White(RAL1102)	
C	Multiple colors	

mat'l. code				surface	tolerance	projection	product family			
ltr ecn no dr date				ASME Y14.5	ASME Y14.5		TERMINAL BLOCK			
				tolerances unless otherwise specified			title			
				angles	mm		TERMINAL BLOCK			
				mm	mm		SPRING CLAMP, 66D WIRE INLET			
				X°±1°	X.XX±0.1	scale	dwg no sheet 1 of 1 size			
				dr	EVIN ZHONG	060314	NHxx70x000J0G			
				enr	EVIN ZHONG	060314	A4			
				chr	HANKE FENG	060314	CUSTOMER Drawing			
				appd	SHI JUN	060314				
sheet index	revision	A	1							