



Chipsmall Limited consists of a professional team with an average of over 10 year of expertise in the distribution of electronic components. Based in Hongkong, we have already established firm and mutual-benefit business relationships with customers from,Europe,America and south Asia,supplying obsolete and hard-to-find components to meet their specific needs.

With the principle of "Quality Parts,Customers Priority,Honest Operation,and Considerate Service",our business mainly focus on the distribution of electronic components. Line cards we deal with include Microchip,ALPS,ROHM,Xilinx,Pulse,ON,Everlight and Freescale. Main products comprise IC,Modules,Potentiometer,IC Socket,Relay,Connector.Our parts cover such applications as commercial,industrial, and automotives areas.

We are looking forward to setting up business relationship with you and hope to provide you with the best service and solution. Let us make a better world for our industry!



Contact us

Tel: +86-755-8981 8866 Fax: +86-755-8427 6832

Email & Skype: info@chipsmall.com Web: www.chipsmall.com

Address: A1208, Overseas Decoration Building, #122 Zhenhua RD., Futian, Shenzhen, China



NHD-5.7B-LED Driver

LED Backlight Driver

RoHS Compliant

Newhaven Display International, Inc.

2661 Galvin Ct.

Elgin IL, 60124

Ph: 847-844-8795 Fax: 847-844-8796

www.newhavendisplay.com

nhtech@newhavendisplay.com

nhsales@newhavendisplay.com

Document Revision History

Revision	Date	Description	Changed by
0	07/28/2010	Initial Release	MC
1	6/1/16	Mechanical Drawing Updated	SB

Functions and Features

- HIMAX HA7101 LED Driver
- PWM control backlight brightness with Enable pin
- 5V power supply input for 9.9V output, for **NHD-5.7-320240WFB** series displays

ELECTRICAL CHARACTERISTICS

Parameter	Symbol	Condition	Min	Typ	Max	Unit
Operating Temperature Range	-	Absolute Max	-20	25	85	°C
Storage Temperature Range	-	Absolute Max	-30	25	100	°C
Input Voltage	Vin	-	3.3	5.0	5.5	V
Input Current (no load)	-	Vin=5V	-	1.2	-	mA
Input Current (with load)	-	Vin=5V	-	480	-	mA
Output Current	Iout	Vin=5V	-	140	-	mA
Output Voltage	Vout	Vin=5V	-	9.9	-	V

J1 Pin Description (user input)

Pin No.	Symbol	External Connection	Function Description
1	VCC	Power Supply	Supply Voltage for LED driver circuit
2	E	MPU	Enable input (PWM signal)
3	GND	Power Supply	Ground for LED driver circuit

Connector: **M125PR-03**

Recommended mating connector: **M125H-03** http://www.newhavendisplays.com/app_notes/M125H-03.pdf

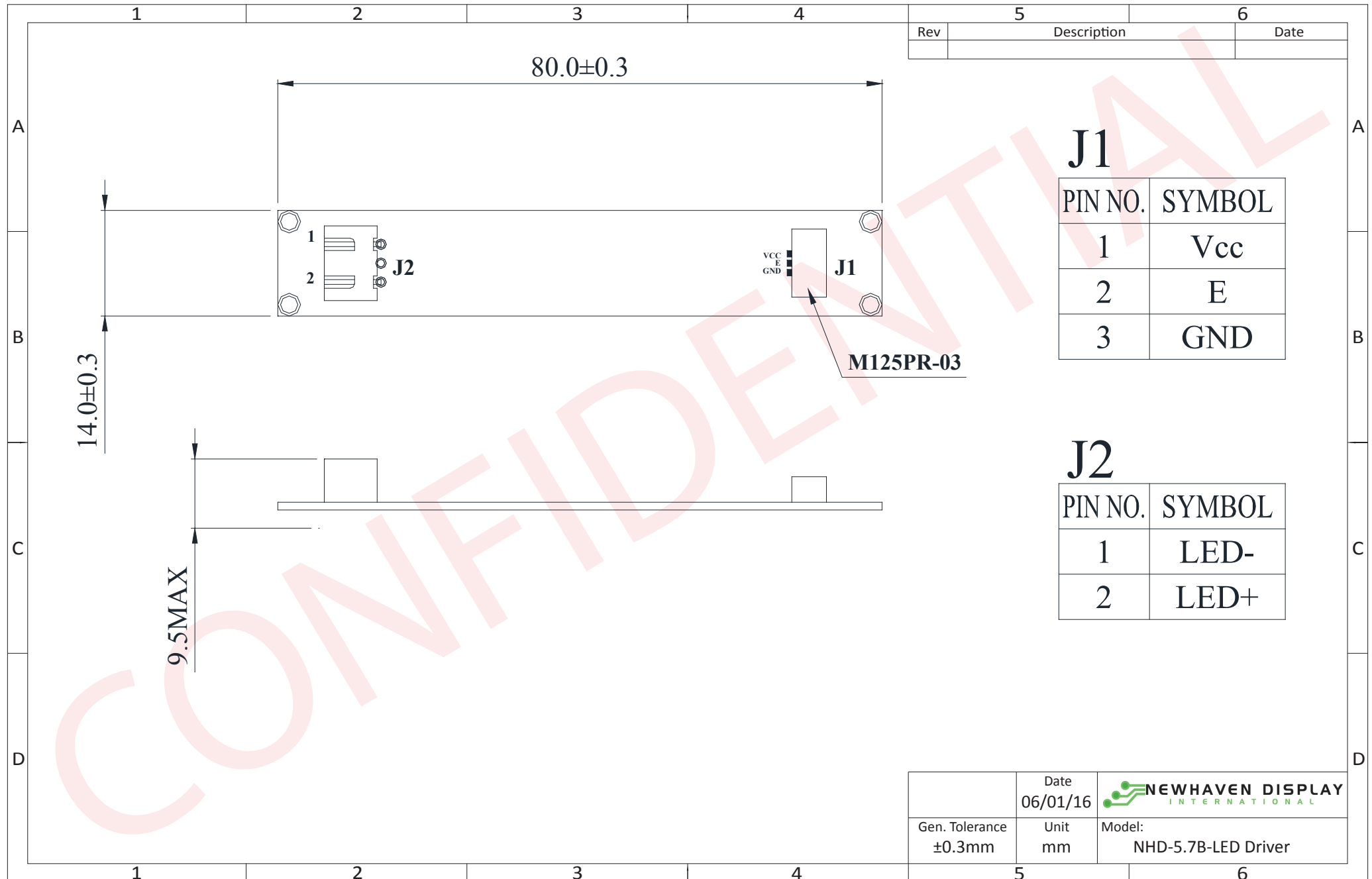
J2 Pin Description (output)

Pin No.	Symbol	External Connection	Function Description
1	LED-	K	Ground for LED backlight
2	LED+	A	Power for LED backlight

Connector: **S 3B-XH-A**

Connector on display backlight: **XHP-3**

Mechanical Drawing




Rev	Description	Date

J1

PIN NO.	SYMBOL
1	Vcc
2	E
3	GND

J2

PIN NO.	SYMBOL
1	LED-
2	LED+

	Date 06/01/16	 NEWHAVEN DISPLAY <small>INTERNATIONAL</small>
Gen. Tolerance ± 0.3 mm	Unit mm	

The drawing contained herein is the exclusive property of Newhaven Display International, Inc. and shall not be copied, reproduced, and/or disclosed in any format without permission.