



Chipsmall Limited consists of a professional team with an average of over 10 year of expertise in the distribution of electronic components. Based in Hongkong, we have already established firm and mutual-benefit business relationships with customers from,Europe,America and south Asia,supplying obsolete and hard-to-find components to meet their specific needs.

With the principle of “Quality Parts,Customers Priority,Honest Operation,and Considerate Service”,our business mainly focus on the distribution of electronic components. Line cards we deal with include Microchip,ALPS,ROHM,Xilinx,Pulse,ON,Everlight and Freescale. Main products comprise IC,Modules,Potentiometer,IC Socket,Relay,Connector.Our parts cover such applications as commercial,industrial, and automotives areas.

We are looking forward to setting up business relationship with you and hope to provide you with the best service and solution. Let us make a better world for our industry!



Contact us

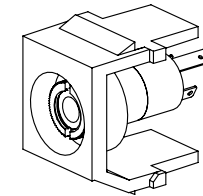
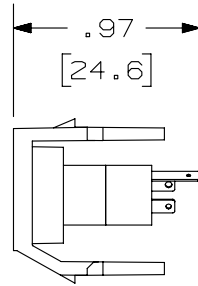
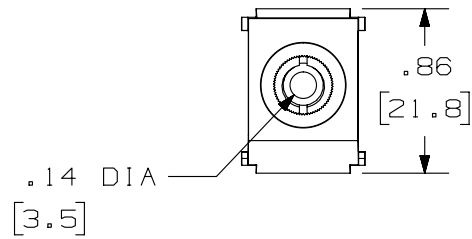
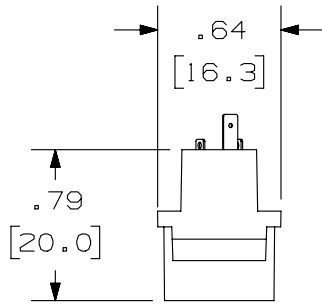
Tel: +86-755-8981 8866 Fax: +86-755-8427 6832

Email & Skype: info@chipsmall.com Web: www.chipsmall.com

Address: A1208, Overseas Decoration Building, #122 Zhenhua RD., Futian, Shenzhen, China



THIS COPY IS PROVIDED ON A RESTRICTED BASIS AND IS NOT TO BE USED IN ANY WAY DETRIMENTAL TO THE INTERESTS OF PANDUIT CORP.



PANDUIT P/N	WEIGHT
NK35MSS**	.08 LB/10 PCS (37.0 g/10 PCS)

NOTES:

1. SEE CURRENT CATALOG FOR ADDITIONAL PART NUMBER SUFFIXES TO INDICATE COLOR AND OR PACKAGE QUANTITY.
2. SEE CATALOG FOR COMPLETE LIST OF PARTS APPLICABLE FOR USE WITH THIS PART.
3. DIMENSIONS IN PARENTHESES ARE IN METRIC.
4. PART INCLUDES:
1- KEYSTONE MODULE BASE
1- 3.5mm (1/8") SOLDER TYPE HEADPHONE JACK (ASSEMBLED TO MODULE BASE)



PART NUMBER		NK35MSS**	
TITLE			
NETKEY 3.5MM (1/8") SOLDER TYPE HEADPHONE JACK		MODULE	
CUSTOMER DRAWING			
ITEM REVISION NAME		M02201AC/00	
DATASET FILE NAME		M02201AC_DC08/00B	
UNLESS OTHERWISE SPECIFIED, DIMENSIONAL TOLERANCES ARE: IN [mm]		MATERIAL:	
.X ± .xxx ± .010 [.3]		MODULE: ABS	
.xx ± .03 [.8]		CONNECTOR: PBT	
ANGLES ±		DRAWING NUMBER:	
		02201-08	
DRAWN BY	DATE	CHK	SCALE
JSP	4-13-05	EB	NONE
SHT 1 OF 1		SIZE	
A		A	

REV	DATE	BY	CHK	APR	DESCRIPTION	ECN
1	5-09-14	MDJR	REFR	MMR	A. UPDATED TITLE BLOCK.	02201-08
R	4-13-05	JSP	EB	EB	RELEASED TO PRODUCTION	02201-08

D10100DA/14