



Chipsmall Limited consists of a professional team with an average of over 10 year of expertise in the distribution of electronic components. Based in Hongkong, we have already established firm and mutual-benefit business relationships with customers from,Europe,America and south Asia,supplying obsolete and hard-to-find components to meet their specific needs.

With the principle of “Quality Parts,Customers Priority,Honest Operation,and Considerate Service”,our business mainly focus on the distribution of electronic components. Line cards we deal with include Microchip,ALPS,ROHM,Xilinx,Pulse,ON,Everlight and Freescale. Main products comprise IC,Modules,Potentiometer,IC Socket,Relay,Connector.Our parts cover such applications as commercial,industrial, and automotives areas.

We are looking forward to setting up business relationship with you and hope to provide you with the best service and solution. Let us make a better world for our industry!



Contact us

Tel: +86-755-8981 8866 Fax: +86-755-8427 6832

Email & Skype: info@chipsmall.com Web: www.chipsmall.com

Address: A1208, Overseas Decoration Building, #122 Zhenhua RD., Futian, Shenzhen, China



ST mbed Cellular Development Kit

NimbeLink Plug-in Cellular Shield for the Nucleo-F401RE

The cellular development kit provides an affordable, flexible way to build connected prototypes using the STM32 F4. For applications requiring cellular connectivity, the NimbeLink CDMA & GSM shield plugs into the Nucleo development board and, in turn, accepts a plug-in NimbeLink Skywire certified cellular modem, providing quick cellular access. This first-in-the-industry plug-in cellular solution is easier and more compact than USB or other modem connection options, and the certified Skywire embedded modem eliminates the cost and complexity of obtaining carrier certifications.

The NimbeLink shield comes with four integrated ST sensors for easy proof-of-concept development. Sensors include:

- 3- axis accelerometer – LIS3DH
- temperature – STLM75
- atmospheric pressure – LPS331AP
- humidity – HTS221

This kit provides a SSL secured, cellular connection from sensor to cloud. Your sensor data can be viewed on a Bug-Labs freeboard dashboard including device location based on cellular triangulation.

The kit utilizes mbed software for an easy out-of-box, cellular solution.

The shield also provides standard Arduino headers. These accept any of hundreds of compatible expansion boards allowing the addition of capabilities like GPS, LCD displays, motor controllers, and more. The kit includes a 12v DC power supply and antenna.

Contact a NimbeLink Sales Professional

612-285-3433

Email Us

Sales@NimbeLink.com

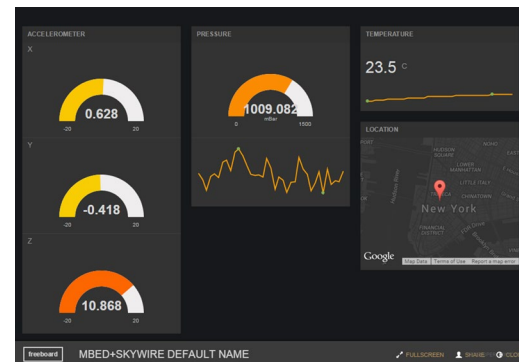
Online

www.NimbeLink.com

Product/Solution Brief



Part Numbers	Description
NL-AB-ST-NCL	ST mbed Cellular Development Kit



Freeboard Dashboard Screenshot