



Chipsmall Limited consists of a professional team with an average of over 10 year of expertise in the distribution of electronic components. Based in Hongkong, we have already established firm and mutual-benefit business relationships with customers from,Europe,America and south Asia,supplying obsolete and hard-to-find components to meet their specific needs.

With the principle of “Quality Parts,Customers Priority,Honest Operation,and Considerate Service”,our business mainly focus on the distribution of electronic components. Line cards we deal with include Microchip,ALPS,ROHM,Xilinx,Pulse,ON,Everlight and Freescale. Main products comprise IC,Modules,Potentiometer,IC Socket,Relay,Connector.Our parts cover such applications as commercial,industrial, and automotives areas.

We are looking forward to setting up business relationship with you and hope to provide you with the best service and solution. Let us make a better world for our industry!



Contact us

Tel: +86-755-8981 8866 Fax: +86-755-8427 6832

Email & Skype: info@chipsmall.com Web: www.chipsmall.com

Address: A1208, Overseas Decoration Building, #122 Zhenhua RD., Futian, Shenzhen, China



NLP110 Series

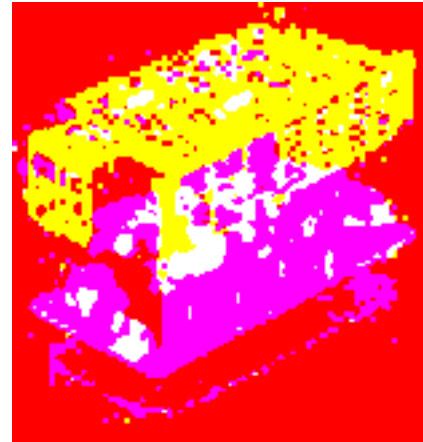
Cover accessory kit

LOW TO MEDIUM POWER AC/DC POWER SUPPLIES

1

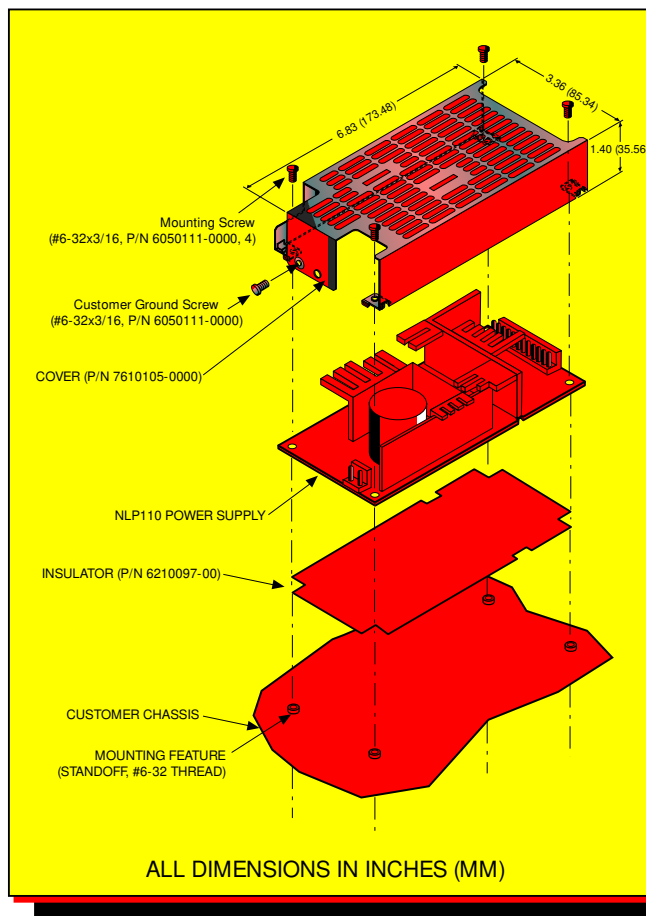
- Mount-on cover
- Easy to install
- No additional screws needed
- Complies with UL and VDE safety standards *
- Mounting bracket kit also available

The NLP110 series is available with a mount-on cover accessory kit to facilitate flexible customer installation. The mount-on cover installation is independent of the power supply mounting position thus offering various mounting options to the customer and comes complete with mounting and grounding screws plus an insulator. The cover is installed directly to the power supply PCB allowing the power supply to be mounted either on the NLP110 mounting bracket or on the customer's system chassis. The mounting bracket and cover kit are sold as separate items to retain their inherent flexibility. Details of the mounting bracket assembly kit are available on our website. The NLP110 mount-on cover is flexible, easy to install and is suitable for applications that require power supply installation options with minimum mechanical work for the system designer.



2 YEAR WARRANTY

SNAP-ON COVER KIT



MODEL NUMBER: NLP110C

Materials

- 1 Cover
- 1 Insulator
- 4 Mounting screws #6-32 x 3/16 inch
- 1 Installation instructions

Assembly Notes

- 1 Before assembly, ensure unit was turned off for at least 10 minutes.
- 2 Ensure that the insulator is correctly fitted in the customer chassis under the PCB to maintain safety creepage and clearances.
- 3 Position the power supply onto the customer chassis aligning the PCB assembly mounting holes with the 4 stand-offs on the chassis. Orientation of PCB assembly relative to the chassis must be as shown in the drawing opposite.
- 4 Put the cover on the PCB with orientation as shown in the drawing opposite.
- 5 Secure both the cover and the power supply with 4 screws through the holes as shown on the drawing opposite.
- 6 'Earth'* grounding can be:
 - (a) Through system chassis when system chassis connected to the 'earth'.
 - (b) Through power supply cover. Connect 'earth' to cover as shown on drawing opposite.
- 7 When a cover or other sheetmetal option is added, it is the user's responsibility to ensure that the requirements of the relevant safety agency, or agencies, are complied with.

* When installed follow the 'installation instructions'.

Data Sheet © Artesyn Technologies® 2002

The information and specifications contained in this data sheet are believed to be correct at time of publication. However, Artesyn Technologies accepts no responsibility for consequences arising from printing errors or inaccuracies. Specifications are subject to change without notice. No rights under any patent accompany the sale of any such product(s) or information contained herein.