



Chipsmall Limited consists of a professional team with an average of over 10 year of expertise in the distribution of electronic components. Based in Hongkong, we have already established firm and mutual-benefit business relationships with customers from,Europe,America and south Asia,supplying obsolete and hard-to-find components to meet their specific needs.

With the principle of “Quality Parts,Customers Priority,Honest Operation,and Considerate Service”,our business mainly focus on the distribution of electronic components. Line cards we deal with include Microchip,ALPS,ROHM,Xilinx,Pulse,ON,Everlight and Freescale. Main products comprise IC,Modules,Potentiometer,IC Socket,Relay,Connector.Our parts cover such applications as commercial,industrial, and automotives areas.

We are looking forward to setting up business relationship with you and hope to provide you with the best service and solution. Let us make a better world for our industry!



Contact us

Tel: +86-755-8981 8866 Fax: +86-755-8427 6832

Email & Skype: info@chipsmall.com Web: www.chipsmall.com

Address: A1208, Overseas Decoration Building, #122 Zhenhua RD., Futian, Shenzhen, China



NLX1G74

Single D Flip-Flop

The NLX1G74 is a high performance, full function edge-triggered D Flip-Flop in ultra-small footprint. The NLX1G74 input structures provide protection when voltages up to 7.0 V are applied, regardless of the supply voltage.

Features

- Extremely High Speed: $t_{PD} = 2.6$ ns (typical) at $V_{CC} = 5.0$ V
- Designed for 1.65 V to 5.5 V V_{CC} Operation
- Low Power Dissipation: $I_{CC} = 1$ μ A (Max) at $T_A = 25^\circ$ C
- 24 mA Balanced Output Sink and Source Capability at $V_{CC} = 3.0$ V
- Balanced Propagation Delays
- Overvoltage Tolerant (OVT) Input Pins
- Ultra Small Package
- NLV Prefix for Automotive and Other Applications Requiring Unique Site and Control Change Requirements; AEC-Q100 Qualified and PPAP Capable
- This is a Pb-Free Device

TRUTH TABLE

| Inputs | | | | Outputs | | Operating Mode |
|--------|-----|------------|---|---------|-----------|--|
| PR | CLR | CP | D | Q | \bar{Q} | |
| L | H | X | X | H | L | Asynchronous Set Asynchronous Clear Undetermined |
| H | L | X | X | L | H | |
| L | L | X | X | H | H | |
| H | H | \uparrow | h | H | L | Load and Read Register |
| H | H | \uparrow | l | L | H | |
| H | H | \uparrow | X | NC | NC | Hold |

- H = High Voltage Level
 h = High Voltage Level One Setup Time Prior to the Low-to-High Clock Transition
 L = Low Voltage Level
 l = Low Voltage Level One Setup Time Prior to the Low-to-High Clock Transition
 NC = No Change
 X = High or Low Voltage Level and Transitions are Acceptable
 \uparrow = Low-to-High Transition
 \updownarrow = Not a Low-to-High Transition

For I_{CC} reasons, DO NOT FLOAT Inputs



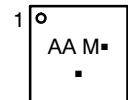
ON Semiconductor®

<http://onsemi.com>



UQFN8
 MU SUFFIX
 CASE 523AN

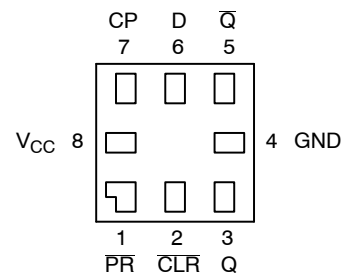
MARKING DIAGRAM



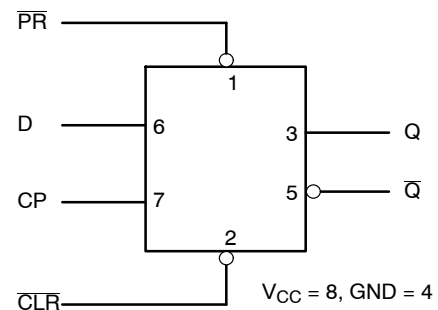
AA = Device Code
 M = Date Code*
 ■ = Pb-Free Package

(Note: Microdot may be in either location)

PINOUT DIAGRAM



LOGIC DIAGRAM



ORDERING INFORMATION

See detailed ordering and shipping information in the package dimensions section on page 2 of this data sheet.

NLX1G74

MAXIMUM RATINGS

| Symbol | Parameter | Value | Unit |
|------------------|--|------------------------------|------|
| V _{CC} | DC Supply Voltage | -0.5 to +7.0 | V |
| V _I | DC Input Voltage | -0.5 to +7.0 | V |
| V _O | DC Output Voltage – Output in High or Low State (Note 1) | -0.5 to V _{CC} +0.5 | V |
| I _{IK} | DC Input Diode Current V _I < GND | -50 | mA |
| I _{OK} | DC Output Diode Current V _O < GND | -50 | mA |
| I _O | DC Output Sink Current | ±50 | mA |
| I _{CC} | DC Supply Current Per Supply Pin | ±100 | mA |
| I _{GND} | DC Ground Current Per Ground Pin | ±100 | mA |
| T _{STG} | Storage Temperature Range | -65 to +150 | °C |
| T _L | Lead Temperature, 1 mm from Case for 10 Seconds | 260 | °C |
| T _J | Junction Temperature Under Bias | +150 | °C |
| θ _{JA} | Thermal Resistance (Note 2) | 250 | °C/W |
| P _D | Power Dissipation in Still Air at 85°C | 250 | mW |
| MSL | Moisture Sensitivity | Level 1 | |
| F _R | Flammability Rating Oxygen Index: 28 to 34 | UL 94 V-0 @ 0.125 in | |
| V _{ESD} | ESD Withstand Voltage Human Body Model (Note 3) Machine Model (Note 4) Charged Device Model (Note 5) | >2000 >200 N/A | V |

Stresses exceeding Maximum Ratings may damage the device. Maximum Ratings are stress ratings only. Functional operation above the Recommended Operating Conditions is not implied. Extended exposure to stresses above the Recommended Operating Conditions may affect device reliability.

1. I_O absolute maximum rating must be observed.
2. Measured with minimum pad spacing on an FR4 board, using 10 mm X 1 inch, 2 ounce copper trace with no air flow.
3. Tested to EIA/JESD22-A114-A.
4. Tested to EIA/JESD22-A115-A.
5. Tested to JESD22-C101-A.

RECOMMENDED OPERATING CONDITIONS

| Symbol | Parameter | Min | Max | Unit |
|-----------------|--|-------------|-----------------|------|
| V _{CC} | Supply Voltage Operating Data Retention Only | 1.65 1.5 | 5.5 5.5 | V |
| V _I | Input Voltage (Note 6) | 0 | 5.5 | V |
| V _O | Output Voltage (HIGH or LOW State) | 0 | V _{CC} | V |
| T _A | Operating Free-Air Temperature | -40 | +85 | °C |
| Δt/ΔV | Input Transition Rise or Fall Rate V _{CC} = 2.5 V ±0.2 V V _{CC} = 3.0 V ±0.3 V V _{CC} = 5.0 V ±0.5 V | 0 0 0 | 20 10 5.0 | ns/V |

6. Unused inputs may not be left open. All inputs must be tied to a high-logic voltage level or a low-logic input voltage level.

ORDERING INFORMATION

| Device | Package | Shipping† |
|----------------|--------------------|--------------------|
| NLX1G74MUTCG | UQFN8 (Pb-Free) | 3000 / Tape & Reel |
| NLVX1G74MUTCG* | UQFN8 (Pb-Free) | 3000 / Tape & Reel |

†For information on tape and reel specifications, including part orientation and tape sizes, please refer to our Tape and Reel Packaging Specifications Brochure, BRD8011/D.

*NLV Prefix for Automotive and Other Applications Requiring Unique Site and Control Change Requirements; AEC-Q100 Qualified and PPAP Capable.

NLX1G74

DC ELECTRICAL CHARACTERISTICS

| Symbol | Parameter | Condition | V _{CC} (V) | T _A = 25°C | | | -40°C ≤ T _A ≤ 85°C | | Unit |
|------------------|---|--|------------------------|-----------------------|-----------------|----------------------|-------------------------------|----------------------|------|
| | | | | Min | Typ | Max | Min | Max | |
| V _{IH} | High-Level Input Voltage | | 1.65 | 0.75 V _{CC} | | | 0.75 V _{CC} | | V |
| | | | 2.3 to 5.5 | 0.7 V _{CC} | | | 0.7 V _{CC} | | |
| V _{IL} | Low-Level Input Voltage | | 1.65 | | | 0.25 V _{CC} | | 0.25 V _{CC} | V |
| | | | 2.3 to 5.5 | | | 0.3 V _{CC} | | 0.3 V _{CC} | |
| V _{OH} | High-Level Output Voltage V _{IN} = V _{IL} or V _{IL} | I _{OH} = 100 μA | 1.65 to 5.5 | V _{CC} - 0.1 | V _{CC} | | V _{CC} - 0.1 | | V |
| | | I _{OH} = -3 mA | 1.65 | 1.29 | 1.52 | | 1.29 | | |
| | | I _{OH} = -8 mA | 2.3 | 1.9 | 2.1 | | 1.9 | | |
| | | I _{OH} = -12 mA | 2.7 | 2.2 | 2.4 | | 2.2 | | |
| | | I _{OH} = -16 mA | 3.0 | 2.4 | 2.7 | | 2.4 | | |
| | | I _{OH} = -24 mA | 3.0 | 2.3 | 2.5 | | 2.3 | | |
| | | I _{OH} = -32 mA | 4.5 | 3.8 | 4.0 | | 3.8 | | |
| V _{OL} | Low-Level Output Voltage V _{IN} = V _{IH} | I _{OL} = 100 μA | 1.65 to 5.5 | | 0.008 | 0.1 | | 0.1 | V |
| | | I _{OL} = 3 mA | 1.65 | | 0.10 | 0.24 | | 0.24 | |
| | | I _{OL} = 8 mA | 2.3 | | 0.12 | 0.3 | | 0.3 | |
| | | I _{OL} = 12 mA | 2.7 | | 0.15 | 0.4 | | 0.4 | |
| | | I _{OL} = 16 mA | 3.0 | | 0.19 | 0.4 | | 0.4 | |
| | | I _{OL} = 24 mA | 3.0 | | 0.30 | 0.55 | | 0.55 | |
| | | I _{OL} = 32 mA | 4.5 | | 0.30 | 0.55 | | 0.55 | |
| I _{IN} | Input Leakage Current | V _{IN} = V _{CC} or GND | 5.5 | | | ±0.1 | | ±1.0 | μA |
| I _{OFF} | Power off Input Leakage Current | 5.5V or V _{IN} = GND | 0 | | | 1.0 | | 10 | μA |
| I _{CC} | Quiescent Supply Current | V _{IN} = V _{CC} or GND | 5.5 | | | 1.0 | | 10 | μA |

NLX1G74

AC ELECTRICAL CHARACTERISTICS (Input $t_r = t_f = 3.0$ ns)

| Symbol | Parameter | V _{CC} (V) | Test Conditions | T _A = 25°C | | | T _A = -40 to 85°C | | Unit |
|--|---|---------------------|--|-----------------------|-----|------|------------------------------|------|------|
| | | | | Min | Typ | Max | Min | Max | |
| f _{MAX} | Maximum Clock Frequency (50% Duty Cycle) (Waveform 1) | 1.8 ± 0.15 | C _L = 15 pF R _D = 1 MΩ S ₁ = Open | 75 | | | 75 | | MHz |
| | | 2.5 ± 0.2 | | 150 | | | 150 | | |
| | | 3.3 ± 0.3 | | 200 | | | 200 | | |
| | | 5.0 ± 0.5 | 250 | | | 250 | | | |
| | | 3.3 ± 0.3 | C _L = 50 pF, R _D = 500 Ω, S ₁ = Open | 175 | | | 175 | | |
| | | 5.0 ± 0.5 | | 200 | | | 200 | | |
| t _{PLH} , t _{PHL} | Propagation Delay, CP to Q or Q̄ (Waveform 1) | 1.8 ± 0.15 | C _L = 15 pF R _D = 1 MΩ S ₁ = Open | 2.5 | 6.5 | 12.5 | 2.5 | 13 | ns |
| | | 2.5 ± 0.2 | | 1.5 | 3.8 | 7.5 | 1.5 | 8.0 | |
| | | 3.3 ± 0.3 | | 1.0 | 2.8 | 6.5 | 1.0 | 7.0 | |
| | | 5.0 ± 0.5 | 0.8 | 2.2 | 4.5 | 0.8 | 5.0 | | |
| | | 3.3 ± 0.3 | C _L = 50 pF, R _D = 500 Ω, S ₁ = Open | 1.0 | 3.4 | 7.0 | 1.0 | 7.5 | |
| | | 5.0 ± 0.5 | | 1.0 | 2.6 | 5.0 | 1.0 | 5.5 | |
| t _{PLH} , t _{PHL} | Propagation Delay, PR or CLR to Q or Q̄ (Waveform 2) | 1.8 ± 0.15 | C _L = 15 pF R _D = 1 MΩ S ₁ = Open | 2.5 | 6.5 | 14 | 2.5 | 14.5 | ns |
| | | 2.5 ± 0.2 | | 1.5 | 3.8 | 9.0 | 1.5 | 9.5 | |
| | | 3.3 ± 0.3 | | 1.0 | 2.8 | 6.5 | 1.0 | 7.0 | |
| | | 5.0 ± 0.5 | 0.8 | 2.2 | 5.0 | 0.8 | 5.5 | | |
| | | 3.3 ± 0.3 | C _L = 50 pF, R _D = 500 Ω, S ₁ = Open | 1.0 | 3.4 | 7.0 | 1.0 | 7.5 | |
| | | 5.0 ± 0.5 | | 1.0 | 2.6 | 5.0 | 1.0 | 5.5 | |
| t _S | Setup Time, D to CP (Waveform 1) | 1.8 ± 0.15 | C _L = 15 pF R _D = 1 MΩ S ₁ = Open | 6.5 | | | 6.5 | | ns |
| | | 2.5 ± 0.2 | | 3.5 | | | 3.5 | | |
| | | 3.3 ± 0.3 | | 2.0 | | | 2.0 | | |
| | | 5.0 ± 0.5 | 1.5 | | | 1.5 | | | |
| | | 3.3 ± 0.3 | C _L = 50 pF, R _D = 500 Ω, S ₁ = Open | 2.0 | | | 2.0 | | |
| | | 5.0 ± 0.5 | | 1.5 | | | 1.5 | | |
| t _H | Hold Time, D to CP (Waveform 1) | 1.8 ± 0.15 | C _L = 15 pF R _D = 1 MΩ S ₁ = Open | 0.5 | | | 0.5 | | ns |
| | | 2.5 ± 0.2 | | 0.5 | | | 0.5 | | |
| | | 3.3 ± 0.3 | | 0.5 | | | 0.5 | | |
| | | 5.0 ± 0.5 | 0.5 | | | 0.5 | | | |
| | | 3.3 ± 0.3 | C _L = 50 pF, R _D = 500 Ω, S ₁ = Open | 0.5 | | | 0.5 | | |
| | | 5.0 ± 0.5 | | 0.5 | | | 0.5 | | |
| t _W | Pulse Width, CP, CLR, PR (Waveform 3) | 1.8 ± 0.15 | C _L = 15 pF R _D = 1 MΩ S ₁ = Open | 6.0 | | | 6.0 | | ns |
| | | 2.5 ± 0.2 | | 4.0 | | | 4.0 | | |
| | | 3.3 ± 0.3 | | 3.0 | | | 3.0 | | |
| | | 5.0 ± 0.5 | 2.0 | | | 2.0 | | | |
| | | 3.3 ± 0.3 | C _L = 50 pF, R _D = 500 Ω, S ₁ = Open | 3.0 | | | 3.0 | | |
| | | 5.0 ± 0.5 | | 2.0 | | | 2.0 | | |
| t _{REC} | Recover Time PR; CLR to CP (Waveform 3) | 1.8 ± 0.15 | C _L = 15 pF R _D = 1 MΩ S ₁ = Open | 8.0 | | | 8.0 | | MHz |
| | | 2.5 ± 0.2 | | 4.5 | | | 4.5 | | |
| | | 3.3 ± 0.3 | | 3.0 | | | 3.0 | | |
| | | 5.0 ± 0.5 | 3.0 | | | 3.0 | | | |
| | | 3.3 ± 0.3 | C _L = 50 pF, R _D = 500 Ω, S ₁ = Open | 3.0 | | | 3.0 | | |
| | | 5.0 ± 0.5 | | 3.0 | | | 3.0 | | |

7. C_{PD} is defined as the value of the internal equivalent capacitance which is calculated from the operating current consumption without load. Average operating current can be obtained by the equation: I_{CC(OPR)} = C_{PD} • V_{CC} • f_{in} + I_{CC}/2 (per flip-flop). C_{PD} is used to determine the no-load dynamic power consumption; P_D = C_{PD} • V_{CC}² • f_{in} + I_{CC} • V_{CC}.

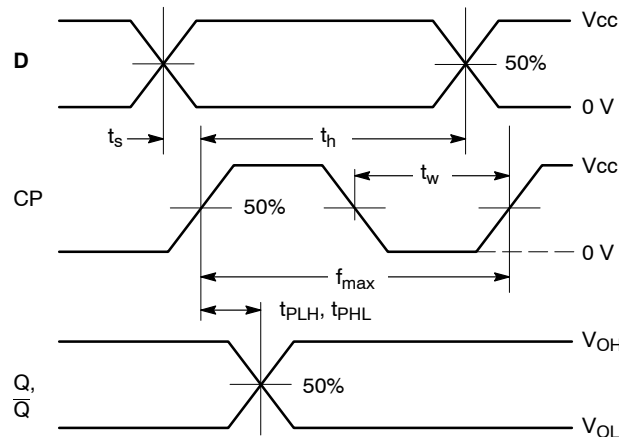
CAPACITANCE (Note 8)

| Symbol | Parameter | Condition | Typical | Unit |
|------------------|--|-------------------------|---------|------|
| C _{IN} | Input Capacitance | V _{CC} = 5.5 V | 7.0 | pF |
| C _{OUT} | Output Capacitance | V _{CC} = 5.5 V | 7.0 | pF |
| C _{PD} | Power Dissipation Capacitance (Note 9) Frequency = 10 MHz | V _{CC} = 3.3 V | 16 | pF |
| | | V _{CC} = 5.0 V | 21 | |

8. T_A = +25°C, f = 1 MHz

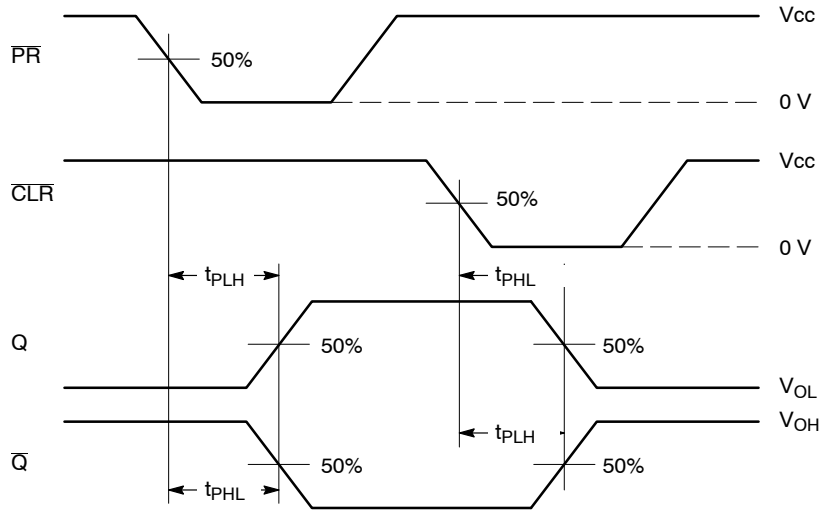
9. C_{PD} is defined as the value of the internal equivalent capacitance which is derived from dynamic operating current consumption (I_{CCD}) at no output loading and operating at 50% duty cycle. (See Figure 1) C_{PD} is related to I_{CCD} dynamic operating current by the expression: I_{CCD} = C_{PD} • V_{CC} • f_{in} + I_{CC(static)}.

NLX1G74



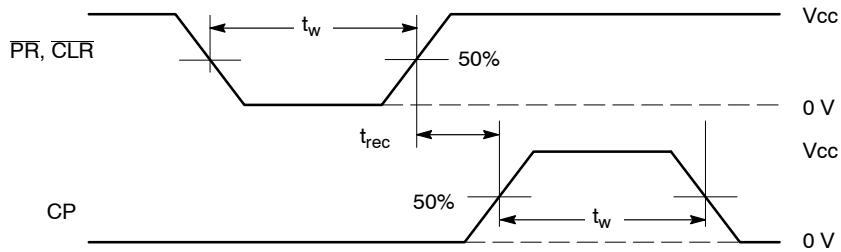
WAVEFORM 1 - PROPAGATION DELAYS, SETUP AND HOLD TIMES

$t_R = t_F = 3.0$ ns, 10% to 90%; $f = 1$ MHz; $t_W = 500$ ns



WAVEFORM 2 - PROPAGATION DELAYS

$t_R = t_F = 3.0$ ns, 10% to 90%; $f = 1$ MHz; $t_W = 500$ ns



WAVEFORM 3 - RECOVERY TIME

$t_R = t_F = 3.0$ ns from 10% to 90%; $f = 1$ MHz; $t_w = 500$ ns

Output Reg: $V_{OL} \leq 0.8$ V, $V_{OH} \geq 2.0$ V

Figure 1. AC Waveforms

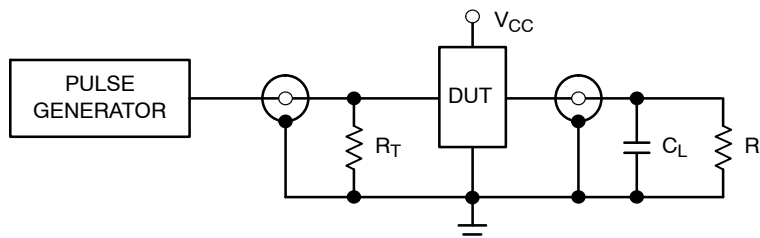
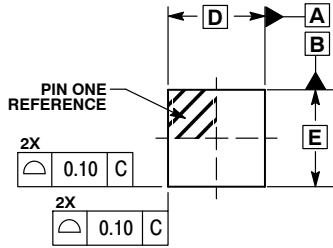


Figure 2. Test Circuit

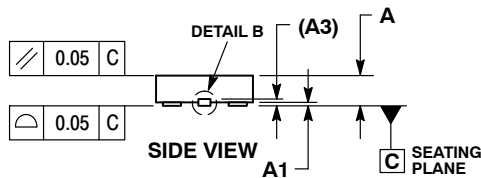
NLX1G74

PACKAGE DIMENSIONS

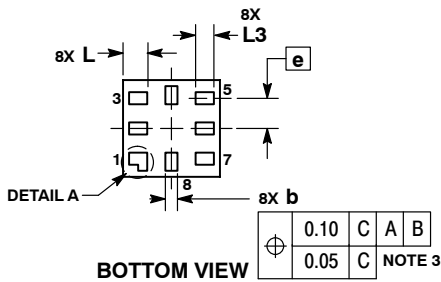
UQFN8 MU SUFFIX CASE 523AN ISSUE O



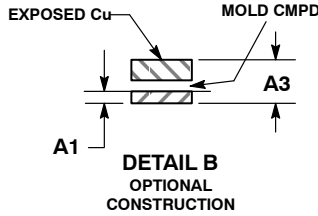
TOP VIEW



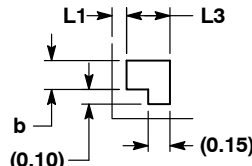
SIDE VIEW



BOTTOM VIEW



DETAIL B
OPTIONAL
CONSTRUCTION



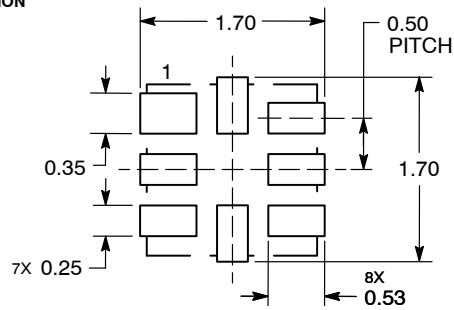
DETAIL A
OPTIONAL
CONSTRUCTION

NOTES:

1. DIMENSIONING AND TOLERANCING PER ASME Y14.5M, 1994.
2. CONTROLLING DIMENSION: MILLIMETERS.
3. DIMENSION b APPLIES TO PLATED TERMINAL AND IS MEASURED BETWEEN 0.15 AND 0.30 mm FROM THE TERMINAL TIP.


| MILLIMETERS | | |
|-------------|------|------|
| DIM | MIN | MAX |
| A | 0.45 | 0.60 |
| A1 | 0.00 | 0.05 |
| A3 | 0.13 | REF |
| b | 0.15 | 0.25 |
| D | 1.60 | BSC |
| E | 1.60 | BSC |
| e | 0.50 | BSC |
| L | 0.35 | 0.45 |
| L1 | --- | 0.15 |
| L3 | 0.25 | 0.35 |

SOLDERING FOOTPRINT*



DIMENSIONS: MILLIMETERS

*For additional information on our Pb-Free strategy and soldering details, please download the ON Semiconductor Soldering and Mounting Techniques Reference Manual, SOLDERRM/D.

ON Semiconductor and  are registered trademarks of Semiconductor Components Industries, LLC (SCILLC). SCILLC owns the rights to a number of patents, trademarks, copyrights, trade secrets, and other intellectual property. A listing of SCILLC's product/patent coverage may be accessed at www.onsemi.com/site/pdf/Patent-Marking.pdf. SCILLC reserves the right to make changes without further notice to any products herein. SCILLC makes no warranty, representation or guarantee regarding the suitability of its products for any particular purpose, nor does SCILLC assume any liability arising out of the application or use of any product or circuit, and specifically disclaims any and all liability, including without limitation special, consequential or incidental damages. "Typical" parameters which may be provided in SCILLC data sheets and/or specifications can and do vary in different applications and actual performance may vary over time. All operating parameters, including "Typicals" must be validated for each customer application by customer's technical experts. SCILLC does not convey any license under its patent rights nor the rights of others. SCILLC products are not designed, intended, or authorized for use as components in systems intended for surgical implant into the body, or other applications intended to support or sustain life, or for any other application in which the failure of the SCILLC product could create a situation where personal injury or death may occur. Should Buyer purchase or use SCILLC products for any such unintended or unauthorized application, Buyer shall indemnify and hold SCILLC and its officers, employees, subsidiaries, affiliates, and distributors harmless against all claims, costs, damages, and expenses, and reasonable attorney fees arising out of, directly or indirectly, any claim of personal injury or death associated with such unintended or unauthorized use, even if such claim alleges that SCILLC was negligent regarding the design or manufacture of the part. SCILLC is an Equal Opportunity/Affirmative Action Employer. This literature is subject to all applicable copyright laws and is not for resale in any manner.

PUBLICATION ORDERING INFORMATION

LITERATURE FULFILLMENT:
Literature Distribution Center for ON Semiconductor
P.O. Box 5163, Denver, Colorado 80217 USA
Phone: 303-675-2175 or 800-344-3860 Toll Free USA/Canada
Fax: 303-675-2176 or 800-344-3867 Toll Free USA/Canada
Email: orderlit@onsemi.com

N. American Technical Support: 800-282-9855 Toll Free
USA/Canada
Europe, Middle East and Africa Technical Support:
Phone: 421 33 790 2910
Japan Customer Focus Center
Phone: 81-3-5817-1050

ON Semiconductor Website: www.onsemi.com
Order Literature: <http://www.onsemi.com/orderlit>
For additional information, please contact your local Sales Representative