



Chipsmall Limited consists of a professional team with an average of over 10 year of expertise in the distribution of electronic components. Based in Hongkong, we have already established firm and mutual-benefit business relationships with customers from,Europe,America and south Asia,supplying obsolete and hard-to-find components to meet their specific needs.

With the principle of “Quality Parts,Customers Priority,Honest Operation,and Considerate Service”,our business mainly focus on the distribution of electronic components. Line cards we deal with include Microchip,ALPS,ROHM,Xilinx,Pulse,ON,Everlight and Freescale. Main products comprise IC,Modules,Potentiometer,IC Socket,Relay,Connector.Our parts cover such applications as commercial,industrial, and automotives areas.

We are looking forward to setting up business relationship with you and hope to provide you with the best service and solution. Let us make a better world for our industry!



Contact us

Tel: +86-755-8981 8866 Fax: +86-755-8427 6832

Email & Skype: info@chipsmall.com Web: www.chipsmall.com

Address: A1208, Overseas Decoration Building, #122 Zhenhua RD., Futian, Shenzhen, China



Harsh Media Pressure Sensor NPR-101



NovaSensor's NPR-101 pressure sensor is a silicon-based MEMS device using "Backside Absolute Pressure" technology designed for harsh media exposure, which eliminates the direct contact of the sensing circuitry with the applied media. The device is coupled with an ASIC to provide a ratiometric output proportional to the applied pressure. Integrated diagnostics included.

Applications

- Transmission fluid pressure sensing
- Oil pressure sensing
- Fuel pressure sensing



Features

- Harsh media compatibility
- High level output
- Small package



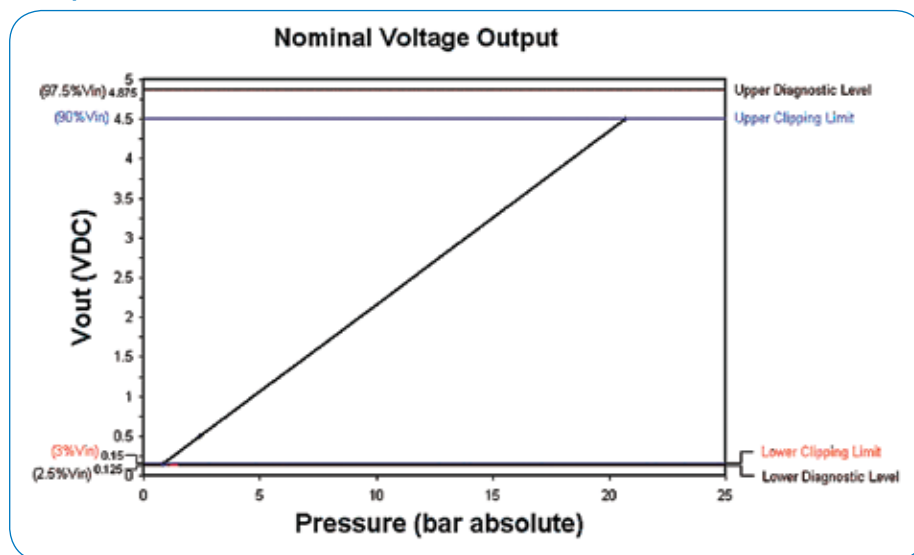
Harsh Media Pressure Sensor Specifications

NPR-101

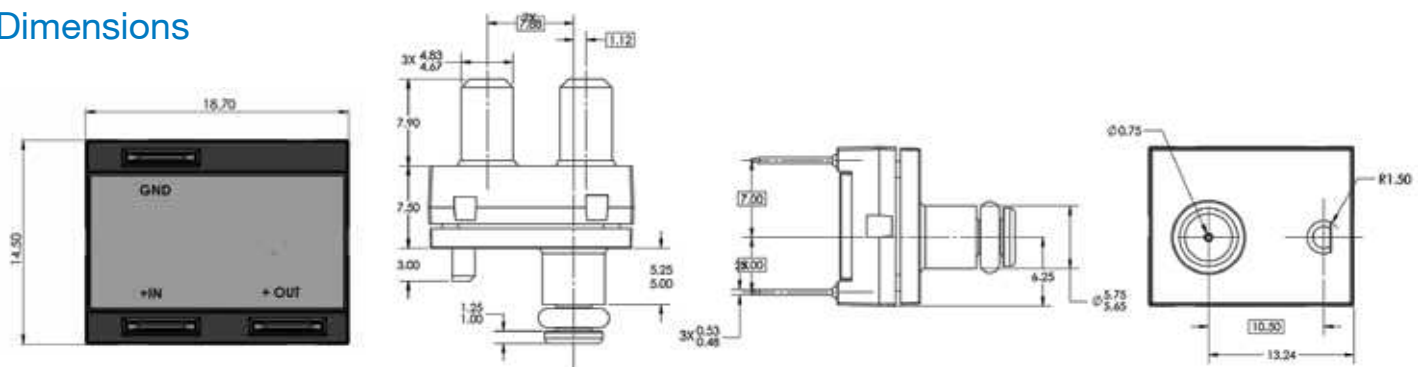
Operating Pressure Range	300 PSIA full scale pressure (20.68 BarA)
Performance	
Total Error band	+/-2.0% FP (-20C to 100C) +/-3.0% FP (100C to 140C)
Electrical	
Supply Voltage (Vcc)	4.5 to 5.5 VDC (6.5 VDC MAX)
Supply Current	3 ma
Output Range	10% to 90% of Vcc
Over-Voltage Protection	6.5 VDC MAX
Reverse Voltage Protection	None
Durability	
Cycle Life	1 million cycles
Proof Pressure	1.5 times rated pressure
Burst Pressure	2.5 times rated pressure

Output Curve : NPR-101

Other transfer functions available on request



Dimensions



Amphenol
Advanced Sensors

www.amphenol-sensors.com

© 2016 Amphenol Corporation. All Rights Reserved. Specifications are subject to change without notice.
Other company names and product names used in this document are the registered trademarks or trademarks of their respective owners.

AAS-920-671B - 03/2016