



Chipsmall Limited consists of a professional team with an average of over 10 year of expertise in the distribution of electronic components. Based in Hongkong, we have already established firm and mutual-benefit business relationships with customers from,Europe,America and south Asia,supplying obsolete and hard-to-find components to meet their specific needs.

With the principle of “Quality Parts,Customers Priority,Honest Operation,and Considerate Service”,our business mainly focus on the distribution of electronic components. Line cards we deal with include Microchip,ALPS,ROHM,Xilinx,Pulse,ON,Everlight and Freescale. Main products comprise IC,Modules,Potentiometer,IC Socket,Relay,Connector.Our parts cover such applications as commercial,industrial, and automotives areas.

We are looking forward to setting up business relationship with you and hope to provide you with the best service and solution. Let us make a better world for our industry!



Contact us

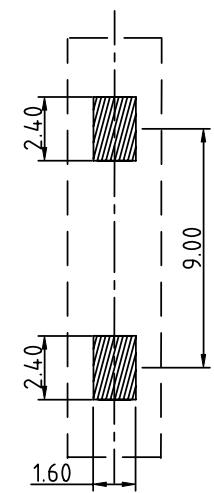
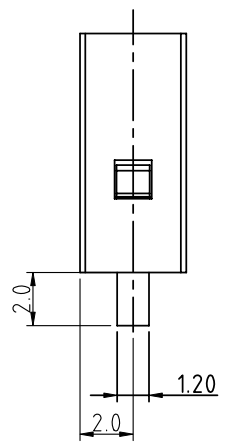
Tel: +86-755-8981 8866 Fax: +86-755-8427 6832

Email & Skype: info@chipsmall.com Web: www.chipsmall.com

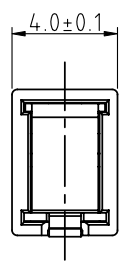
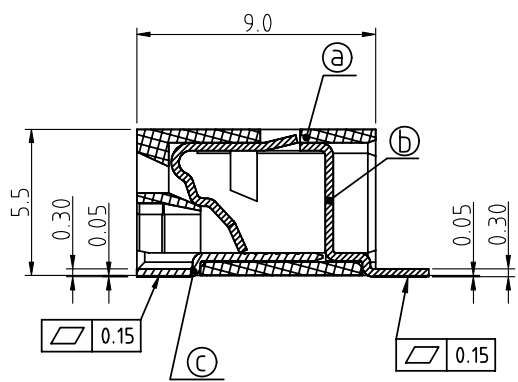
Address: A1208, Overseas Decoration Building, #122 Zhenhua RD., Futian, Shenzhen, China



PRODUCT NUMBER	PITCH
NQ0121x000J0G	4.00 mm



RECOMMENDED P.C.B LAYOUT



- Material:
- Item ① Terminal housing: LCP (UL94V-0)
 - Item ② Long solder pin: Copper alloy, Matte Tin plated
 - Item ③ Short solder pin: Copper alloy, Matte Tin plated

- | | | |
|-----------------------------------|------------------|-----------------|
| Electrical | UL (UL 1977) | cULus (UL 1977) |
| ● Voltage rating: | 600VAC | 600VAC |
| ● Current rating: | 9A | 5A |
| ● Wire range: | | |
| ● Solid wire (AWG): | 18-24 | |
| ● Tin Dipped Stranded wire (AWG): | 18-24 | |
| ● Wire strip length: | 6-7mm | |
| ● Withstanding Voltage: | 1.6KV | |
| ● Operating temperature: | -45°C to +130°C | |
| ● Reflow soldering temperature: | 260°C/10 Sec Max | |
| ● Safety Approval: | | |

PART NO.: NQ 01 2 1 x 0 00J0 G

No. of poles: 01 1 pole
 color: 0: Black (RAL9005) 1: Natural color 8: Grey (RAL7044)
 RoHS compliant: (lead < 4%) In copper Alloy

mat'l. code		surface ASME Y14.5 ✓	tolerance ASME Y14.5	projection 	product family TERMINAL BLOCK
ltr	ecn no	dr	date	tolerances unless otherwise specified	title TERMINAL BLOCK SPRING CLAMP, SMT TYPE
B	T-21475	HF	072015	angles X ± 1°	
				scale	dwg no NQ0121x000J0G
				dr	sheet 1 of 1 size A4
				enr	FCI type CUSTOMER Drawing
				chr	
				appd	
sheet index	revision sheet	B	1		