



Chipsmall Limited consists of a professional team with an average of over 10 year of expertise in the distribution of electronic components. Based in Hongkong, we have already established firm and mutual-benefit business relationships with customers from,Europe,America and south Asia,supplying obsolete and hard-to-find components to meet their specific needs.

With the principle of "Quality Parts,Customers Priority,Honest Operation,and Considerate Service",our business mainly focus on the distribution of electronic components. Line cards we deal with include Microchip,ALPS,ROHM,Xilinx,Pulse,ON,Everlight and Freescale. Main products comprise IC,Modules,Potentiometer,IC Socket,Relay,Connector.Our parts cover such applications as commercial,industrial, and automotives areas.

We are looking forward to setting up business relationship with you and hope to provide you with the best service and solution. Let us make a better world for our industry!



Contact us

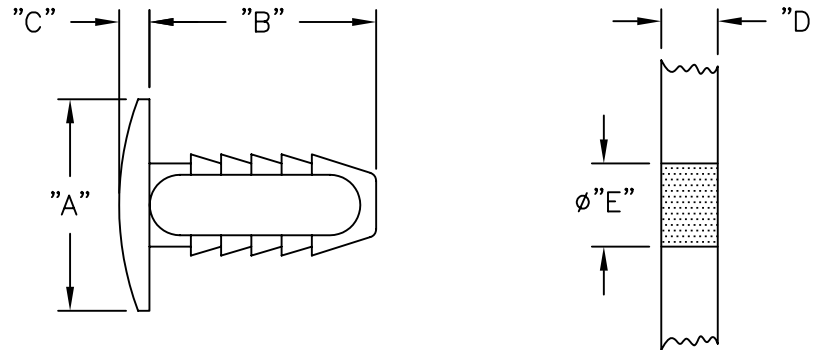
Tel: +86-755-8981 8866 Fax: +86-755-8427 6832

Email & Skype: info@chipsmall.com Web: www.chipsmall.com

Address: A1208, Overseas Decoration Building, #122 Zhenhua RD., Futian, Shenzhen, China



PART NO.	DIM. "A"	DIM. "B"	DIM. "C"	PANEL THICKNESS "D"	HOLE DIA. "E"
NR-92-1	.551 (14.0)	.591 (15.0)	.079 (2.0)	.118-.433 (3.0-11.0)	.228 (5.8)
NR-92-2	.630 (16.0)	.748 (19.0)		.118-.591 (3.0-15.0)	
NR-92-4	.709 (18.0)	.906 (23.0)		.118-.748 (3.0-19.0)	



NOTES:

1. MATERIAL: NYLON 6/6 (RMS-01).
2. COLOR: NATURAL.
 COLOR BLACK AVAILABLE BY SPECIAL ORDER.
 TO ORDER ADD SUFFIX "B" TO PART NO.
 EXAMPLE: NR-92-XB

<table border="1"> <tr> <td>B</td> <td>SEE ECN #485 FOR CHANGES</td> <td>SM 10.10.02</td> </tr> <tr> <td>A</td> <td>CHANGED FILE NO.</td> <td>SM 03.12.02</td> </tr> <tr> <td>REV</td> <td>DESCRIPTION</td> <td>ENGR DATE</td> </tr> </table>			B	SEE ECN #485 FOR CHANGES	SM 10.10.02	A	CHANGED FILE NO.	SM 03.12.02	REV	DESCRIPTION	ENGR DATE	<table border="1"> <tr> <td colspan="4">TITLE: NYLON RIVET</td> <td colspan="2"> </td> <td colspan="2"> </td> <td colspan="2"> DWG IN IN (MM) </td> </tr> <tr> <td colspan="2">TOLERANCES UNLESS NOTED .XX=±.010 .XXX=±.005 FRAC=±1/64 ANG=±1'</td> <td>FILE # NR</td> <td>DWN: E.P.</td> <td colspan="2">APP:</td> <td colspan="2">FINAL</td> <td colspan="2"></td> </tr> <tr> <td colspan="2">MAT'L: SEE NOTES</td> <td>DT: 9-23-98</td> <td colspan="2">DT:</td> <td colspan="2">PART #</td> <td colspan="2">PRINT TYPE</td> </tr> <tr> <td colspan="2">RE: RICHCO, INC.</td> <td colspan="2">RICHCO INC. PO BOX 804238, CHICAGO, 60680 (773) 539-4060</td> <td colspan="2">NR-92 SERIES</td> <td colspan="2">CA</td> </tr> </table>				TITLE: NYLON RIVET								DWG IN IN (MM)		TOLERANCES UNLESS NOTED .XX=±.010 .XXX=±.005 FRAC=±1/64 ANG=±1'		FILE # NR	DWN: E.P.	APP:		FINAL				MAT'L: SEE NOTES		DT: 9-23-98	DT:		PART #		PRINT TYPE		RE: RICHCO, INC.		RICHCO INC. PO BOX 804238, CHICAGO, 60680 (773) 539-4060		NR-92 SERIES		CA	
B	SEE ECN #485 FOR CHANGES	SM 10.10.02																																																		
A	CHANGED FILE NO.	SM 03.12.02																																																		
REV	DESCRIPTION	ENGR DATE																																																		
TITLE: NYLON RIVET								DWG IN IN (MM)																																												
TOLERANCES UNLESS NOTED .XX=±.010 .XXX=±.005 FRAC=±1/64 ANG=±1'		FILE # NR	DWN: E.P.	APP:		FINAL																																														
MAT'L: SEE NOTES		DT: 9-23-98	DT:		PART #		PRINT TYPE																																													
RE: RICHCO, INC.		RICHCO INC. PO BOX 804238, CHICAGO, 60680 (773) 539-4060		NR-92 SERIES		CA																																														