



Chipsmall Limited consists of a professional team with an average of over 10 year of expertise in the distribution of electronic components. Based in Hongkong, we have already established firm and mutual-benefit business relationships with customers from,Europe,America and south Asia,supplying obsolete and hard-to-find components to meet their specific needs.

With the principle of “Quality Parts,Customers Priority,Honest Operation,and Considerate Service”,our business mainly focus on the distribution of electronic components. Line cards we deal with include Microchip,ALPS,ROHM,Xilinx,Pulse,ON,Everlight and Freescale. Main products comprise IC,Modules,Potentiometer,IC Socket,Relay,Connector.Our parts cover such applications as commercial,industrial, and automotives areas.

We are looking forward to setting up business relationship with you and hope to provide you with the best service and solution. Let us make a better world for our industry!



## Contact us

Tel: +86-755-8981 8866 Fax: +86-755-8427 6832

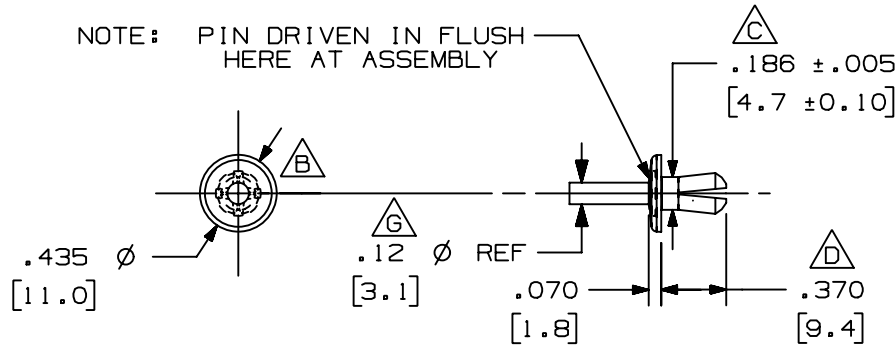
Email & Skype: info@chipsmall.com Web: www.chipsmall.com

Address: A1208, Overseas Decoration Building, #122 Zhenhua RD., Futian, Shenzhen, China



THIS COPY IS PROVIDED ON A RESTRICTED BASIS AND IS NOT TO BE USED IN ANY WAY DETRIMENTAL TO THE INTERESTS OF PANDUIT CORP.

NOTE: PIN DRIVEN IN FLUSH  
HERE AT ASSEMBLY



E

PANDUIT P/N	WEIGHT
NR1 -	.11LB/ 100PCS. (50g/ 100PCS.)

NOTES:

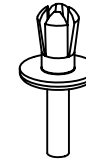
- SEE CURRENT CATALOG FOR ADDITIONAL PART SUFFIXES TO INDICATE COLOR AND OR PACKAGE QUANTITY.
- DIMENSIONS IN PARENTHESES ARE METRIC.

F A I

J

TOTAL THICKNESS PANEL & DUCT	HOLE SIZE + .005 [ .10 ] - .000 [ .00 ]	ANSI STANDARD STRAIGHT SHANK TWIST DRILL BIT SIZE
.156 - .187 [ 4.0 - 4.7 ]	.187 [ 4.7 ]	15
.187 - .218 [ 4.8 - 5.5 ]	.193 [ 4.9 ]	11
.219 - .250 [ 5.6 - 6.35 ]	.203 [ 5.2 ]	7
.251 - .281 [ 6.38 - 7.1 ]	.213 [ 5.4 ]	4

H



E

CAD FILENAME/LAYERS D36401BA\_DC\_NR1\_RIVET\_01C.prt

PANDUIT CORP. TINLEY PARK, ILLINOIS

PUSH RIVET  
(NR1)

UNLESS OTHERWISE SPECIFIED,  
DIMENSIONAL TOLERANCES ARE:  
(.X) ± (.XXX) ± .020 (.5)  
(.XX) ± ANGLES ±

UNLESS OTHERWISE SPECIFIED,  
ALL DIMENSIONS ARE GIVEN  
IN INCHES, THIRD ANGLE PROJECTION.

DRAWN BY R <sup>2</sup>	MAT'L: NYLON 6/6 NATURAL	SCALE FULL
DATE 1-29-64		DRAWING NO. D-191
CHK'D CEF		DWG SIZE A

REV	DATE	BY	CHK	DESCRIPTION	ECN	R	CUST	SUP
--	-----	---	---	J. ADDED DRILL BIT SIZE I. CHANGED COLUMN TITLE	-----	---	---	
9	11-23-05	JCST	JKG	H. CHANGED DIMENSIONS TO RANGES G. ADDED REFERENCE DIMENSION	D-191	JKG	JKG	
8	8-29-01	JCST	JKG	F. DUAL DIMENSIONED CHART.	D-191	JKG	JKG	
7	9-13-00	JHNU	HIW	E. REVISED AND REDRAWN	D-191	HIW	HIW	
6	4-15-84	DW/CEF	DW/CEF	D. REV'D DIM WAS .380 C. REV'D DIM. WAS .185 AND ADDED TOL.	D-191	CEF	CEF	
5	7-31-79	RJ/MP	RJ/MP	B. ADDED RING SLOT TO FACE OF HEAD, ECN 191-5	D-191	JSR	JSR	
4	3-18-76	REC	REC	A. ADDED PANEL & HOLE SIZE CHART.	D-191	JSR	JSR	
3	9-26-72	JRL	JRL	REDRAWN WITH FORMAT CHANGE	D-191	JSR	JSR	