



Chipsmall Limited consists of a professional team with an average of over 10 year of expertise in the distribution of electronic components. Based in Hongkong, we have already established firm and mutual-benefit business relationships with customers from,Europe,America and south Asia,supplying obsolete and hard-to-find components to meet their specific needs.

With the principle of “Quality Parts,Customers Priority,Honest Operation,and Considerate Service”,our business mainly focus on the distribution of electronic components. Line cards we deal with include Microchip,ALPS,ROHM,Xilinx,Pulse,ON,Everlight and Freescale. Main products comprise IC,Modules,Potentiometer,IC Socket,Relay,Connector.Our parts cover such applications as commercial,industrial, and automotives areas.

We are looking forward to setting up business relationship with you and hope to provide you with the best service and solution. Let us make a better world for our industry!



Contact us

Tel: +86-755-8981 8866 Fax: +86-755-8427 6832

Email & Skype: info@chipsmall.com Web: www.chipsmall.com

Address: A1208, Overseas Decoration Building, #122 Zhenhua RD., Futian, Shenzhen, China





Temperature protection device

Chip NTC thermistor

Automotive grade: Corresponding to 125, 150°C

NTCG series

NTCG 1005 **JIS 1005 [EIA 0402]**

NTCG 1608 **JIS 1608 [EIA 0603]**

REMINDERS FOR USING THESE PRODUCTS

Before using these products, be sure to request the delivery specifications.

SAFETY REMINDERS

Please pay sufficient attention to the warnings for safe designing when using this products.

REMINDERS

Please pay careful attention to the precautions and follow safe designing practices when using these products.

Incorrect usage may lead to destroyed NTC thermistors and damages or malfunctions with the devices used.

- Please use them within the ranges of the ratings and performance provided in the catalog and delivery specifications upon confirming the environments where they are to be used and installed.
- Do not use them outside the operating temperature range.
- Do not use them with the ratings or maximum permissible power levels exceeded.
- Do not quickly apply 5mW or more of load with the constant-voltage power supply in the NTC thermistor as this may lead to staying in thermal runaway mode or the red-shortening of chips.
- Please be cautious of the applied voltage in thermistors as instruments may malfunction with the lowering of resistance due to self heating.
- With instruments that consumers can touch the thermistors with their hands, please carefully warn them not to touch the thermistors.
- Store them in locations where the temperature is 10°C to +40°C and the relative humidity is 75% or below, avoid environments where there are sudden changes in temperatures, direct sunlight, corrosive gas, grit, or dust, and keep them packed in a manner where no loading stress is applied in order to avoid deterioration and damage. (please use them within six months.)
- When sealing thermistors, please do so upon first considering the type, quantity, hardening conditions, and adhesiveness of the sealing material and confirming its reliability.
- Avoid powerful vibrations, impact (such as by dropping), pressure, etc. on thermistors that exceed the prescribed levels.
- Do not use them for long periods of time in environments with a relative humidity of over 85%. (this excludes cases where countermeasures have been taken.)
- Do not use them in the following environments. (this excludes cases where countermeasures have been taken.)
 - Corrosive gases (Cl₂, NH₃, SO_x, NO_x, etc.)
 - Environments with highly conductive substances (electrolytes, water, saltwater, etc.)
 - Environments with acid, alkali, or organic solvents
 - Dusty areas
- Please observe the following precautions when attaching them to substrates as failure to do so may result in destruction or malfunction.
 - Do not let the substrates get warped or twisted at any time during the soldering.
 - The landing size must be even on both the left and right sides.
 - Do not use items that have been dropped or detached.
 - Do not allow the adherence of more solder than needed.
- Reflow mounting is recommended with NTC thermistors, and not flow (dip) mounting.
- Attaching or making corrections with a soldering iron is not recommended as it can lead to troubles such as significant distorting due to thermal shock or cracking. If a soldering iron must be used, it should be 30W or below with the temperature of the tip at 350°C or below, and at a maximum of 5 seconds of soldering time. Also, do not let the tip of the soldering iron come in direct contact with the chips.
- Please use a substance such as resin that does not generate hydrogen (H₂) when forming insulation film over chips.
- Please contact our sales offices when considering the use of the products listed on this catalog for applications, whose performance and/or quality require a more stringent level of safety or reliability, or whose failure, malfunction or trouble could cause serious damage to society, person or property ('specific uses' such as automobiles, airplanes, medical instruments, nuclear devices, etc.) as well as when considering the use for applications that exceed the range and conditions of this catalog.

Please note that we are not responsible for any damages or losses incurred resulting from the use of these products that exceeds the range and conditions of this catalog or specific uses.

Please take appropriate measures such as acquiring protective circuits and devices that meet the uses, applications, and conditions of the instruments and keeping backup circuits.

NTC Thermistors

Automotive grade:Corresponding to 125,150°C

Overview of the NTCG series

■ CHARACTERISTICS OF NTC THERMISTORS

NTC(Negative Temperature Coefficient) thermistors are manufactured from sintered metal oxides. Each thermistor consists of a combination of two to four of the following materials: manganese, nickel, cobalt and copper. NTC thermistors are semiconductor resistors that exhibit decreasing resistance characteristics with increasing temperature. TDK thermistors have low thermal time constants which result in extremely high rates of resistance change to accurately track the temperature.

■ FEATURES OF NTCG SERIES

- The line-up corresponding to 125 °C is expanded.
- The line-up corresponding to 150 °C is added.
- AEC-Q200 compliant.

Fig.1 R-T Curve : 10kohm@25°C

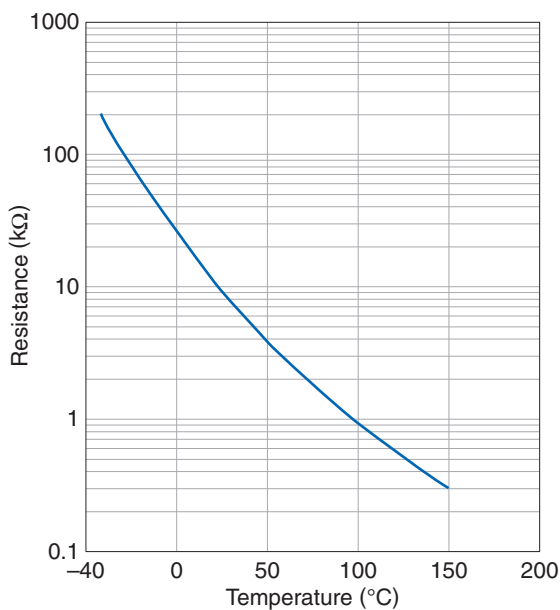
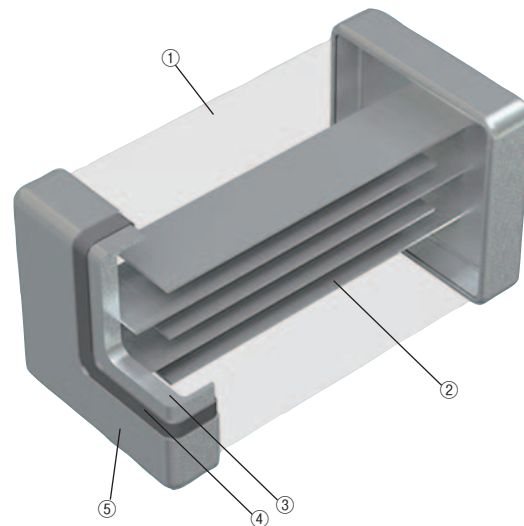


Fig.2 Internal structure of the multilayer chip Thermistors



No.	Name
①	Semiconductor ceramics
②	Internal electrode (Pd)
③	Ag
④	Terminal electrode Ni
⑤	Sn

○ RoHS Directive Compliant Product: See the following for more details.<https://product.tdk.com/info/en/environment/rohs/index.html>

⚠ Please be sure to request delivery specifications that provide further details on the features and specifications of the products for proper and safe use.
Please note that the contents may change without any prior notice due to reasons such as upgrading.

NTC Thermistors

Product compatible with RoHS directive

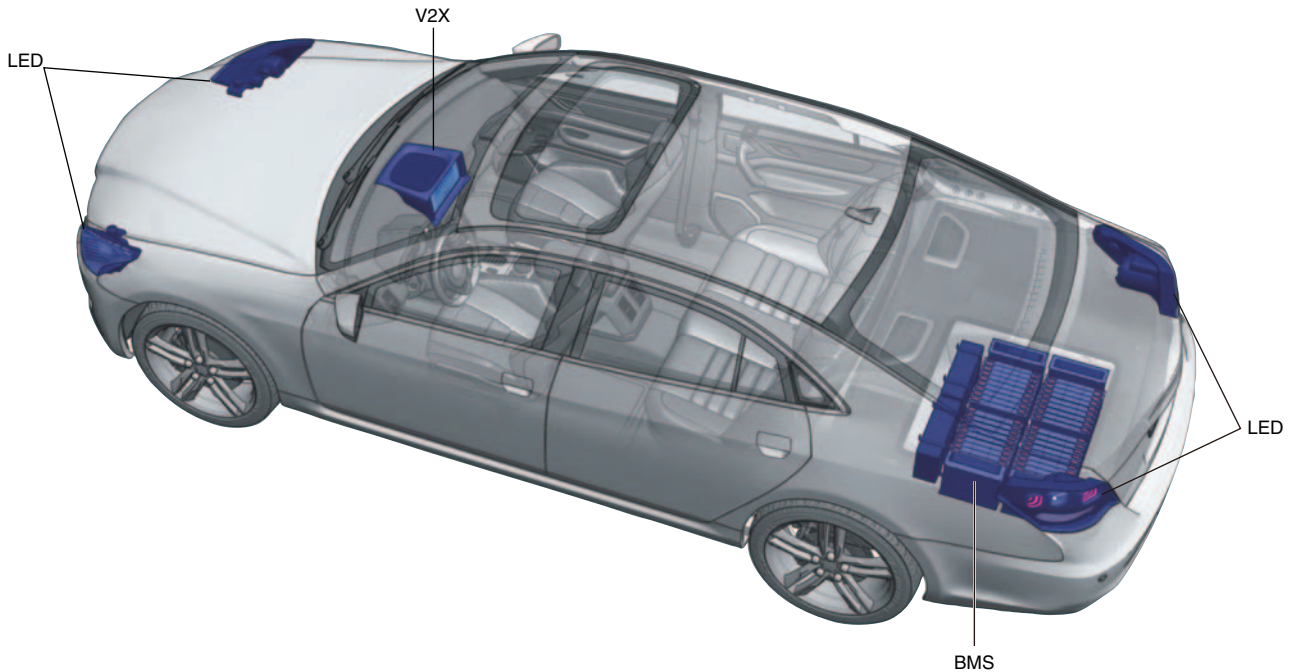
Compatible with lead-free solders

AEC-Q200

Automotive grade: Corresponding to 125,150°C

Overview of the NTCG series

APPLICATIONS



Use circuit example	Temperature compensation for various types of circuits			BMS	V2X	LED	
Circuit example 							
Resistance (R25)	2.2kΩ	22kΩ	4.7kΩ	10kΩ	68kΩ	100kΩ	
B constant (B25/85)	4000K to 4550K	4000K to 4550K	4000K to 4550K	4100K to 4750K	3435K to 4550K	4000K to 4750K	4000K to 4550K
Applicable to automobile (125°C)	NTCG1005 series	N/A	N/A	N/A	NTCG103JF103 FTDS	NTCG104BF683 FTDSX	NTCG104EF104 FTDSX
	NTCG1608 series	NTCG164BH222 JTDS	NTCG164LH223 JTDS	NTCG164BH472 JTDS	NTCG164BH103 JTDS	NTCG163JF103 FTDS	N/A
Applicable to automobile (150°C)	NTCG1005 series	N/A	N/A	N/A	NTCG103JF103 FT1S	N/A	NTCG104EF104 FT1SX
	NTCG1608 series	N/A	N/A	N/A	NTCG163JF103 FT1S	N/A	NTCG164KF104 FT1S

⚠ Please be sure to request delivery specifications that provide further details on the features and specifications of the products for proper and safe use. Please note that the contents may change without any prior notice due to reasons such as upgrading.

NTC Thermistors

Product compatible with RoHS directive

Compatible with lead-free solders

AEC-Q200

Automotive grade:Corresponding to 125,150°C

Overview of the NTCG series

PART NUMBER CONSTRUCTION

NTC	G		○○	3E	H	101	□	T	□□□						
Series name	Structural classification		shapes and dimensions Code (mm)		B constant*	B constant tolerance (%)		Nominal resistance (Ω)		Nominal resistance tolerance (%)		Packaging style		TDK internal code	
NTC thermistor	G	Multilayer internal electroded chip type NTC thermistor (Pb free type)	10	1005		F	±1	300	30	D	±0.5	T	Taping	DS	125°C vehicle response B constant: 25/85°C
			16	1608		H	±3	101	100	F	±1	B	Bulk	DSX	125°C vehicle response B constant: 25/50°C
			EIA					102	1000 (1kΩ)	H	±3			1S	150°C vehicle response B constant: 25/85°C
								103	10000 (10kΩ)	J	±5			1SX	150°C vehicle response B constant: 25/50°C

* B constant

B constant(K)			
2A	2000 to 2050	3A	3000 to 3050
2B	2051 to 2100	3B	3051 to 3100
2C	2101 to 2150	3C	3101 to 3150
2E	2201 to 2250	3E	3201 to 3250
2F	2251 to 2300	3F	3251 to 3300
2J	2401 to 2450	3J	3401 to 3450
2K	2451 to 2500	3K	3451 to 3500
2L	2501 to 2550	3L	3501 to 3550
2N	2601 to 2650	3N	3601 to 3650
2Q	2701 to 2750	3Q	3701 to 3750
2S	2801 to 2850	3S	3801 to 3850
		4S	4801 to 4850

B constant calculation formula

$$B = \frac{\ln R_1 - \ln R_2}{(1/T_1) - (1/T_2)}$$

B: B constant (K)

T1:Arbitrary temperature (K)

T2:Arbitrary temperature different from T1 (K)

R1:Zero-load resistance value at temperature T1(Ω)

R2:Zero-load resistance value at temperature T2(Ω)

Each temperature is measured in absolute temperature. 0°C=273.15K

Shape symbol (JIS)	Dimensions in mm			
	L	W	T	L1, L2
1005	1.00±0.05	0.50±0.05	0.50±0.05	0.1min
1608	1.60±0.10	0.80±0.10	0.80±0.10	0.2min

NTC Thermistors

Product compatible with RoHS directive

Compatible with lead-free solders

AEC-Q200

Automotive grade: Corresponding to 125,150°C

Characteristic map of NTCG series

125°C RESPONSE COUNTERPARTS

Resistance	Dimensions	Thickness (mm)	B constant		Catalog number			
			[25/ 85°C]	[25/ 50°C]	Resistance tolerance : ± 0.5%	Resistance tolerance : ± 1%	Resistance tolerance : ± 3%	Resistance tolerance : ± 5%
100Ω	1608	0.8±0.1	3,250K	3,244K	NTCG163EH101HTDS			
2.2kΩ	1608	0.8±0.1	4,100K	4,096K	NTCG164BH222JTDS			
4.7kΩ	1608	0.8±0.1	4,100K	4,067K	NTCG164BH472JTDS			
	1005	0.5±0.05	3,435K	3,380K	NTCG103JX103DTDS	NTCG103JF103FTDS	NTCG103JF103HTDS	NTCG103JF103JTDS
10kΩ	1608	0.8±0.1	3,435K	3,380K	NTCG163JX103DTDS	NTCG163JF103FTDS	NTCG163JF103HTDS	NTCG164BH103JTDS
	1005	0.5±0.05	4,550K	4,485K	NTCG163JH103HTDS			
22kΩ	1005	0.5±0.05	4,550K	4,485K	NTCG104LH223JTDS			
	1608	0.8±0.1	4,550K	4,485K	NTCG164LH223JTDS			
47kΩ	1005	0.5±0.05	4,550K	4,485K	NTCG104LH473JTDS			
	1608	0.8±0.1	4,550K	4,485K	NTCG164LH473JTDS			
68kΩ	1005	0.5±0.05	4,150K	4,085K	NTCG104BF683FTDSX			
	1005	0.5±0.05	4,308K	4,250K	NTCG104EF104FTDSX			
100kΩ	1005	0.5±0.05	4,485K	4,419K	NTCG164KF104FTDS			
	1608	0.8±0.1	4,550K	4,485K	NTCG164LH104JTDS			
150kΩ	1005	0.5±0.05	4,550K	4,485K	NTCG104LH154JTDS			
	1608	0.8±0.1	4,550K	4,485K	NTCG164LH154JTDS			

150°C RESPONSE COUNTERPARTS

Resistance	Dimensions	Thickness (mm)	B constant		Catalog number			
			[25/ 85°C]	[25/ 50°C]	Resistance tolerance : ± 0.5%	Resistance tolerance : ± 1%	Resistance tolerance : ± 3%	Resistance tolerance : ± 5%
10kΩ	1005	0.5 ± 0.05	3,435 K	3,380 K	NTCG103JF103FT1S			
	1608	0.8 ± 0.1	3,435 K	3,380 K	NTCG163JX103DT1S			
100kΩ	1005	0.5 ± 0.05	4,308 K	4,250 K	NTCG104EF104FT1SX			
	1608	0.8 ± 0.1	4,550 K	4,485 K	NTCG164KF104FT1S			

RATINGS 125°C RESPONSE COUNTERPARTS

Size	mm	1005	1608
Maximum rated power (25°C)*1	mW	100	100
Dissipation factors (25°C) *2	mW/°C	1	1

*1 Maximum rated power: Maximum power: at rated temperature (25°C), maximum power that can be applied continuously

*2 Dissipation factors: powered that it is equivalent that be increased in self-heating by load power thermistor at 1°C temperature

RATINGS 150°C RESPONSE COUNTERPARTS

Size	mm	1005	1608
Maximum rated power (25°C)*1	mW	125	125
Dissipation factors (25°C) *2	mW/°C	1	1

*1 Maximum rated power: Maximum power: at rated temperature (25°C), maximum power that can be applied continuously

*2 Dissipation factors: powered that it is equivalent that be increased in self-heating by load power thermistor at 1°C temperature

NTC Thermistors

Product compatible with RoHS directive

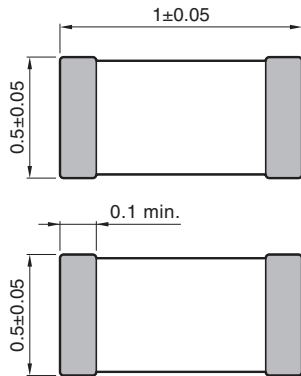
Compatible with lead-free solders

AEC-Q200

Automotive grade: Corresponding to 125,150°C

NTCG series 1005 type

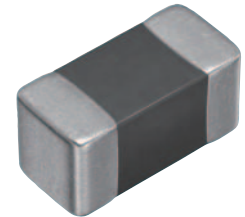
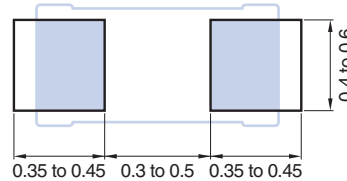
SHAPE & DIMENSIONS



Electrode material
Internal: Pd
External: Ag/Ni/Sn

Dimensions in mm

RECOMMENDED LAND PATTERN



125°C RESPONSE COUNTERPARTS (OPERATING TEMPERATURE RANGE : -40 to 125°C)

Part No.	Resistance [25°C] (Ω)	Resistance tolerance	B constant [25/50°C] (K)	B constant [25/75°C] (K)	B constant [25/85°C] (K)	B constant [25/100°C] (K)	B constant tolerance	Permissible operating current [25°C] (mA)
NTCG103JF103FTDS	10,000	±1%	3380	3422	3435	3453	±1%	0.31
NTCG103JF103HTDS	10,000	±3%	3380	3422	3435	3453	±1%	0.31
NTCG103JF103JTDS	10,000	±5%	3380	3422	3435	3453	±1%	0.31
NTCG103JX103DTDS	10,000	±0.5%	3380	3422	3435	3453	±0.7%	0.31
NTCG104LH223JTDS	22,000	±5%	4485	4533	4550	4573	±3%	0.21
NTCG104LH473JTDS	47,000	±5%	4485	4533	4550	4573	±3%	0.14
NTCG104BF683FTDSX	68,000	±1%	4085	4134	4150	4172	±1%	0.12
NTCG104EF104FTDSX	100,000	±1%	4250	4293	4308	4327	±1%	0.10
NTCG104LH104JTDS	100,000	±5%	4485	4533	4550	4573	±3%	0.10
NTCG104LH154JTDS	150,000	±5%	4485	4533	4550	4573	±3%	0.08

150°C RESPONSE COUNTERPARTS (OPERATING TEMPERATURE RANGE : -40 to 150°C)

Part No.	Resistance [25°C] (Ω)	Resistance tolerance	B constant [25/50°C] (K)	B constant [25/75°C] (K)	B constant [25/85°C] (K)	B constant [25/100°C] (K)	B constant tolerance	Permissible operating current [25°C] (mA)
NTCG103JF103FT1S	10,000	±1%	3380	3422	3435	3453	±1%	0.31
NTCG104EF104FT1SX	100,000	±1%	4250	4293	4308	4327	±1%	0.10

⚠ Please be sure to request delivery specifications that provide further details on the features and specifications of the products for proper and safe use.
Please note that the contents may change without any prior notice due to reasons such as upgrading.

NTC Thermistors

Product compatible with RoHS directive

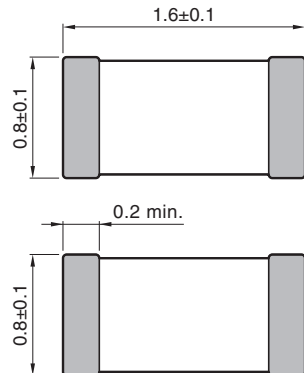
Compatible with lead-free solders

AEC-Q200

Automotive grade:Corresponding to 125,150°C

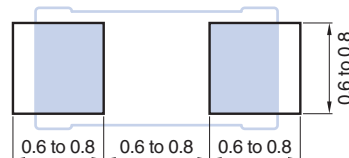
NTCG series 1608 type

SHAPE & DIMENSIONS

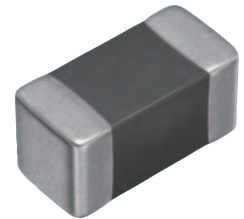


Electrode material
Internal: Pd
External: Ag/Ni/Sn

RECOMMENDED LAND PATTERN



Dimensions in mm



125°C RESPONSE COUNTERPARTS (OPERATING TEMPERATURE RANGE : -40 to 125°C)

Part No.	Resistance [25°C] (Ω)	Resistance tolerance	B constant [25/50°C] (K)	B constant [25/75°C] (K)	B constant [25/85°C] (K)	B constant [25/100°C] (K)	B constant tolerance	Permissible operating current [25°C] (mA)
NTCG163EH101HTDS	100	±3%	3244	3249	3250	3251	±3%	3.16
NTCG164BH222JTDS	2,200	±5%	4096	4100	4100	4100	±3%	0.67
NTCG164BH472JTDS	4,700	±5%	4067	4092	4100	4110	±3%	0.46
NTCG163JF103FTDS	10,000	±1%	3380	3422	3435	3453	±1%	0.31
NTCG163JF103HTDS	10,000	±3%	3380	3422	3435	3453	±1%	0.31
NTCG163JH103HTDS	10,000	±3%	3380	3422	3435	3453	±3%	0.31
NTCG163JX103DTDS	10,000	±0.5%	3380	3422	3435	3453	±0.7%	0.31
NTCG164BH103JTDS	10,000	±5%	4067	4092	4100	4110	±3%	0.31
NTCG164LH223JTDS	22,000	±5%	4485	4533	4550	4573	±3%	0.21
NTCG164LH473HTDS	47,000	±3%	4485	4533	4550	4573	±3%	0.14
NTCG164LH473JTDS	47,000	±5%	4485	4533	4550	4573	±3%	0.14
NTCG164KF104FTDS	100,000	±1%	4419	4468	4485	4509	±1%	0.10
NTCG164LH104JTDS	100,000	±5%	4485	4533	4550	4573	±3%	0.10
NTCG164LH154JTDS	150,000	±5%	4485	4533	4550	4573	±3%	0.08

150°C RESPONSE COUNTERPARTS (OPERATING TEMPERATURE RANGE : -40 to 150°C)

Part No.	Resistance [25°C] (Ω)	Resistance tolerance	B constant [25/50°C] (K)	B constant [25/75°C] (K)	B constant [25/85°C] (K)	B constant [25/100°C] (K)	B constant tolerance	Permissible operating current [25°C] (mA)
NTCG163JF103FT1S	10,000	±1%	3380	3422	3435	3453	±1%	0.31
NTCG163JX103DT1S	10,000	±0.5%	3380	3422	3435	3453	±0.7%	0.31
NTCG164KF104FT1S	100,000	±1%	4419	4468	4485	4509	±1%	0.10

⚠ Please be sure to request delivery specifications that provide further details on the features and specifications of the products for proper and safe use.
Please note that the contents may change without any prior notice due to reasons such as upgrading.

NTC Thermistors

Product compatible with RoHS directive

Compatible with lead-free solders

AEC-Q200

Automotive grade:Corresponding to 125,150°C

NTCG series RT table

RT CONVERSION TABLE: 100Ω to 22kΩ

Part No.	NTCG □□ 3E □ 101 to	NTCG □□ 4B □ 222 to	NTCG □□ 4B □ 472 to	NTCG □□ 3J □ 103 to	NTCG □□ 4B □ 103 to	NTCG □□ 4L □ 223 to
Resistance	100Ω	2.2 kΩ	4.7 kΩ	10 kΩ	10 kΩ	22 kΩ
B constant(25/85°C)	3250	4100	4100	3435	4100	4550
B constant(25/50°C)	3244	4096	4067	3380	4067	4485
temperature (°C)	Resistance (kΩ)	Resistance (kΩ)	Resistance (kΩ)	Resistance (kΩ)	Resistance (kΩ)	Resistance (kΩ)
-40	1.96	91.91	180.7	188.5	384.4	1120
-35	1.48	64.79	128.5	144.3	273.4	780.9
-30	1.13	46.23	92.51	111.3	196.8	550.8
-25	0.87	33.37	67.35	86.6	143.3	392.7
-20	0.68	24.36	49.56	67.8	105.4	282.9
-15	0.53	17.97	36.84	53.46	78.37	205.8
-10	0.42	13.39	27.65	42.45	58.83	151.1
-5	0.33	10.08	20.94	33.93	44.56	112.0
0	0.269	7.655	16.01	27.28	34.06	83.71
5	0.218	5.868	12.34	22.07	26.25	63.10
10	0.177	4.536	9.583	17.96	20.39	47.94
15	0.146	3.536	7.503	14.70	15.96	36.71
20	0.120	2.779	5.917	12.09	12.59	28.32
25	0.100	2.200	4.700	10.00	10.00	22.00
30	0.084	1.755	3.758	8.31	7.997	17.21
35	0.070	1.410	3.025	6.94	6.437	13.55
40	0.059	1.140	2.450	5.826	5.213	10.74
45	0.050	0.928	1.996	4.911	4.248	8.565
50	0.043	0.760	1.636	4.158	3.481	6.871
55	0.037	0.626	1.348	3.536	2.869	5.543
60	0.032	0.519	1.117	3.019	2.377	4.497
65	0.028	0.433	0.930	2.588	1.979	3.668
70	0.024	0.363	0.779	2.227	1.657	3.007
75	0.021	0.305	0.655	1.924	1.393	2.478
80	0.018	0.258	0.553	1.668	1.177	2.052
85	0.016	0.220	0.469	1.451	0.999	1.707
90	0.014	0.188	0.400	1.267	0.851	1.426
95	0.013	0.161	0.342	1.110	0.729	1.197
100	0.011	0.139	0.294	0.975	0.626	1.009
105	0.010	0.120	0.254	0.860	0.540	0.853
110	0.009	0.104	0.220	0.760	0.468	0.725
115	0.008	0.091	0.191	0.674	0.406	0.618
120	0.007	0.079	0.166	0.599	0.354	0.529
125	0.006	0.069	0.146	0.534	0.310	0.454
130	—	—	—	0.478	—	—
135	—	—	—	0.428	—	—
140	—	—	—	0.385	—	—
145	—	—	—	0.346	—	—
150	—	—	—	0.313	—	—

* The ends "1S ○," refer to 150°C divisions

NTC Thermistors

Product compatible with RoHS directive

Compatible with lead-free solders

Automotive grade: Corresponding to 125,150°C

AEC-Q200

NTCG series RT table

RT CONVERSION TABLE: 47kΩ to 150kΩ

Part No.	NTCG □□ 4L □ 473 to	NTCG □□ 4B □ 683 to	NTCG □□ 4K □ 104 to	NTCG □□ 4E □ 104 to	NTCG □□ 4L □ 104 to	NTCG □□ 4L □ 154 to
Resistance	47 kΩ	68 kΩ	100 kΩ	100 kΩ	100 kΩ	150 kΩ
B constant(25/85°C)	4550	4150	4485	4308	4550	4550
B constant(25/50°C)	4485	4085	4419	4250	4485	4485
temperature (°C)	Resistance (kΩ)	Resistance (kΩ)	Resistance (kΩ)	Resistance (kΩ)	Resistance (kΩ)	Resistance (kΩ)
-40	2392	2409	4864	4251	5089	7634
-35	1668	1719	3400	3005	3549	5324
-30	1177	1246	2405	2149	2503	3755
-25	838.9	916.0	1720	1554	1785	2677
-20	604.3	681.0	1243	1135	1286	1929
-15	439.6	511.4	907.6	837.8	935.3	1403
-10	322.8	387.4	669.0	624.1	686.9	1030
-5	239.2	295.9	497.6	469.1	509.0	763.5
0	178.8	227.7	373.4	355.6	380.5	570.7
5	134.8	176.5	282.5	271.8	286.8	430.2
10	102.4	137.7	215.5	209.4	217.9	326.9
15	78.42	108.2	165.6	162.5	166.9	250.3
20	60.50	85.51	128.2	127.0	128.7	193.1
25	47.00	68.00	100.0	100.0	100.0	150.0
30	36.77	54.40	78.51	79.23	78.23	117.3
35	28.95	43.77	62.05	63.18	61.60	92.40
40	22.95	35.41	49.34	50.68	48.82	73.23
45	18.30	28.81	39.48	40.90	38.93	58.40
50	14.68	23.56	31.77	33.19	31.23	46.84
55	11.84	19.37	25.71	27.09	25.20	37.79
60	9.607	16.00	20.92	22.22	20.44	30.66
65	7.836	13.28	17.12	18.32	16.67	25.01
70	6.425	11.08	14.07	15.18	13.67	20.50
75	5.294	9.284	11.62	12.64	11.26	16.89
80	4.383	7.814	9.649	10.58	9.325	13.99
85	3.646	6.604	8.046	8.887	7.757	11.64
90	3.046	5.604	6.738	7.500	6.482	9.722
95	2.557	4.775	5.667	6.357	5.440	8.159
100	2.155	4.083	4.786	5.410	4.584	6.876
105	1.823	3.505	4.057	4.623	3.879	5.819
110	1.549	3.019	3.453	3.966	3.295	4.943
115	1.321	2.609	2.950	3.415	2.810	4.215
120	1.130	2.262	2.529	2.952	2.405	3.607
125	0.971	1.967	2.176	2.561	2.066	3.098
130	—	—	1.878	2.229	—	—
135	—	—	1.626	1.947	—	—
140	—	—	1.412	1.707	—	—
145	—	—	1.230	1.501	—	—
150	—	—	1.075	1.324	—	—

* The ends "1S ○," refer to 150°C divisions

NTC Thermistors

Automotive grade:Corresponding to 125,150°C

Product compatible with RoHS directive
Compatible with lead-free solders
AEC-Q200

Attention in the board design

BOARD DESIGN

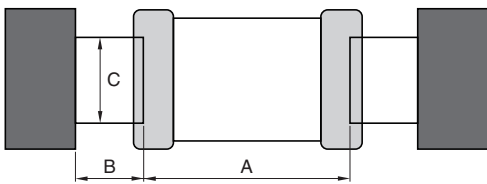
When attached to NTC substrate thermistor, amount of silver used (fillet size) has direct impact on NTC thermistor after mounting. Thus, sufficient consideration is necessary.

Set of land dimensions

(1) As the stress rises in the NTC thermistor owing to the increase in silver, breakage and cracks will occur. Cause including crack, as caution on board land design, configure the shape and dimensions so that the amount of silver is appropriate.

If you installed 2 or more parts in the Common Land, separated by a solder resist and special land of each component.

Dimensions shape



Shape symbol	Symbol		
	A	B	C
1005	0.30 to 0.50	0.35 to 0.45	0.4 to 0.6
1608	0.6 to 0.8	0.6 to 0.8	0.6 to 0.8

(2) When peak levels panning-at soldering is excessive, by solder contraction stress, mechanical-thermal stress causes a Yasuku chip crack.

In addition, when the peak level is underestimated, terminal electrode fixed strength is insufficient. This causes chip dropouts and may affect circuit reliability.

Representative example of the panning of peak levels is shown in the following.

Recommended silver dose

Solder volume overload		Solder stress is increased, and it is easy for a crack to form.
Decent solder volume		Most large serving amount Minimum prime amount
Solder volume deficit		Fixed strength is weak, and there is connection a problem and risk of loss.

Case and suggested protocol want to avoid

Example	Cases to avoid	Improvement example (land division)
Lead wire and land of part discrete doubles up		
Arrangements in the vicinity		
Arrangements of chip component's companion		

⚠ Please be sure to request delivery specifications that provide further details on the features and specifications of the products for proper and safe use. Please note that the contents may change without any prior notice due to reasons such as upgrading.

NTC Thermistors

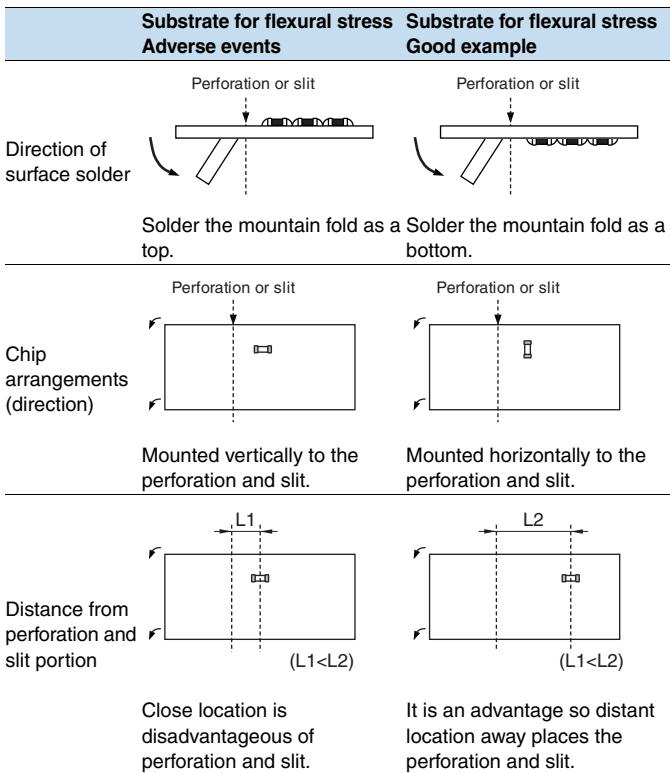
Automotive grade:Corresponding to 125,150°C

Product compatible with RoHS directive
Compatible with lead-free solders
AEC-Q200

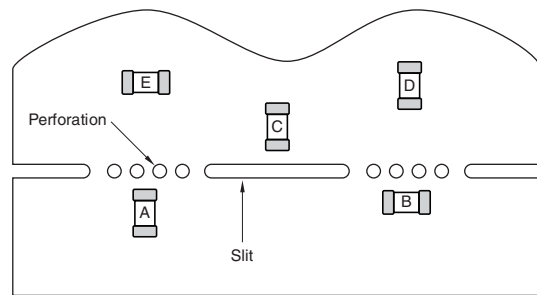
Attention in the board design

Arrangements of components

(1) I was based on camber of substrate and suggested protocol of NTC thermistor arrangement, as stress does not join to the utmost is shown in following.



(2) In payment near by board, depending on mount position of NTC PTC, as mechanical stress varies, please refer to the following diagram.



The order of $A > B = C > D > E$ eases the stress.

⚠ Please be sure to request delivery specifications that provide further details on the features and specifications of the products for proper and safe use. Please note that the contents may change without any prior notice due to reasons such as upgrading.

NTC Thermistors

Automotive grade: Corresponding to 125, 150°C

Product compatible with RoHS directive
Compatible with lead-free solders
AEC-Q200

Attention on the mounting

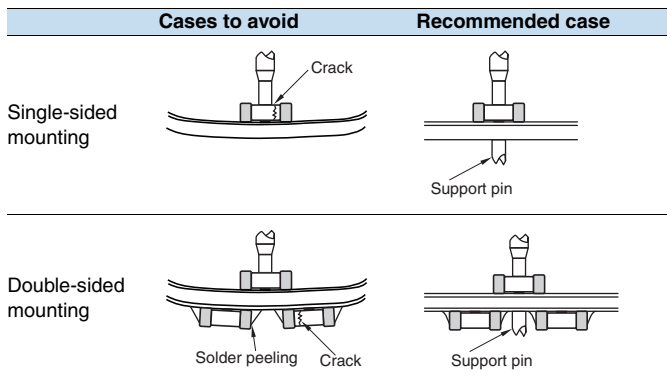
APPLICATION TO BOARD

Mounting head pressure

Under suction nozzle if dead point too, during implementation, excessive force joins of NTC thermistor low, as cause causes of crack, please use with reference to something about following.

- 1) Being set to top surface of substrate so that under suction nozzle as for dead center, substrate does not bend back, and adjust, please.
- 2) Nozzle pressure at implementation is 0.1 to 0.3 N in static load, please.
- 3) Substrate fixes up back surface of substrate with support pin in impact of suction nozzle to wely deflection to the utmost, and substrate hold deflection, please.

A representative example is shown in the following.



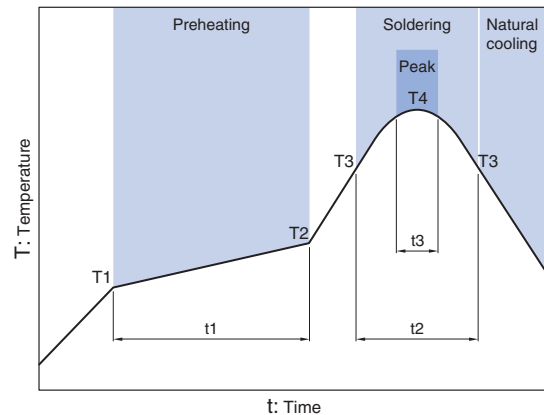
Mechanical shock that, if positioning your nail to wear, ragged edge of positionings, participates in NTC thermistor are locally, and NTC thermistor, as there is possibility of crack generated, cut the closed positioning, and maintenance and inspection, and, exchange of manage dimensions and position nail periodically, please.

SOLDERING

Significant impact is possible on the performance of NTC thermistor, flux checks something about follow, please use.

- (1) Flux uses one with 0.1wt % (Cl conversion) or less halide substance contains amounts, please. In addition, do not do this with strongly acidic objects.
- (2) Flux during is soldered (2) NTC substrate thermistor is applied the smallest amount necessary, please.
- (3) If Used soluble flux, perform thorough wash particularly, please.

Reflow temperature profile



Item	Specification	
	for eutectic mixture solder	For lead-free solder
Preheating temperature	160 to 180°C	150 to 180°C
Solder melting temperature	200°C	230°C
Maximum temperature	240°C max.	260°C max.
Preheating time	100s max.	120s max.
Time to reach higher than the solder melting temperature	30s max.	40s max.
number of possible reflow cycles	2 max.	2 max.

SOLDERING IRON

(1) The tip temperature and also by (1) types of soldering irons, the size of the substrate, and the geometry of the land pattern. Being earlier, but when as there is possibility that crack occurs in the heat anderson impaction, point soldering iron temperature is high, please do solder work within the following conditions.

Temperature of iron tips (°C)	Wattage (W)	Point shape (mm)	Soldering time (Second)	Frequency
350max.	20max.	ø3.0max.	5 max.	Within each terminal once (Within total of twice)

(2) Direct iron tip is in contact with the (2) NTC thermistor body, and the strain owing to thermal shock in particular grows even if a crack is generated. Therefore, please do not touch it directly to the terminal electrodes.

NTC Thermistors

Automotive grade: Corresponding to 125,150°C

Attention after mounting

CLEANING

(1) If cleaning liquid is inappropriate, residues and other foreign body of fluxes builds up on NTC PTC surface, and can degrade the performance of NTC thermistor (particularly the insulation resistance).

(2) Wash conditions may compromise performance of NTC thermistor if they are improper (wash due, wash excess).

2-1) For wash due

- (a) By substance of a system in flux residue halide, metal including terminal electrodes may experience corrosion.
- (b) Substance of a system in flux residue halide builds up on NTC PTC surface, and reduces the insulation resistance.
- (c) Soluble flux makes comparisons of colophony series flux, and there is event with trends of significant (1) and (2).

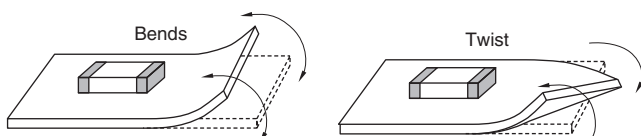
2-2) For excess wash

- (1) Owing to lavage, NTC PTC surface deteriorates, and reduces performance of NTC thermistor.
- (2) In ultrasonography, when output is passed, substrate resonates size, and crack occurs in body and sprang of NTC thermistor in vibration of substrate. Since this may reduce the strength of the terminal electrode, please note the following conditions.
 - Output Ultrasound output
 - Frequency Ultrasonic frequency
 - Cleaning time Ultrasound cleaning time

2-3) Concentration including halogen that when cleaning liquid to pollution, when you released is higher, and may cause similar of results into wash due.

SUBSTRATE HANDLING AFTER COMPONENT MOUNTING

(1) When substrate is divided, a flexible so that show in following diagram to substrate, and is given by stress including twist, as there is possibility that crack occurs of NTC thermistor, please check that stress is within acceptable limits.

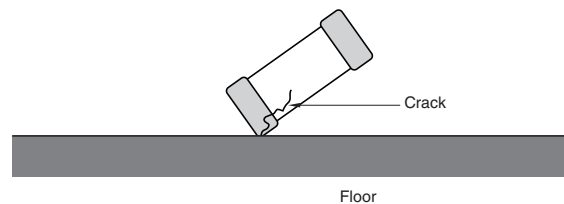


(2) During each substrate operational check, push pressure with contact failure of check pin of boards checkers of check pin may be toned up to be prevented. As substrate is bent under loading, NTC thermistor is broken owing to stress. There is also the possibility that solder on the terminal electrode will peel off. Follow the diagram for reference, and check that the substrate bends, please.

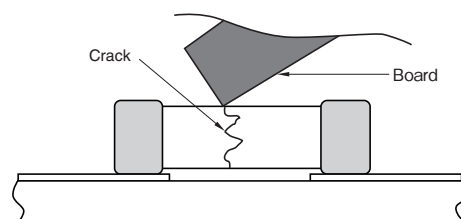
Item	Cases to avoid	Recommended case
Substrate sags		

SINGLE-PART COMPONENT HANDLING

(1) To drop impact, as there is possibility that breakage and crack is entered, do not NTC thermistor that (1) NTC thermistor falls.



(2) At stacking storage after implementation and treatment of substrate, corner of boards is regarded as NTC thermistor. Please be careful, as there is the possibility that breakage and cracks will occur on impact.



NTC Thermistors

Automotive grade: Corresponding to 125,150°C

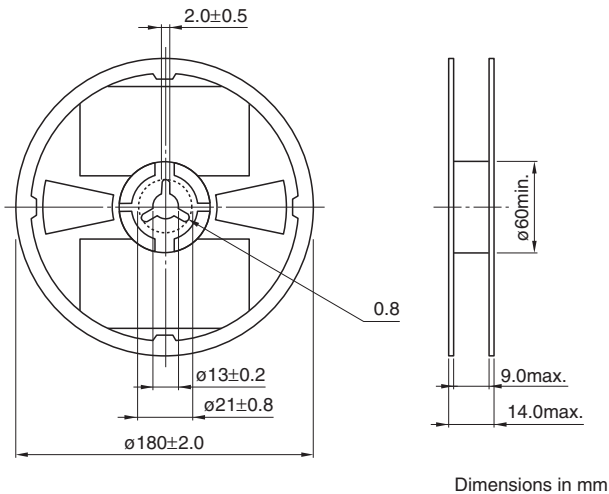
Product compatible with RoHS directive

Compatible with lead-free solders

AEC-Q200

Packaging style

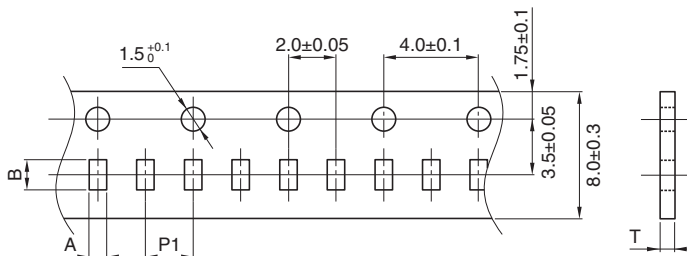
REEL DIMENSIONS



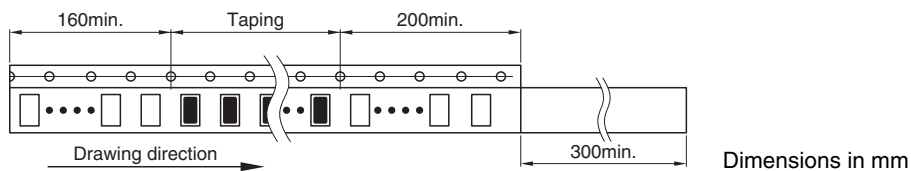
PACKAGE QUANTITY, PRODUCT WEIGHT

Type	Package quantity (pieces/reel)	Individual weight (mg)
NTCG10	10,000	2.5
NTCG16	4,000	5.0

TAPE DIMENSIONS



Type	A	B	P1	T
NTCG10	0.65+0.05/-0.1	1.15+0.05/-0.1	2±0.05	0.65max.
NTCG16	1.1±0.2	1.9±0.2	4±0.1	1.1max.



Please be sure to request delivery specifications that provide further details on the features and specifications of the products for proper and safe use. Please note that the contents may change without any prior notice due to reasons such as upgrading.

Product compatible with RoHS directive
Compatible with lead-free solders
AEC-Q200

NTC Thermistors

Automotive grade:Corresponding to 125,150°C

Description and definition of terms

INITIAL RESISTANCE

Thermistor resistance is a function of absolute temperature as indicated by the following relationship:

$$R=R_0 \cdot \exp B \left(\frac{1}{T} - \frac{1}{T_0} \right) \dots\dots\dots (1)$$

Here R₀, R(kΩ) are the respective resistance values when the surrounding temperature is T₀, T(K). B is the thermistor constant(B constant below).

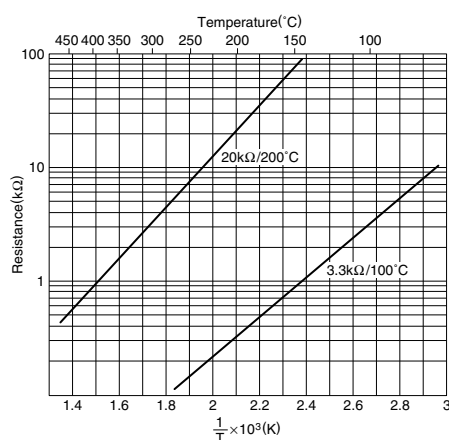
B CONSTANT

The B constant is found from the following equation:

$$B= \frac{2.3026(\log R - \log R_0)}{\frac{1}{T} - \frac{1}{T_0}} \dots\dots\dots (2)$$

This B characteristic is indicated by the slope of the linear plot of log R-1/T inverse absolute temperature. The B constant value is generally in the vicinity of 2500K to 5000K. B constant values of 3000K to 4000K are frequently used for measurements.

Resistance-temperature characteristics (Fig.1)



TEMPERATURE COEFFICIENT

The relationship between temperature coefficient α and B becomes:

$$\alpha = \frac{1}{R} \cdot \frac{dR}{dT} = - \frac{B}{T^2} \times 100(\%/^{\circ}C) \dots\dots\dots (3)$$

The negative sign of the temperature coefficient indicates that the temperature coefficient decreases as both thermistor resistance and temperature rise. If B is taken as 3400K, the temperature coefficient found at 20°C (293.15K) becomes -4%/°C.

⚠ Please be sure to request delivery specifications that provide further details on the features and specifications of the products for proper and safe use. Please note that the contents may change without any prior notice due to reasons such as upgrading.

HEAT DISSIPATION COEFFICIENT

Temperature rises due to thermal energy formed as electrical current flows through the thermistor. The thermistor temperature T_0 is then related to the surrounding temperature T_a and the electrical input W :

$$W = k(T_0 - T_a) = V \cdot I \text{ (mW)} \quad (4)$$

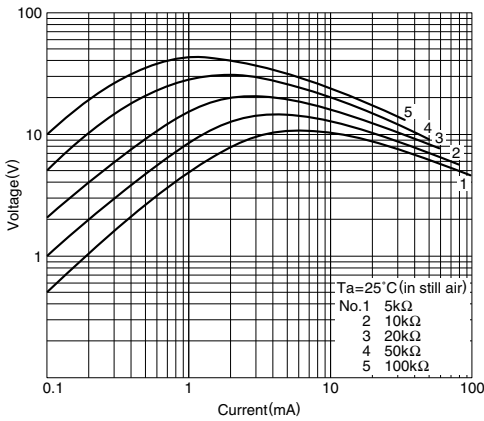
$$k = \frac{W}{T_0 - T_a} \text{ (mW/}^\circ\text{C)} \quad (5)$$

This k value is the heat dissipation coefficient, which represents the additional electrical power (mW/°C) needed to raise the thermistor temperature by 1°C. This heat dissipation coefficient varies with changes in the measurement and environmental conditions. When a thermistor is used for temperature measurement, it is naturally important to lower the applied electrical current as much as possible in order to reduce measurement error resulting from self heating.

VOLTAGE - CURRENT CHARACTERISTIC

The voltage - current characteristic indicates the drop in voltage as electrical current through the thermistor is gradually increased.

Voltage-current characteristics (Fig.2)



HEATING TIME CONSTANT

The time period required to heat up a thermistor from a certain temperature T_0 over a target temperature rise is called the heating time constant. Various types of heating time constants are indicated by the symbols shown in Table 1 as determined by the percent change from T_0 toward the target temperature. The standard change is typically taken to be 63.2%.

Thermal time constants (Fig.3)

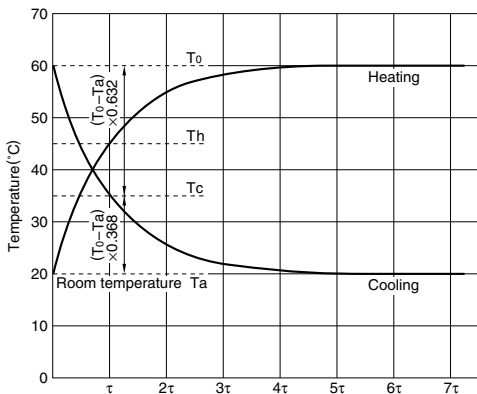


Table 1 Heating time constant and temperature change ratio

Code	Rate of change (%) for $T_0 - T_a$
τ	63.2
2τ	86.5
3τ	95.0
4τ	98.2
5τ	99.4
6τ	99.8
7τ	99.9

PERMISSIBLE OPERATING CURRENT

This is the maximum load current limit below 1°C temperature rise due to thermistor self-heating. It's possible to express it in the following system.

$$\text{Maximum allowed current [mA]} = \sqrt{\text{Heat dissipation constant [mW/}^\circ\text{C]} \div \text{Resistance [}\Omega\text{]}}$$

Please be sure to request delivery specifications that provide further details on the features and specifications of the products for proper and safe use. Please note that the contents may change without any prior notice due to reasons such as upgrading.