



Chipsmall Limited consists of a professional team with an average of over 10 year of expertise in the distribution of electronic components. Based in Hongkong, we have already established firm and mutual-benefit business relationships with customers from,Europe,America and south Asia,supplying obsolete and hard-to-find components to meet their specific needs.

With the principle of “Quality Parts,Customers Priority,Honest Operation,and Considerate Service”,our business mainly focus on the distribution of electronic components. Line cards we deal with include Microchip,ALPS,ROHM,Xilinx,Pulse,ON,Everlight and Freescale. Main products comprise IC,Modules,Potentiometer,IC Socket,Relay,Connector.Our parts cover such applications as commercial,industrial, and automotives areas.

We are looking forward to setting up business relationship with you and hope to provide you with the best service and solution. Let us make a better world for our industry!



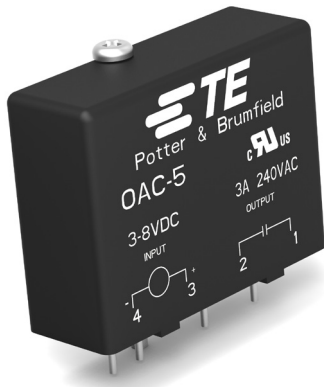
Contact us

Tel: +86-755-8981 8866 Fax: +86-755-8427 6832

Email & Skype: info@chipsmall.com Web: www.chipsmall.com

Address: A1208, Overseas Decoration Building, #122 Zhenhua RD., Futian, Shenzhen, China





OAC Series

AC Output Modules

cULus File E29244

Users should thoroughly review the technical data before selecting a product part number. It is recommended that users also seek out the pertinent approvals files of the agencies/laboratories and review them to ensure the product meets the requirements for a given application.

Features

- .6" (15.2mm) thick package.
- 4000V rms optical isolation.
- High immunity to false operation.
- Series compatible.
- Output modules can be controlled from sinking or sourcing logic.
- Compatible with 2IOM series mounting boards.

Engineering Data

- Switch Form:** 1 Form A (SPST-NO)
- Duty:** Continuous.
- Operating Temperature:** -30°C to +80°C.
- Storage Temperature:** -30°C to +100°C.
- Potting Compound Flammability:** UL94V-0.
- Solderability:** 260°C for 5 seconds, maximum.
- Approximate Weight:** 1.38 oz. (35g).

Ordering Information

Typical Part Number >	OAC	-5	A
1. Basic Series: OAC = AC output module — black case			
2. Input Voltage: 5 = 5VDC 15 = 15VDC 24 = 24VDC			
3. Output: Blank = 3A, 12-120VAC, zero voltage turn-on output A = 3A, 24-280VAC, zero voltage turn-on output H = 5A, 24-280VAC, zero voltage turn-on output R = 24-280VAC, Random Turn-On			

Our authorized distributors are more likely to maintain the following items in stock for immediate delivery.

- | | | |
|--------|--------|---------|
| OAC-5 | OAC-5H | OAC-24 |
| OAC-5A | OAC-15 | OAC-24A |

Input Specifications

Parameter	Conditions	Units	OAC-5 OAC-5A OAC-5H OAC-5R			OAC-15 OAC-15A OAC-15H OAC-15R			OAC-24 OAC-24A OAC-24H OAC-24R		
			Min.	Typ.	Max.	Min.	Typ.	Max.	Min.	Typ.	Max.
Control Voltage Range V_{IN}		VDC	3	5	8	9	15	18	18	24	32
Must Operate Voltage $V_{IN(OP)}$ (Min.)		VDC			3			9			18
Must release Voltage $V_{IN(REL)}$ (Min.)		VDC	1			1			1		
Input Current (Max.)	@ V_{IN} =Nominal	mADC		2 - 10			6 - 12			4 - 12	
Input Resistance R_{IN}		Ohms		800			1500			2600	

PIN-3 must be positive with respect to PIN-4 for correct operation.

OAC Series (Continued)

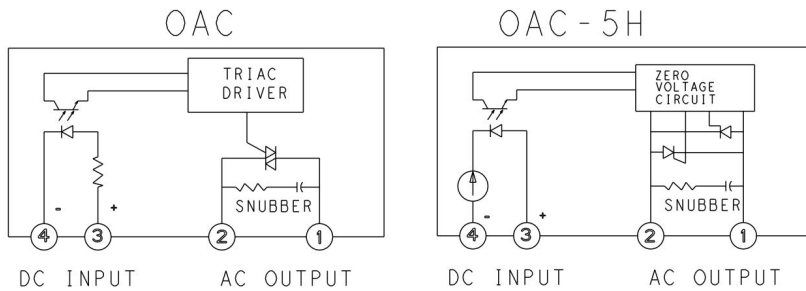
AC Output Modules

Output Specifications (47 to 63 Hz, @+25°C unless otherwise specified)

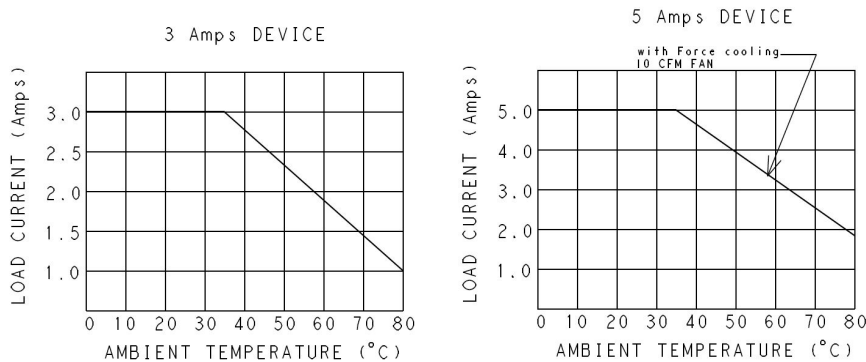
Parameter	Conditions	Units	OAC-5 OAC-15 OAC-24			OAC-5A OAC-15A OAC-24A			OAC-5H OAC-15H OAC-24H			OAC-5R OAC-15R OAC-24R		
			Min.	Typ.	Max.	Min.	Typ.	Max.	Min.	Typ.	Max.	Min.	Typ.	Max.
Load Voltage VL		V rms	12		120	24		280	24		280	24		280
Repetitive Blocking Voltage		V peak			400			600			600			600
Load Current IL*		A rms	.05		3	.05		3	.05		5	.05		5
Single Cycle Surge Current		A peak		208			208			300				300
Leakage Current (Off-State)	VL=280VAC	mA rms			5			5			5			5
On-State Voltage Drop	IL=Max.	V rms			1.8			1.8			1.6			1.6
Static dv / dt (Off-State)		V/μs		475			475			300			300	
Turn-On Time	@f=60/50 Hz.	ms		8.3 / 10			8.3 / 10			8.3 / 10			0.1	
Turn-Off Time		ms		8.3 / 10			8.3 / 10			.3 / 10			8.3	
HP / Rating	@ 240VAC	HP		1/4			1/4			1/2			1/2	

* See Derating curve

OAC Operating Diagram



OAC Derating Diagram



Outline Dimensions

