



Chipsmall Limited consists of a professional team with an average of over 10 year of expertise in the distribution of electronic components. Based in Hongkong, we have already established firm and mutual-benefit business relationships with customers from,Europe,America and south Asia,supplying obsolete and hard-to-find components to meet their specific needs.

With the principle of “Quality Parts,Customers Priority,Honest Operation,and Considerate Service”,our business mainly focus on the distribution of electronic components. Line cards we deal with include Microchip,ALPS,ROHM,Xilinx,Pulse,ON,Everlight and Freescale. Main products comprise IC,Modules,Potentiometer,IC Socket,Relay,Connector.Our parts cover such applications as commercial,industrial, and automotives areas.

We are looking forward to setting up business relationship with you and hope to provide you with the best service and solution. Let us make a better world for our industry!



Contact us

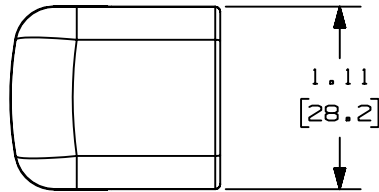
Tel: +86-755-8981 8866 Fax: +86-755-8427 6832

Email & Skype: info@chipsmall.com Web: www.chipsmall.com

Address: A1208, Overseas Decoration Building, #122 Zhenhua RD., Futian, Shenzhen, China



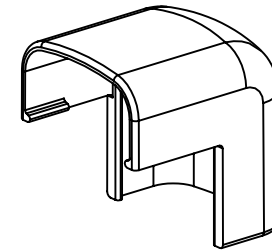
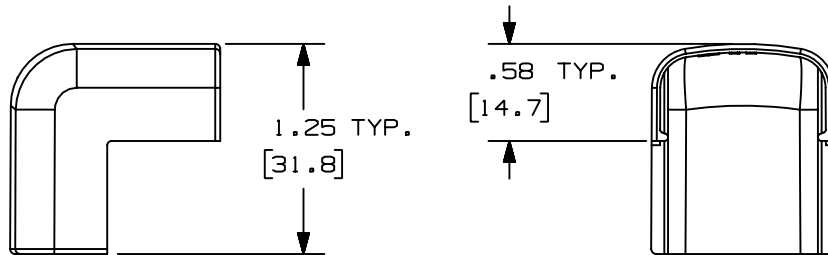
THIS COPY IS PROVIDED ON A RESTRICTED BASIS AND IS NOT TO BE USED IN ANY WAY DETRIMENTAL TO THE INTERESTS OF PANDUIT CORP.



$\triangle B$	PANDUIT P/N	WEIGHT
$\triangle C$	OCF5	0.96 LB/100 PCS. (437g/100 PCS.)

$\triangle D$ NOTES:

1. SEE CURRENT CATALOG FOR ADDITIONAL PART NUMBER SUFFIXES TO INDICATE COLOR AND OR PACKAGE QUANTITY.
2. DIMENSIONS IN PARENTHESIS ARE IN METRIC.



$\triangle E$

CAD FILENAME/LAYERS D34474BB_DC_OCF5_01.prt

					PANDUIT CORP. TINLEY PARK, ILLINOIS		
					OUTSIDE CORNER FITTING (OCF5) CUSTOMER DRAWING		
					UNLESS OTHERWISE SPECIFIED, DIMENSIONAL TOLERANCES ARE:		UNLESS OTHERWISE SPECIFIED, ALL DIMENSIONS ARE GIVEN IN INCHES, THIRD ANGLE PROJECTION.
6	7-3-02	JHN/URMHI	F.	REVISED MATERIAL IN DRAWING TITLE BLOCK.	16866	RGRD	RGRD
5	8-28-00	MSO/HIW	E.	REVISED AND REDRAWN ON CAD.	16866	HIW	HIW
4	10-3-91	DW/CF	D.	REVISED NOTE AND REMOVED COLOR FROM DRAWING.	16866		CF
3	2-28-91	DW/CF	C.	REVISED COLORS: OMIT BG, LI, LG. ADDED INT. WHITE AND INT. GRAY.	16866		WJB
2	12-2-87	LDB/WJB	B.	ADDED PART NUMBERS OCF5E1 AND OCF5L1.	16866		WJB
1	5-14-82	KJS/JK	A.	POLYSTYRENE WAS ABS.			JAK
R	9-14-81	KJS/HP		DRAWING RELEASED			HP
REV	DATE	BY	CHK	DESCRIPTION	ECN - R	CUST	SUP
					DRAWN BY KJS		MAT'L: ABS $\triangle F$
					DATE 9-10-81		SCALE FULL
					CHK'D JK		
							DWG SIZE A