



Chipsmall Limited consists of a professional team with an average of over 10 year of expertise in the distribution of electronic components. Based in Hongkong, we have already established firm and mutual-benefit business relationships with customers from,Europe,America and south Asia,supplying obsolete and hard-to-find components to meet their specific needs.

With the principle of “Quality Parts,Customers Priority,Honest Operation,and Considerate Service”,our business mainly focus on the distribution of electronic components. Line cards we deal with include Microchip,ALPS,ROHM,Xilinx,Pulse,ON,Everlight and Freescale. Main products comprise IC,Modules,Potentiometer,IC Socket,Relay,Connector.Our parts cover such applications as commercial,industrial, and automotives areas.

We are looking forward to setting up business relationship with you and hope to provide you with the best service and solution. Let us make a better world for our industry!



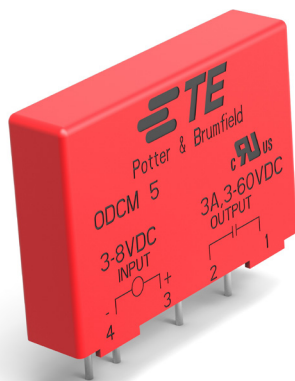
Contact us

Tel: +86-755-8981 8866 Fax: +86-755-8427 6832

Email & Skype: info@chipsmall.com Web: www.chipsmall.com

Address: A1208, Overseas Decoration Building, #122 Zhenhua RD., Futian, Shenzhen, China





ODCM Series

Slim Line DC Output Modules

 File E29244

Users should thoroughly review the technical data before selecting a product part number. It is recommended that users also seek out the pertinent approvals files of the agencies/laboratories and review them to ensure the product meets the requirements for a given application.

Features

- Slim line .4" (10.16mm) thick package.
- Foot print same as .6" (15.24mm) thick package.
- 4000V rms optical isolation.
- Color coded by function.
- High immunity to false operation.
- Series compatible.
- Output modules can be controlled from sinking or sourcing logic.
- Compatible with 2IOM series mounting boards.

Engineering Data (all I/O modules)

Switch Form: 1 Form A (SPST-NO)

Duty: Continuous.

Operating Temperature: -30°C to +80°C.

Storage Temperature: -30°C to +100°C.

Potting Compound Flammability: UL94V-0.

Solderability: 260°C for 5 seconds, maximum.

Approximate Weight: .87 oz. (22.1g).

Ordering Information

Typical Part Number >

ODCM -5 A

1. Basic Series: ODCM = Slim line DC output module — red case

2. Logic Voltage: 5 = 5VDC
15 = 15VDC
24 = 24VDC
U = 3-15VDC

3. Output: Blank = 3A, 3-60VDC output

Our authorized distributors are more likely to maintain the following items in stock for immediate delivery.

ODCM-5

Input Specifications

Parameter	Conditions	Units	ODCM-5			ODCM-15			ODCM-24			ODCM-U		
			Min.	Typ.	Max.	Min.	Typ.	Max.	Min.	Typ.	Max.	Min.	Typ.	Max.
Control Voltage Range V_{IN}		VDC	3	5	8	9	15	18	18	24	32	3	5	15
Must Operate Voltage $V_{IN(OP)}$		VDC			3			9			18			3
Must release Voltage $V_{IN(REL)}$		VDC	1			1			1			1		
Maximum Input Current	@ V_{IN} =Nominal	mADC		8 - 20			13 - 20			8 - 20			8 - 25	
Input Resistance R_{IN}		Ohms		400			900			1600			600	

PIN-3 must be positive with respect to PIN-4 for correct operation.

ODCM Series (Continued)

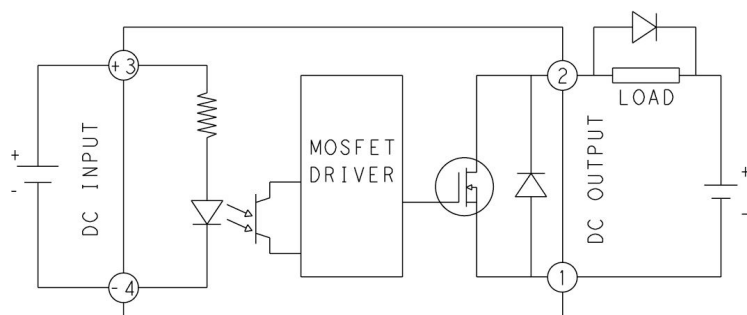
DC Output Modules

Output Specifications (@ +25°C unless otherwise specified)

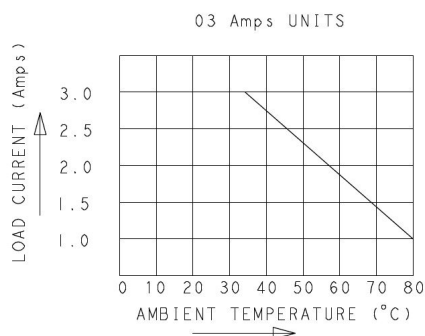
Parameter	Conditions	Units	ODCM-5 ODCM-24	ODCM-15 ODCM-U
			Min.	Typ. Max.
Load Voltage VL		V dc	3	60
Load Current		A rms	0.1	3
Maximum Surge Current for 1 Second		A peak		33
Maximum Leakage Current (Off-State)	VL=280VAC	μA rms		500
Maximum On-State Voltage Drop	IL=Max.	V rms		1.5
Maximum Turn-On Time		V/μs		0.1
Maximum Turn-Off Time	@f=60/50 Hz.	ms		0.75

PIN-1 must be positive with respect to PIN-2 for correct operation.

ODCM Operating Diagram



ODCM Derating Diagram



Outline Dimensions

