



Chipsmall Limited consists of a professional team with an average of over 10 year of expertise in the distribution of electronic components. Based in Hongkong, we have already established firm and mutual-benefit business relationships with customers from,Europe,America and south Asia,supplying obsolete and hard-to-find components to meet their specific needs.

With the principle of “Quality Parts,Customers Priority,Honest Operation,and Considerate Service”,our business mainly focus on the distribution of electronic components. Line cards we deal with include Microchip,ALPS,ROHM,Xilinx,Pulse,ON,Everlight and Freescale. Main products comprise IC,Modules,Potentiometer,IC Socket,Relay,Connector.Our parts cover such applications as commercial,industrial, and automotives areas.

We are looking forward to setting up business relationship with you and hope to provide you with the best service and solution. Let us make a better world for our industry!



Contact us

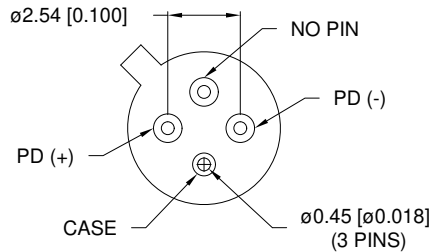
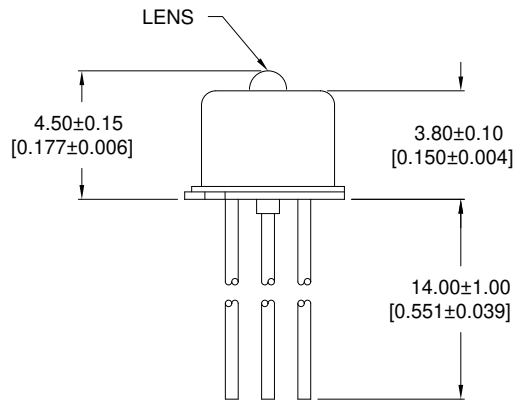
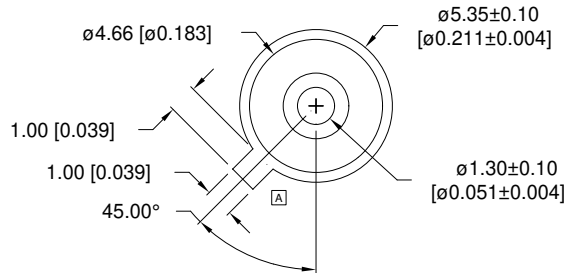
Tel: +86-755-8981 8866 Fax: +86-755-8427 6832

Email & Skype: info@chipsmall.com Web: www.chipsmall.com

Address: A1208, Overseas Decoration Building, #122 Zhenhua RD., Futian, Shenzhen, China



UNCONTROLLED DOCUMENT



PART NUMBER		REV.
OED-PPD11075G-B		A
REV.	E.C.N. NUMBER AND REVISION COMMENTS	DATE

ELECTRO-OPTICAL CHARACTERISTICS (Tc=25°C, Vr=5V).

PARAMETER	SYMBOL	MIN	TYP	MAX	UNITS
ACTIVE AREA	-		75		µm
DETECTION RANGE	-	1100	1310	1600	nm
RESPONSIVITY*	R	0.8	0.9		A/W
DARK CURRENT	Id		0.3	2	nA
CAPACITANCE	C		0.8	2.0	pF
CUTOFF FREQUENCY	fc	1.5	2.0		GHz
RISE/FALL TIME	tr/tf		0.3	0.5	ns

*\fSymbol|b0|i0|c2|p18;\fFromans.shx;=1300nm

ABSOLUTE MAXIMUM RATINGS (Tc=25°C)

PARAMETER	SYMBOL	MAX	UNITS
REVERSE VOLTAGE	Vr	25	V
REVERSE CURRENT	Ir	1	mA
FORWARD CURRENT	If	2	mA
OPERATING TEMP.	Top	40 TO + 85	°C
STORAGE TEMP.	Tstg	40 TO + 85	°C

UNCONTROLLED DOCUMENT

*UNLESS OTHERWISE SPECIFIED TOLERANCE IS ±0.25mm (±0.010")

REV. A	PART NUMBER OED-PPD11075G-B	<p>CONFIDENTIAL INFORMATION</p> <p>THE INFORMATION CONTAINED IN THIS DOCUMENT IS THE PROPERTY OF LUMEX INC. EXCEPT AS SPECIFICALLY AUTHORIZED IN WRITING BY LUMEX INC., THE HOLDER OF THIS DOCUMENT SHALL KEEP ALL INFORMATION CONTAINED HEREIN CONFIDENTIAL AND SHALL PROTECT SAME IN WHOLE OR IN PART FROM DISCLOSURE AND DISSEMINATION TO ALL THIRD PARTIES.</p> <p>RELIABILITY NOTE</p> <p>OUR MANY YEARS OF EXPERIENCE DATA ACCUMULATION INDICATE THAT SOLDER HEAT IS A MAJOR CAUSE OF EARLY AND FUTURE FAILURE. PLEASE PAY ATTENTION TO YOUR SOLDERING PROCESS.</p>	<p>290 E. HELLEN ROAD PALATINE, ILLINOIS 60067 PHONE: 1-847-359-2790 WEB: HTTP://WWW.LUMEX.COM</p>
PIN PHOTO DETECTOR.		DRAWN BY: DU/BC CHECKED BY: APPROVED BY:	DATE: 2-12-99 PAGE: 1 OF 1 SCALE: N/A