



Chipsmall Limited consists of a professional team with an average of over 10 year of expertise in the distribution of electronic components. Based in Hongkong, we have already established firm and mutual-benefit business relationships with customers from,Europe,America and south Asia,supplying obsolete and hard-to-find components to meet their specific needs.

With the principle of “Quality Parts,Customers Priority,Honest Operation,and Considerate Service”,our business mainly focus on the distribution of electronic components. Line cards we deal with include Microchip,ALPS,ROHM,Xilinx,Pulse,ON,Everlight and Freescale. Main products comprise IC,Modules,Potentiometer,IC Socket,Relay,Connector.Our parts cover such applications as commercial,industrial, and automotives areas.

We are looking forward to setting up business relationship with you and hope to provide you with the best service and solution. Let us make a better world for our industry!



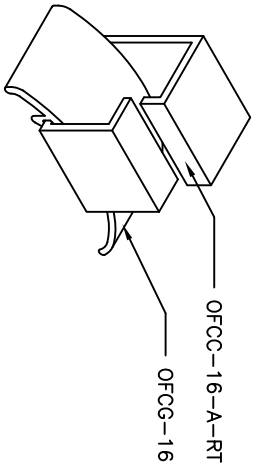
## Contact us

Tel: +86-755-8981 8866 Fax: +86-755-8427 6832

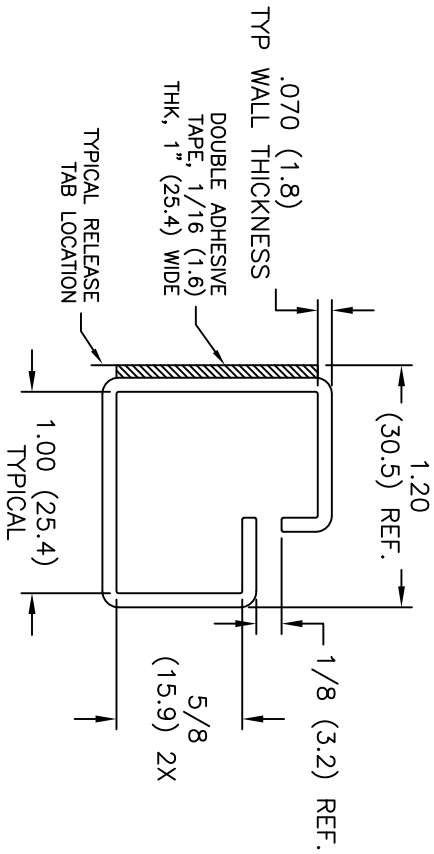
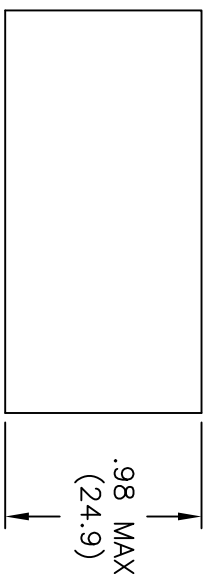
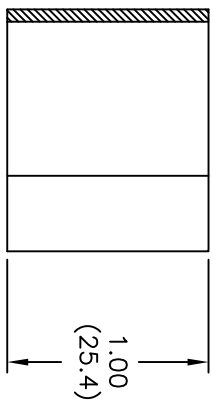
Email & Skype: info@chipsmall.com Web: www.chipsmall.com

Address: A1208, Overseas Decoration Building, #122 Zhenhua RD., Futian, Shenzhen, China

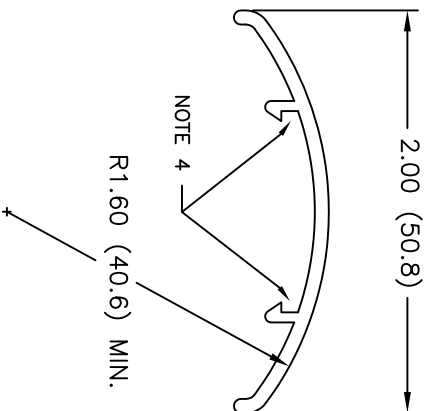




TYPICAL ASSEMBLY



OFCC-16-A-RT



OFCG-16

- NOTES:
1. MATERIAL: RIGID PVC (RMS-04).
  2. COLOR: BLACK.
  3. TAPE: ACRYLIC ADHESIVE TAPE (RMS-15)
  4. OFCG TO SNAP FIT OVER OFCC AS SHOWN IN TYPICAL ASSEMBLY

E	SEE CO 200745 FOR CHANGES	SK 01.06.12
D	SEE CO 200390 FOR CHANGES	SK 07.21.09
C	SEE ECN #1342 FOR CHANGES	SK 06.26.07
B	SEE ECN #1044	SK 08.25.05
A	CHANGED FILE NO.	SM 10.30.02
REV	DESCRIPTION	ENGR DATE

TITLE: OPTICAL FIBER COLLING CLIP		DWG IN (IN/MM)		PART #		PRINT TYPE	
TOLERANCES UNLESS NOTED .XX=±.020 .XXX=±.015 FRAC=±1/32 ANG=±1°		DWG: R.S.		APP: RICHCO INC.		DWG IN (IN/MM)	
FILE #	OFCG-OFCG	DI: 06-22-95	DI:	RICHCO INC.		SEE DWG	
MAT'L:	SEE NOTES	Po Box 804238, CHICAGO, 60680		CA			
RE:	RICHCO, INC.	(773) 539-4060					