



Chipsmall Limited consists of a professional team with an average of over 10 year of expertise in the distribution of electronic components. Based in Hongkong, we have already established firm and mutual-benefit business relationships with customers from,Europe,America and south Asia,supplying obsolete and hard-to-find components to meet their specific needs.

With the principle of “Quality Parts,Customers Priority,Honest Operation,and Considerate Service”,our business mainly focus on the distribution of electronic components. Line cards we deal with include Microchip,ALPS,ROHM,Xilinx,Pulse,ON,Everlight and Freescale. Main products comprise IC,Modules,Potentiometer,IC Socket,Relay,Connector.Our parts cover such applications as commercial,industrial, and automotives areas.

We are looking forward to setting up business relationship with you and hope to provide you with the best service and solution. Let us make a better world for our industry!



Contact us

Tel: +86-755-8981 8866 Fax: +86-755-8427 6832

Email & Skype: info@chipsmall.com Web: www.chipsmall.com

Address: A1208, Overseas Decoration Building, #122 Zhenhua RD., Futian, Shenzhen, China



UM10505

OM11057 quick start guide

Rev. 2 — 10 April 2013

User manual

Document information

Info	Content
Keywords	Capacitive switch, sensor, proximity switch, OM11057, PCF8885, PCA8885, PCA8886, evaluation board
Abstract	The OM11057 is an evaluation board which can be used to demonstrate and evaluate the PCA8886 and PCF8885 capacitive touch and proximity sensors. The board can be powered by using a Mini USB cable or battery.



Revision history

Rev	Date	Description
v.2	20130410	revised user manual
v.1	20120402	new user manual, first revision

Contact information

For more information, please visit: <http://www.nxp.com>

For sales office addresses, please send an email to: salesaddresses@nxp.com

1. Introduction

The purpose of this board is to demonstrate the capabilities of NXP's 8-channel touch sensor PCF8885 to implement buttons, switch wheels and sliders as well as proximity sensing with the dual channel PCA8886.

Features:

- Demonstration of the dual channel proximity sensor to wake up the board, one channel reserved for external sensor pad
- Demonstration of an interface with 4 buttons, a switch wheel and a slider by using an 8-channel sensor circuit in multiplexed mode
- Enables touch sensitivity through 3 mm acrylic overlay plate
- Works stand alone
- Can be powered either with 2 AA-batteries or via USB
- Feedback with a piezoelectric sounder
- Feedback with RGB diodes
- Software can be modified using LPC-link
- Low-cost Cortex-M0 LPC1114 controller board with 32 kB Flash Memory
- PCF8885, 8-channel capacitive sensor
- PCA8886, 2-channel proximity sensor. One channel reserved for external sensor
- PCF8536 LCD/LED driver

Remark:

The physical properties of any touch experiment are determined by different factors.

These factors are:

- Size of touching entity (single finger, several fingers, palm ... hand)
- Speed of approaching object
- Environmental properties like humidity, contamination

By default, the board is configured to:

- Accept a 'typical human touch', **too fast and too slow movements are screened out**, No fly or turtle will be detected
- **As a push-button. If you just touch it slightly, as it would be hot, the capacitance formed by the finger and the sensor area will be too small (just a few mm²) and will not be recognized as a touch**

The demo board should be put on a desk and not touched on the bottom side as this would short circuit the sensor inputs and cause false switching!

2. Quick start

- The demo board is powered up with the power switch
- When the power is turned on, a start-up animation will be shown and the board will be set in RGB (Red-Green-Blue) mode. This enables the user to obtain a mixture of red, green and blue with varying intensity of each color.
- A touch on the color selection buttons should be centered on the graphical icon
- The sampling frequency is optimized for a human touch, which means that very quick or slow touches will be ignored
- For switching between RGB, RED, GREEN and BLUE mode, press the appropriate button (the display will show RGB channels, RED channel, ...)
- In RGB mode, the control is similar to the living color lamp from Philips. By using the switch wheel, the LCD backlight will sweep through the entire light spectrum, and the slider will do the same for the control panel lighting. In RGB mode, there is no end and no beginning, so the wheel can be turned indefinitely in both directions (same principle for the slider). After a certain time, you will end up at the same color of course.
- When navigating in the RGB mode, if one of the colors RED, GREEN or BLUE is chosen, the scroll wheel and the slider will only affect the intensity of the color chosen in the mixture.
- If the board is not touched for 20 seconds, it will switch to sleep mode. The LEDs and the LCDs are switched off and a little red LED is switched on to indicate that the board is in sleep mode. In order to wake up the board, approach the board with your hand. The status of the board will be the same as before sleep mode

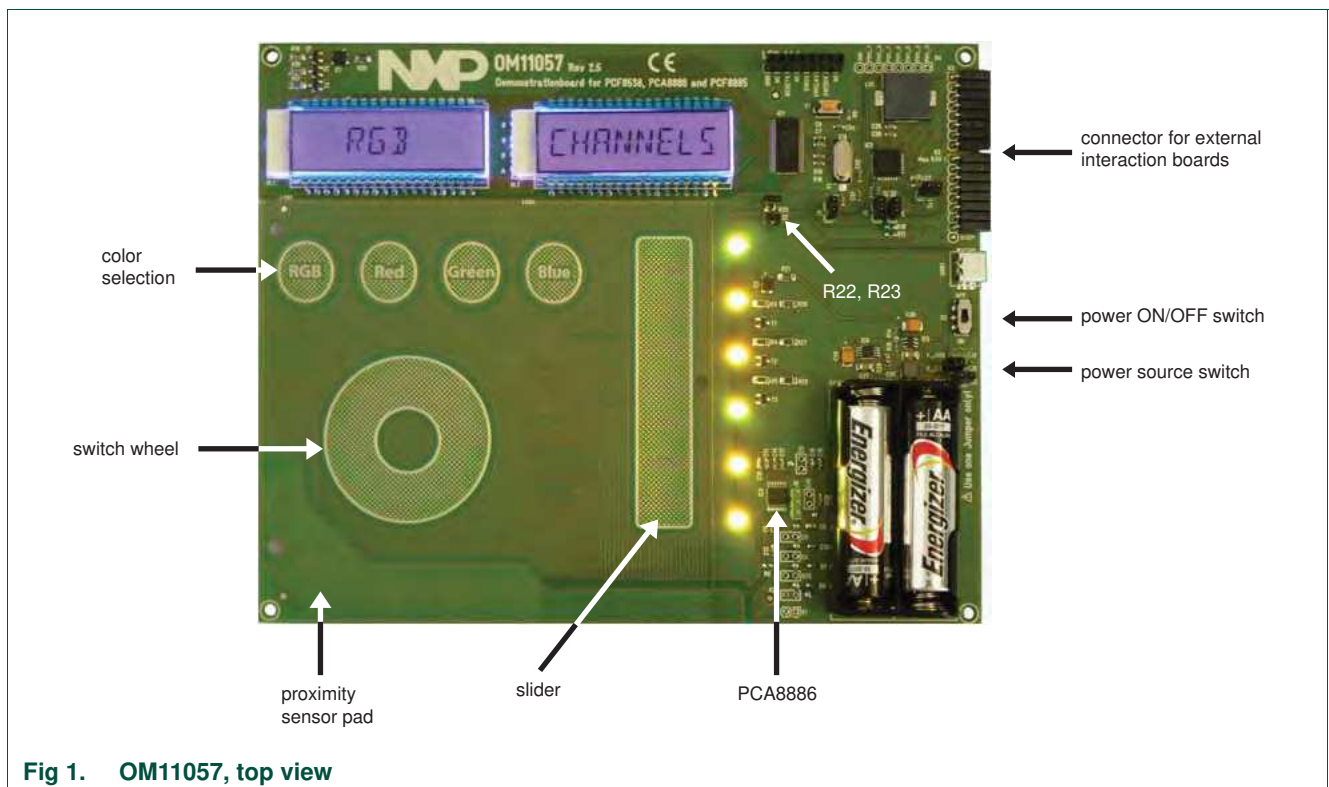


Fig 1. OM11057, top view

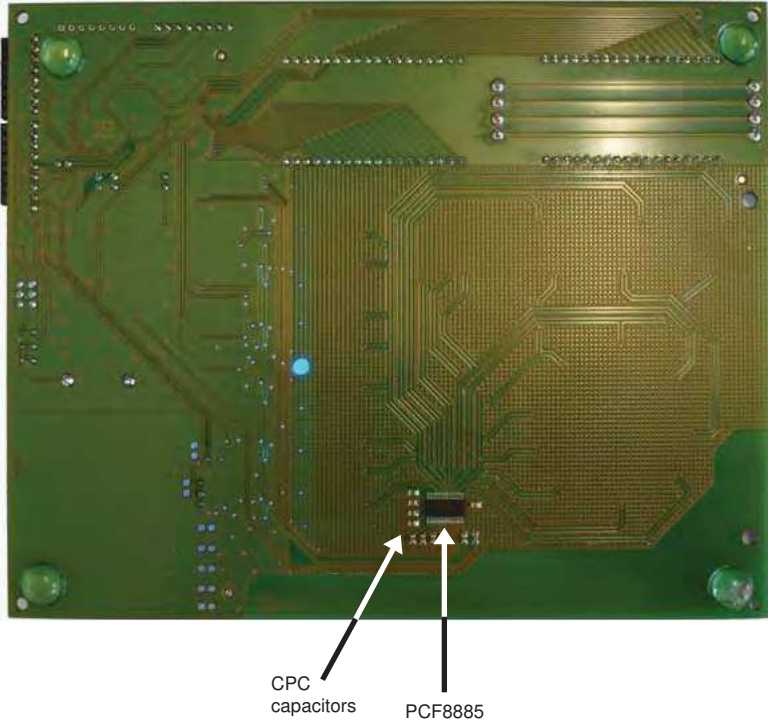


Fig 2. OM11057, bottom view

3. Board details

3.1 Power options and ON/OFF switch

[Figure 1](#) shows the ON/OFF and power source selection switches. 2 AA batteries, a USB cable or an external power supply can be used. By default, batteries are used.

3.2 PCF8885

The color selection buttons, the switch wheel, and the slider are connected to the PCF8885.

3.2.1 Sensitivity and approach speed

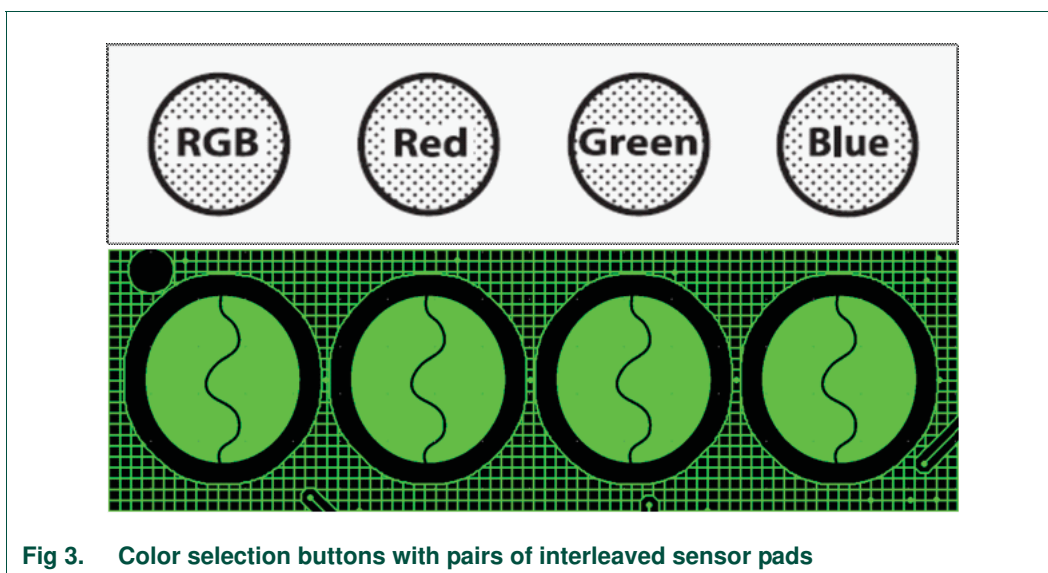
The sensitivity of the sensor channels of the PCF8885 is approximately a linear function of the value of the reservoir capacitors named CPC0 to CPC7, shown in [Figure 2](#).

The specified maximum value for this component is 470 nF and the board is assembled with this value to allow 3 mm thick acrylic overlay with margin in sensitivity.

The approach speed sensitivity is a parameter that describes the speed of an approaching object to be detected. This board is optimized for a “human touch” and filters out everything slower or faster. The approach speed sensitivity is directly set by the sampling frequency. Reducing the value of the CPC capacitors makes the range of this speed smaller as the sensitivity would be lower.

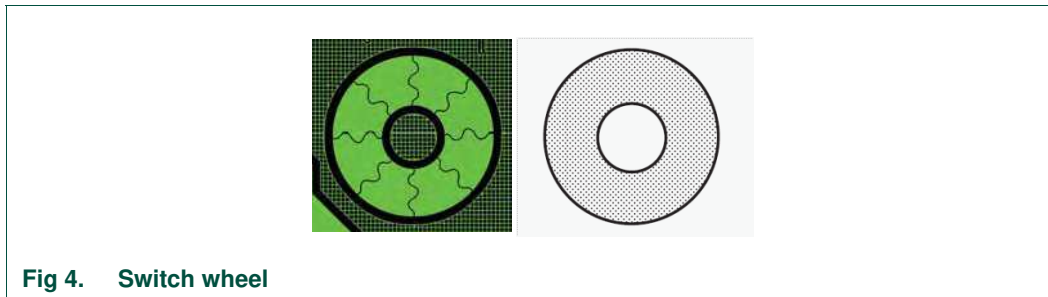
The nominal oscillator frequency is 70 kHz, the sampling frequency of the board is 1.914 kHz resulting in a switching time of 33 milliseconds. This time starts when a finger enters the coverage distance of the sensor pad and as soon as 64 consecutive samples are counted the output of the sensor is switched. Hence there is no additional time for post processing of the samples.

3.2.2 Color selection buttons



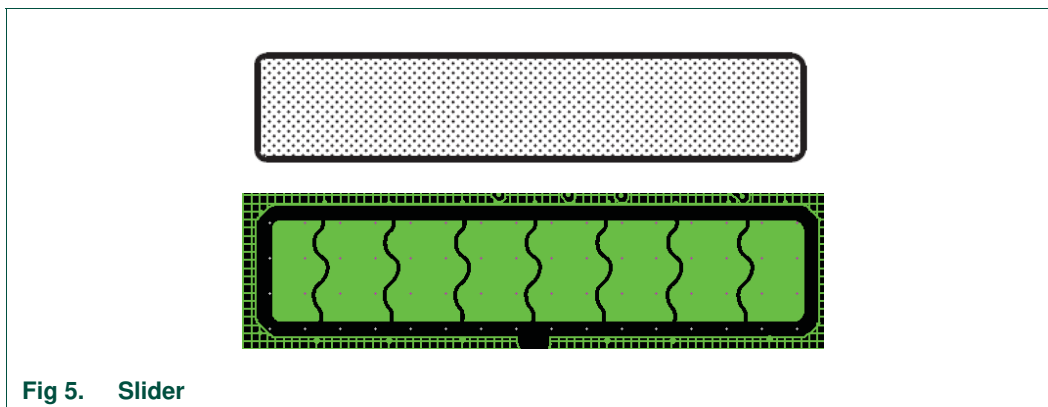
As shown in [Figure 3](#), the buttons for color selection are made of two interleaved sensor pads connected to two separate sensor channels. In order to make sure that both channels are activated, the touch should be centered on the graphical icon engraved on the acrylic overlay.

3.2.3 Switch wheel



The switch wheel is implemented as eight interleaved pairs of sensor pads connected to eight sensor channels. The touch will be recognized when moving from one to next segment.

3.2.4 Slider



The slider is implemented as seven interleaved pairs of sensor pads connected to eight sensor channels. The touch will be recognized when moving from one to next segment.

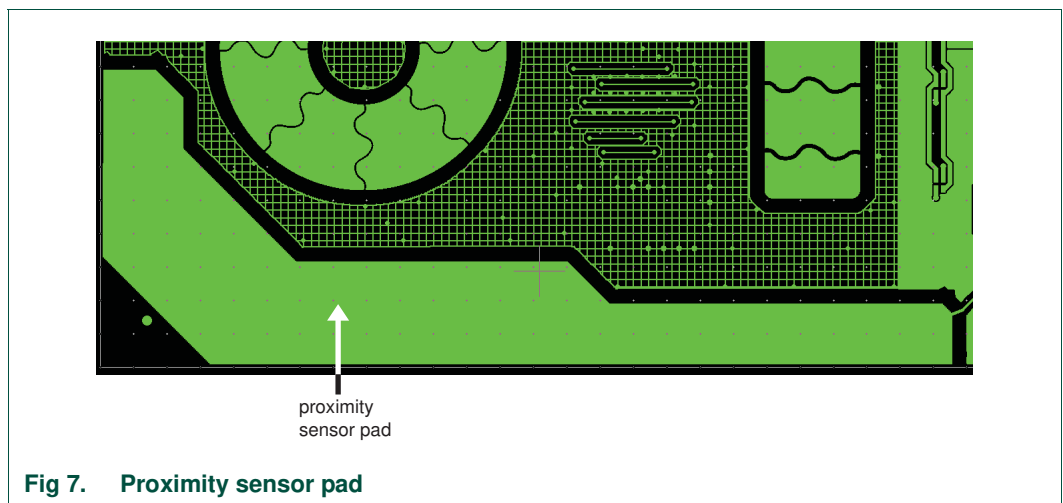
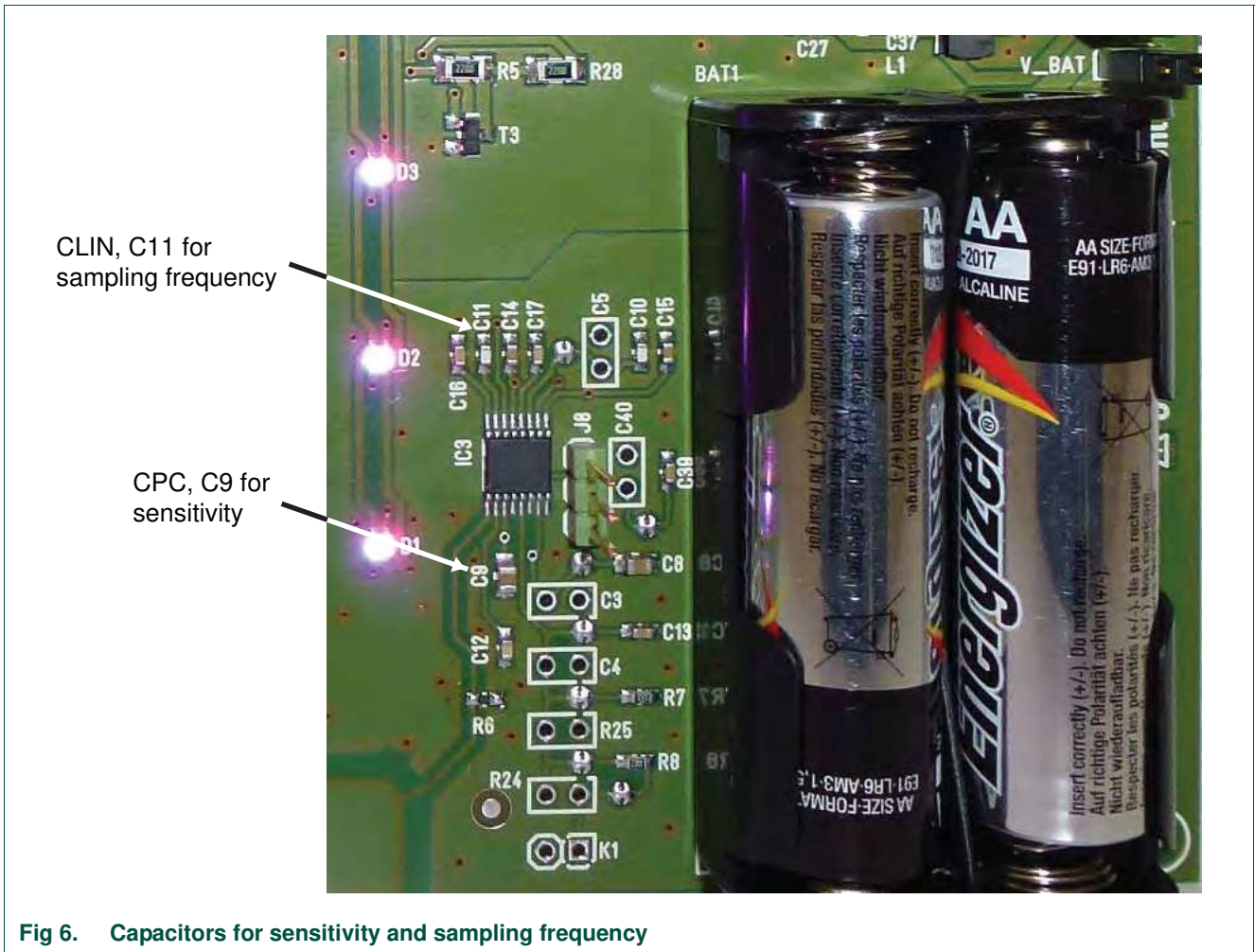
3.3 PCA8886 proximity sensor

The proximity sensor pad is connected to the PCA8886.

3.3.1 Sensitivity and approach speed

The sensitivity for the proximity sensor is set by the CPC capacitor connected to the PCA8886 as shown in [Figure 6](#). The specified maximum value for this component is 2.5 μF and the board is assembled with this value.

The approach speed sensitivity for proximity sensing is a result of the sampling frequency and set with the capacitor CLIN which has 47 pF on the board to set a sampling rate of 640 Hz and a switching time of 100 ms.



4. Add-on boards

Two add-and boards are currently available for the OM11057:

OM11057A: This is a board designed to demonstrate high sensitivity allowing thick overlays (5 mm).

OM11057B: This is a board designed to demonstrate usage of multiplexing on a flex print board.

4.1 OM11057A

Key features:

- Two PCF8885 packages: One driving buttons, the other driving a slider
- Through holes in the buttons for backlight
- PCA9535PW (a GPIO expander) drives the 16 LEDs mounted on the reverse side of the board
- Supplied from the OM11057 main board through K2 or with external power through K3
- This board is also prepared to be connected to an external I²C master through K3



Fig 8. OM11057A

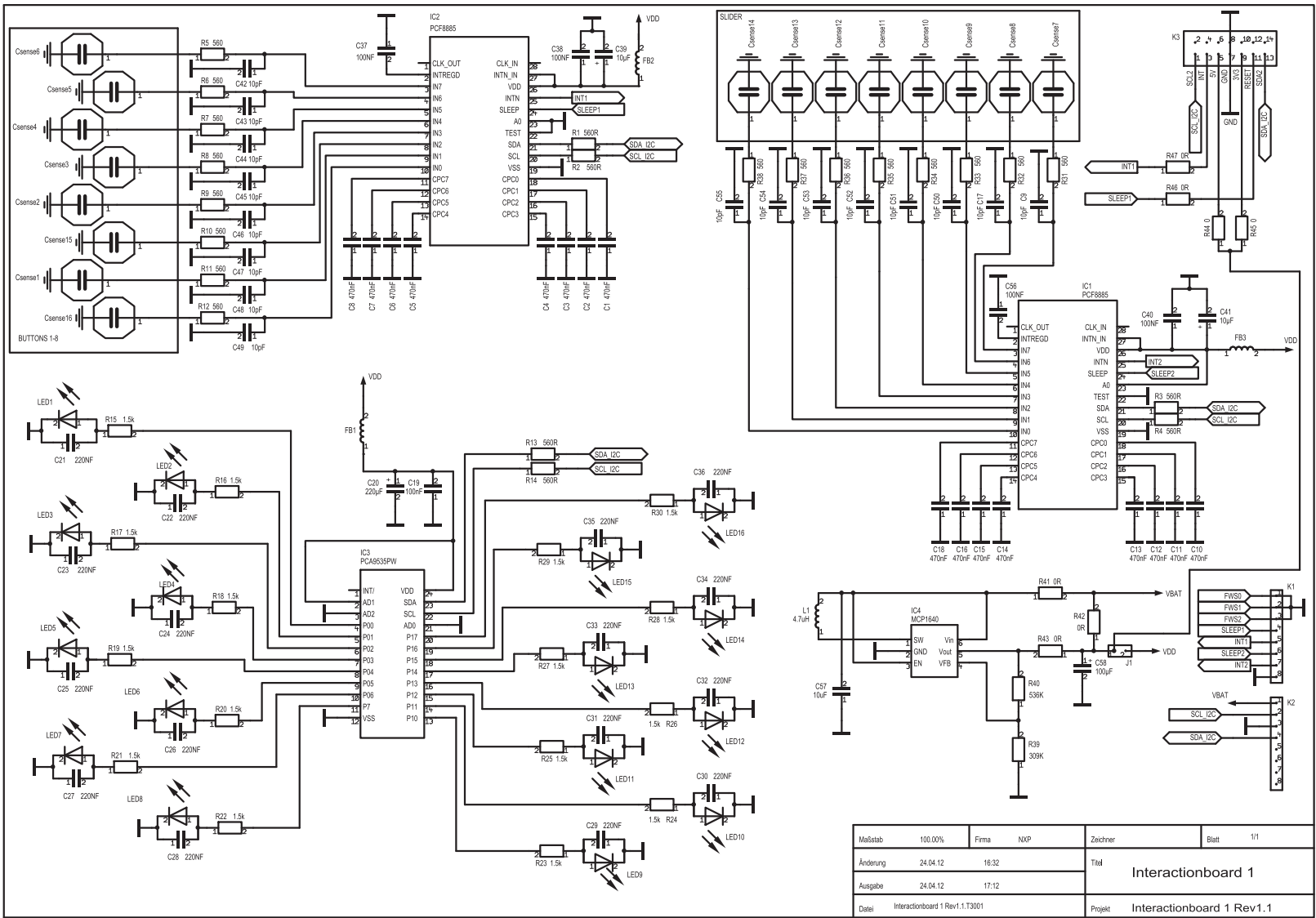


Fig 9. OM11057A circuit diagram

Maßstab	100.00%	Firma	NXP	Zechner	Blatt	1/1
Änderung	24.04.12	16.32		Titel Interactionboard 1		
Ausgabe	24.04.12	17.12				
Datum	Interactionboard 1 Rev1.1.T3001			Projekt Interactionboard 1 Rev1.1		

4.1.1 Operation with OM11057A

The PCF8885 IC on the main board has to be disconnected from the I²C bus by removing the jumpers on the R22 and R23 positions. J2 and J3 shall be inserted to use the batteries to supply the add-on board.

The operation is simple: A touch on the buttons is indicated with the LED being switched on. At the same time the choice will be displayed on the display on the main board. Moving a finger on the slider will turn on the LED corresponding to the pair of channels activated at the moment and as soon as the finger moves away, the LED will switch off.

4.1.2 Operation via external I²C master

The add-on board can also be operated through the I²C connector K3 (see [Figure 8](#) and [Figure 10](#)). 3.3 V or 5 V may be used for supply. In this case only the INT and SLEEP pins of IC1 are wired to the connector and IC2 through the I²C bus.

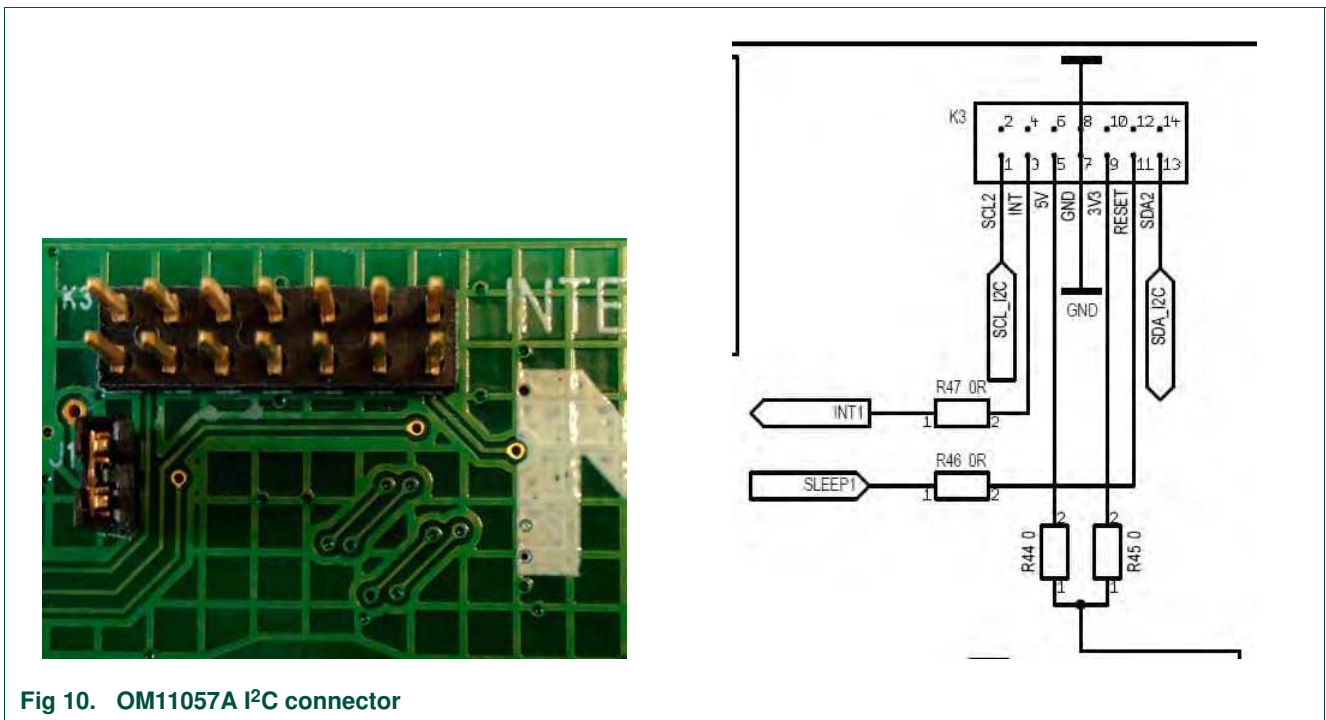
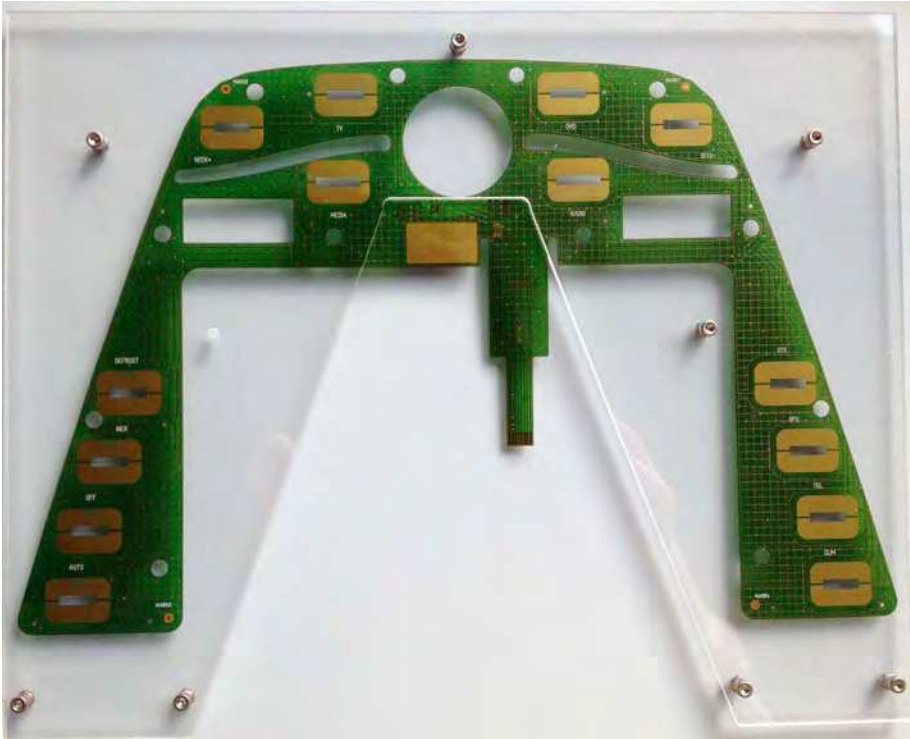


Fig 10. OM11057A I²C connector

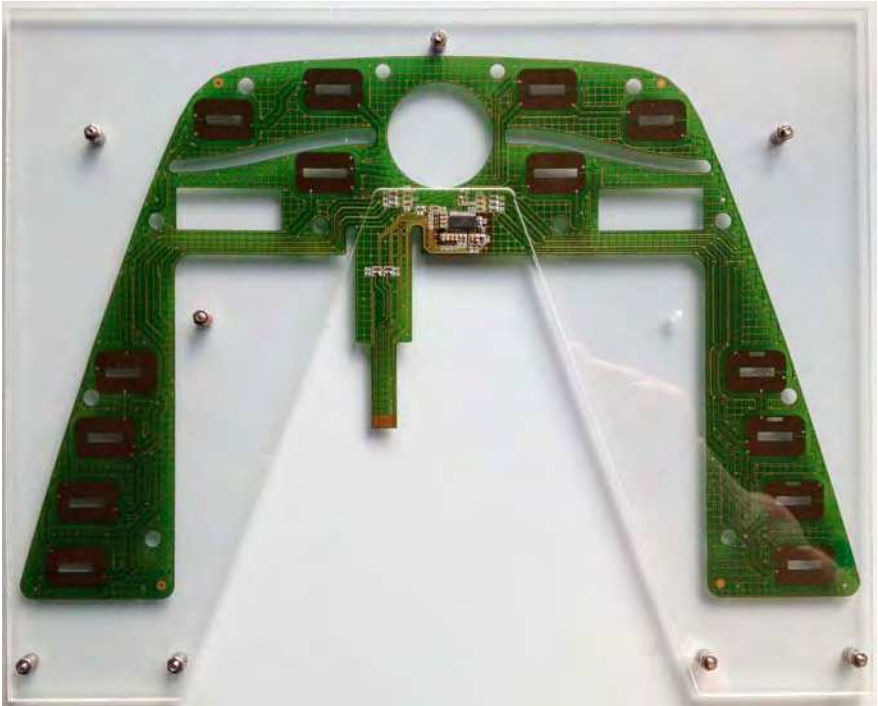
4.2 OM11057B

Key features:

- This flex print board has been designed to demonstrate implementation of 14 touch buttons by multiplexing the 8 channels of the automotive PCA8885
- PCA8885 is configured in 2-key mode such that two sensor pads creating a button have to be touched in order to report a capacitive event
- Dimension of the board: 190 mm × 296 mm
- There is an opening for backlighting LEDs in the middle of the buttons



a. Top view



b. Bottom view

Fig 11. OM11057B

4.2.1 Operation with OM11057B

This flex print can be supplied and operated with OM11057 as shown below. A touch on one of 14 buttons is indicated by displaying the corresponding function name on the display of OM11057 and a click sound with a piezzo electric buzzer will be generated as well.

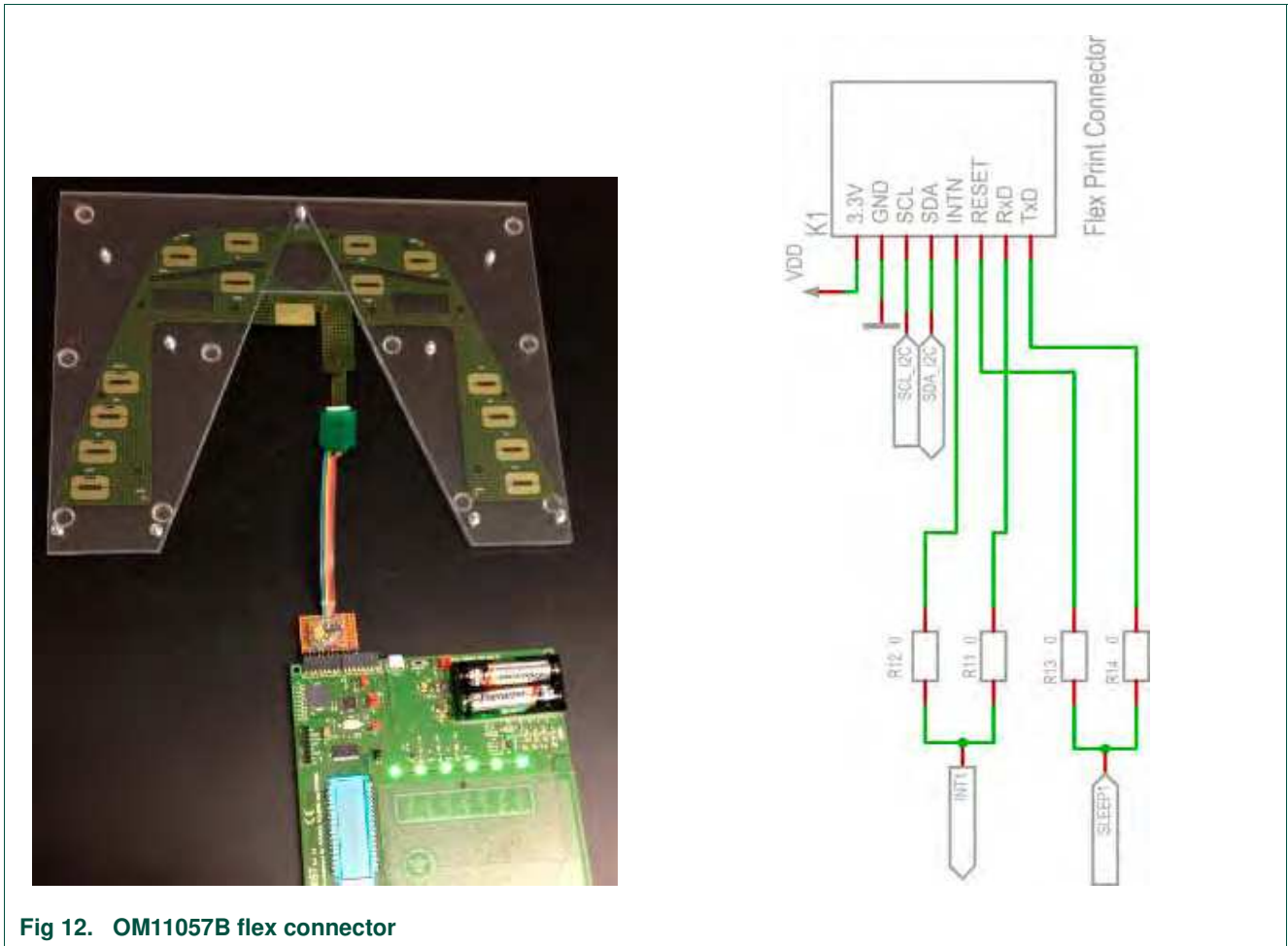


Fig 12. OM11057B flex connector

4.2.2 Operation via external I²C master

This add-on board can also be operated by an I²C master. Either 3.3 V or 5 V can be used as supply. The $\overline{\text{INT}}$ and SLEEP pins are wired to optional pins of the connector through R11, R12, R13, and R14.

If the SLEEP pin is not used, it has to be wired to GND or decoupled with several hundred nF capacitance. Otherwise, this pin will catch up disturbances such that the sensor IC fails.

5. References

- [1] **PCA8886** — Dual channel capacitive proximity switch with auto-calibration and large voltage operating range, Data Sheet
- [2] **PCF8885** — Capacitive 8-channel proximity switch with auto-calibration and very low-power consumption, Data Sheet

6. Legal information

6.1 Definitions

Draft — The document is a draft version only. The content is still under internal review and subject to formal approval, which may result in modifications or additions. NXP Semiconductors does not give any representations or warranties as to the accuracy or completeness of information included herein and shall have no liability for the consequences of use of such information.

6.2 Disclaimers

Limited warranty and liability — Information in this document is believed to be accurate and reliable. However, NXP Semiconductors does not give any representations or warranties, expressed or implied, as to the accuracy or completeness of such information and shall have no liability for the consequences of use of such information. NXP Semiconductors takes no responsibility for the content in this document if provided by an information source outside of NXP Semiconductors.

In no event shall NXP Semiconductors be liable for any indirect, incidental, punitive, special or consequential damages (including - without limitation - lost profits, lost savings, business interruption, costs related to the removal or replacement of any products or rework charges) whether or not such damages are based on tort (including negligence), warranty, breach of contract or any other legal theory.

Notwithstanding any damages that customer might incur for any reason whatsoever, NXP Semiconductors' aggregate and cumulative liability towards customer for the products described herein shall be limited in accordance with the *Terms and conditions of commercial sale* of NXP Semiconductors.

Right to make changes — NXP Semiconductors reserves the right to make changes to information published in this document, including without limitation specifications and product descriptions, at any time and without notice. This document supersedes and replaces all information supplied prior to the publication hereof.

Suitability for use — NXP Semiconductors products are not designed, authorized or warranted to be suitable for use in life support, life-critical or safety-critical systems or equipment, nor in applications where failure or malfunction of an NXP Semiconductors product can reasonably be expected to result in personal injury, death or severe property or environmental damage. NXP Semiconductors and its suppliers accept no liability for inclusion and/or use of NXP Semiconductors products in such equipment or applications and therefore such inclusion and/or use is at the customer's own risk.

Applications — Applications that are described herein for any of these products are for illustrative purposes only. NXP Semiconductors makes no representation or warranty that such applications will be suitable for the specified use without further testing or modification.

Customers are responsible for the design and operation of their applications and products using NXP Semiconductors products, and NXP Semiconductors accepts no liability for any assistance with applications or customer product design. It is customer's sole responsibility to determine whether the NXP Semiconductors product is suitable and fit for the customer's applications and products planned, as well as for the planned application and use of customer's third party customer(s). Customers should provide appropriate design and operating safeguards to minimize the risks associated with their applications and products.

NXP Semiconductors does not accept any liability related to any default, damage, costs or problem which is based on any weakness or default in the customer's applications or products, or the application or use by customer's third party customer(s). Customer is responsible for doing all necessary testing for the customer's applications and products using NXP

Semiconductors products in order to avoid a default of the applications and the products or of the application or use by customer's third party customer(s). NXP does not accept any liability in this respect.

Export control — This document as well as the item(s) described herein may be subject to export control regulations. Export might require a prior authorization from competent authorities.

Non-automotive qualified products — Unless this data sheet expressly states that this specific NXP Semiconductors product is automotive qualified, the product is not suitable for automotive use. It is neither qualified nor tested in accordance with automotive testing or application requirements. NXP Semiconductors accepts no liability for inclusion and/or use of non-automotive qualified products in automotive equipment or applications.

In the event that customer uses the product for design-in and use in automotive applications to automotive specifications and standards, customer (a) shall use the product without NXP Semiconductors' warranty of the product for such automotive applications, use and specifications, and (b) whenever customer uses the product for automotive applications beyond NXP Semiconductors' specifications such use shall be solely at customer's own risk, and (c) customer fully indemnifies NXP Semiconductors for any liability, damages or failed product claims resulting from customer design and use of the product for automotive applications beyond NXP Semiconductors' standard warranty and NXP Semiconductors' product specifications.

Evaluation products — This product is provided on an "as is" and "with all faults" basis for evaluation purposes only. NXP Semiconductors, its affiliates and their suppliers expressly disclaim all warranties, whether express, implied or statutory, including but not limited to the implied warranties of non-infringement, merchantability and fitness for a particular purpose. The entire risk as to the quality, or arising out of the use or performance, of this product remains with customer.

In no event shall NXP Semiconductors, its affiliates or their suppliers be liable to customer for any special, indirect, consequential, punitive or incidental damages (including without limitation damages for loss of business, business interruption, loss of use, loss of data or information, and the like) arising out of the use of or inability to use the product, whether or not based on tort (including negligence), strict liability, breach of contract, breach of warranty or any other theory, even if advised of the possibility of such damages.

Notwithstanding any damages that customer might incur for any reason whatsoever (including without limitation, all damages referenced above and all direct or general damages), the entire liability of NXP Semiconductors, its affiliates and their suppliers and customer's exclusive remedy for all of the foregoing shall be limited to actual damages incurred by customer based on reasonable reliance up to the greater of the amount actually paid by customer for the product or five dollars (US\$5.00). The foregoing limitations, exclusions and disclaimers shall apply to the maximum extent permitted by applicable law, even if any remedy fails of its essential purpose.

Translations — A non-English (translated) version of a document is for reference only. The English version shall prevail in case of any discrepancy between the translated and English versions.

6.3 Licenses

ICs with capacitive sensing functionality

This NXP Semiconductors IC is made under license to European Patent No. 0723339, owned by EDISEN - SENSOR SYSTEME GmbH & CO KG and counterparts. Any license fee is included in the purchase price.

6.4 Trademarks

Notice: All referenced brands, product names, service names and trademarks are the property of their respective owners.

7. Figures

Fig 1.	OM11057, top view	4
Fig 2.	OM11057, bottom view	5
Fig 3.	Color selection buttons with pairs of interleaved sensor pads	6
Fig 4.	Switch wheel	7
Fig 5.	Slider	7
Fig 6.	Capacitors for sensitivity and sampling frequency	8
Fig 7.	Proximity sensor pad	8
Fig 8.	OM11057A	9
Fig 9.	OM11057A circuit diagram	10
Fig 10.	OM11057A I ² C connector	11
Fig 11.	OM11057B	12
Fig 12.	OM11057B flex connector	13

8. Contents

1	Introduction	3
2	Quick start	4
3	Board details	6
3.1	Power options and ON/OFF switch	6
3.2	PCF8885	6
3.2.1	Sensitivity and approach speed	6
3.2.2	Color selection buttons	6
3.2.3	Switch wheel	7
3.2.4	Slider	7
3.3	PCA8886 proximity sensor	7
3.3.1	Sensitivity and approach speed	7
4	Add-on boards	9
4.1	OM11057A	9
4.1.1	Operation with OM11057A	11
4.1.2	Operation via external I ² C master	11
4.2	OM11057B	11
4.2.1	Operation with OM11057B	13
4.2.2	Operation via external I ² C master	13
5	References	14
6	Legal information	15
6.1	Definitions	15
6.2	Disclaimers	15
6.3	Licenses	15
6.4	Trademarks	15
7	Figures	16
8	Contents	17

Please be aware that important notices concerning this document and the product(s) described herein, have been included in section 'Legal information'.

© NXP B.V. 2013.

All rights reserved.

For more information, please visit: <http://www.nxp.com>

For sales office addresses, please send an email to: salesaddresses@nxp.com

Date of release: 10 April 2013

Document identifier: UM10505